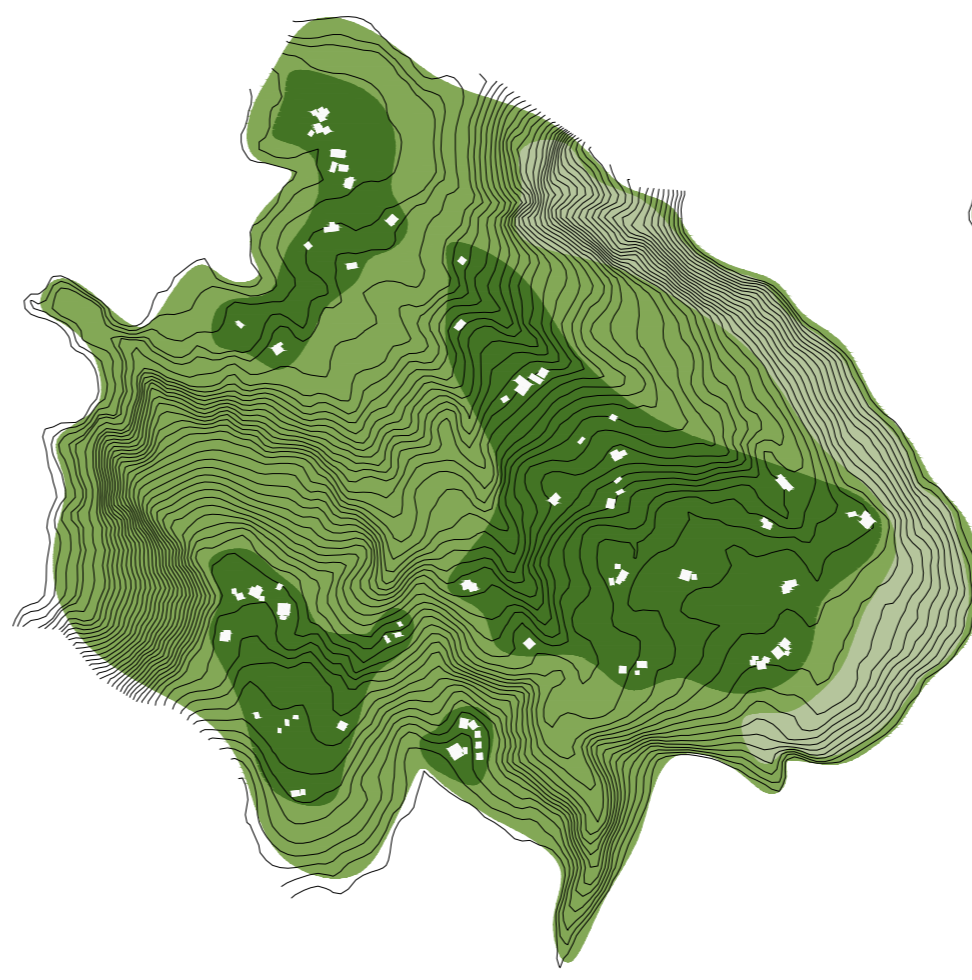


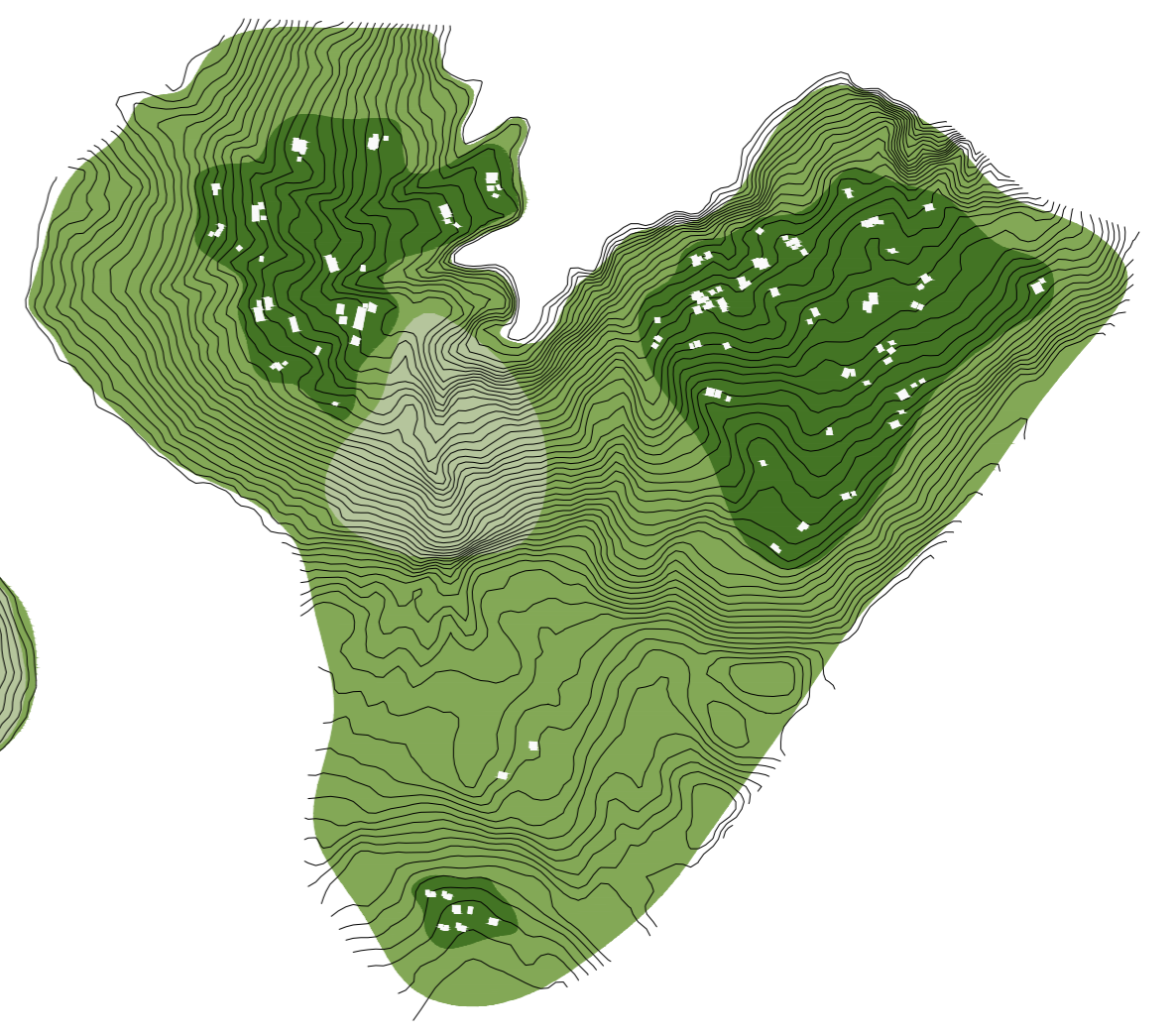
Ilet dispersé



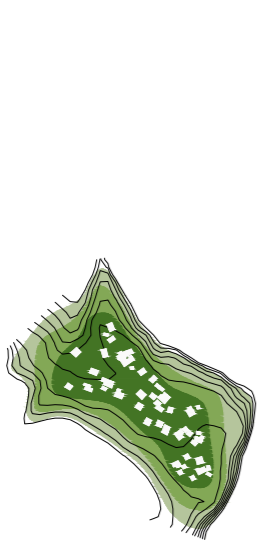
Ilet des Orangers



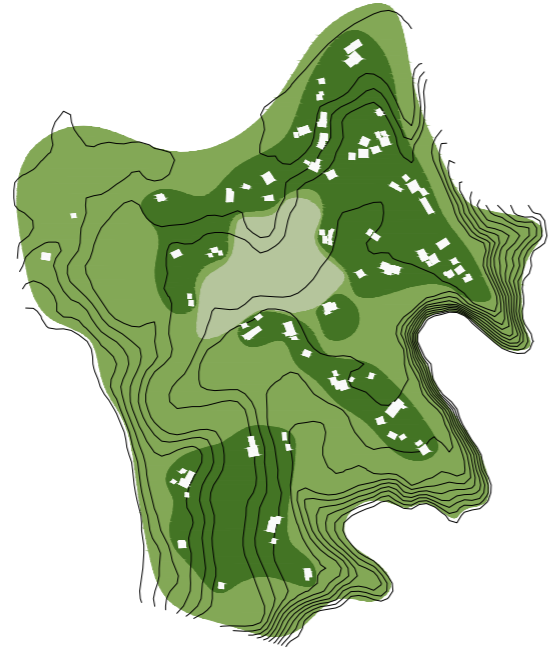
Ilet à Malheur



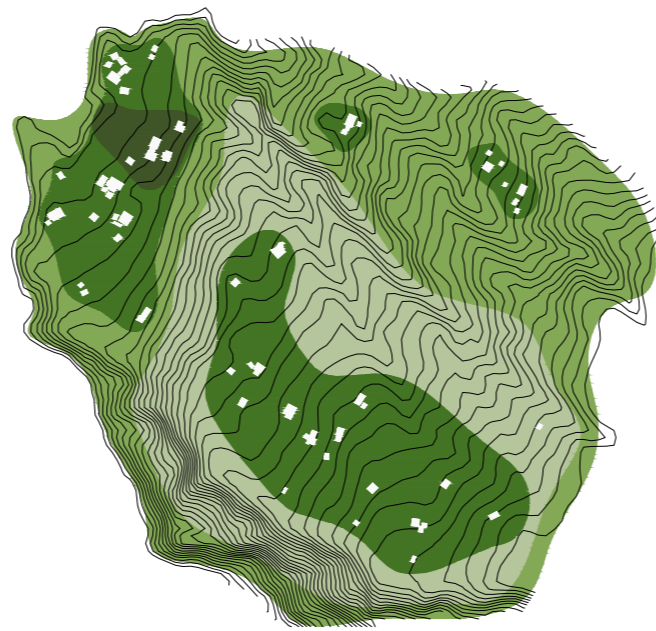
Grand Place



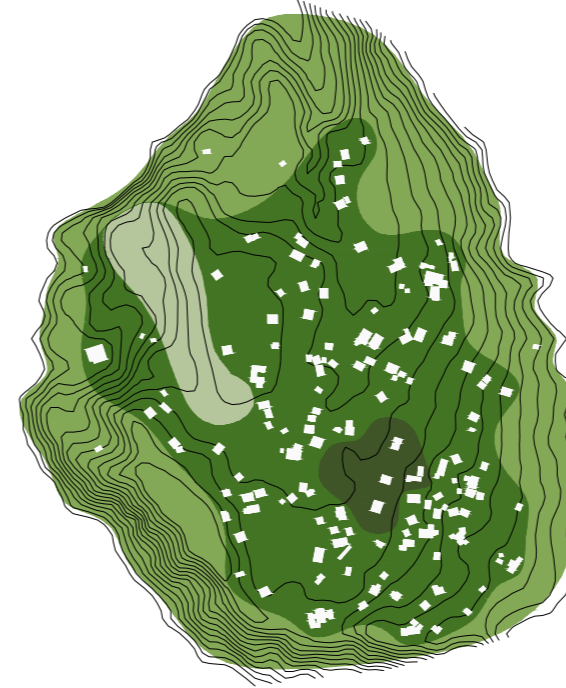
Roche Plate



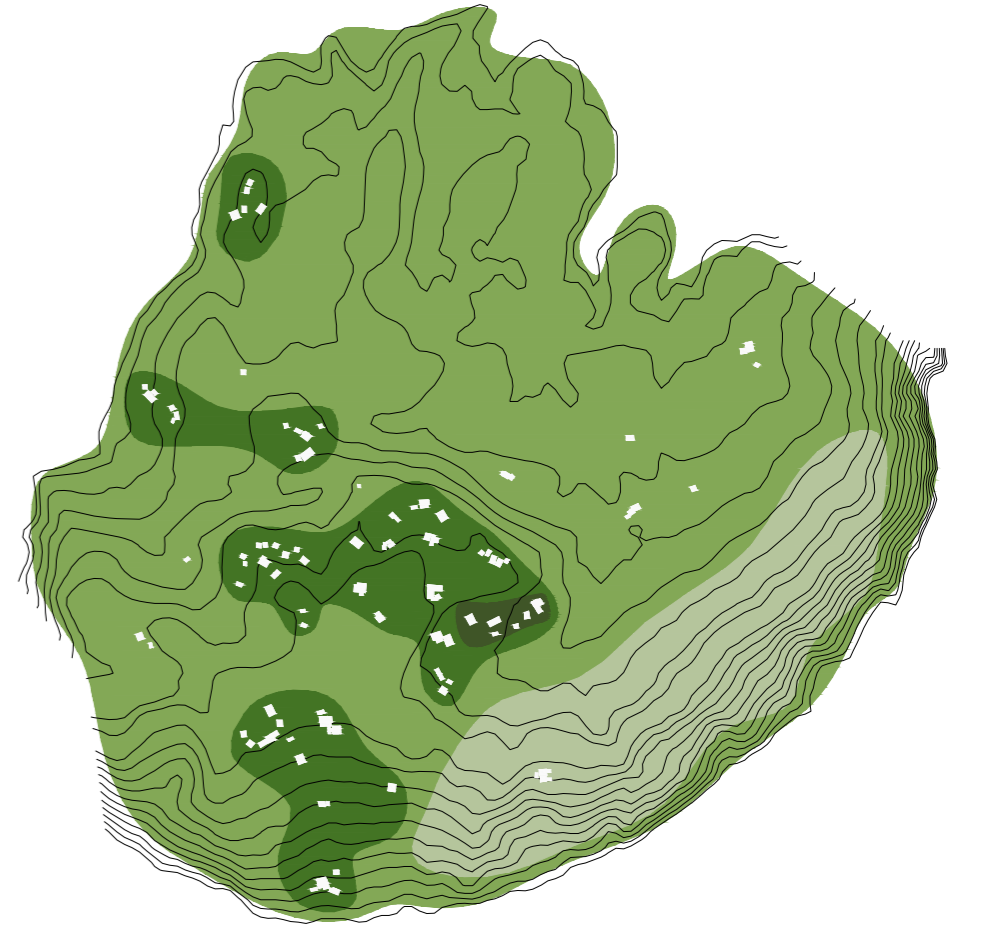
Ilet concentré



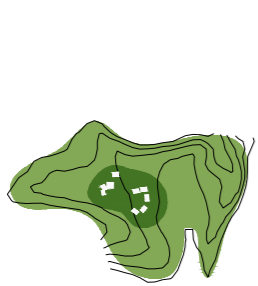
Aurère



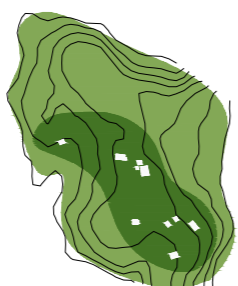
Ilet à Bourse



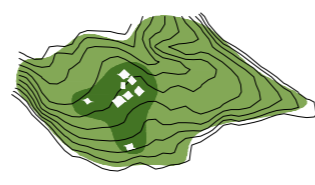
La Nouvelle



Marla



Ilet Cerneau



Ilet Cimendal



Plaine aux sables

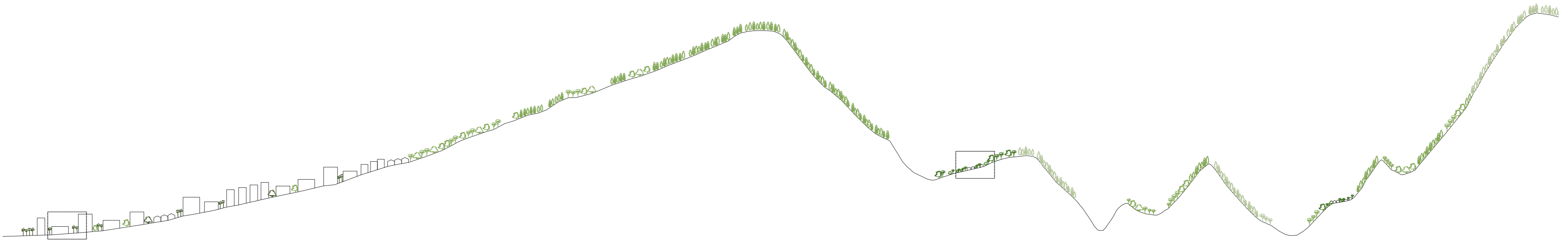
Ilet secondaire



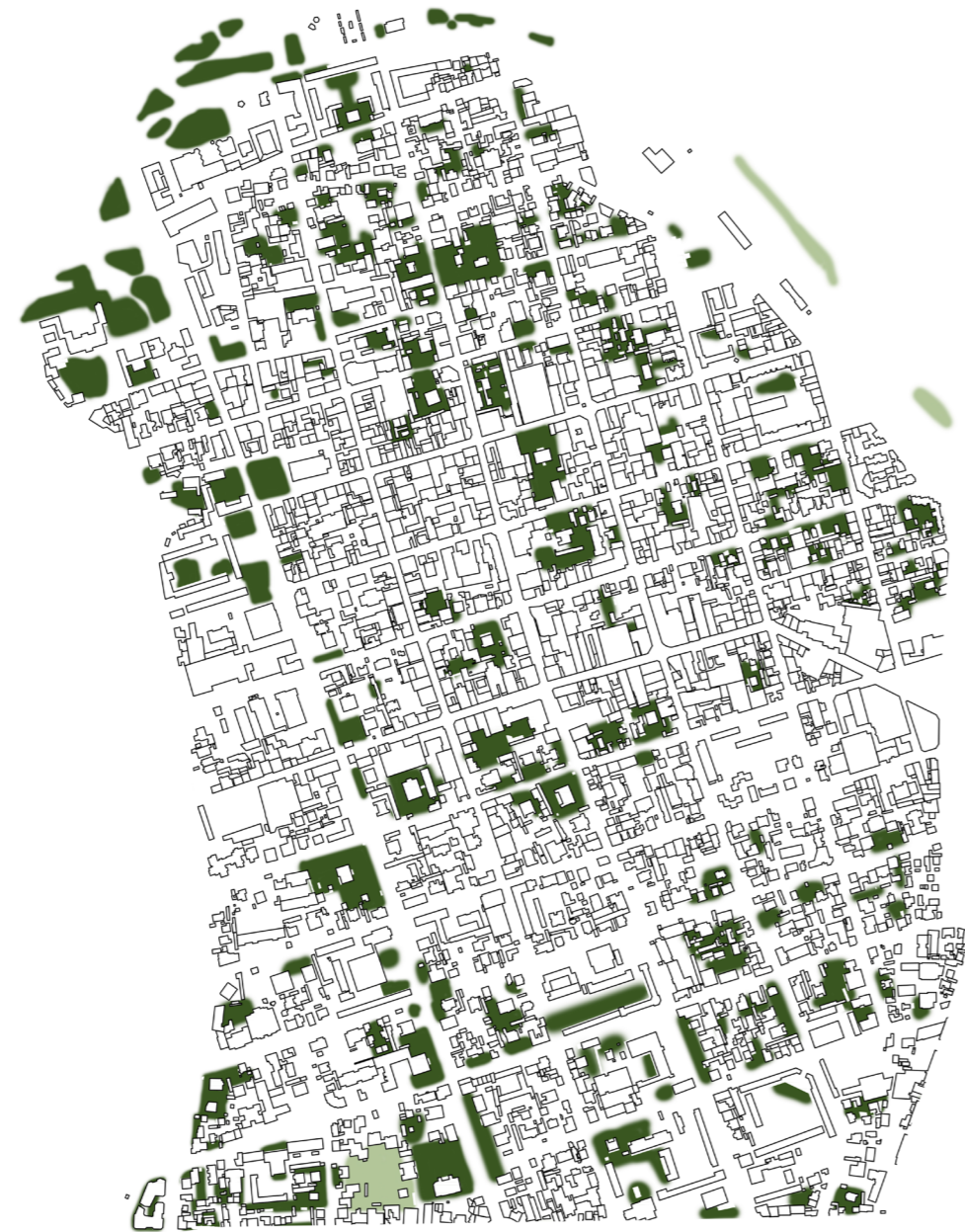
Cayenne

300 m

Cirque de Mafate



Quartier Bas de la rivière



Quartier ancien / Colonial



Quartier Vauban et Rue du M. Leclerc



Quartier de la source

Centre-ville de Saint-Denis

- Régulation de l'environnement
- Soutien à la biodiversité
- Nourricier
- Ornemental



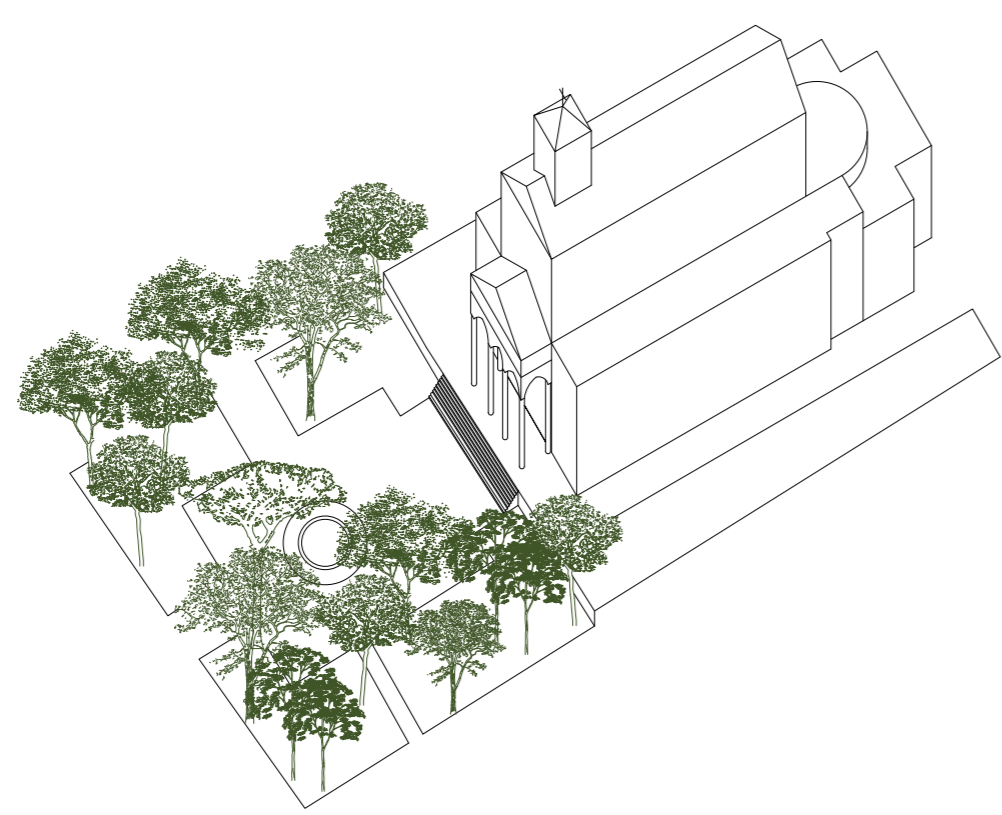
25 m



Rue de Paris / Saint-Denis

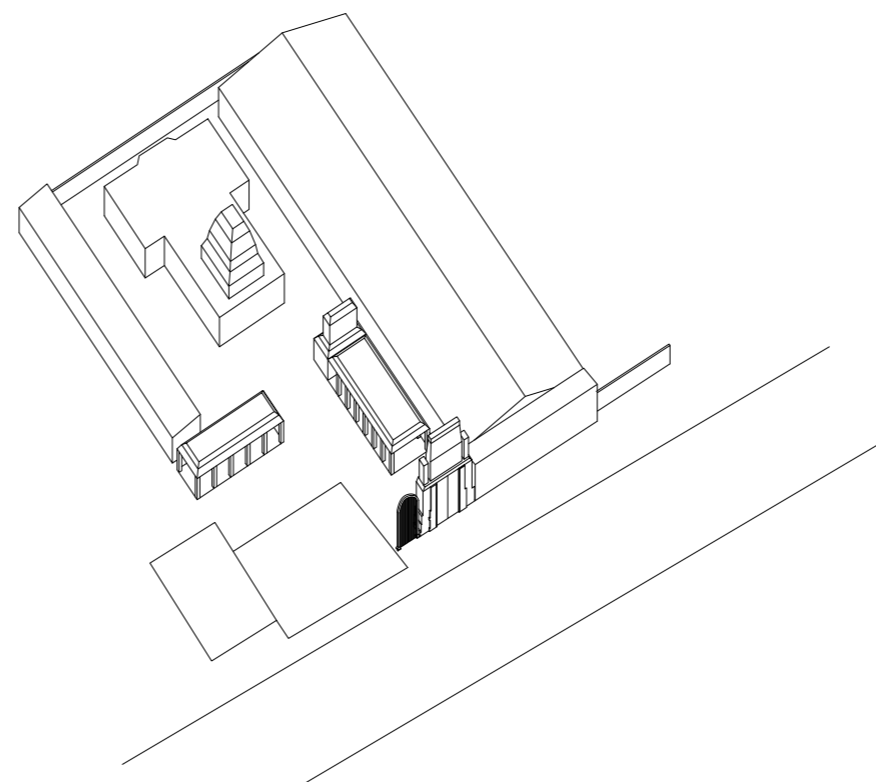
Ilet des orangers / Mafate

5 m

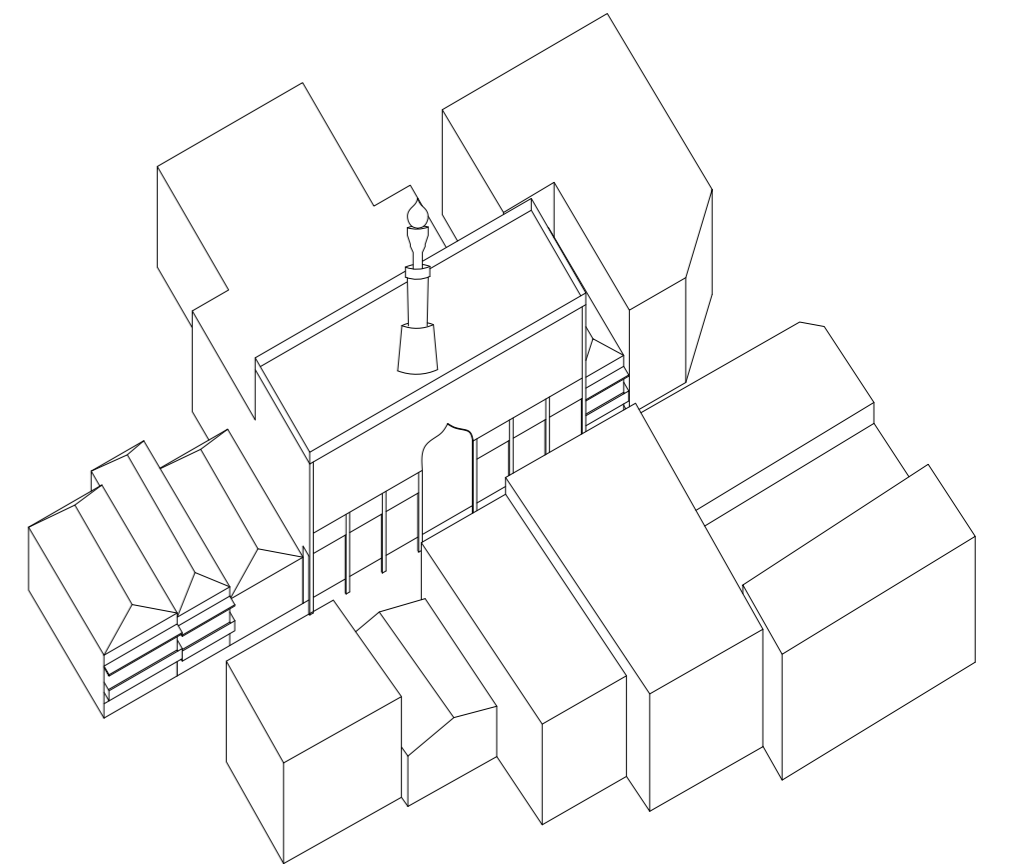


Lieux de cultes

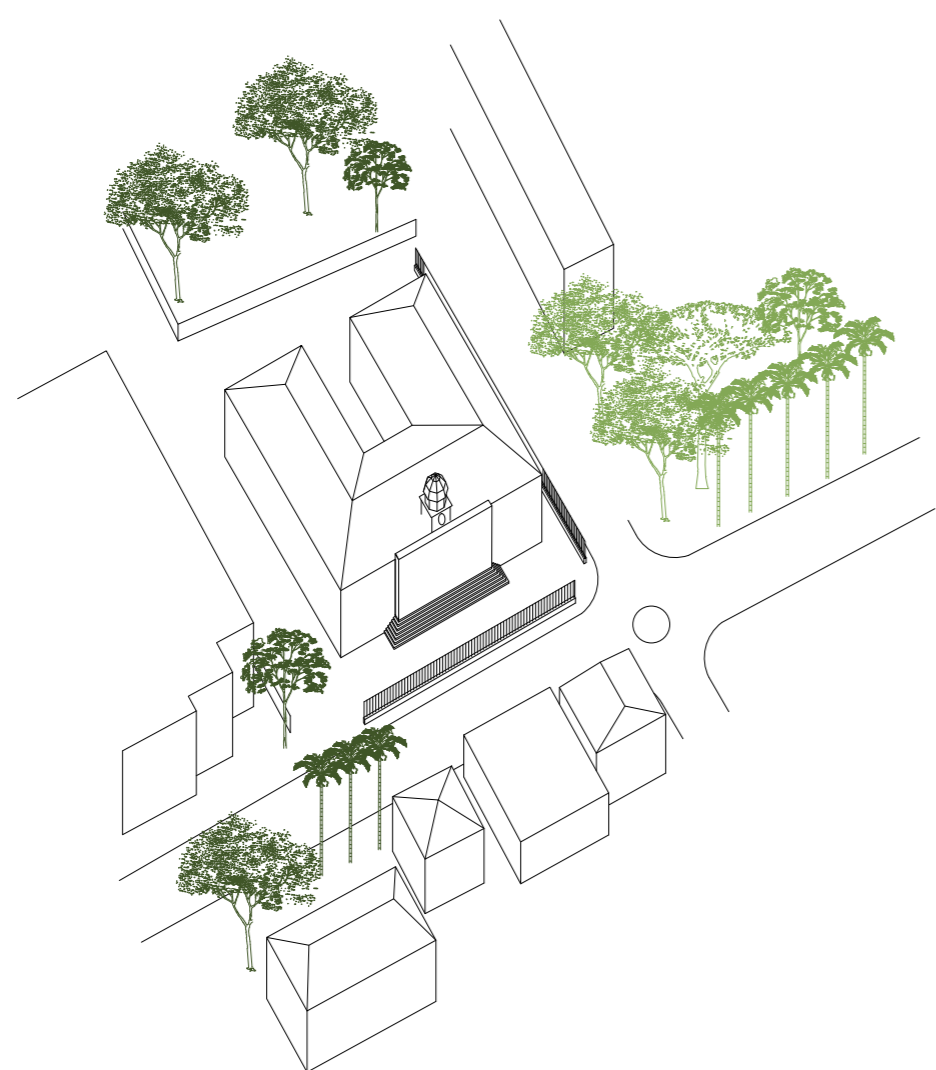
Cathédrale de Saint-Denis



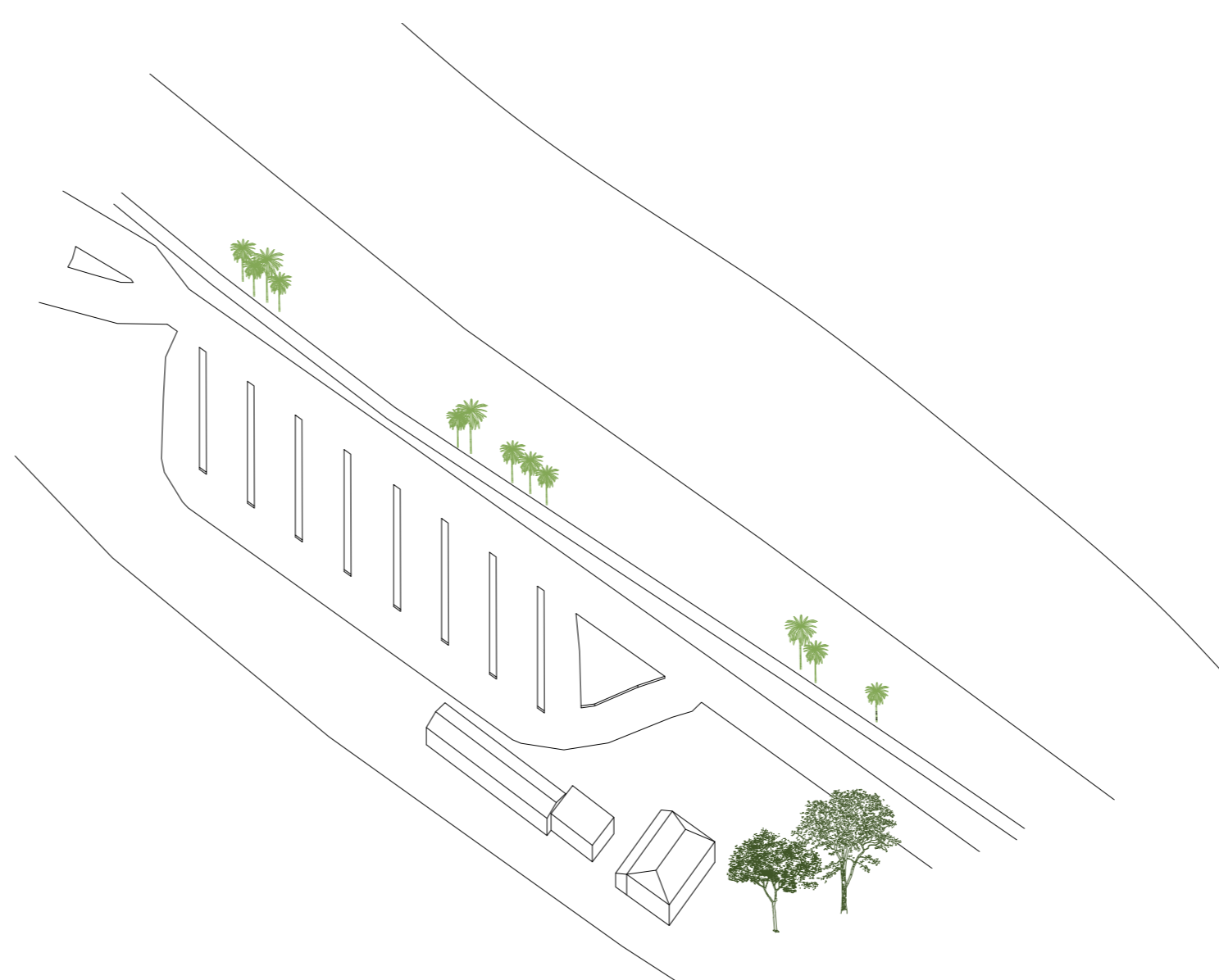
Temple Tamoul Kali Kampal



Grande mosquée Noor-E-Islam

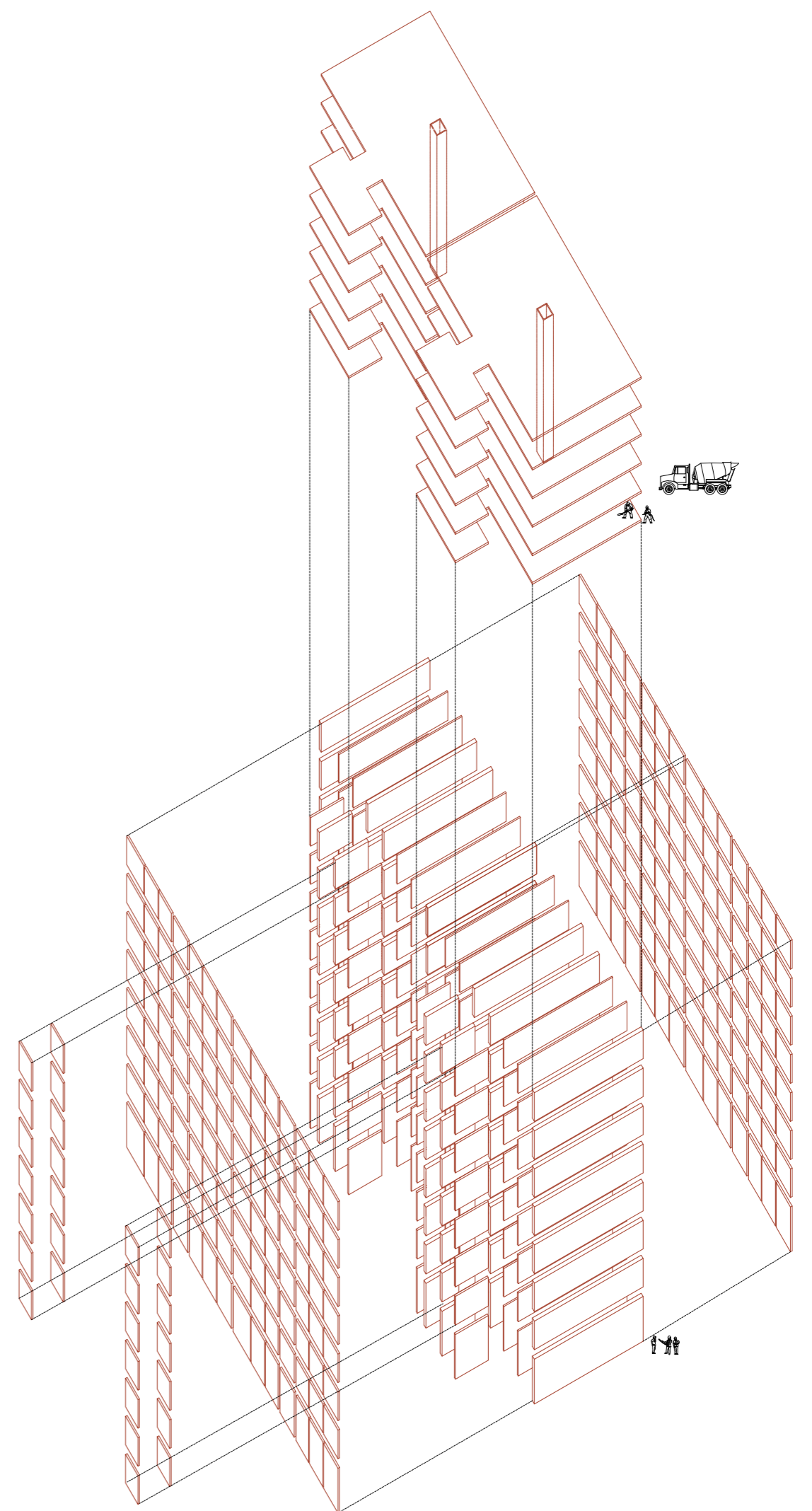
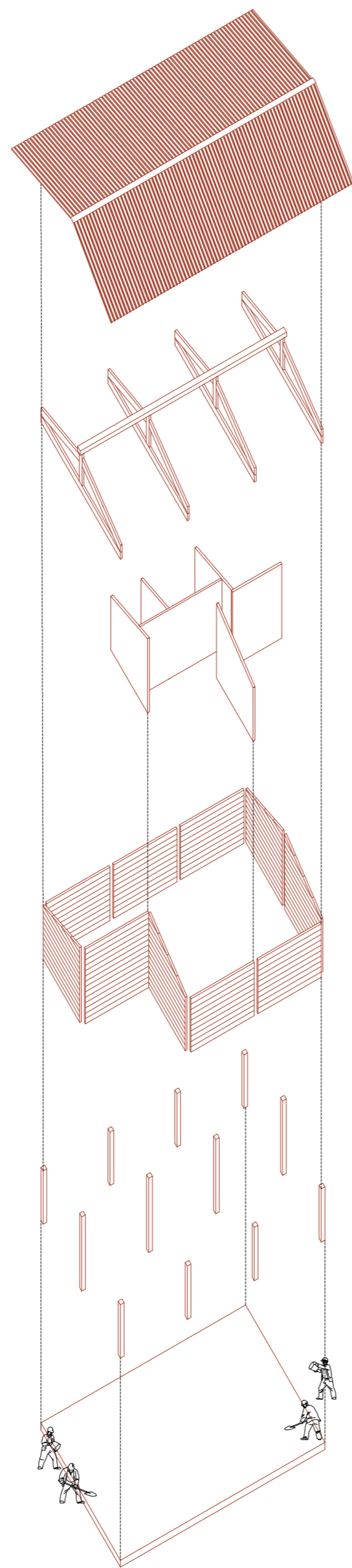
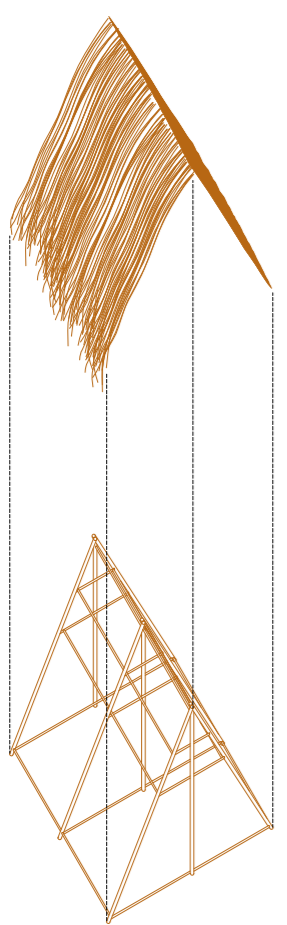
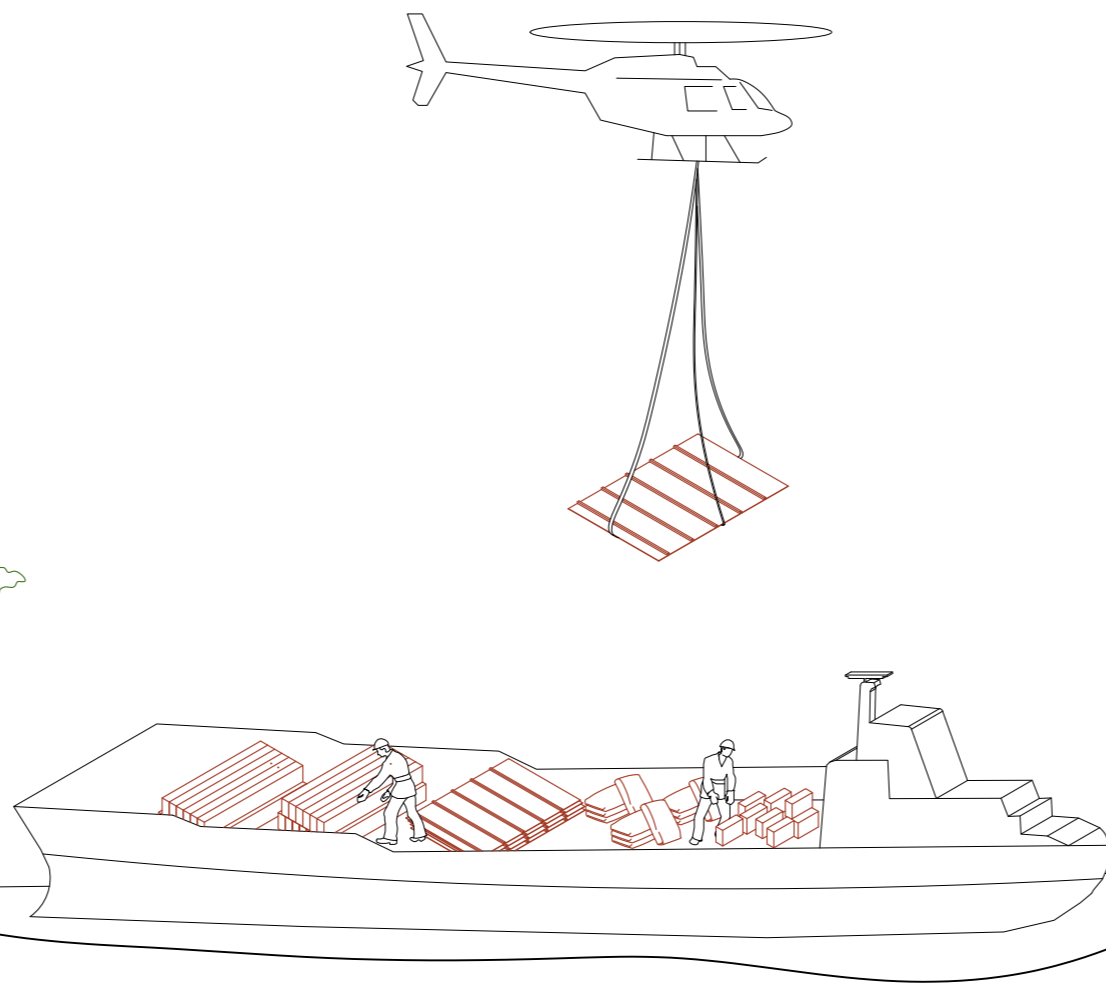
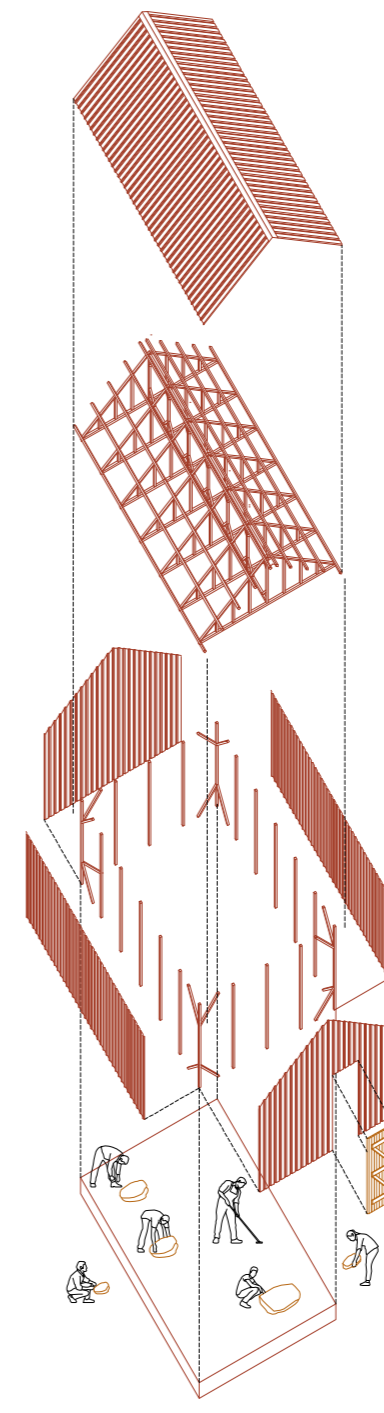
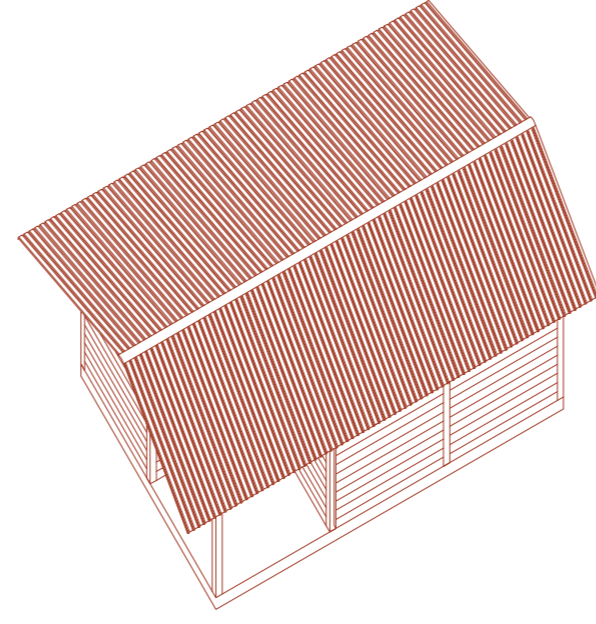
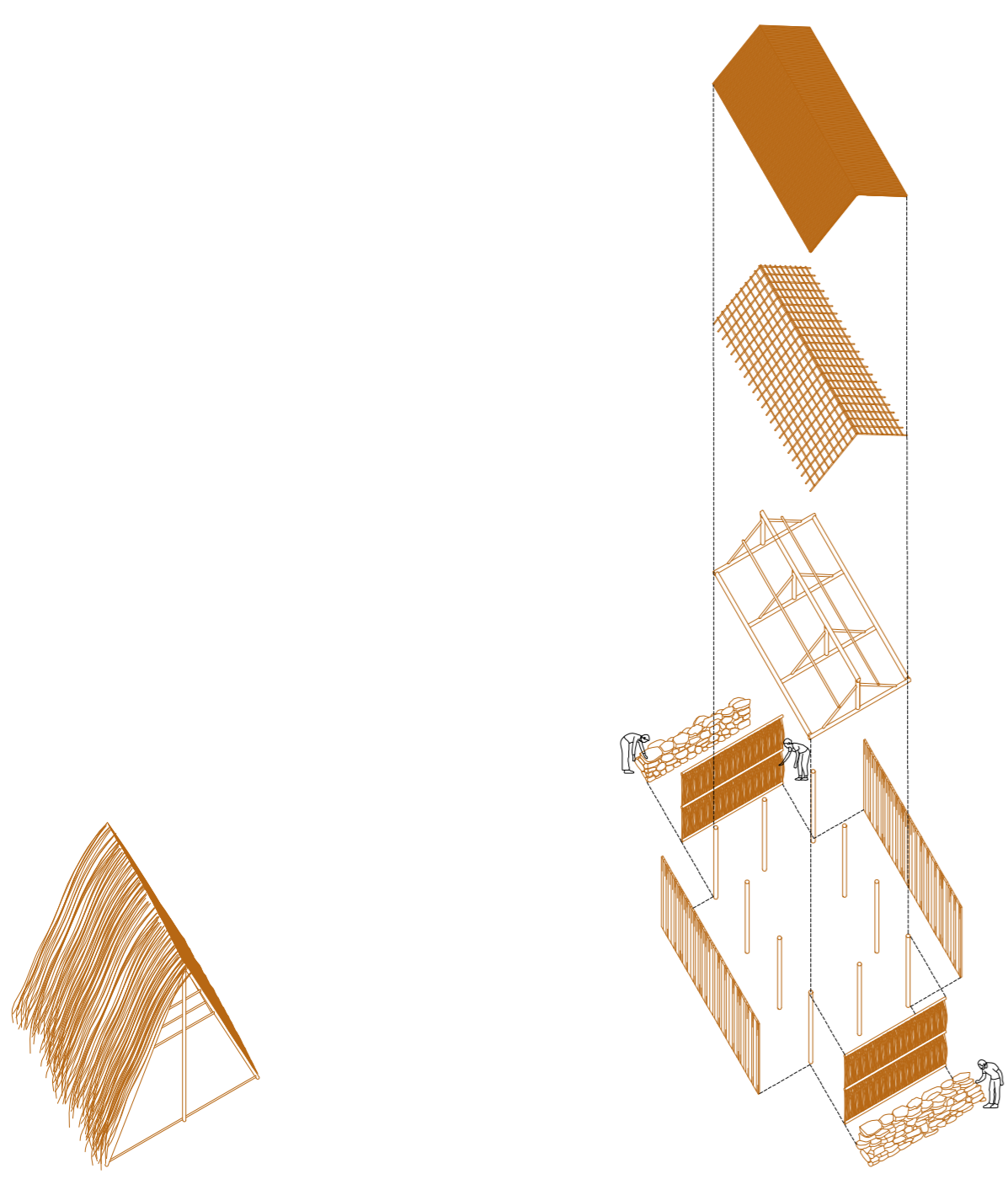


Mairie de Saint-Denis



Gare routière

25 m





Point de vue sur Saint-Denis et les Hauts
Laureline Lebens et Lucie Van Drooghenbroeck
Travail de fin d'études en et sur l'architecture : Typologies | UCLouvain - LOCI | 2022-2023







Vivre autour d'un jardin nourricier



Vivre entre un parc récréatif et une place



Vivre dans un jardin intime

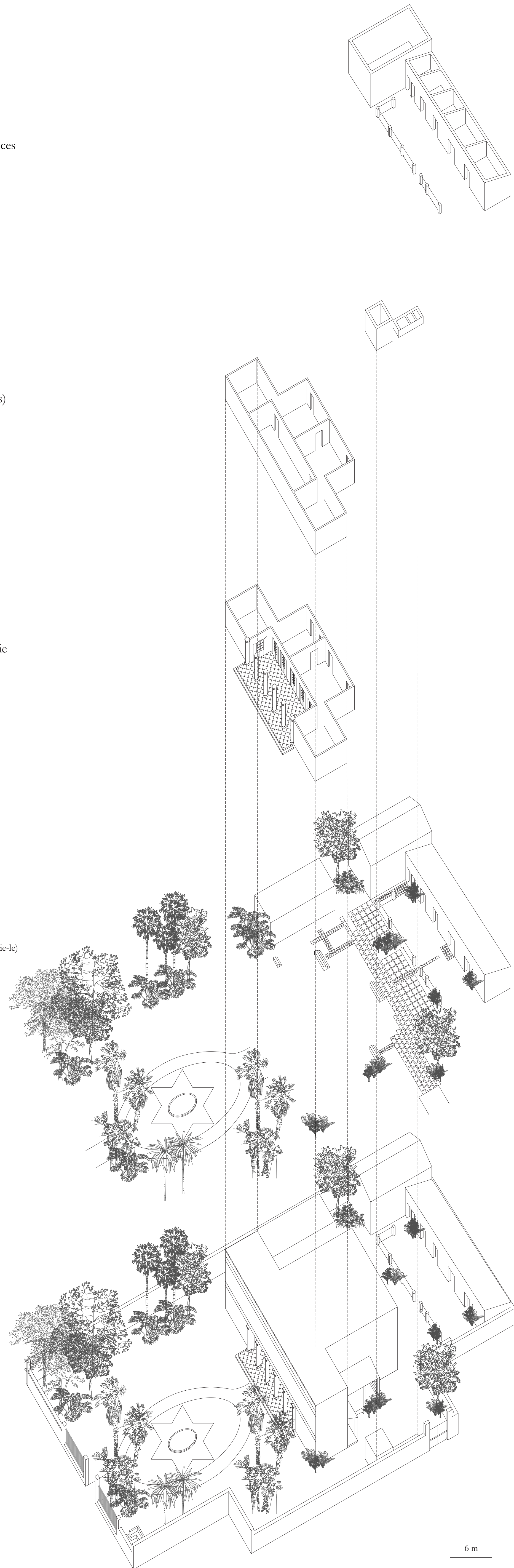
Ouverture vers l'océan

Dépendances
Salle d'eau
Sanitaires
Boucan
Cuisine

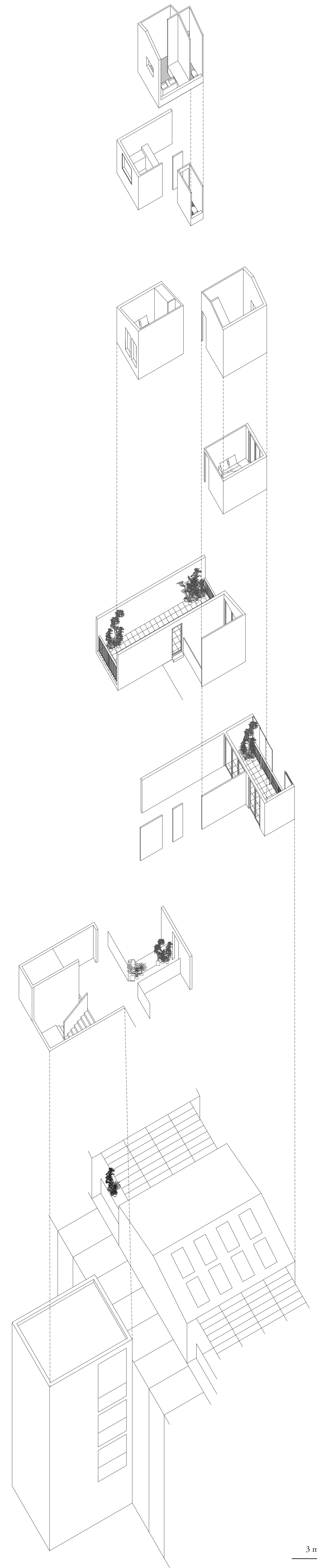
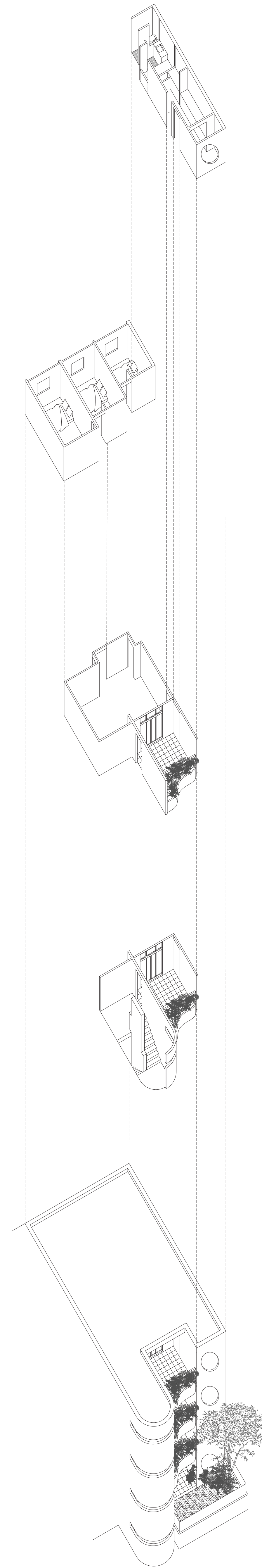
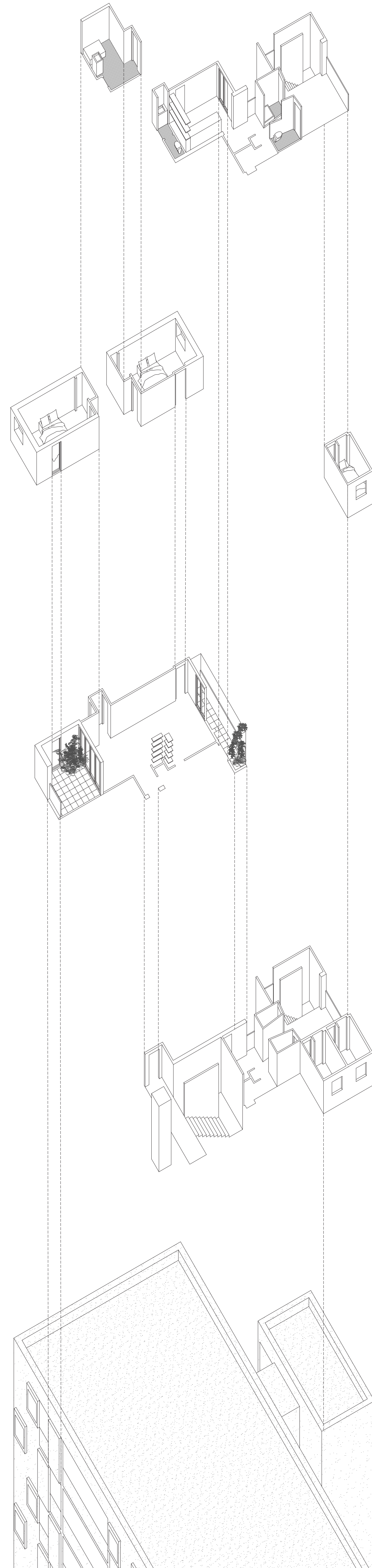
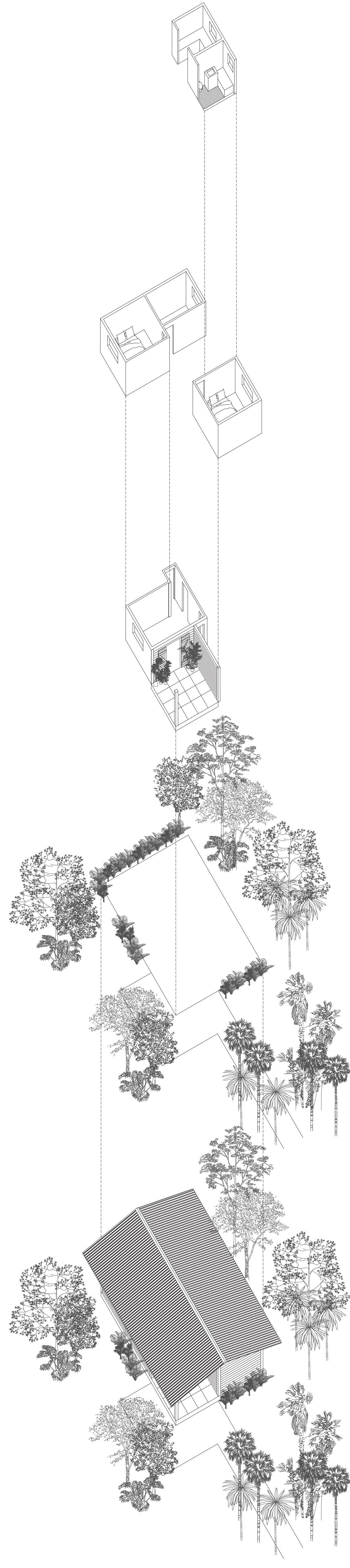
Chambre(s)

Pièce de vie
Salon
Varangue

Jardin
Cours
Le Baro
Le guetali
(guette à li xépie-le)



6 m



3 m



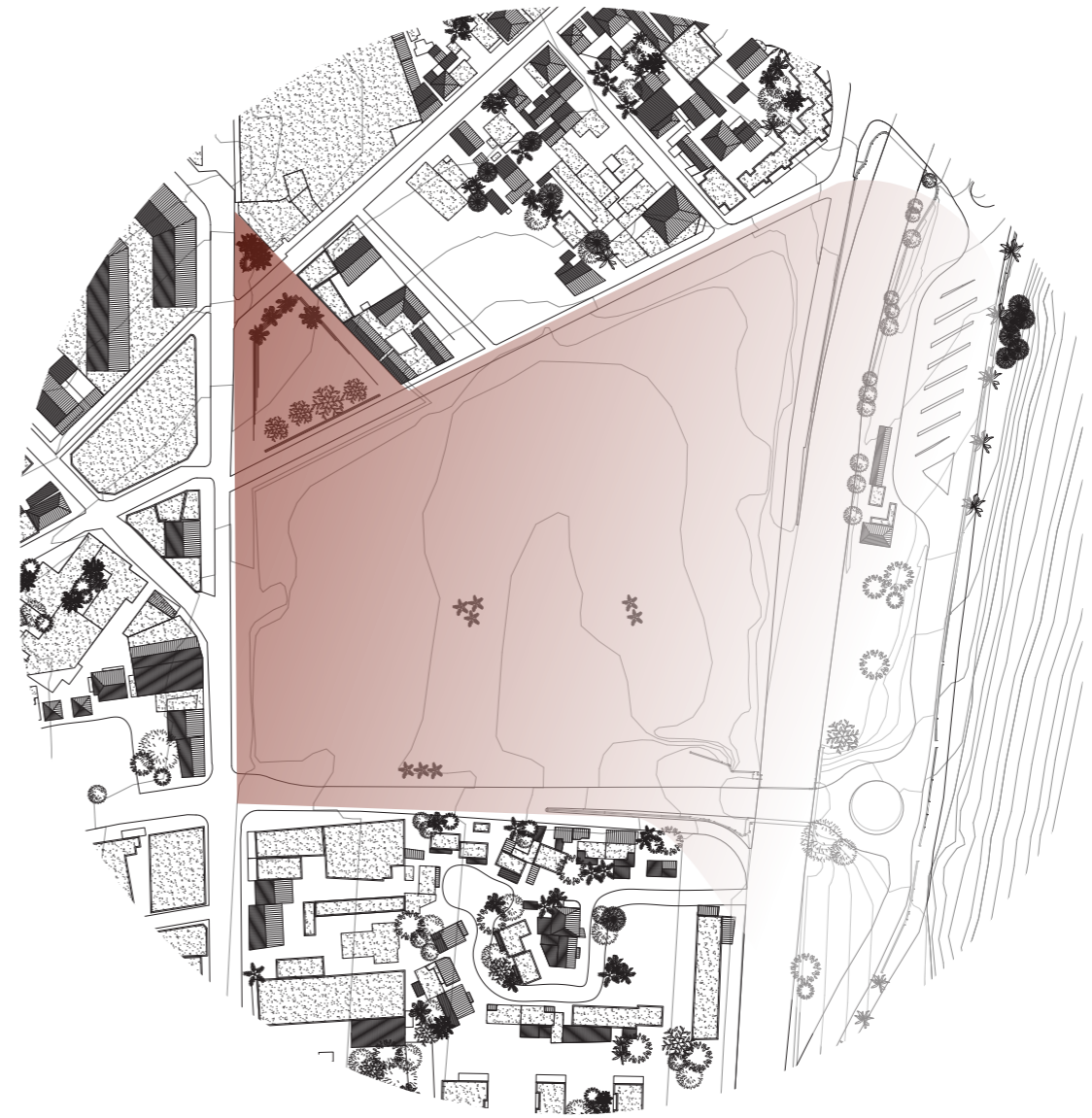
Requalification du Boulevard Lancastel et mise en place de deux lignes de tram



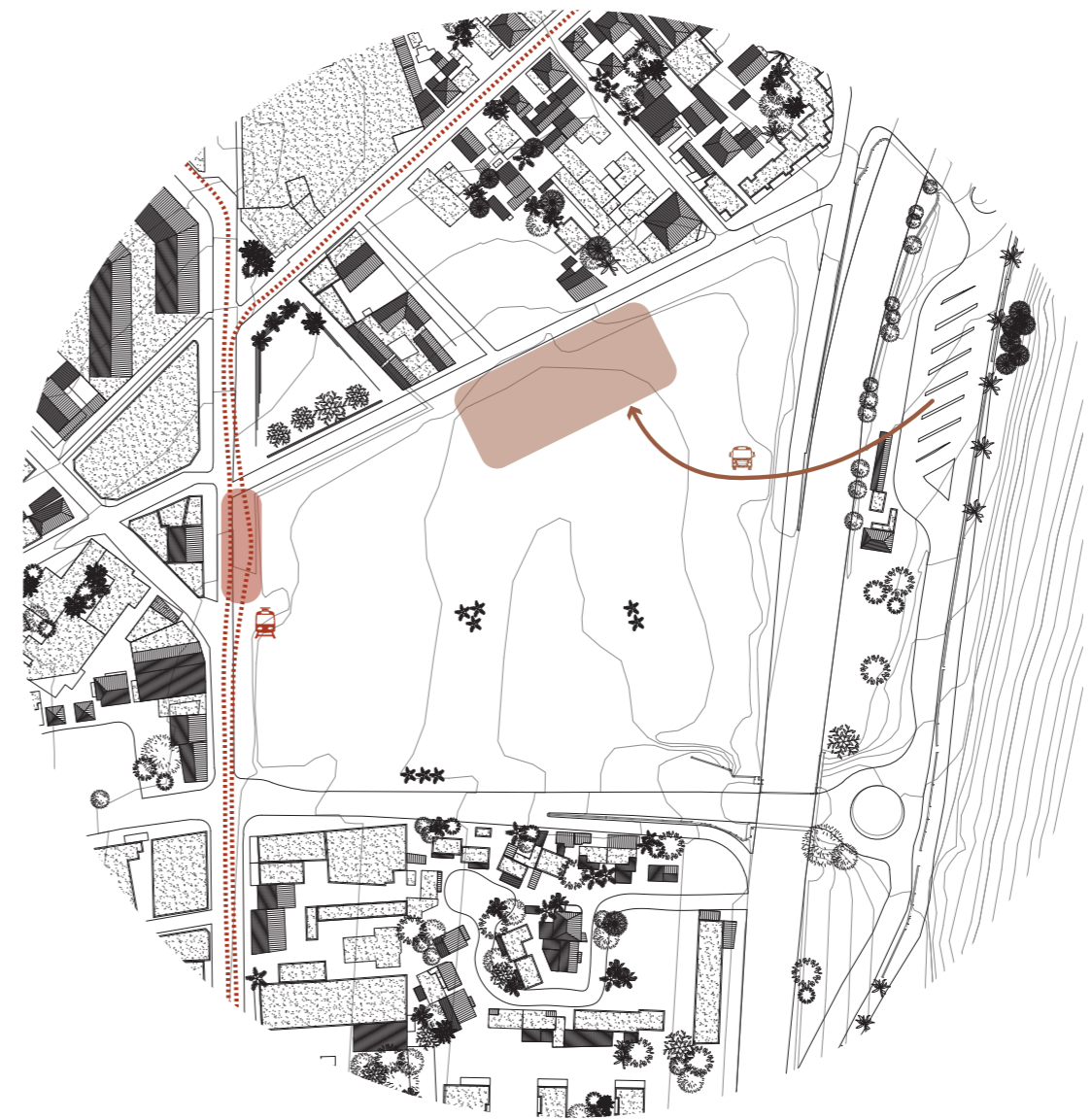
Création d'un maillage vert



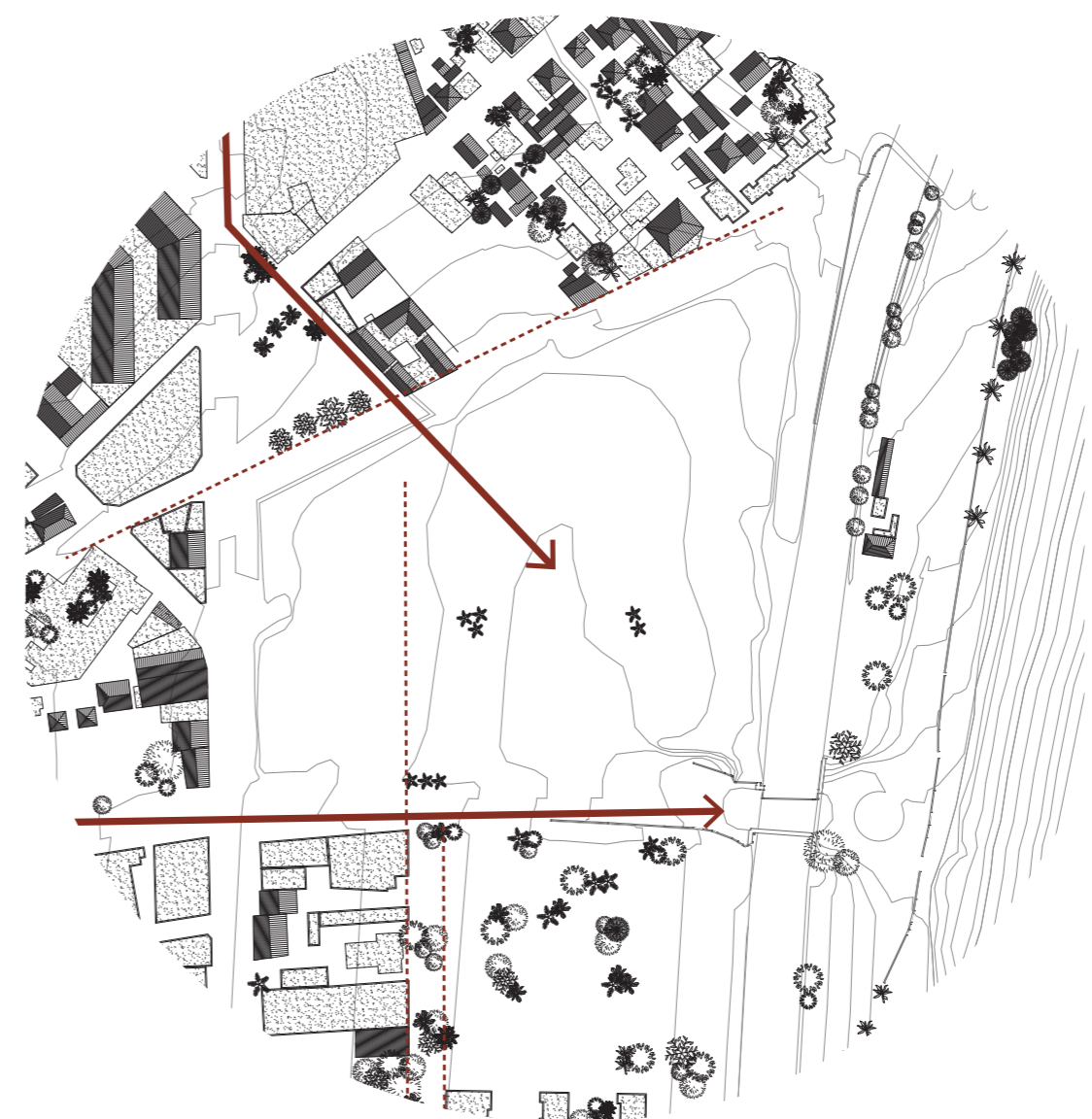
Ravines et topographie



Extension de la Place Felix Guyon existante et ouverture vers l'océan



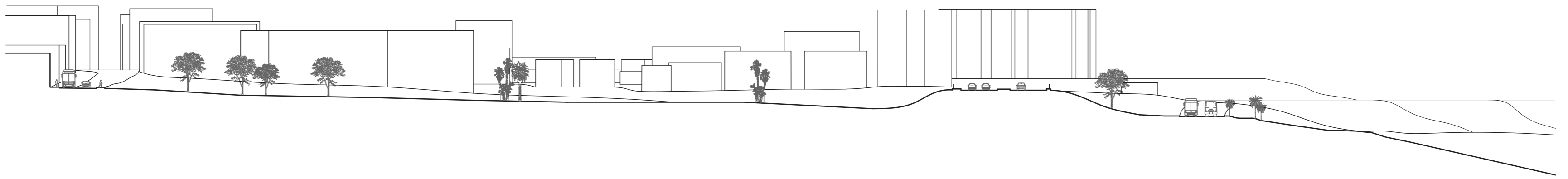
Déplacement de la gare routière et création d'un nouvel arrêt de tram



Directions et axes de composition



Programme existant
 Commerce Logement Lieu de culte



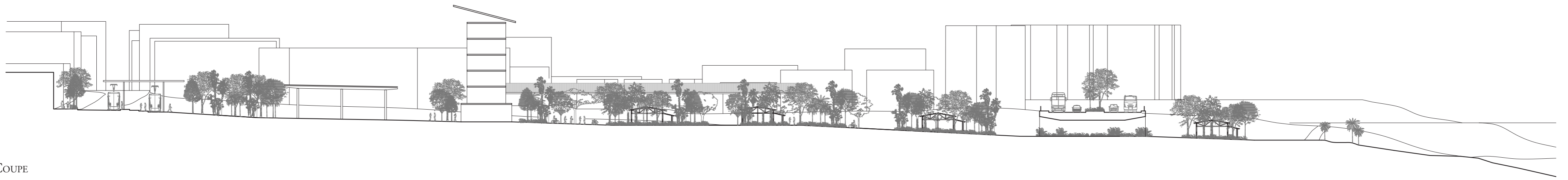
Coupe



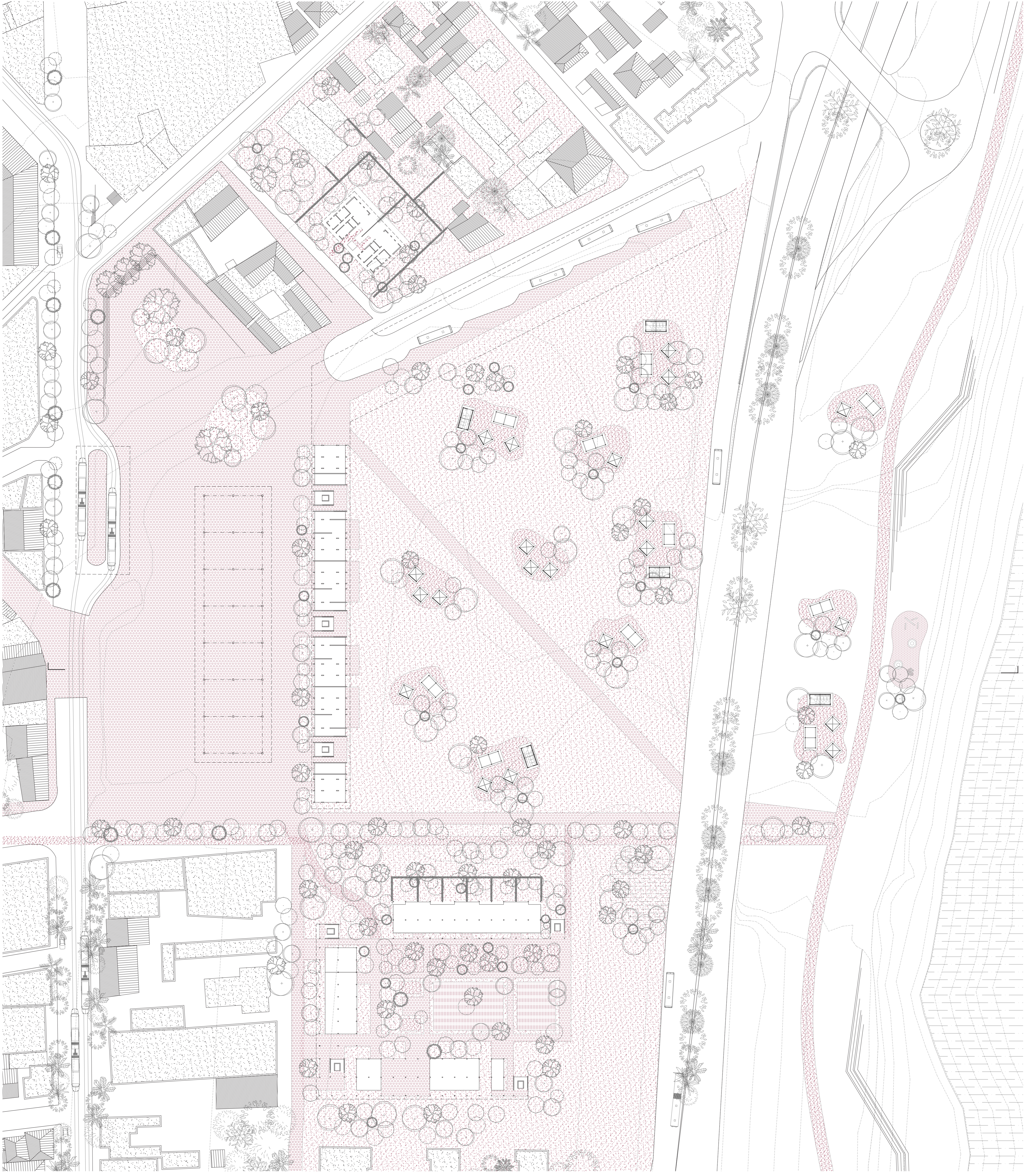
PLAN



40 m



COUPE

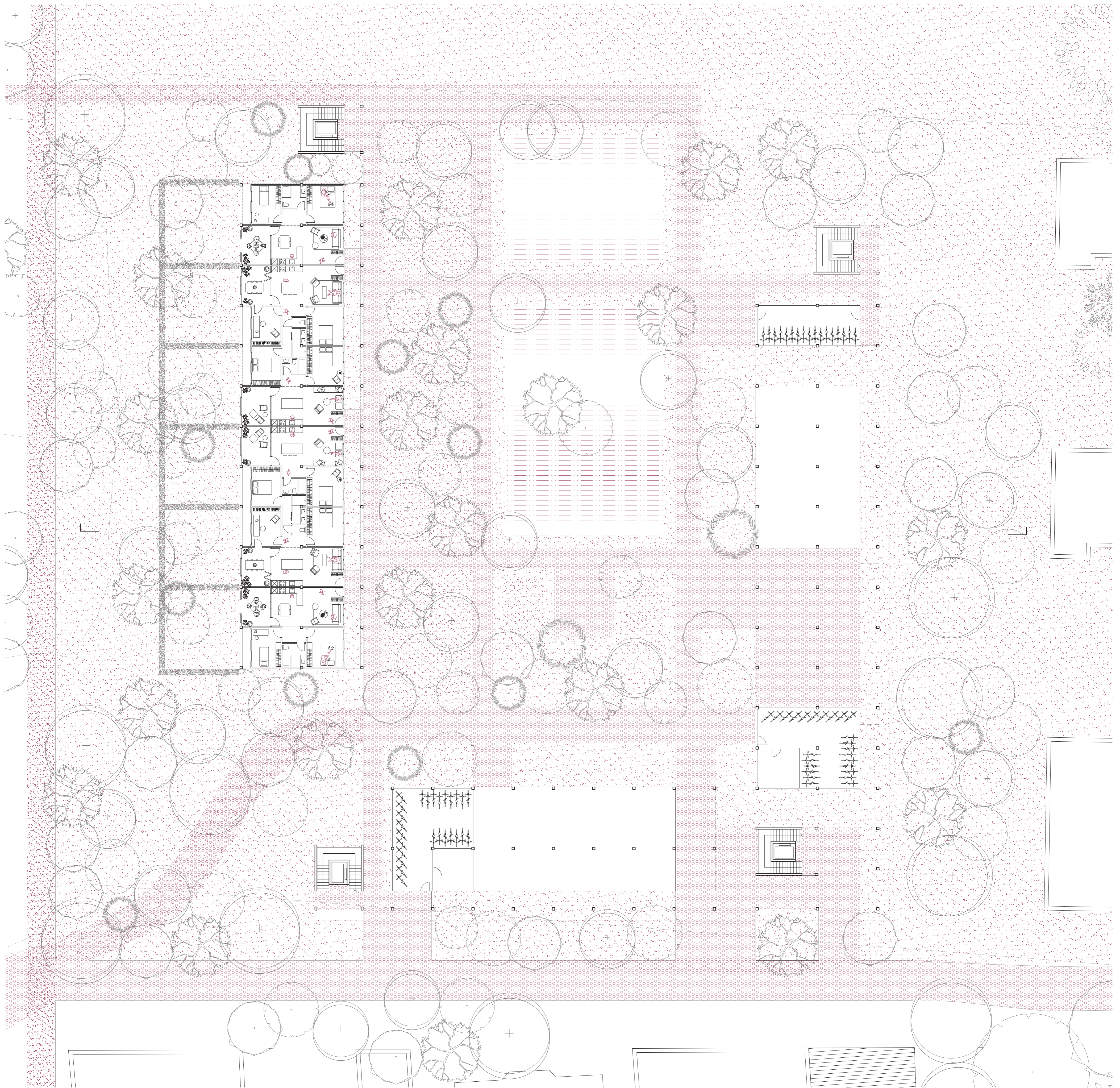


PLAN



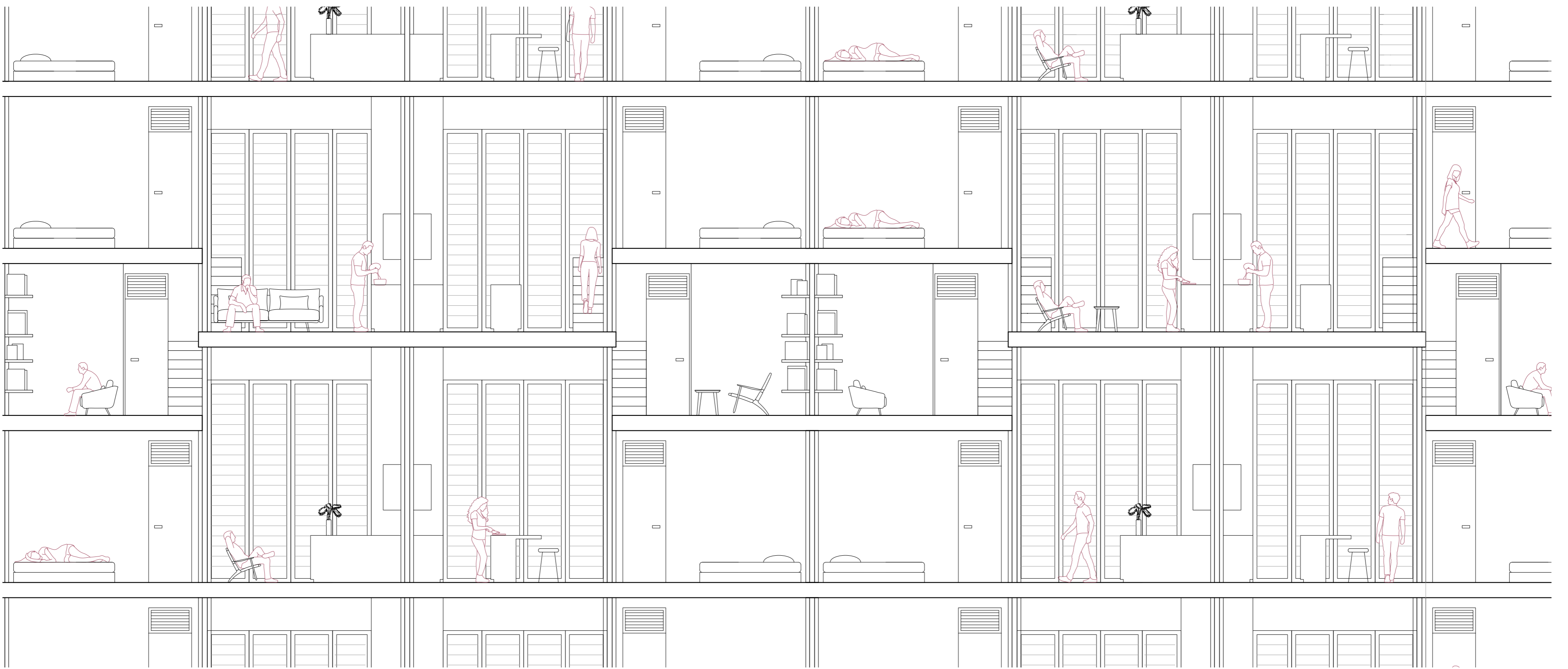


COUPE

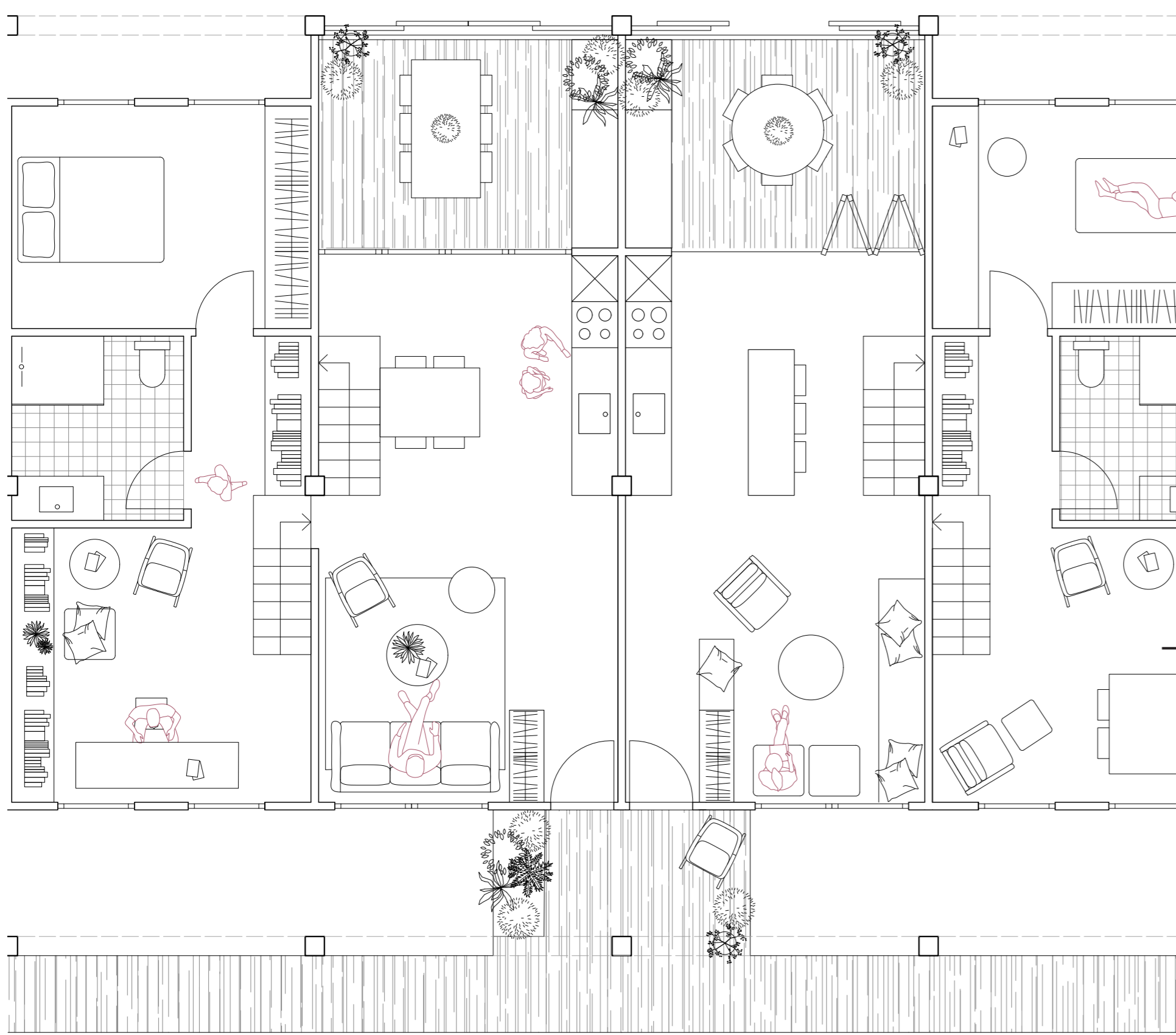


PLAN

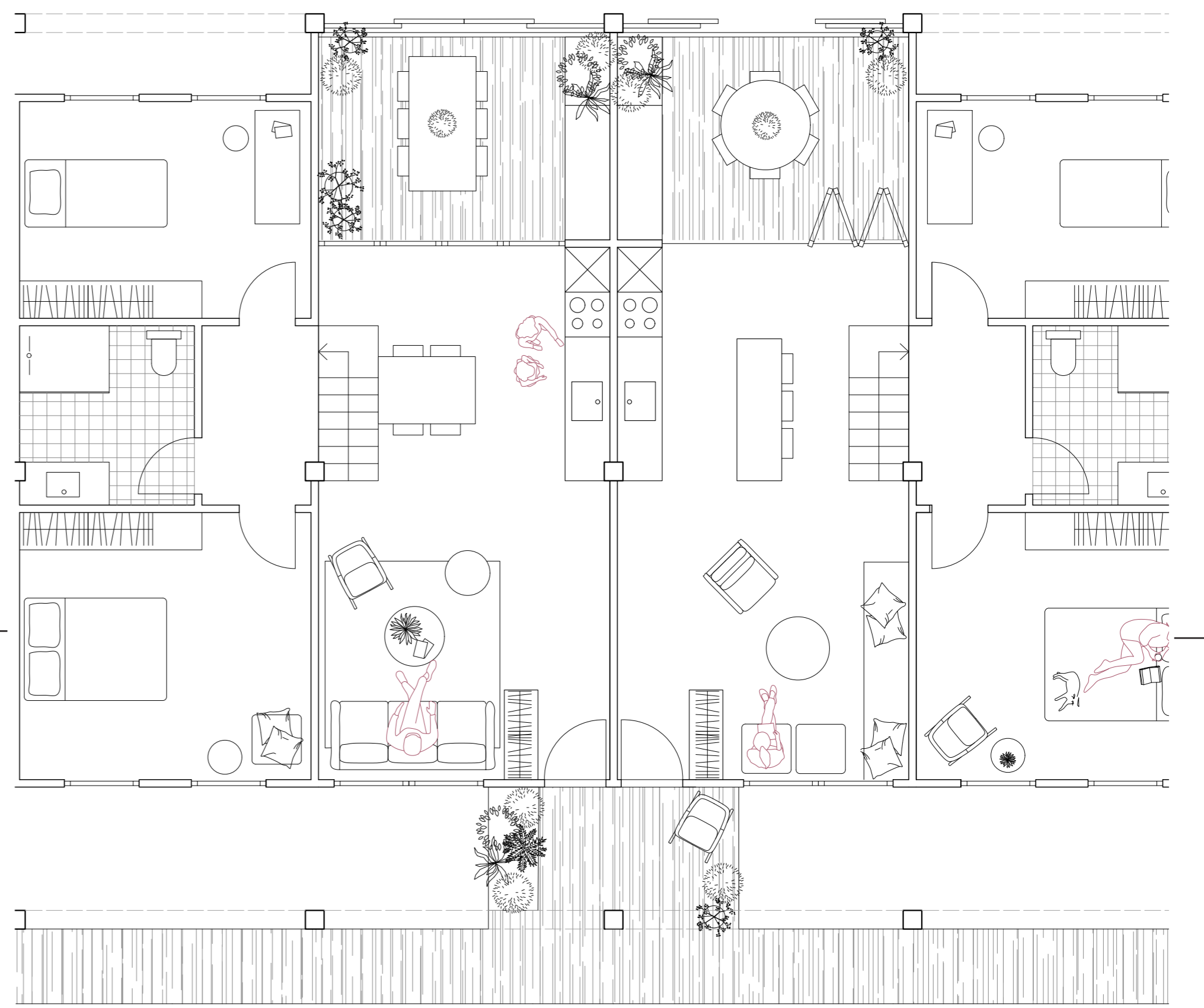




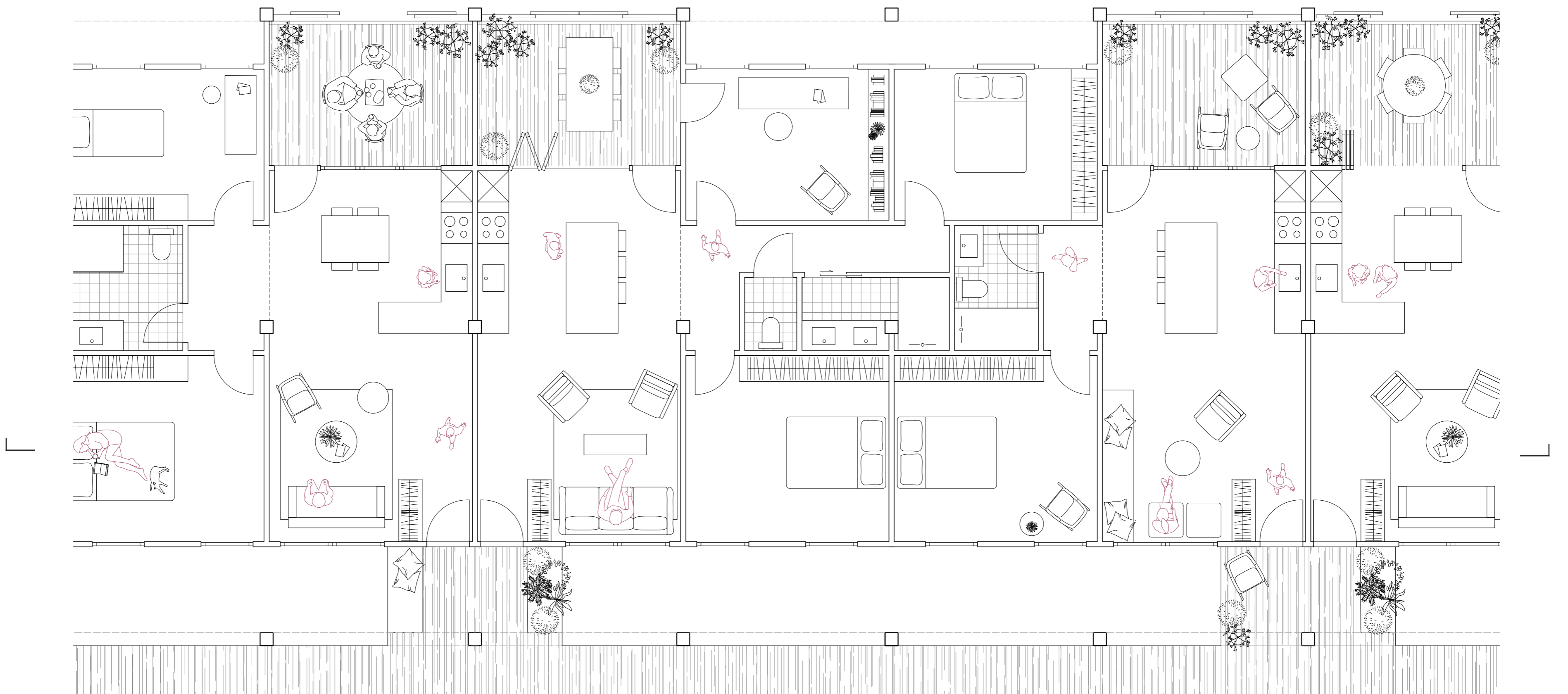
COUPE



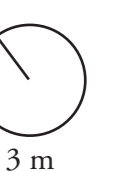
PLAN R2



PLAN R3



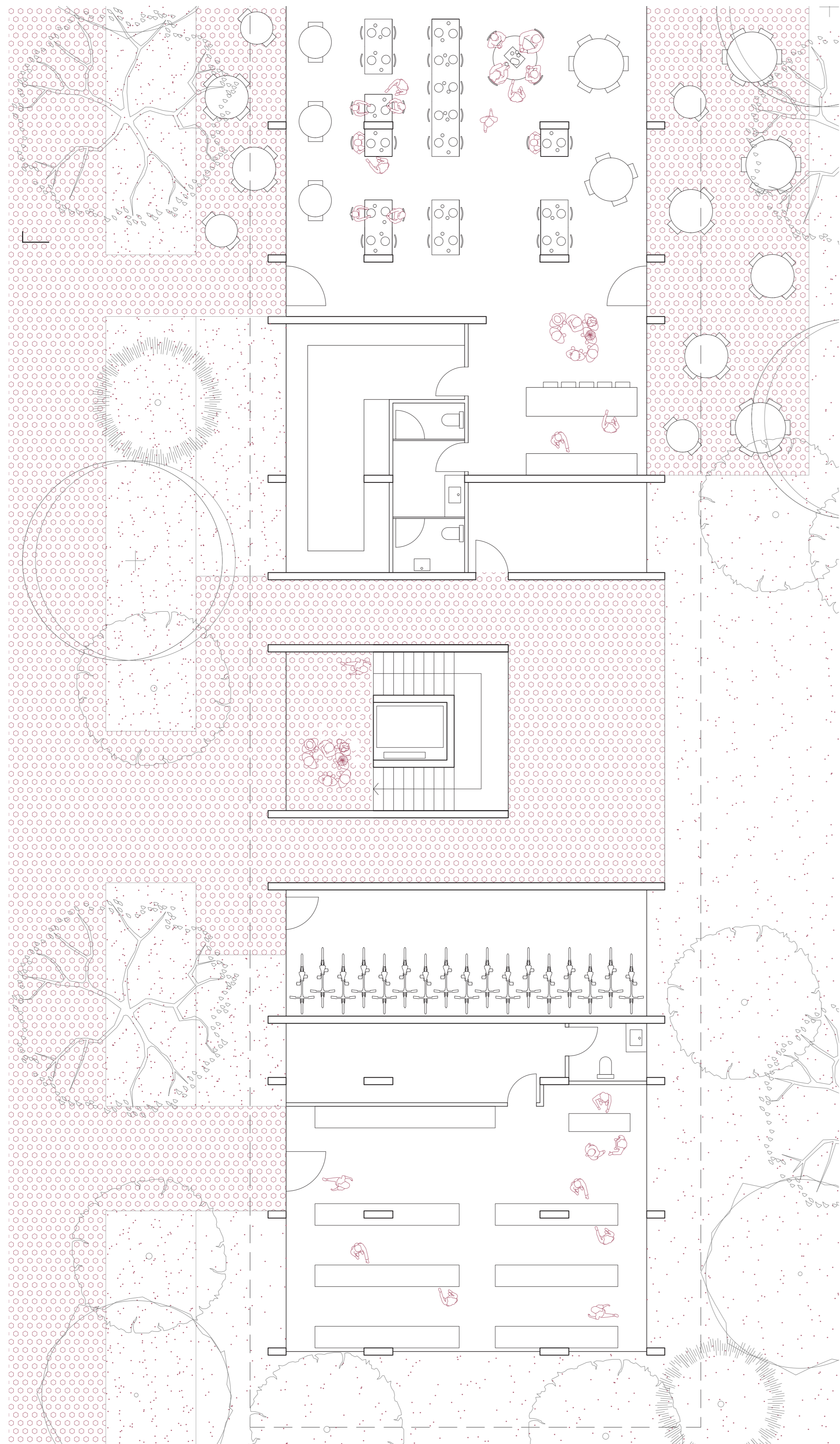
PLAN R1



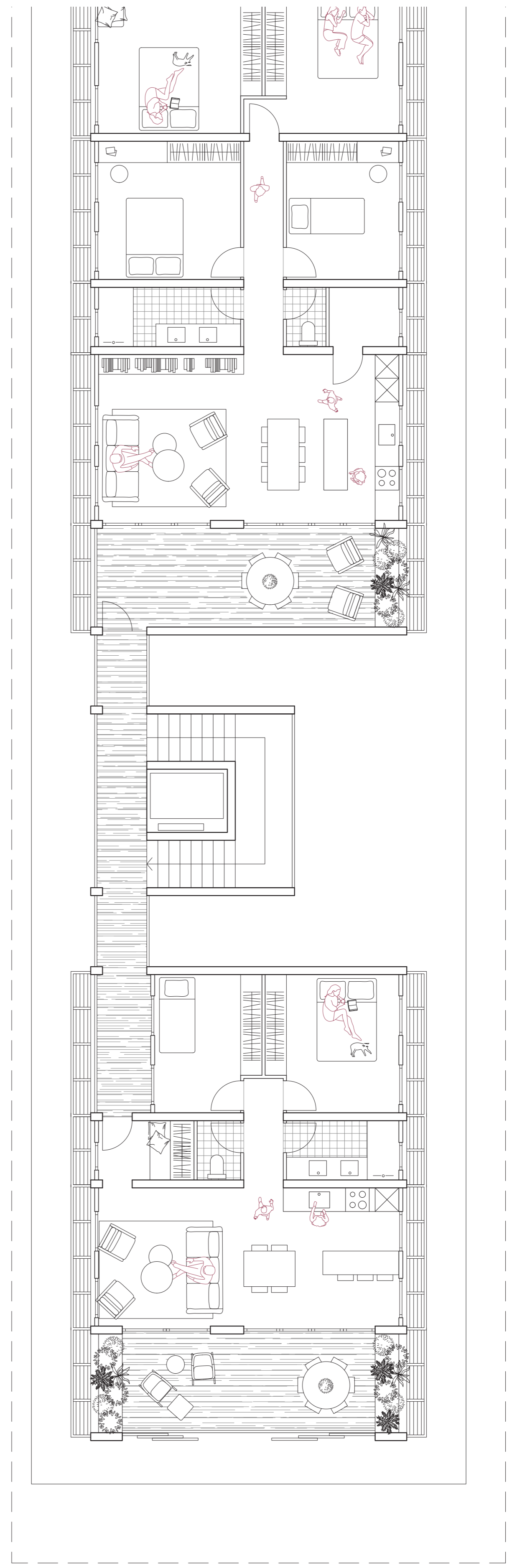
3 m



COUPE



PLAN R0



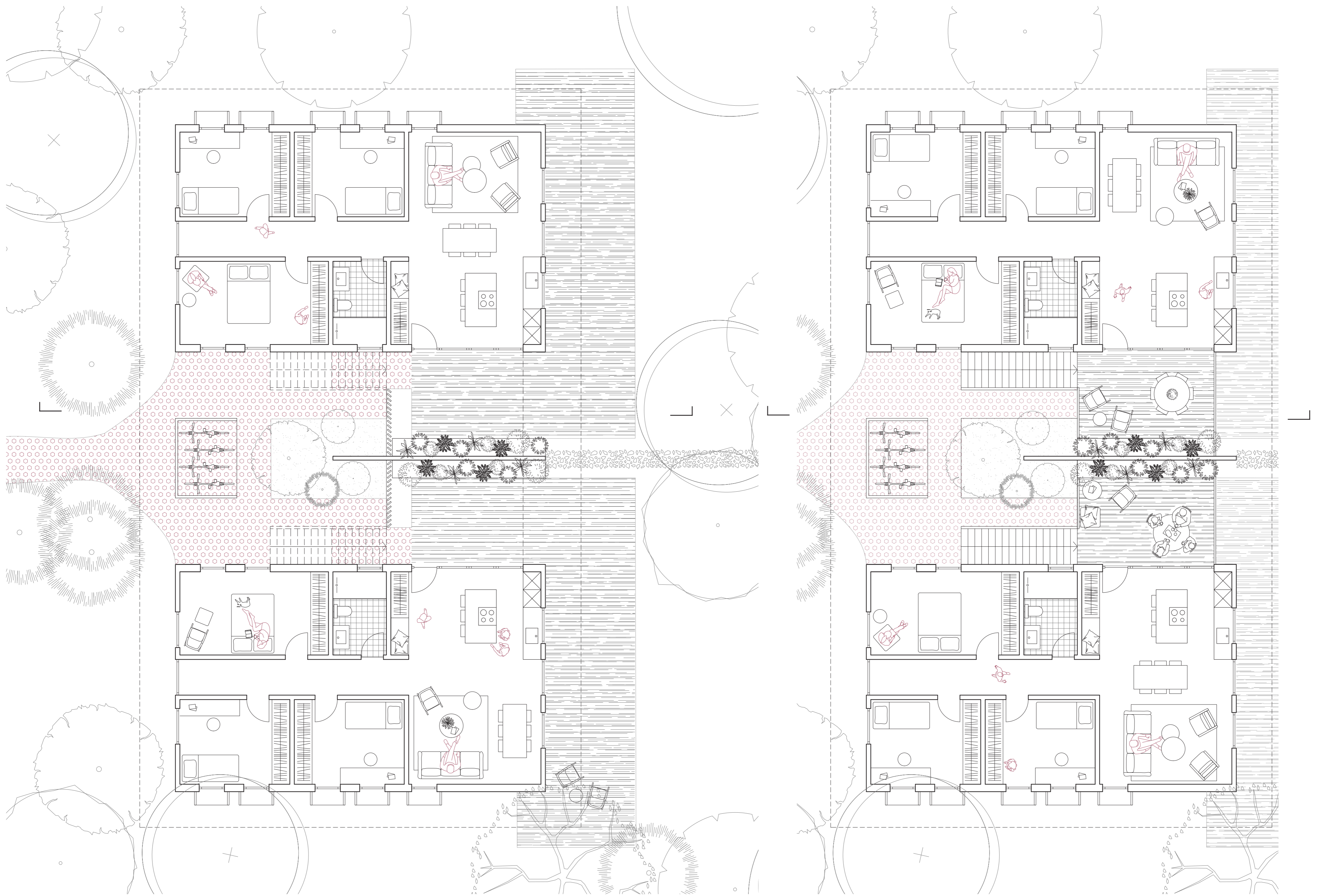
PLAN R1



4 m



COUPE



PLAN R0

PLAN R1



4 m