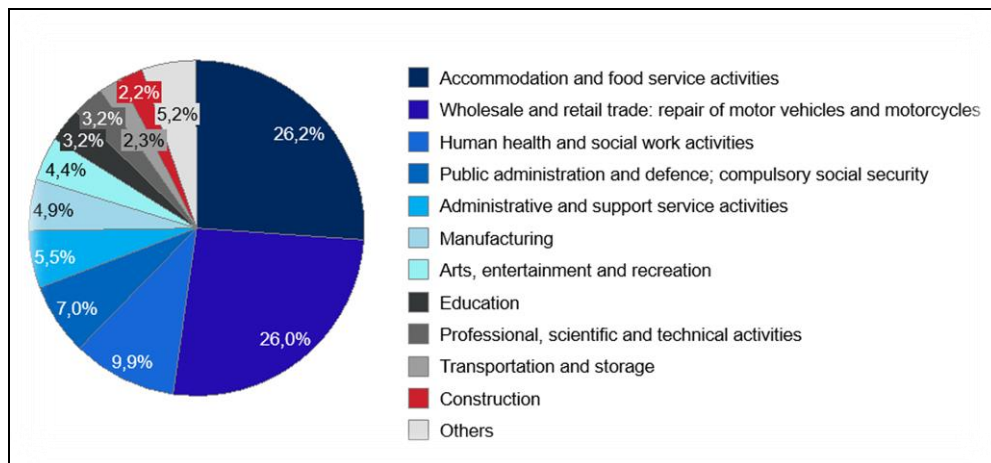


8. Appendix

Figure 1.1- Shares of the total number of student jobs offered by each sector of economic activity to student workers in 2016



Source - National Social Security Office, Annual Statistics on Student Work, 2016

Other exceptions to the general social security contribution schemes (Source: UCM, L'occupation des étudiants, Juin 2018)

- In the HORECA sector (Joint Commission 302), a student can cumulate his contingent under the student occupation contract (i.e. 475 hours of work per calendar year) with his contingent under the occasional worker status. The benefit attached to such status relates to the fact that, for a maximum of 50 days, the student will be subject to the ordinary social security contributions of 13.07% computed on the lower and fixed hourly rate of 7.90€¹ (rather than on the current income).
- Students occupied within the sociocultural sector (JC 329.02) can work an additional amount of 25 days (exempt from social security contributions) along with their contingent of 475 hours per calendar year. However, this possibility is applicable only if the two occupations are clearly distinguished from one another.
- In the agricultural and horticultural sector (JC 144-145), the student can cumulate a job under the student occupation contract (maximum of 475 hours per calendar year) and under the occasional worker status (maximum of 65 days). The employer and the student must decide together whether to conclude under the student occupation contract or under the occasional worker status.

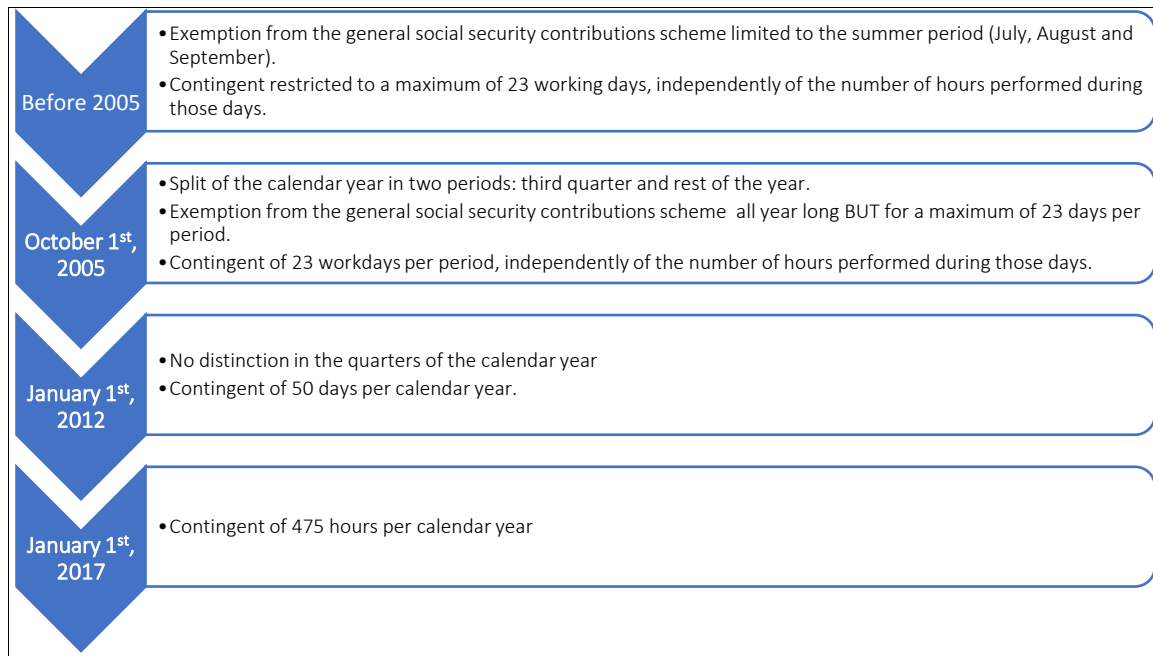
¹ This hourly rate is equivalent to a daily fee of 47.40€.

Figure 2.1 - Gross minimum wage for the remuneration of students in force since June 2017

| Age | % | Monthly Salary <i>Gross</i> | Hourly salary (38H/week) <i>Gross</i> |
|--------|-----|--------------------------------|--|
| 21+ | 100 | 1562.59€ | 9.49€ |
| 20 | 94 | 1468.83€ | 8.92€ |
| 19 | 88 | 1375.08€ | 8.35€ |
| 18 | 82 | 1281.32€ | 7.78€ |
| 17 | 76 | 1187.56€ | 7.21€ |
| 16 & - | 70 | 1093.81€ | 6.64€ |

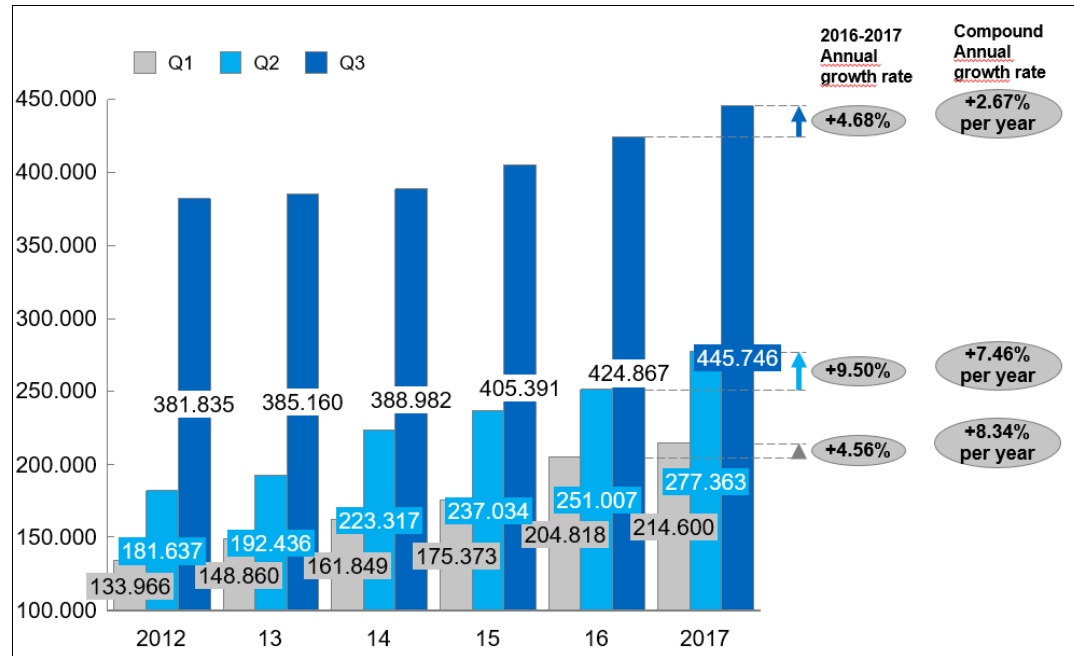
Source - Service Public Fédéral, Emploi Travail et Concertation Sociale, 2017

Figure 2.2 -Timeline of the successive reforms of the student occupation contract



Source -Les Jeunes CSC, 2017

Figure 2.3- Evolution of the quarterly number of students occupied under the student occupation contract between 2012 and 2017

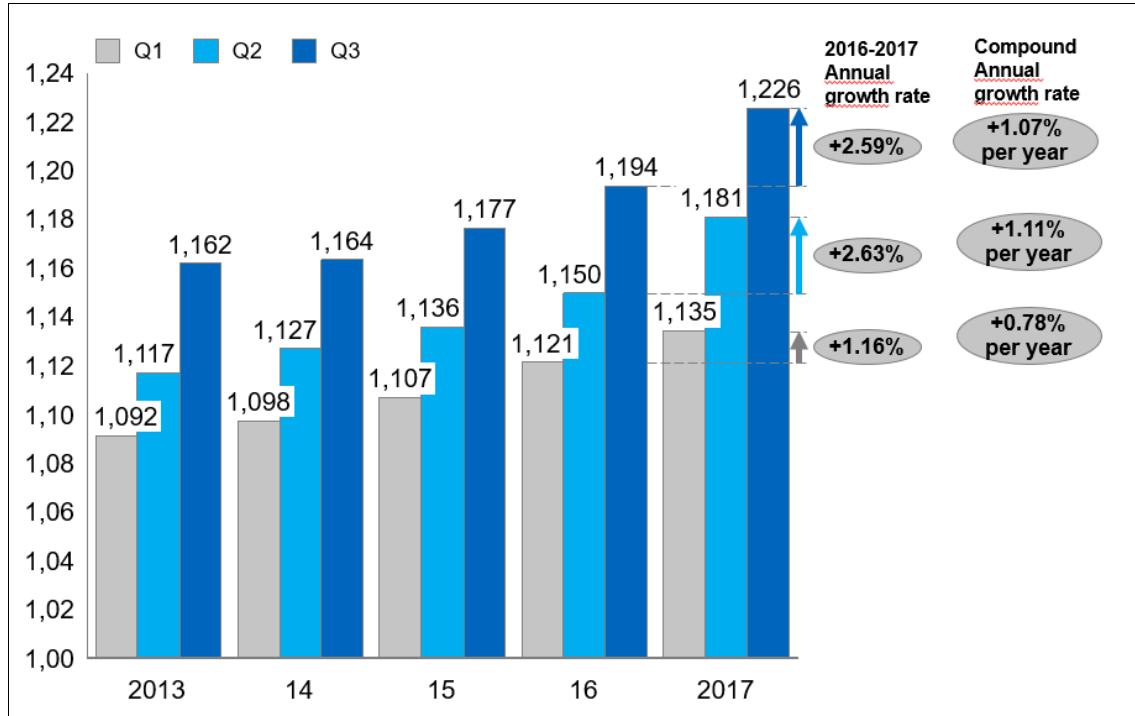


Source - National Social Security Office - Data extracted from their brochures related to the "Occupation of students" – Computations Romane Steisel

The CAGR refers to the average of the annual growth rates computed over the period 2012-2017. It is calculated as follow²: $CAGR = \left(\frac{\text{Ending value}}{\text{Beginning value}} \right)^{\frac{1}{\text{number of years}}} - 1$

² Compound Annual Growth Rate formula – Investopedia.

Figure 2.4 - Evolution of the quarterly average number of jobs held by one student between 2013 & 2017



Source - National Social Security Office - Data extracted from their brochures related to the "Occupation of students" – Computations Romane Steisel

CAGR are calculated according to the formula: $CAGR = \left(\frac{\text{Ending value}}{\text{Beginning value}} \right)^{\frac{1}{\text{number of years}}} - 1$. It refers to average of the annual growth rates of the ratio $\frac{\text{Total number of working positions}}{\text{Total number of student workers}}$, computed over the period 2013-2017.

Figure 2.5 -CAGR and annual growth rate of the quarterly average number of jobs held by a student between 2013 and 2017

| | Number of jobs that a student holds during Q1 | Annual growth rate for Q1 | Number of jobs that a student holds during Q2 | Annual growth rate for Q2 | Number of jobs that a student holds during Q3 | Annual growth rate for Q3 |
|------------------------|---|---------------------------|---|---------------------------|---|---------------------------|
| 2013 | 1.091576 | | 1.117312 | | 1.162104 | |
| 2014 | 1.097585 | 0.55% | 1.127232 | 0.88% | 1.163769 | 0.14% |
| 2015 | 1.10716 | 0.86% | 1.136069 | 0.78% | 1.176501 | 1.08% |
| 2016 | 1.121483 | 1.28% | 1.149876 | 1.20% | 1.19407 | 1.47% |
| 2017 | 1.134609 | 1.16% | 1.180951 | 2.63% | 1.225765 | 2.59% |
| CAGR between 2013-2017 | 0.78% | | 1.11% | | 1.07% | |

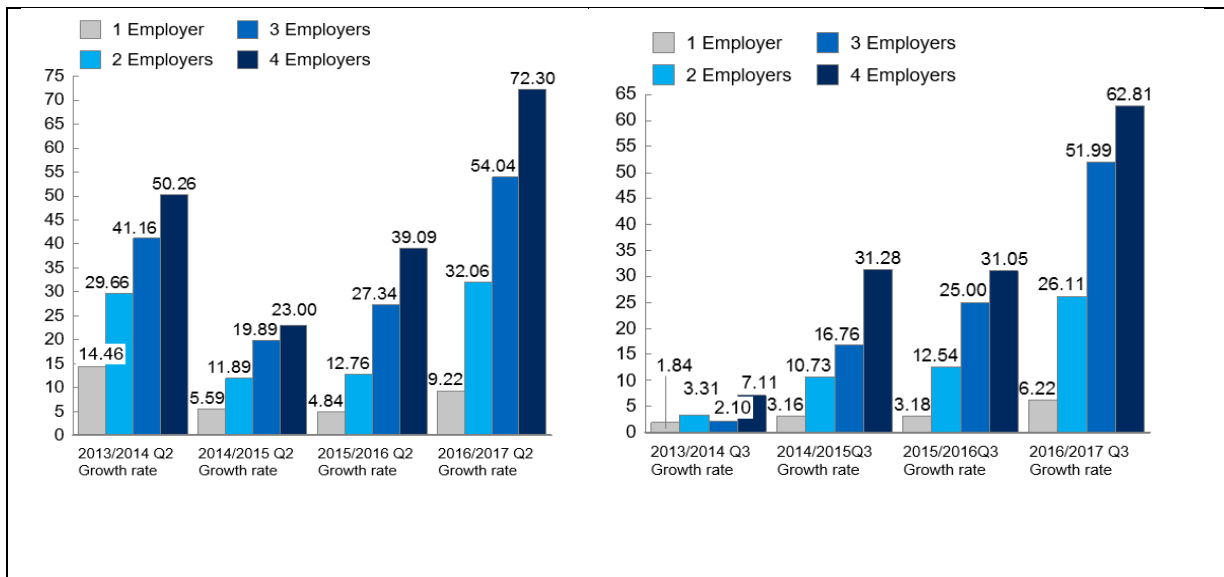
Source - National Social Security Office - Data extracted from brochures related to the "Occupation of students" – Computations Romane Steisel

Figure 2.6 - Quarterly growth of the number of students occupied by respectively 1, 2, 3, 4, 5, 6, 7 or 8 different employers between 2013-2017

| | 2013 | | | 2014 | | | 2015 | | | 2016 | | | 2017 | | |
|-------------|--------|--------|--------|--------|--------|--------|--------|--------|--------|--------|--------|---------------|--------|--------|---------------|
| | Q1 | Q2 | Q3 | Q1 | Q2 | Q3 | Q1 | Q2 | Q3 | Q1 | Q2 | Q3 | Q1 | Q2 | Q3 |
| 1 Employer | 134369 | 169681 | 304817 | 145592 | 194209 | 310440 | 156441 | 205068 | 320243 | 179804 | 215003 | 330414 | 189625 | 234820 | 350959 |
| 2 Employers | 10060 | 16111 | 44976 | 11759 | 208898 | 46464 | 13918 | 23373 | 51450 | 18124 | 26356 | 57901 | 21197 | 34807 | 73018 |
| 3 Employers | 861 | 1567 | 5101 | 1121 | 2212 | 5208 | 1389 | 2652 | 6081 | 2046 | 3377 | 7601 | 2517 | 5202 | 11553 |
| 4 Employers | 110 | 191 | 591 | 127 | 287 | 633 | 154 | 353 | 831 | 292 | 491 | 1089 | 400 | 846 | 1773 |
| 5 Employers | 10 | 30 | 69 | 23 | 40 | 94 | 31 | 66 | 132 | 41 | 94 | 177 | 77 | 173 | 349 |
| 6 Employers | 6 | 8 | 13 | 4 | 8 | 15 | 2 | 11 | 24 | 13 | 20 | 28 | 20 | 26 | 59 |
| 7 Employers | 1 | 0 | 2 | 3 | 1 | 1 | 4 | 2 | 6 | 2 | 4 | 4 | 5 | 5 | 10 |
| 8 Employers | 0 | 0 | 0 | 0 | 0 | 0 | 1 | 1 | 2 | 0 | n.a. | 3 | 2 | 6 | 4 |

Source - National Social Security Office - Data extracted from brochures related to the "Occupation of students" –

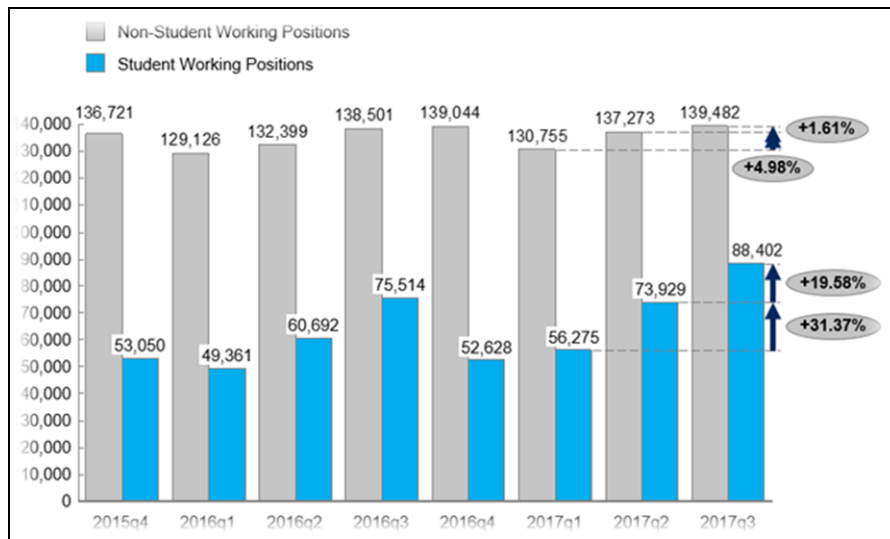
Figure 2.7 - Quarterly growth rate of the number of students occupied by respectively 1, 2, 3, 4, 5, 6, 7 or 8 different employers between 2013-2017 for the second and third quarter



Source - National Social Security Office - Data extracted from brochures related to the "Occupation of students" – Computations Romane Steisel

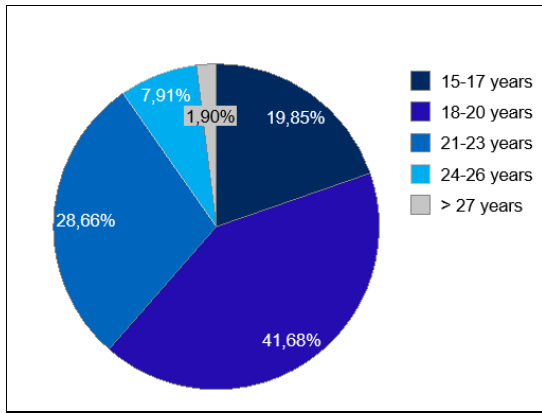
Figure 2.8 - Focus on the HORECA - Evolution of the quarterly number of working positions

| | 2015q4 | 2016q1 | 16q2 | 16q3 | 16q4 | 2017q1 | 17q2 | 17q3 |
|----------------------------------|--------|--------|--------|--------|--------|--------|--------|--------|
| NON-STUDENT Working Positions | 136721 | 129126 | 132399 | 138501 | 139044 | 130755 | 137273 | 139482 |
| STUDENT Working Positions | 53050 | 49361 | 60692 | 75514 | 52628 | 56275 | 73929 | 88402 |



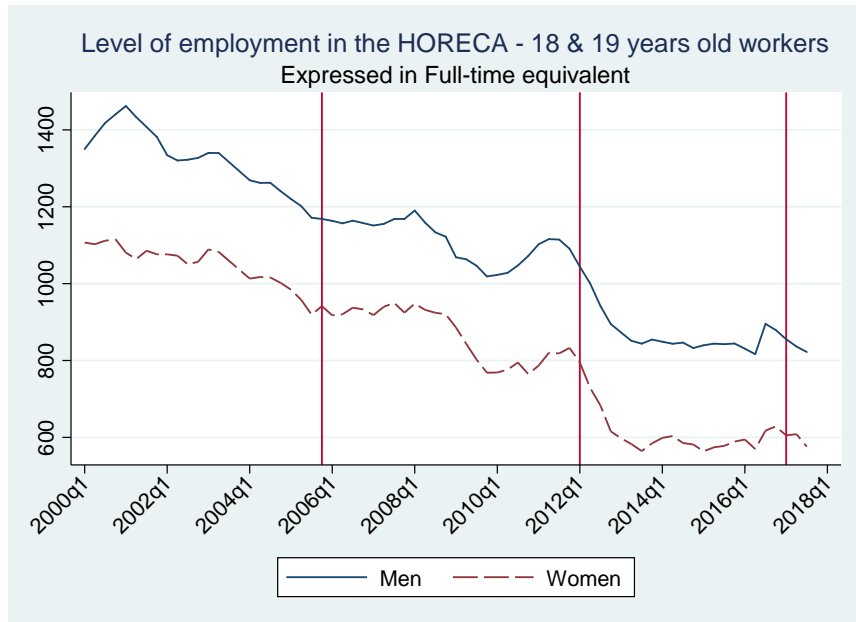
Source - National Social Security Office - Data extracted from brochures related to the "Occupation of students" – Computations Romane Steisel

Figure 3.1 - Share of working positions held by age-specific students during 2016

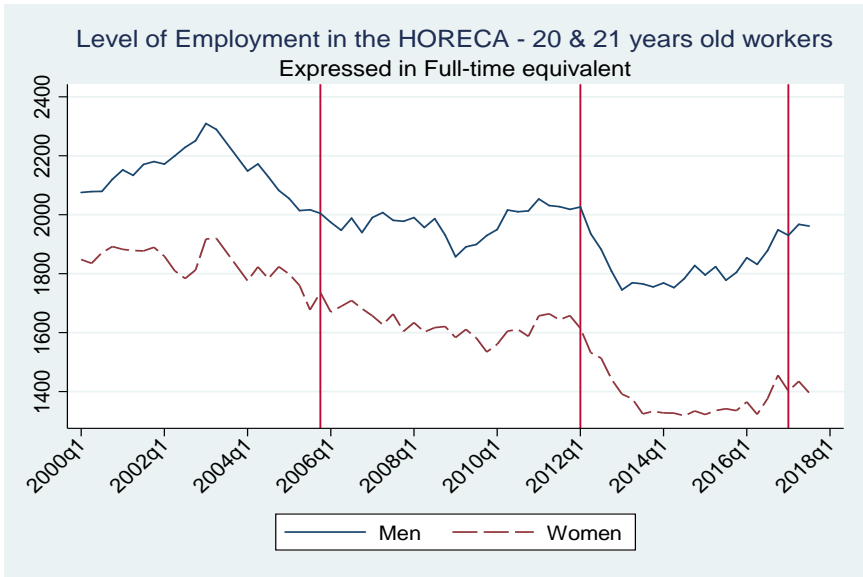


Source - National Social Security Organization, Annual Statistics on Student Work, 2016

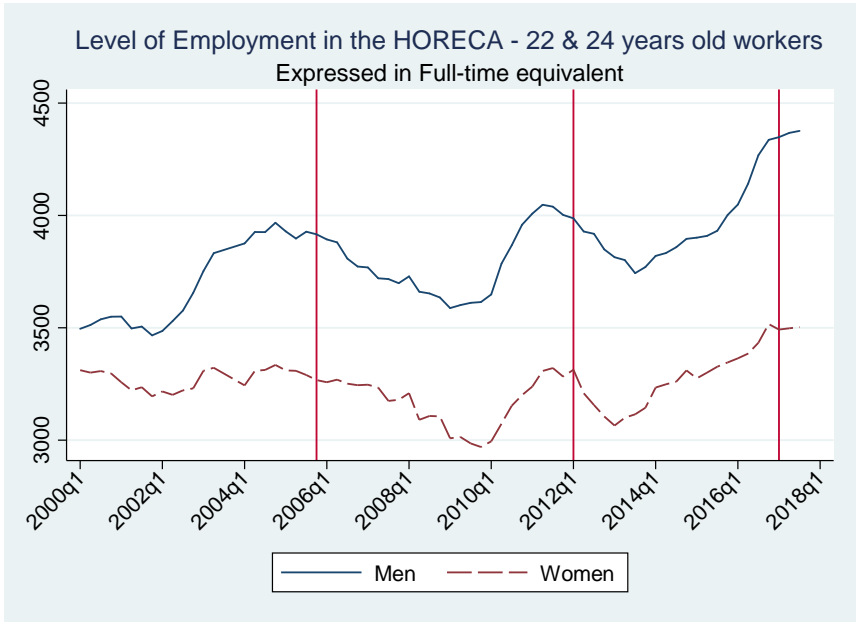
Figure 3.2 - Quarterly evolution of the gender and age-specific employment level of non-student workers in the HORECA



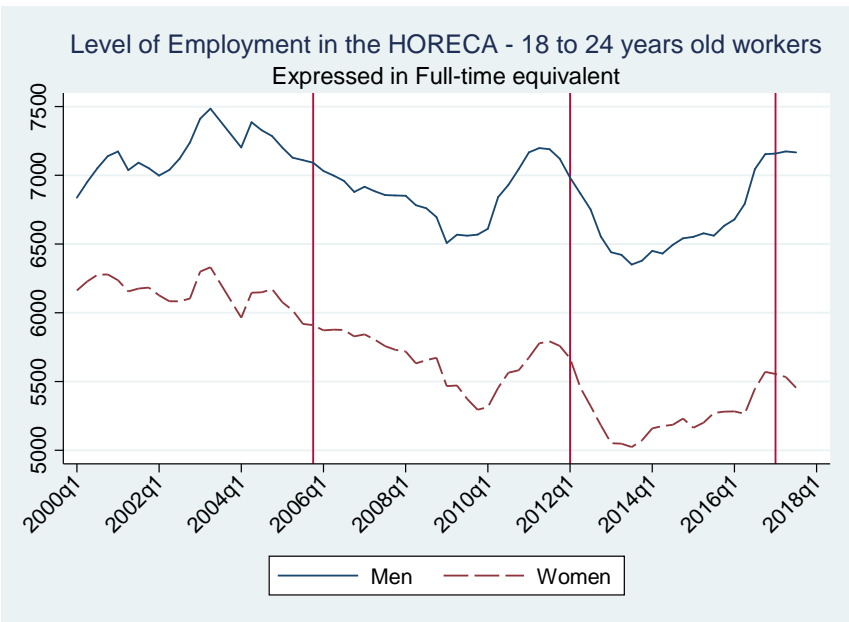
* Vertical lines stand for the reforms of the student occupation contract (2005q4, 2012q1 and 2017q1)



* Vertical lines stand for the reforms of the student occupation contract (2005q4, 2012q1 and 2017q1)

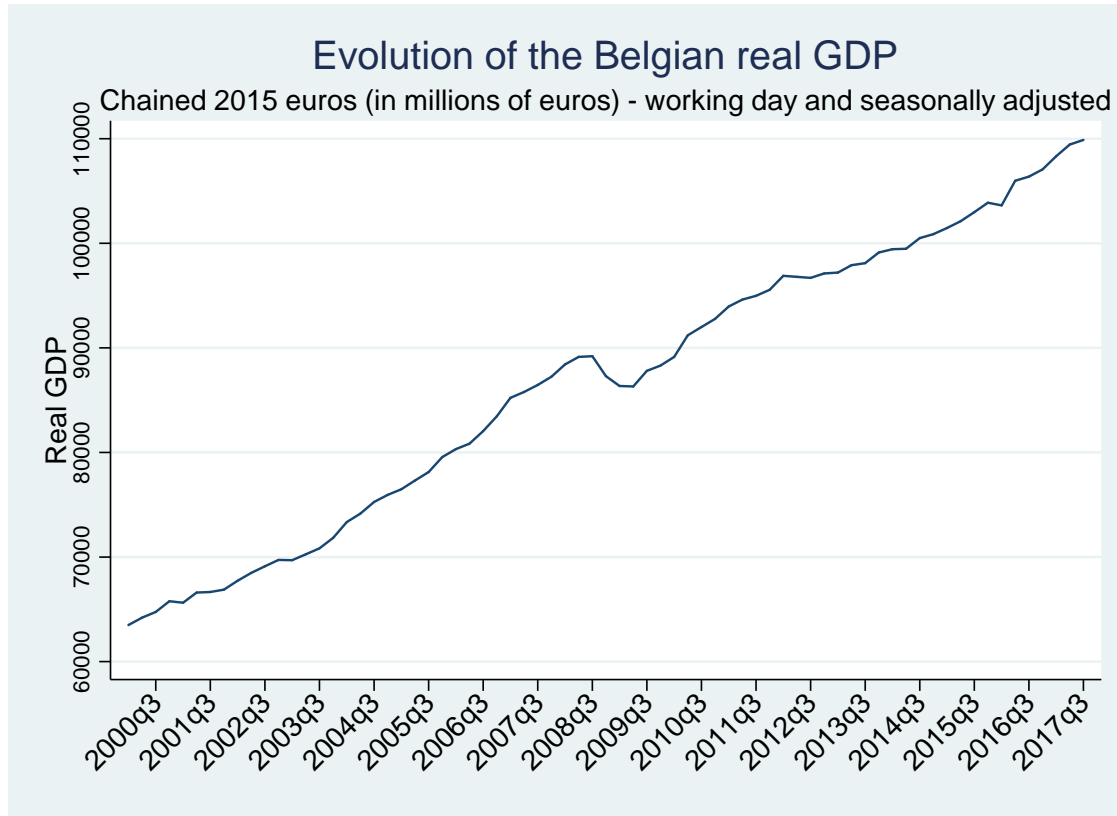


* Vertical lines stand for the reforms of the student occupation contract (2005q4, 2012q1 and 2017q1)



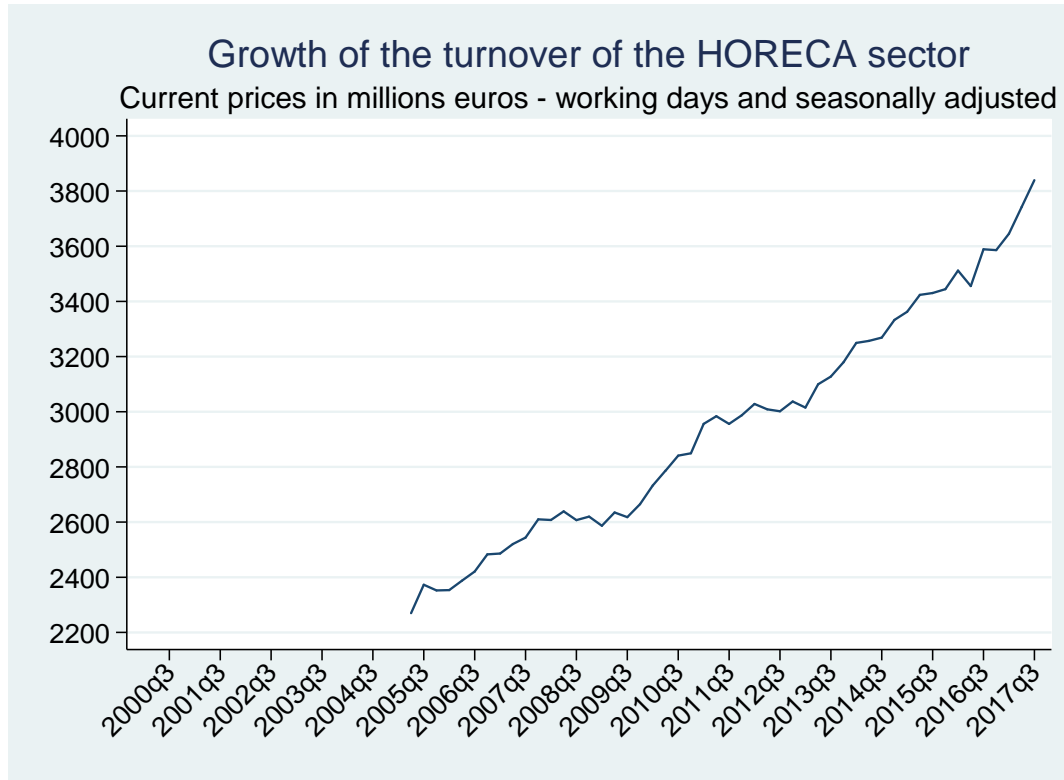
*Vertical lines stand for the reforms of the student occupation contract (2005q4, 2012q1 and 2017q1)

Figure 3.3- Evolution of the seasonally adjusted Belgian quarterly real GDP in chained euros, reference year 2015 (million euros), 2000-2018



Source - National Bank of Belgium

Figure 3.4- Evolution of the seasonally adjusted quarterly turnover of the HORECA sector (million euros), 2005-2018



Source – STATBEL

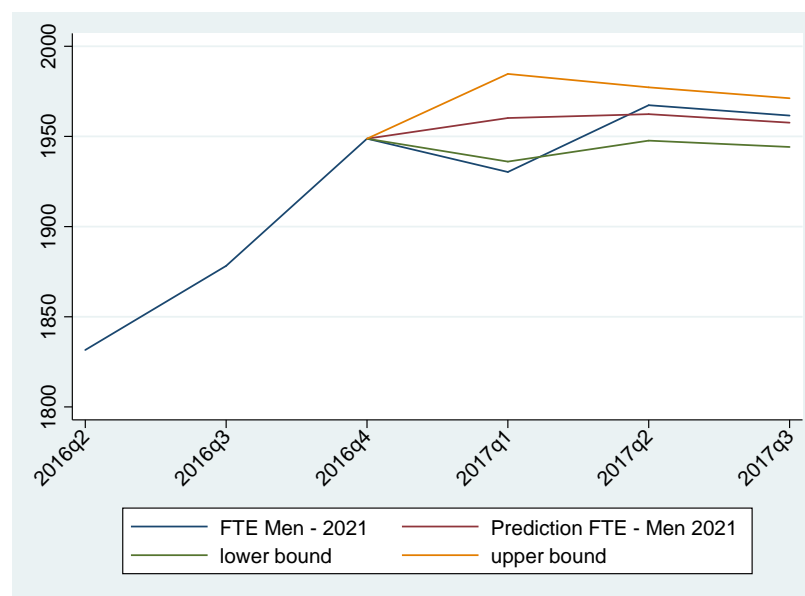
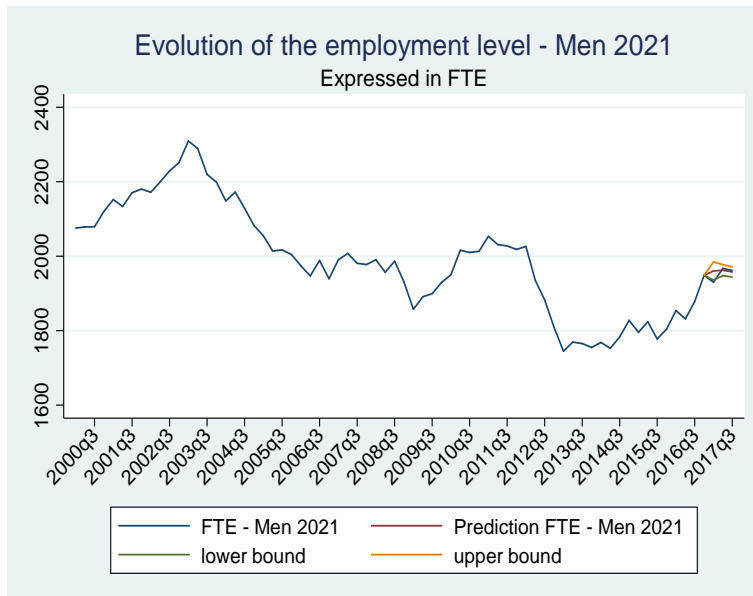
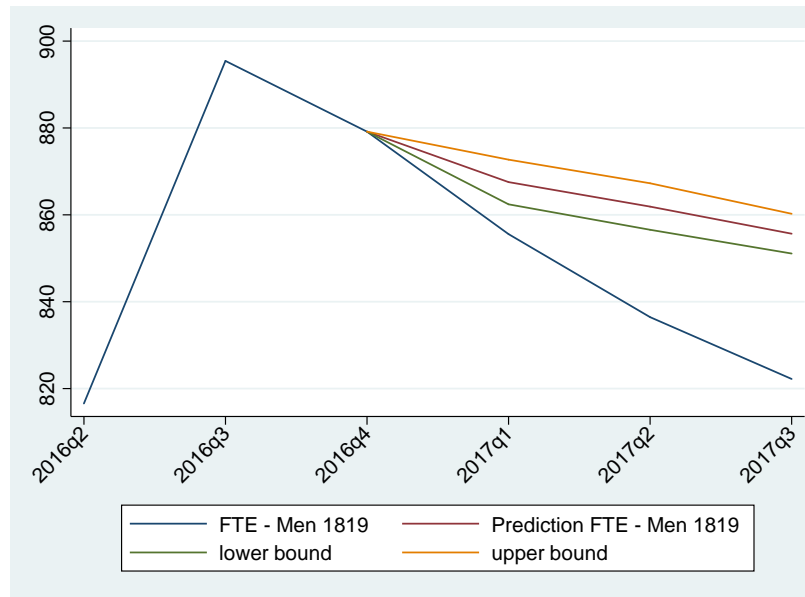
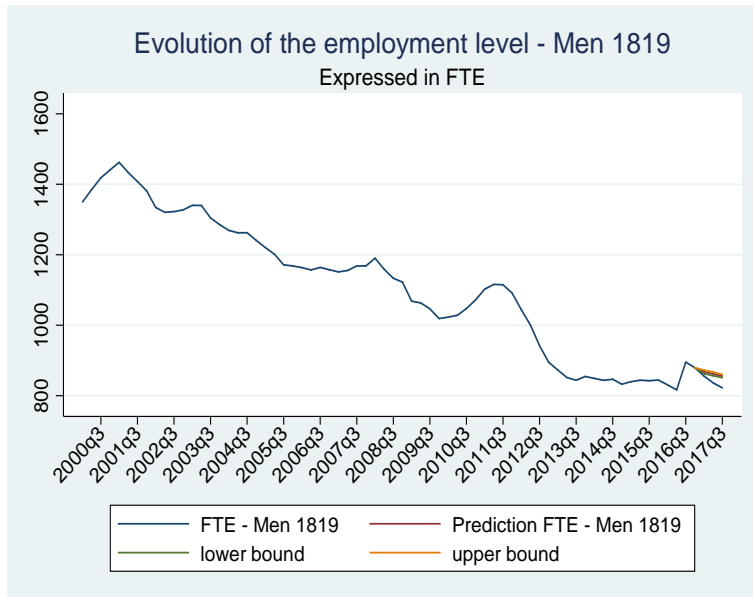
Figure 5.1 - The quarterly variation of the employment level by gender and age group - OLS estimates

| | (1) | (2) | (3) | (3) |
|---|-----------------------------------|-----------------------------------|-----------------------------------|-----------------------------------|
| VARIABLES | $\Delta\log(\text{EL-Men1819})_t$ | $\Delta\log(\text{EL-Men2021})_t$ | $\Delta\log(\text{EL-Men2224})_t$ | $\Delta\log(\text{EL-Men1824})_t$ |
| $\Delta\log(\text{Employment Level})_{t-1}$ | 0.345*** | 0.0732 | 0.522*** | 0.376*** |
| | (0.0847) | (0.123) | (0.106) | (0.107) |
| $\Delta\log(\text{GDP})_t$ | 0.0388 | 0.766 | 0.359 | 0.279 |
| | (0.428) | (0.525) | (0.285) | (0.317) |
| $\Delta\log(\text{GDP})_{t-1}$ | 1.130** | 0.301 | -0.0141 | 0.382 |
| | (0.432) | (0.543) | (0.288) | (0.323) |
| Cash Register | 0.101*** | 0.0281 | 0.0178* | 0.0298** |
| | (0.0155) | (0.0190) | (0.0104) | (0.0115) |
| Constant | -0.0108*** | -0.00499* | 0.000140 | -0.00252 |
| | (0.00246) | (0.00285) | (0.00155) | (0.00172) |
| Observations | 69 | 69 | 69 | 69 |
| R-squared | 0.548 | 0.112 | 0.372 | 0.346 |

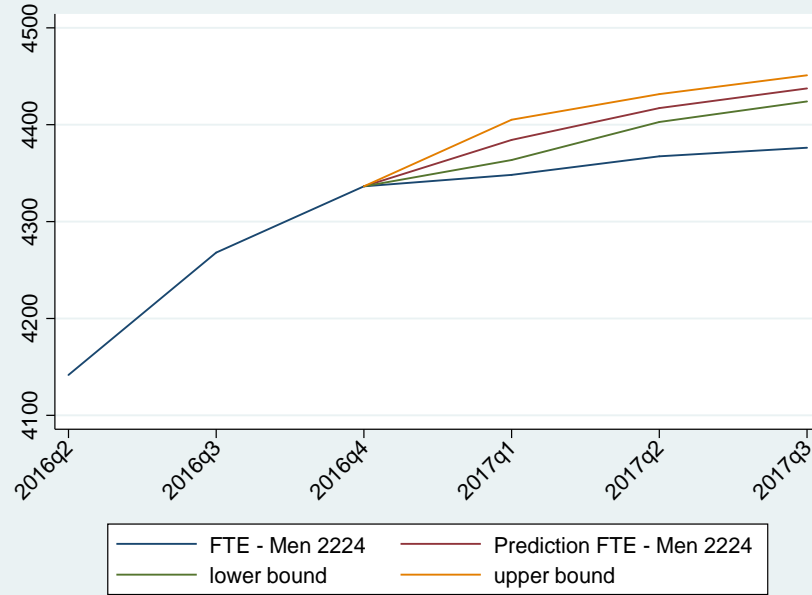
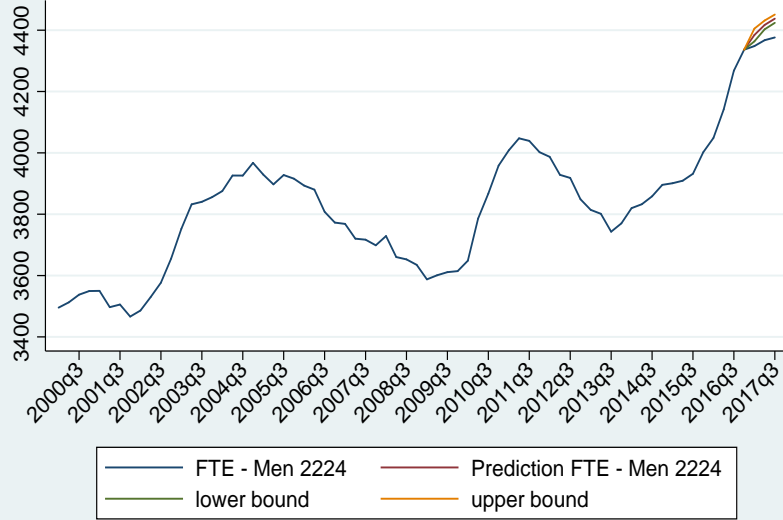
| | (1) | (2) | (3) | (4) |
|--|-------------------------------------|-------------------------------------|-------------------------------------|-------------------------------------|
| VARIABLES | $\Delta\log(\text{EL-Women1819})_t$ | $\Delta\log(\text{EL-Women2021})_t$ | $\Delta\log(\text{EL-Women2224})_t$ | $\Delta\log(\text{EL-Women1824})_t$ |
| $\Delta.\log(\text{Employment level})_{t-1}$ | 0.143* | -0.112 | 0.136 | 0.237*** |
| | (0.0830) | (0.114) | (0.100) | (0.0752) |
| $\Delta.\log(\text{GDP})_t$ | 0.300 | 0.117 | 0.278 | 0.147 |
| | (0.823) | (0.681) | (0.365) | (0.349) |
| $\Delta.\log(\text{GDP})_{t-1}$ | 1.331 | 0.178 | 0.516 | 0.769** |
| | (0.815) | (0.678) | (0.367) | (0.345) |
| Cash Register | 0.0922*** | 0.0408* | 0.0116 | 0.0342*** |
| | (0.0287) | (0.0242) | (0.0127) | (0.0121) |
| Constant | -0.0151*** | -0.00625 | -0.00229 | -0.00507*** |
| | (0.00450) | (0.00374) | (0.00197) | (0.00188) |
| Observations | 65 | 65 | 65 | 65 |
| R-squared | 0.244 | 0.072 | 0.140 | 0.336 |

Standard errors in parentheses (***) $p < 0.01$, ** $p < 0.05$, * $p < 0.1$

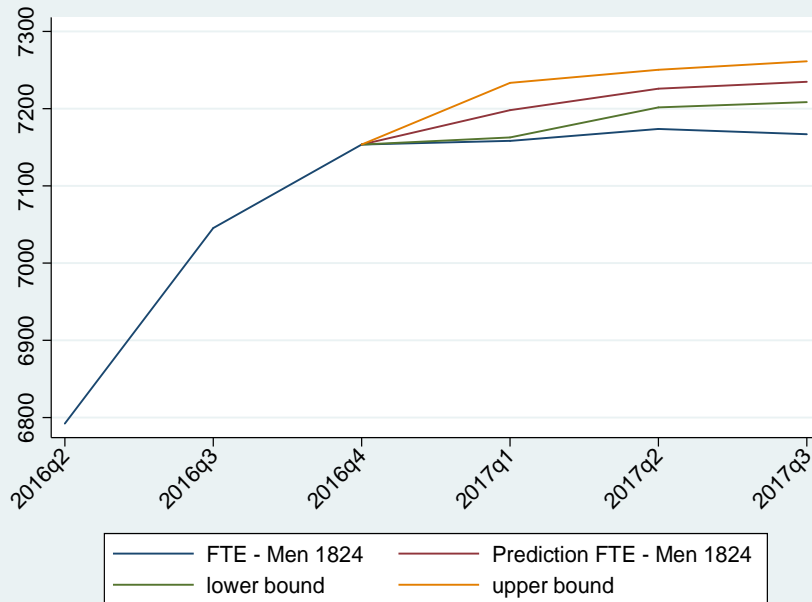
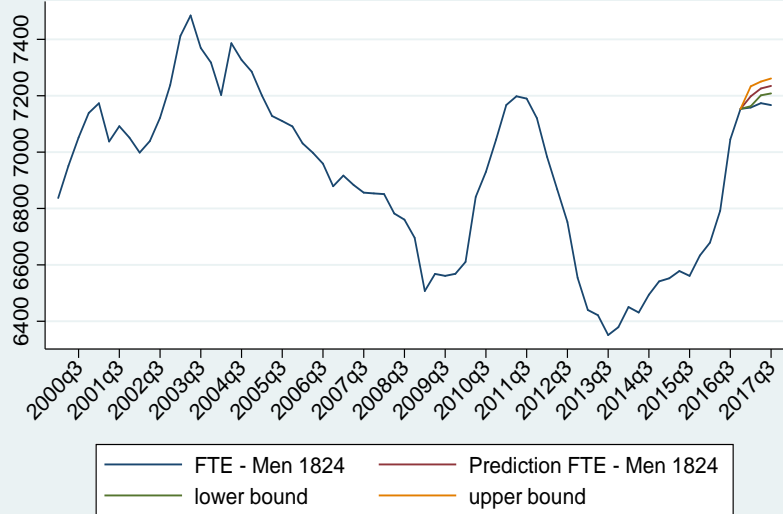
Figure 4.2 - The quarterly employment level by gender and age group, 2000q1 - 2017q3, observed series and predicted values (forecasts from 2017q1) - 95% confidence interval of the forecasts



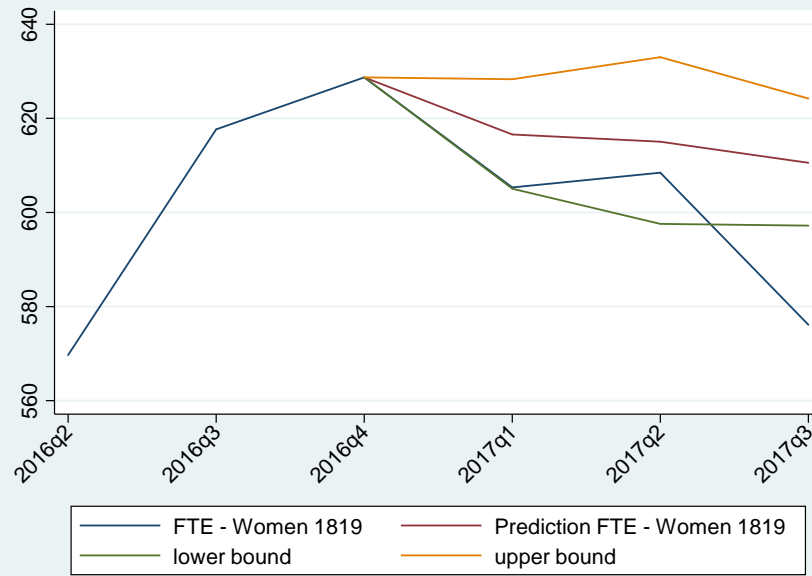
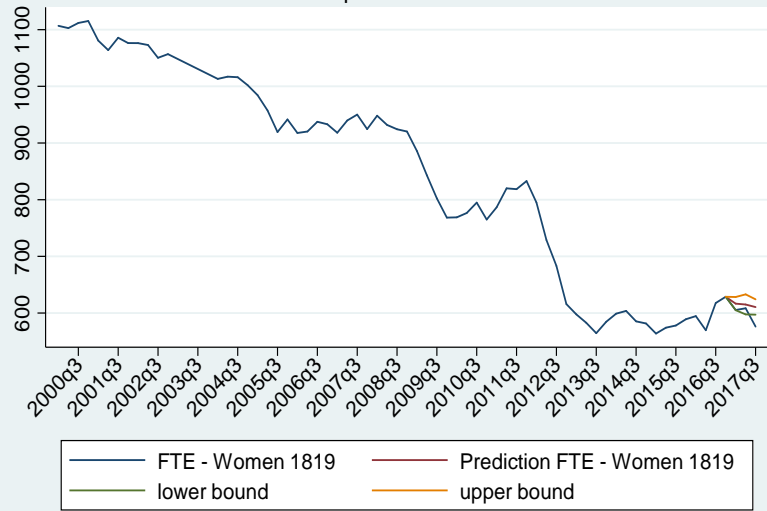
Evolution of the employment level - Men 2224
Expressed in FTE



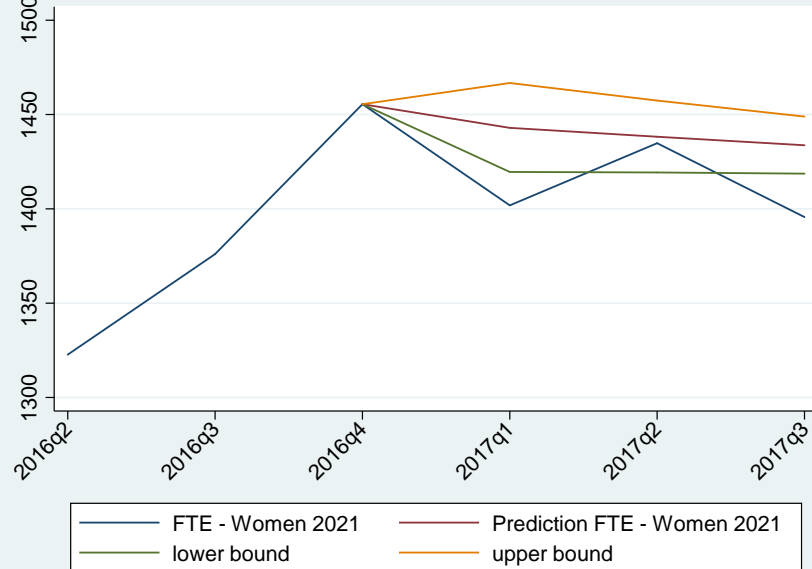
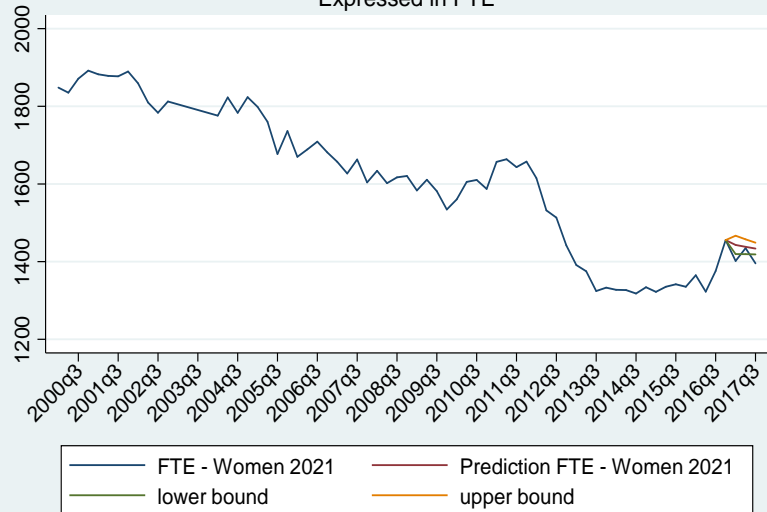
Evolution of the employment level - Men 1824
Expressed in FTE



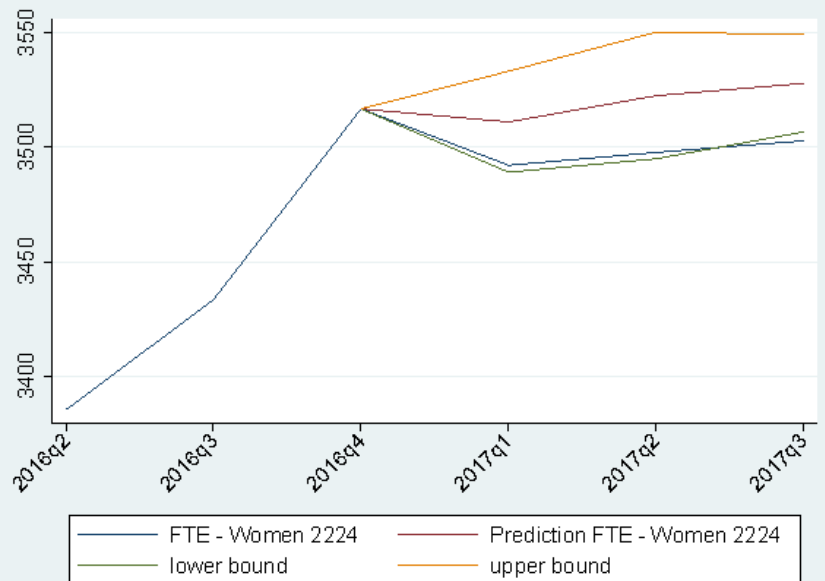
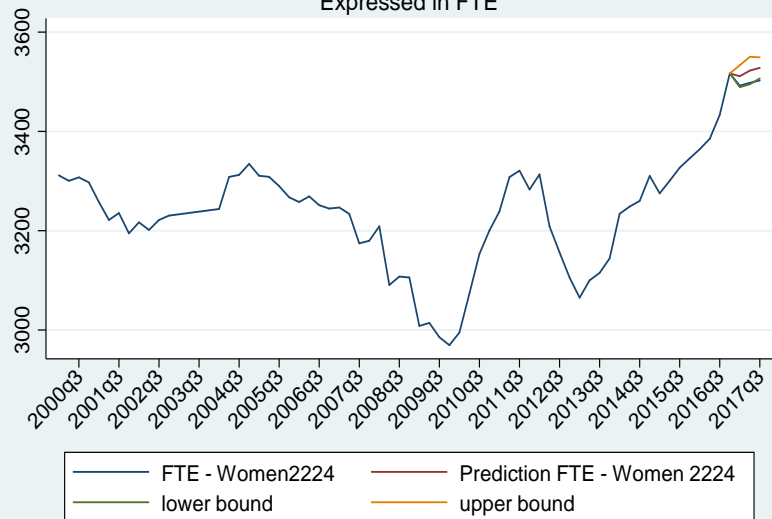
Evolution of the employment level - Women 1819
Expressed in FTE



Evolution of the employment level - Women 2021
Expressed in FTE



Evolution of the employment level - Women 2224
Expressed in FTE



Evolution of the employment level - Women 1824
Expressed in FTE

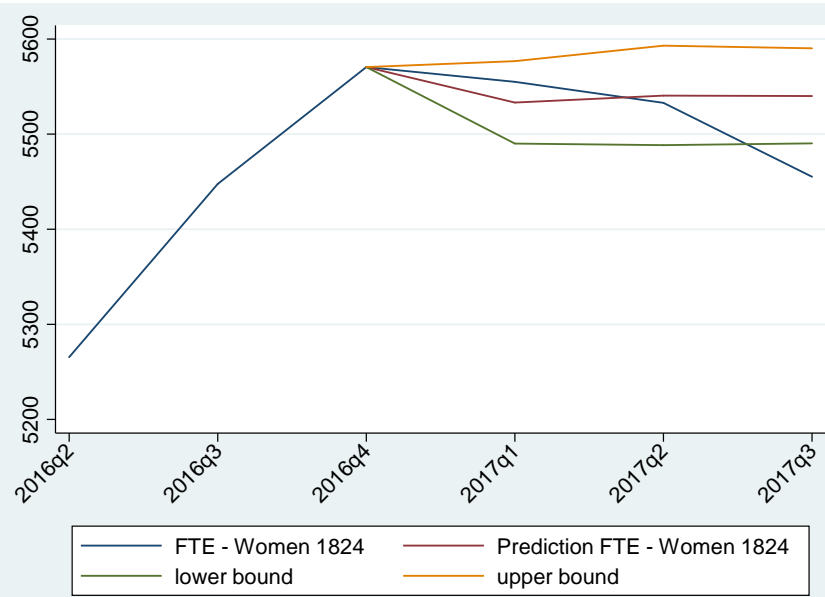
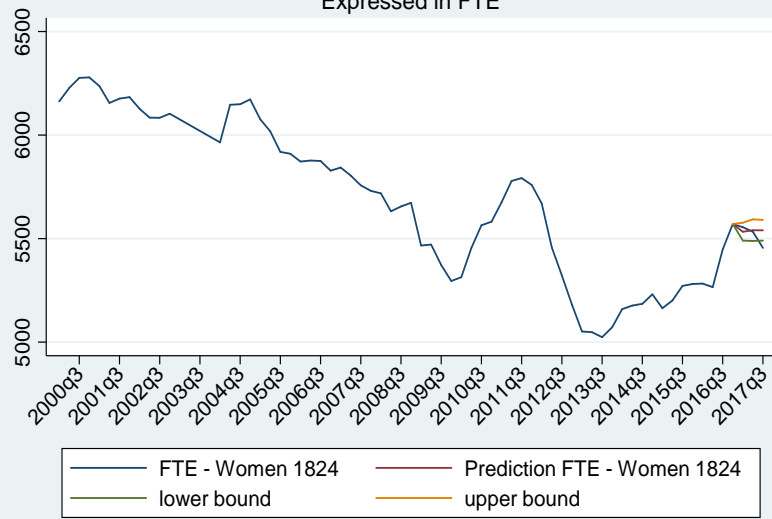


Figure 5.3 - The impact of the reform of the student occupation contract on the quarterly employment level (expressed in FTE) by genders aged 18-19, 20-21, 22-24 and 18-24 in 2017q3

| | Observed value | Predicted value (s.e.) | Impact ^a (in FTE) | Reduction in FTE (in %) ^b |
|----------------|----------------|------------------------|------------------------------|--------------------------------------|
| Men aged 18-19 | 822.22 | 855.66 (0.002675) | -33.44 | -3.9% |
| 95% CI | | {851.09 ; 860.25} | | |
| 90% CI | | {851.84 ; 859.49} | | |
| Men aged 20-21 | 1961.58 | 1957.64 (0.003454) | 3.94 | 0.2% |
| 95% CI | | {1944.17 ; 1971.21} | | |
| 90% CI | | {1946.38 ; 1968.97} | | |
| Men aged 22-24 | 4376.3 | 4437.5 (0.001524) | -61.2 | -1.38% |
| 95% CI | | {4423.99 ; 4451.05} | | |
| 90% CI | | {4426.21 ; 4448.81} | | |
| Men - total | 7166.88 | 7234.826 (0.001827) | -67.95 | -0.94% |
| 95% CI | | {7208.45 ; 7261.3} | | |
| 90% CI | | {7212.79 ; 7256.93} | | |

| | Observed | Predicted value (s.e.) | Impact ^a (in FTE) | Reduction in FTE (in %) ^b |
|------------------|----------------|------------------------|------------------------------|--------------------------------------|
| Women aged 18-19 | 576.14 | 610.57 (0.011062) | -34.43 | -5.64% |
| 95% CI | | {597.20 ; 624.23} | | |
| 90% CI | | {599.39 ; 621.95} | | |
| Women aged 20-21 | 1395.64 | 1433.72 (0.0052783) | -38.08 | -2.73% |
| 95% CI | | {1418.66 ; 1448.94} | | |
| 90% CI | | {1421.13 ; 1446.42} | | |
| Women aged 22-24 | 3502.86 | 3527.97 (0.0030131) | -25.11 | -0.71% |
| 95% CI | | {3506.77 ; 3549.30} | | |
| 90% CI | | {3510.26 ; 3545.77} | | |
| Women - total | 5455.18 | 5540.06 (0.0045104) | -84.88 | -1.53% |
| 95% CI | | {5490.30 ; 5590.27} | | |
| 90% CI | | {5498.47 ; 5581.96} | | |

^a The impact is measured as the difference in the number of full-time equivalent between the observed and the predicted value

^b Percentage loss in terms of the predicted value: $\frac{\text{Impact (in FTE)}}{\text{Predicted value}}$

Figure 5.4 – Observed and predicted values of the employment level (expressed in FTE) by genders aged 18-19, 20-21, 22-24 and 18-24 in 2017q1, 2017q2 and 2017q3 and the 95% confidence interval – General specification

| | | Observed values | Predicted values | Confidence Interval – 95% |
|-----------|--------|-----------------|------------------|---------------------------|
| | 2017q1 | 855.563 | 867.54 | {862.41 ; 872.70} |
| Men 18-19 | 2017q2 | 836.449 | 861.90 | {856.56 ; 867.27} |
| | 2017q3 | 822.221 | 855.66 | {851.09 ; 860.25} |
| | 2017q1 | 1930.29 | 1960.217 | {1936.04 ; 1984.70} |
| Men 20-21 | 2017q2 | 1967.31 | 1962.385 | {1947.65 ; 1977.23} |
| | 2017q3 | 1961.58 | 1957.641 | {1944.17 ; 1971.21} |
| | 2017q1 | 4348.24 | 4384.295 | {4363.53 ; 4405.16} |
| Men 22-24 | 2017q2 | 4367.38 | 4417.182 | {4402.82 ; 4431.60} |
| | 2017q3 | 4376.3 | 4437.499 | {4423.99 ; 4451.05} |
| | 2017q1 | 7158.28 | 7197.993 | {7162.72 ; 7233.44} |
| Men 18-24 | 2017q2 | 7173.76 | 7225.931 | {7201.60 ; 7250.34} |
| | 2017q3 | 7166.88 | 7234.826 | {7208.45 ; 7261.30} |

* Cells in bold point out to values lying outside the confidence interval

| | | Observed values | Predicted values | Confidence Interval - 95% |
|-------------|--------|-----------------|------------------|---------------------------|
| | 2017q1 | 605.33 | 616.58 | {605.06 ; 628.32} |
| Women 18-19 | 2017q2 | 608.46 | 615.04 | {597.58 ; 633.02} |
| | 2017q3 | 576.14 | 610.57 | {597.20 ; 624.23} |
| | 2017q1 | 1401.85 | 1442.95 | {1419.56 ; 1466.73} |
| Women 20-21 | 2017q2 | 1434.80 | 1438.24 | {1419.30 ; 1457.43} |
| | 2017q3 | 1395.64 | 1433.72 | {1418.66 ; 1448.94} |
| | 2017q1 | 3492.15 | 3511.12 | {3489.10 ; 3533.28} |
| Women 22-24 | 2017q2 | 3497.80 | 3522.57 | {3494.99 ; 3550.37} |
| | 2017q3 | 3502.86 | 3527.97 | {3506.77 ; 3549.30} |
| | 2017q1 | 5554.98 | 5533.25 | {5490.08 ; 5576.77} |
| Women 18-24 | 2017q2 | 5532.91 | 5540.51 | {5488.47 ; 5593.05} |
| | 2017q3 | 5455.18 | 5540.06 | {5490.30 ; 5590.27} |

* Cells in bold point out to values lying outside the confidence interval

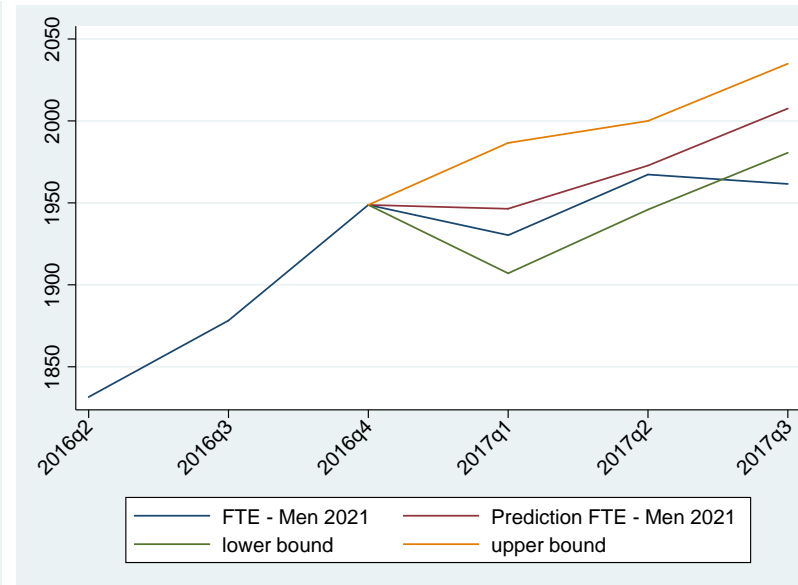
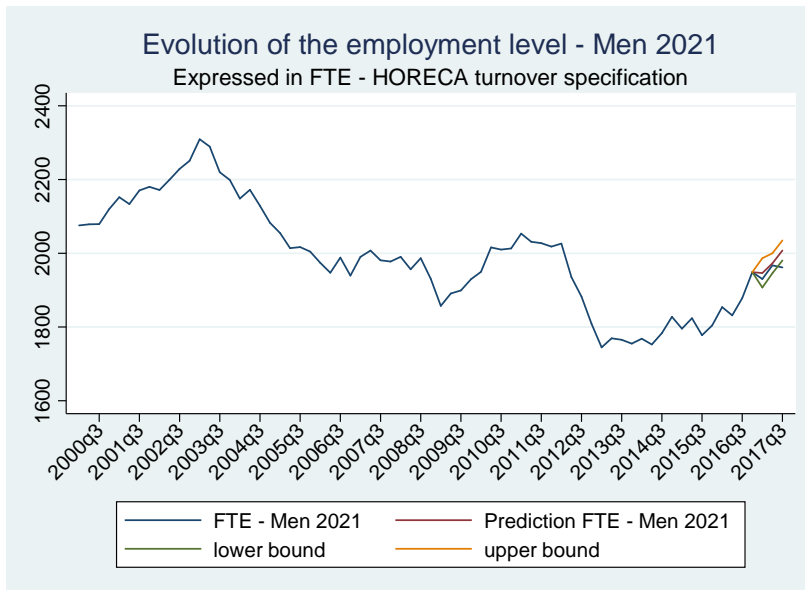
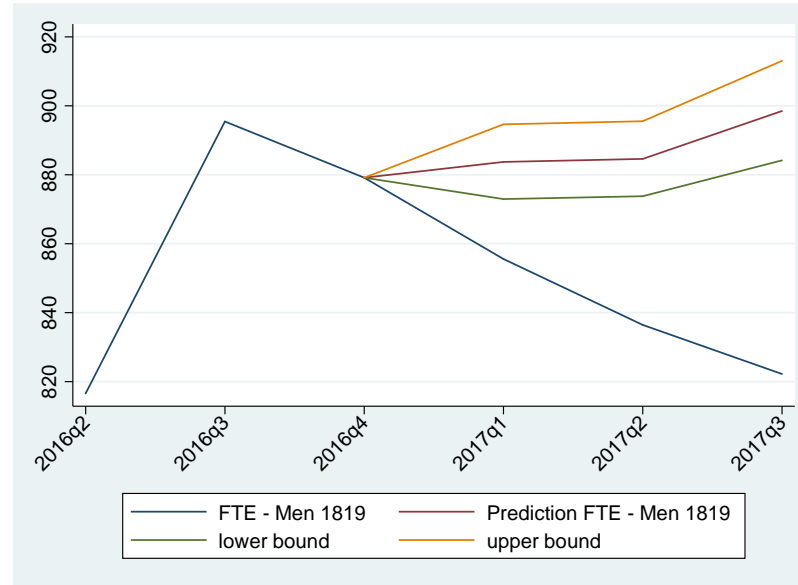
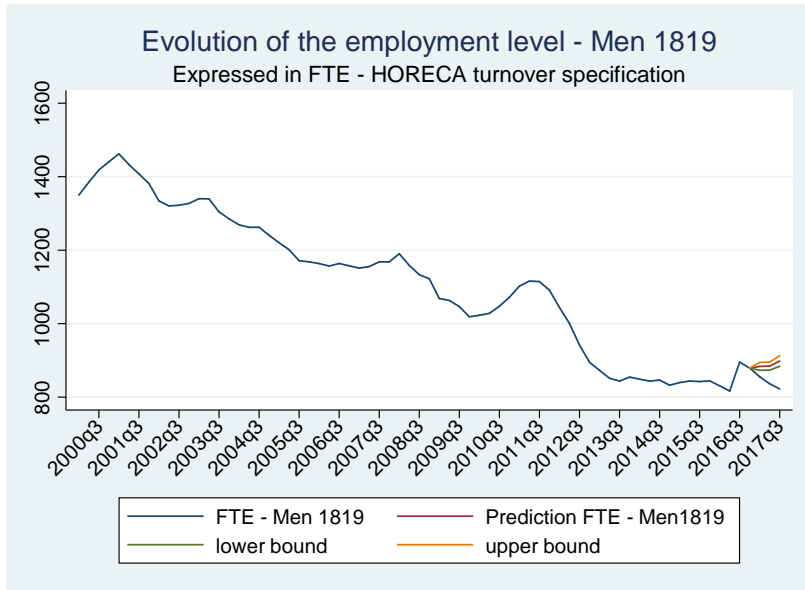
Figure 5.5 -The quarterly variation of the employment level by gender and age group - OLS estimates

| | (1) | (2) | (3) | (4) |
|---|-------------------------------------|-------------------------------------|-------------------------------------|-------------------------------------|
| VARIABLES | $\Delta\log(\text{EL-Men } 1819)_t$ | $\Delta\log(\text{EL-Men } 2021)_t$ | $\Delta\log(\text{EL-Men } 2224)_t$ | $\Delta\log(\text{EL-Men } 1824)_t$ |
| | | | | |
| $\Delta\log(\text{Employment Level})_{t-1}$ | 0.216** (0.102) | -0.107 (0.154) | 0.456*** (0.136) | 0.370*** (0.130) |
| $\Delta\log(\text{Horeca_turnover})_t$ | 0.428** (0.199) | 0.760*** (0.241) | 0.107 (0.128) | 0.233* (0.127) |
| $\Delta\log(\text{Horeca_turnover})_{t-1}$ | 0.550*** (0.203) | 0.425 (0.254) | 0.179 (0.132) | 0.207 (0.135) |
| $\Delta\log(\text{Horeca_turnover})_{t-2}$ | 0.529*** (0.182) | 0.0574 (0.220) | 0.0544 (0.120) | 0.196* (0.116) |
| Cash Register | 0.103*** (0.0171) | 0.0152 (0.0206) | 0.0204* (0.0116) | 0.0287** (0.0112) |
| | | | | |
| Constant | -0.0233*** (0.00485) | -0.0136** (0.00561) | -0.00275 (0.00291) | -0.00698** (0.00301) |
| | | | | |
| Observations | 48 | 48 | 48 | 48 |
| R-squared | 0.633 | 0.236 | 0.416 | 0.502 |

| | (1) | (2) | (3) | (4) |
|---|--------------------------------------|--------------------------------------|--------------------------------------|--------------------------------------|
| VARIABLES | $\Delta\log(\text{EL- Women1819})_t$ | $\Delta\log(\text{EL- Women2021})_t$ | $\Delta\log(\text{EL- Women2224})_t$ | $\Delta\log(\text{EL- Women1824})_t$ |
| | | | | |
| $\Delta\log(\text{Employment Level})_{t-1}$ | 0.215 | -0.207 | 0.0726 | 0.354*** |
| | (0.134) | (0.138) | (0.149) | (0.123) |
| $\Delta\log(\text{Horeca_turnover})_t$ | 0.723* | 0.600** | 0.504*** | 0.447*** |
| | (0.368) | (0.288) | (0.158) | (0.141) |
| $\Delta\log(\text{Horeca_turnover})_{t-1}$ | 0.822** | 0.615** | 0.447** | 0.282* |
| | (0.370) | (0.280) | (0.168) | (0.148) |
| $\Delta\log(\text{Horeca_turnover})_{t-2}$ | 0.455 | -0.117 | 0.0615 | 0.164 |
| | (0.349) | (0.270) | (0.157) | (0.134) |
| Cash Register | 0.0988*** | 0.0395 | 0.0105 | 0.0311** |
| | (0.0323) | (0.0254) | (0.0139) | (0.0124) |
| | | | | |
| Constant | -0.0302*** | -0.0168** | -0.00933** | -0.0108*** |
| | (0.00877) | (0.00656) | (0.00371) | (0.00335) |
| | | | | |
| Observations | 48 | 48 | 48 | 48 |
| R-squared | 0.373 | 0.245 | 0.316 | 0.495 |

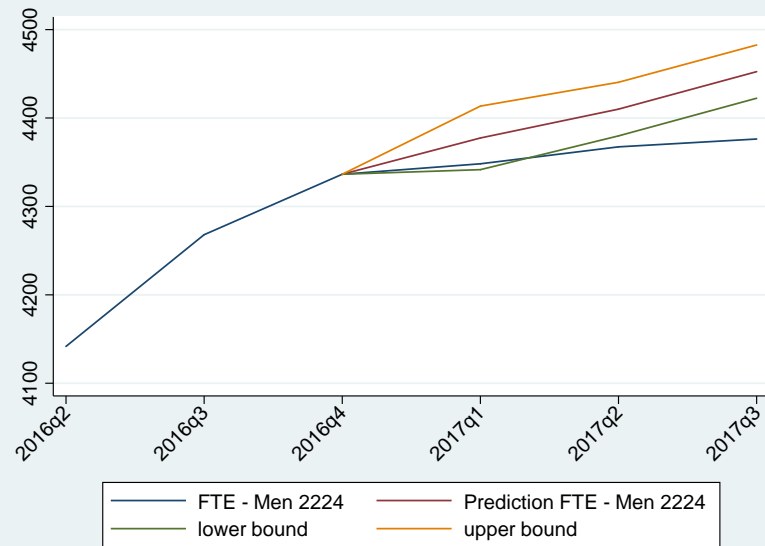
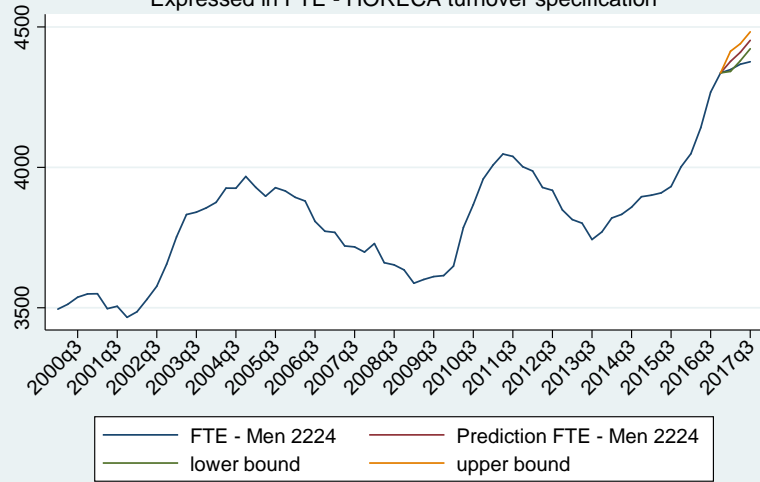
Standard errors in parentheses (***) p<0.01, ** p<0.05, * p<0.1)

Figure 5.6 -The quarterly employment level by gender and age group, 2000q1 - 2017q3, observed series and predicted values (forecasts from 2017q1) - 95% confidence interval of the forecasts



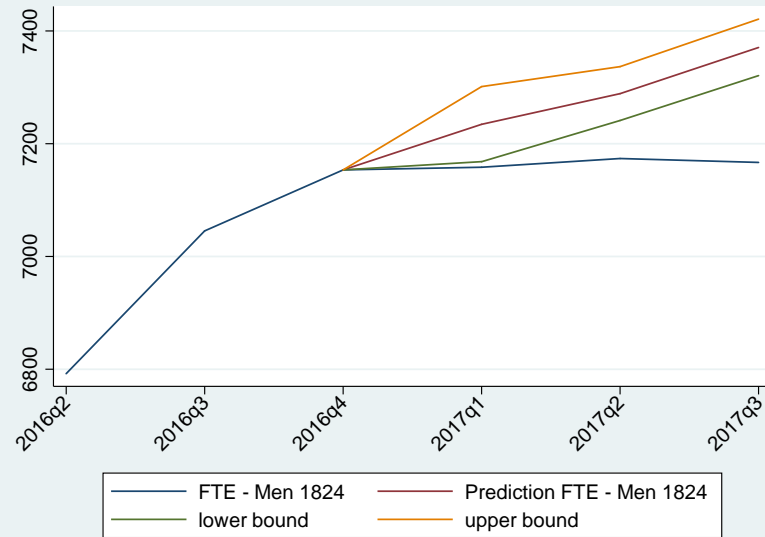
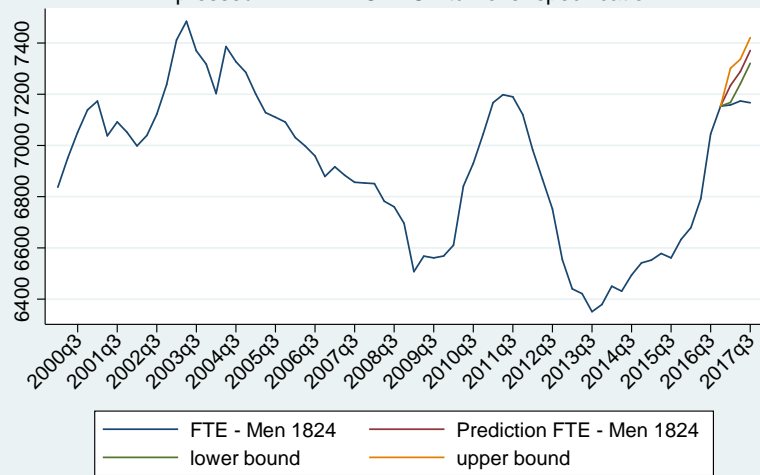
Evolution of the employment level - Men 2224

Expressed in FTE - HORECA turnover specification

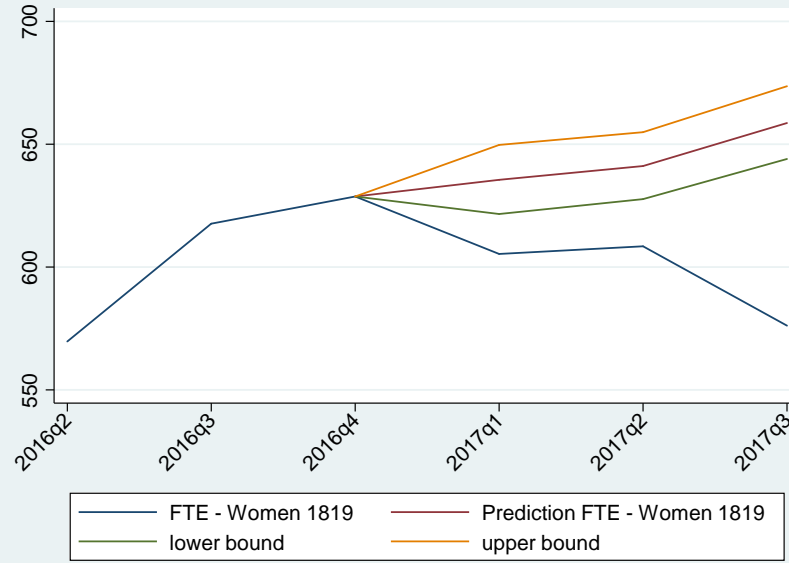
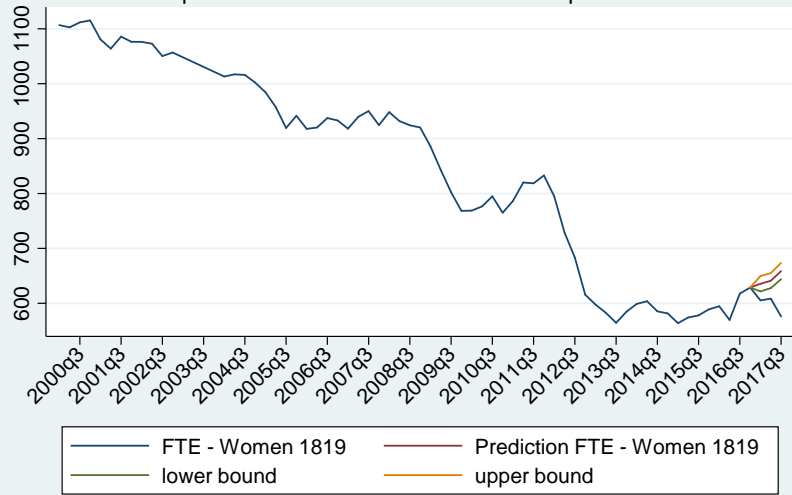


Evolution of the employment level - Men 1824

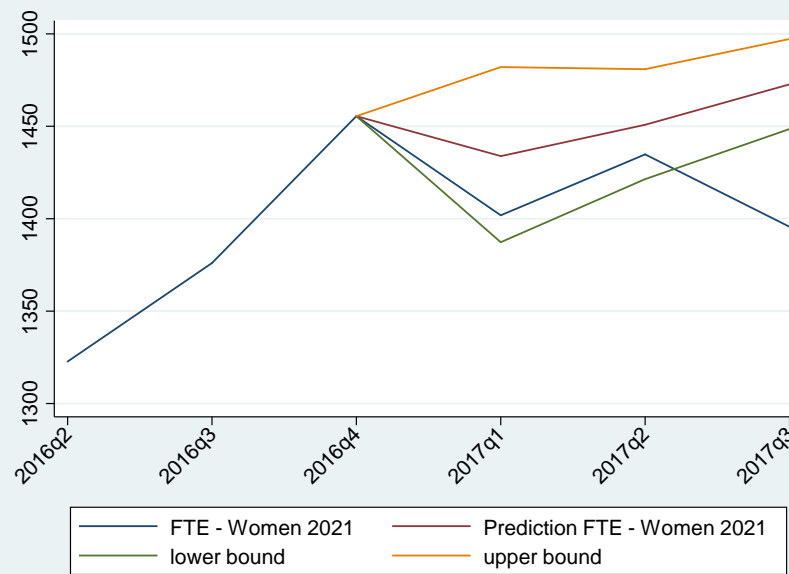
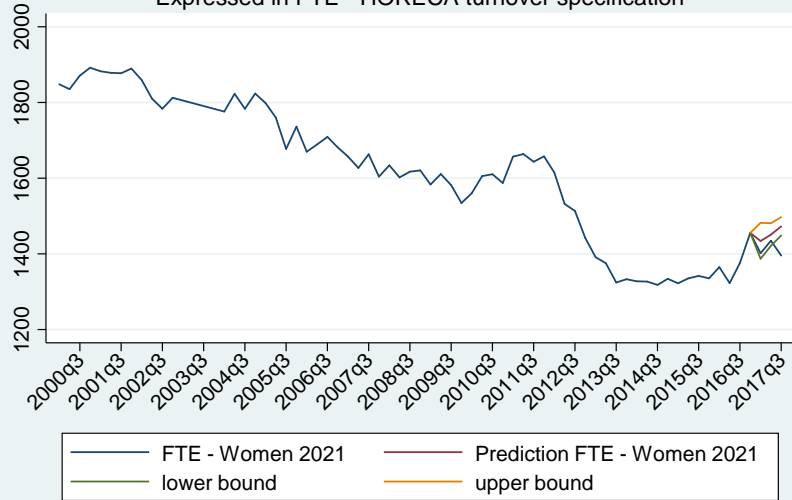
Expressed in FTE - HORECA turnover specification



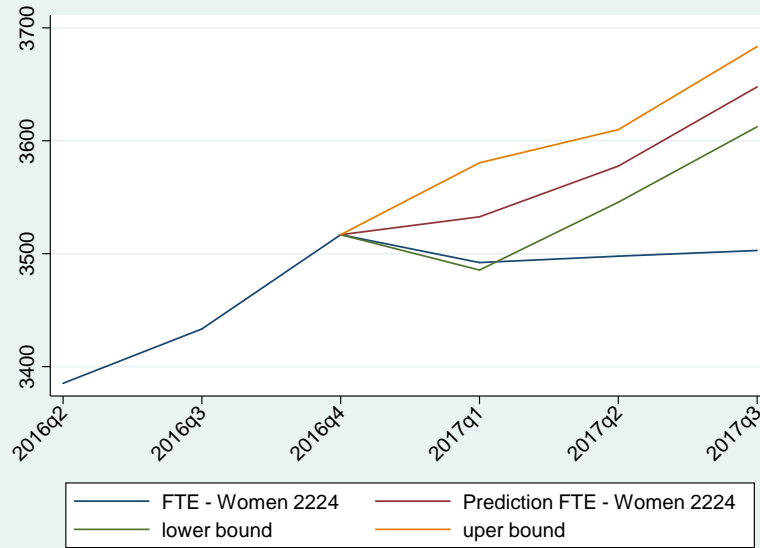
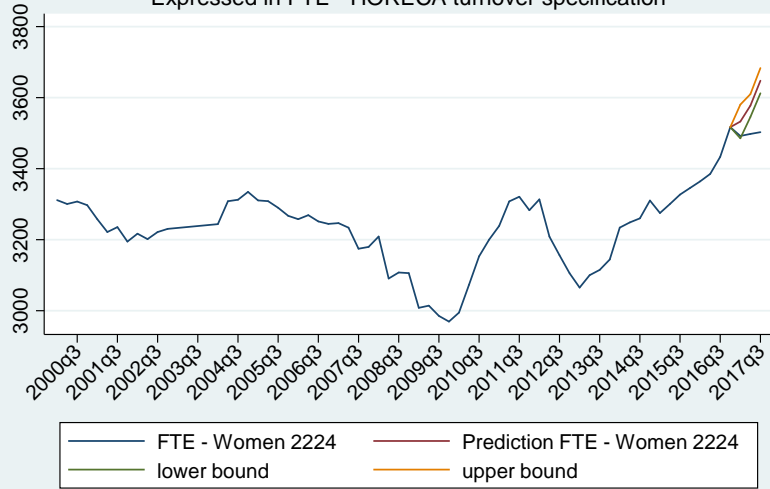
Evolution of the employment level - Women 1819
Expressed in FTE - HORECA turnover specification



Evolution of the employment level - Women 2021
Expressed in FTE - HORECA turnover specification



Evolution of the employment level - Women 2224
Expressed in FTE - HORECA turnover specification



Evolution of the employment level - Women 1824
Expressed in FTE - HORECA turnover specification

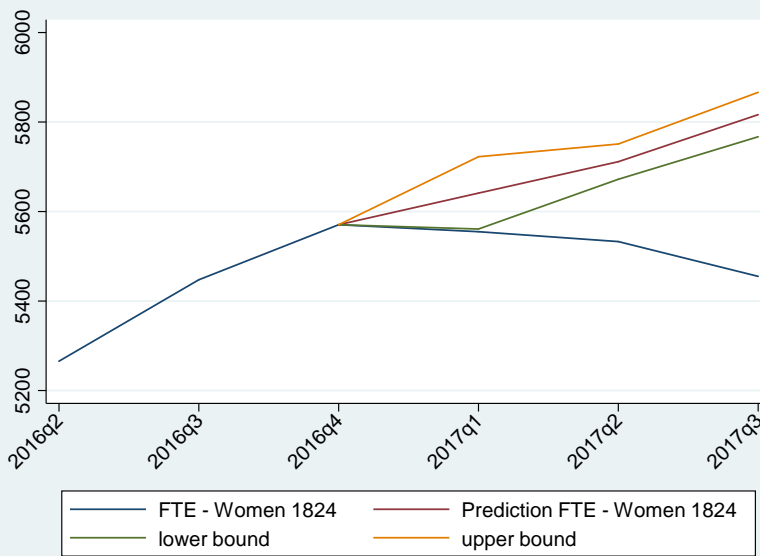
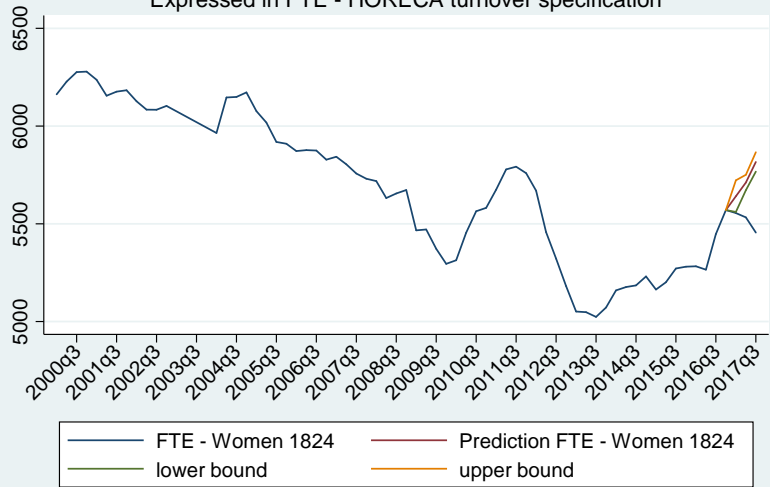


Figure 5.7 - The impact of the reform of the student occupation contract on the quarterly employment level (expressed in FTE) by genders aged 18-19, 20-21, 22-24 and 18-24 in 2017q3

| | Observed value | Predicted value (s.e.) | Impact ^a (in FTE) | Reduction in FTE (in % ^b) |
|----------------|----------------|------------------------|------------------------------|---------------------------------------|
| Men aged 18-19 | 822.22 | 898.50 (0.00796) | -76.28 | -8.49% |
| 95% CI | | {884.19 ; 913.05} | | |
| 90% CI | | {886.56 ; 910.61} | | |
| Men aged 20-21 | 1961.58 | 2007.56 (0.006706) | -45.98 | -2,29% |
| 95% CI | | {1980.57 ; 2034.91} | | |
| 90% CI | | {1985.04 ; 2030.33} | | |
| Men aged 22-24 | 4376.3 | 4452.43 (0.003349) | -76.13 | -1.71% |
| 95% CI | | {4422.45 ; 4482.62} | | |
| 90% CI | | {4427.43 ; 4477.58} | | |
| Men - total | 7166.88 | 7370.69 (0.0033674) | -203.81 | -2,77% |
| 95% CI | | {7320.77 ; 7420.95} | | |
| 90% CI | | {7329.06 ; 7412.56} | | |

| | Observed | Predicted value (s.e.) | Impact ^a (in FTE) | Reduction in FTE (in % ^b) |
|------------------|----------------|------------------------|------------------------------|---------------------------------------|
| Women aged 18-19 | 576.14 | 658.64 (0.011136) | -82.5 | -12.53% |
| 95% CI | | {643.99 ; 673.61} | | |
| 90% CI | | {646.41 ; 671.09} | | |
| Women aged 20-21 | 1395.64 | 1472.68 (0.0081895) | -77.04 | -5.23% |
| 95% CI | | {1448.54 ; 1497.23} | | |
| 90% CI | | {1452.54 ; 1493.11} | | |
| Women aged 22-24 | 3502.86 | 3647.74 (0.0048275) | -144.88 | -3.97% |
| 95% CI | | {3612.37 ; 3683.45} | | |
| 90% CI | | {3618.243 ; 3677.48} | | |
| Women - total | 5455.18 | 5816.47 (0.0042279) | -361.29 | -6.21% |
| 95% CI | | {5767.06 ; 5866.32} | | |
| 90% CI | | {5775.26 ; 5857.99} | | |

^a The impact is measured as the difference in the number of full-time equivalent between the observed and the predicted value

^b Percentage loss in terms of the predicted value: $\frac{\text{Impact (in FTE)}}{\text{Predicted value}}$

Figure 5.8 - Observed and predicted values of the employment level (expressed in FTE) by genders aged 18-19, 20-21, 22-24 and 18-24 in 2017q1, 2017q2 and 2017q3 and the 95% confidence interval – Alternative specification

| | | Observed values | Predicted values | Confidence interval - 95% |
|-----------|--------|-----------------|------------------|---------------------------|
| | 2017q1 | 855.56 | 883.73 | {872.96 ; 894.64} |
| Men 18-19 | 2017q2 | 836.45 | 884.60 | {873.79 ; 895.54} |
| | 2017q3 | 822.22 | 898.50 | {884.19 ; 913.05} |
| | 2017q1 | 1930.29 | 1946.43 | {1907.05 ; 1986.61} |
| Men 20-21 | 2017q2 | 1967.31 | 1972.76 | {1945.90 ; 1999.99} |
| | 2017q3 | 1961.58 | 2007.56 | {1980.57 ; 2034.91} |
| | 2017q1 | 4348.24 | 4377.41 | {4341.62 ; 4413.49} |
| Men 22-24 | 2017q2 | 4367.38 | 4410.03 | {4379.84 ; 4440.42} |
| | 2017q3 | 4376.30 | 4452.43 | {4422.45 ; 4482.62} |
| | 2017q1 | 7158.28 | 7234.41 | {7168.14 ; 7301.30} |
| Men 18-24 | 2017q2 | 7173.76 | 7288.78 | {7241.14 ; 7336.73} |
| | 2017q3 | 7166.88 | 7370.69 | {7320.77 ; 7420.95} |

* Cells in bold point out to values lying outside the confidence interval

| | | Observed values | Predicted values | Confidence interval - 95% |
|-------------|--------|-----------------|------------------|---------------------------|
| | 2017q1 | 605.33 | 635.50 | {621.59 ; 649.73} |
| Women 18-19 | 2017q2 | 608.46 | 641.14 | {627.65 ; 654.91} |
| | 2017q3 | 576.14 | 658.64 | {643.99 ; 673.61} |
| | 2017q1 | 1401.85 | 1433.88 | {1387.29 ; 1482.04} |
| Women 20-21 | 2017q2 | 1434.80 | 1450.85 | {1421.42 ; 1480.90} |
| | 2017q3 | 1395.64 | 1472.68 | {1448.54 ; 1497.23} |
| | 2017q1 | 3492.15 | 3532.69 | {3485.52 ; 3580.50} |
| Women 22-24 | 2017q2 | 3497.80 | 3577.60 | {3545.60 ; 3609.89} |
| | 2017q3 | 3502.86 | 3647.74 | {3612.37 ; 3683.45} |
| | 2017q1 | 5554.98 | 5641.15 | {5560.97 ; 5722.48} |
| Women 18-24 | 2017q2 | 5532.91 | 5711.33 | {5672.02 ; 5750.90} |
| | 2017q3 | 5455.18 | 5816.47 | {5767.06 ; 5866.32} |

* Cells in bold point out to values lying outside the confidence interval