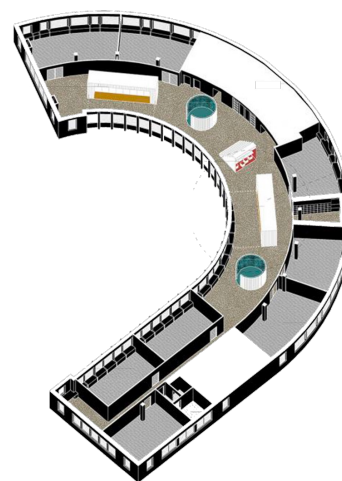


Singelijn Second'air

EON architects

2017, Schaarbeek, Belgique

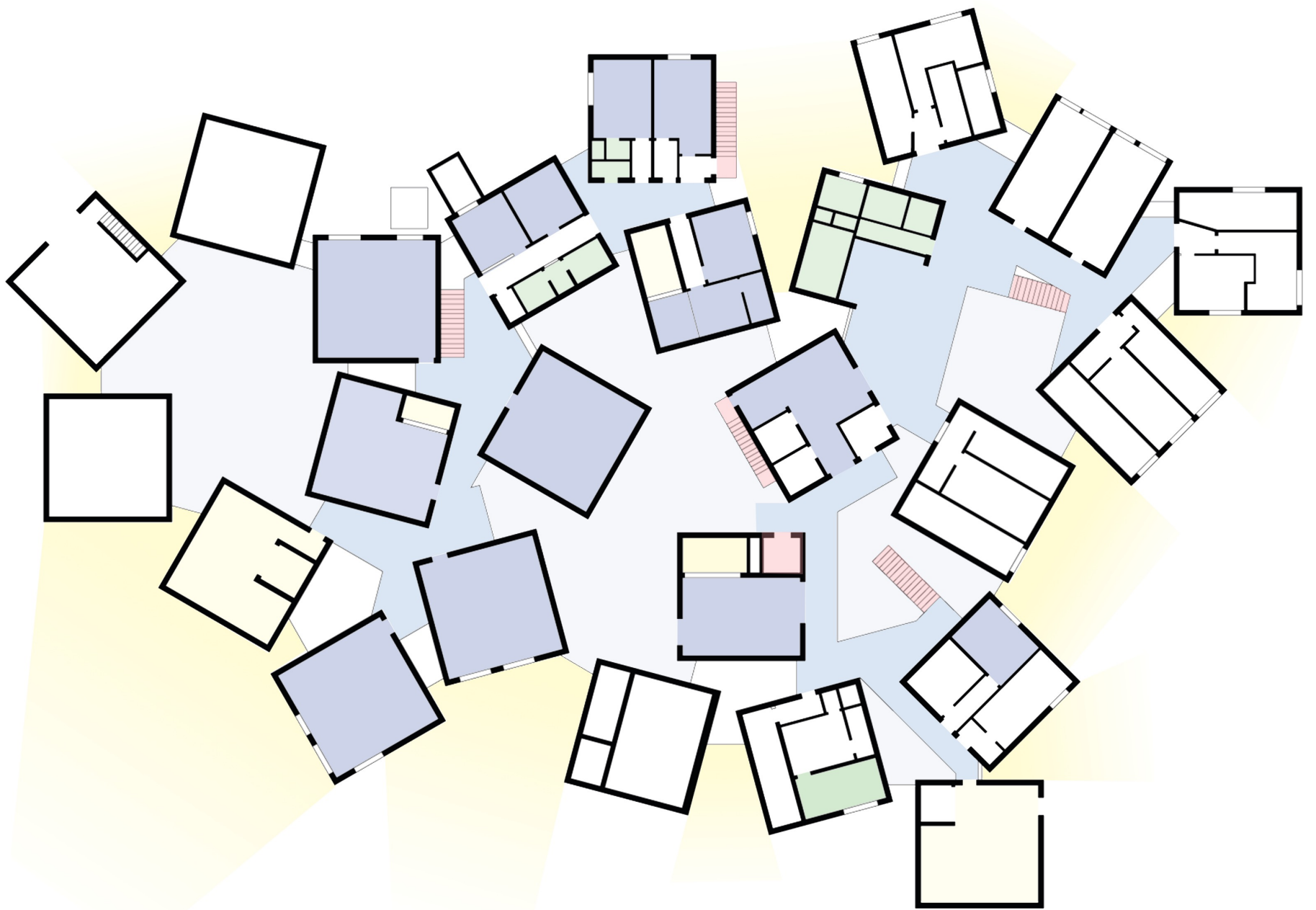


Implantation	✓
Limites	✓
Modularité	✓
Harmonie	~
Eclairage	+ -
Continuité	✓
Distribution	✓
Patio	✓



CABANES Typologies, formes et matériaux			
ESPACES DYNAMIQUES	ESPACES DE RENCONTRE	ESPACES CALMES	ADMINISTRATION

Plan
Coupe
Acronométrie
Matériaux



○ 2006, Hokkaido, Japon

Centre de réadaptation psychiatrique d'enfants

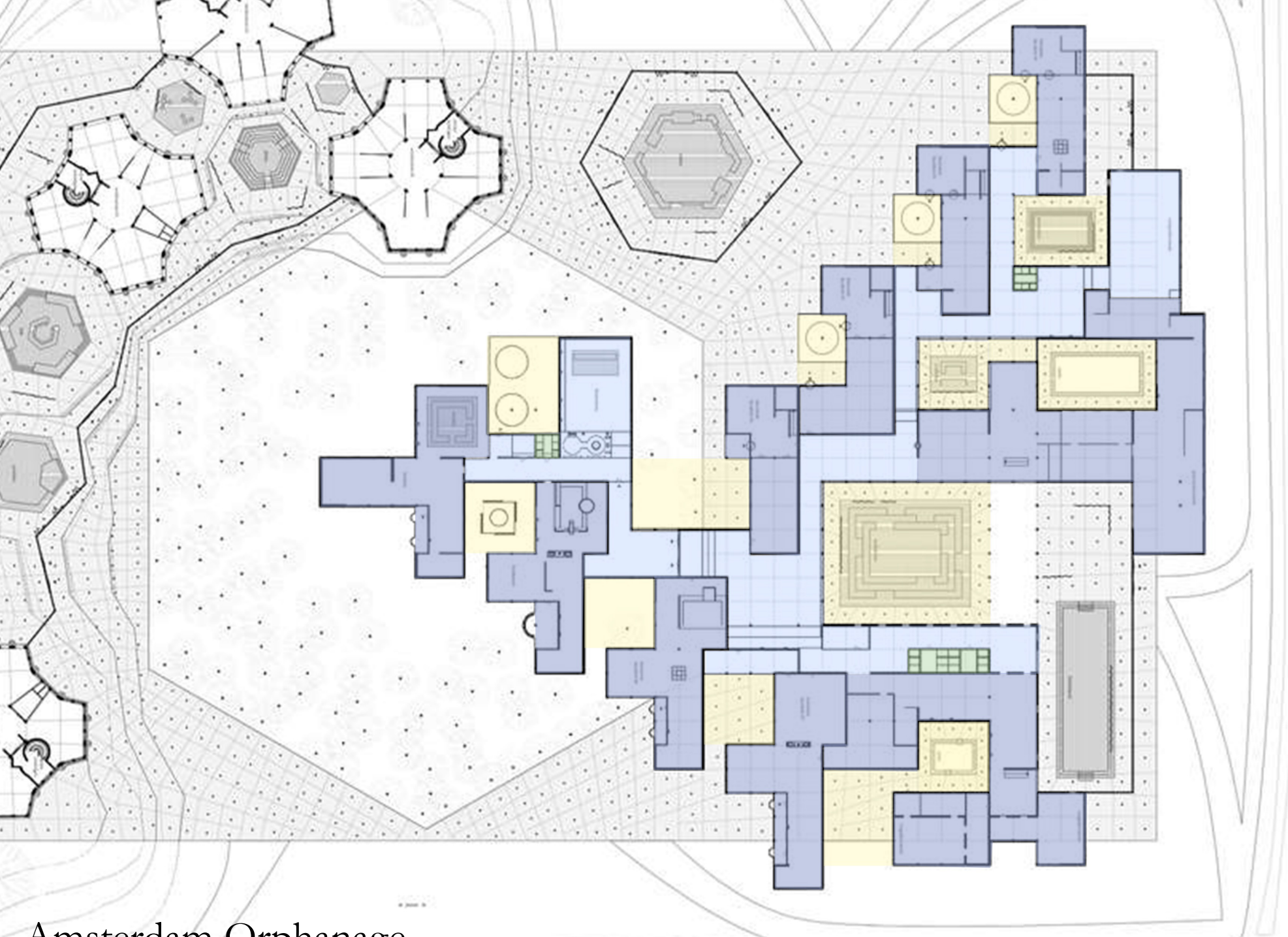
Sou Fujimoto

2006, Hokkaido, Japon



Implantation	X
Limites	✓
Modularité	✓
Harmonie	✓
Eclairage	✓
Continuité	✓
Distribution	✓
Patio	+ -





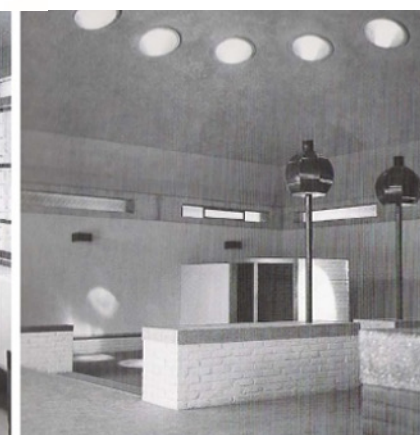
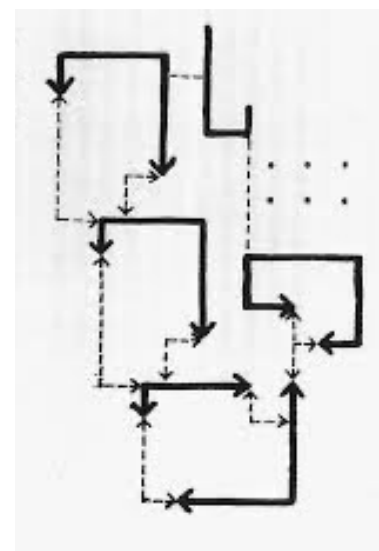
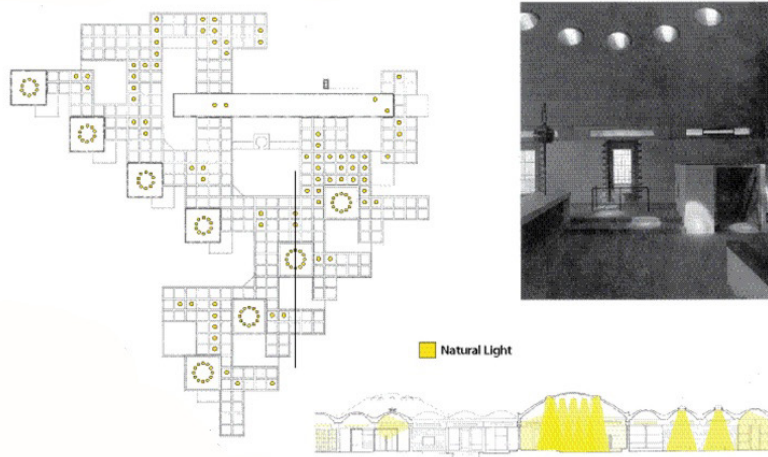
Amsterdam Orphanage

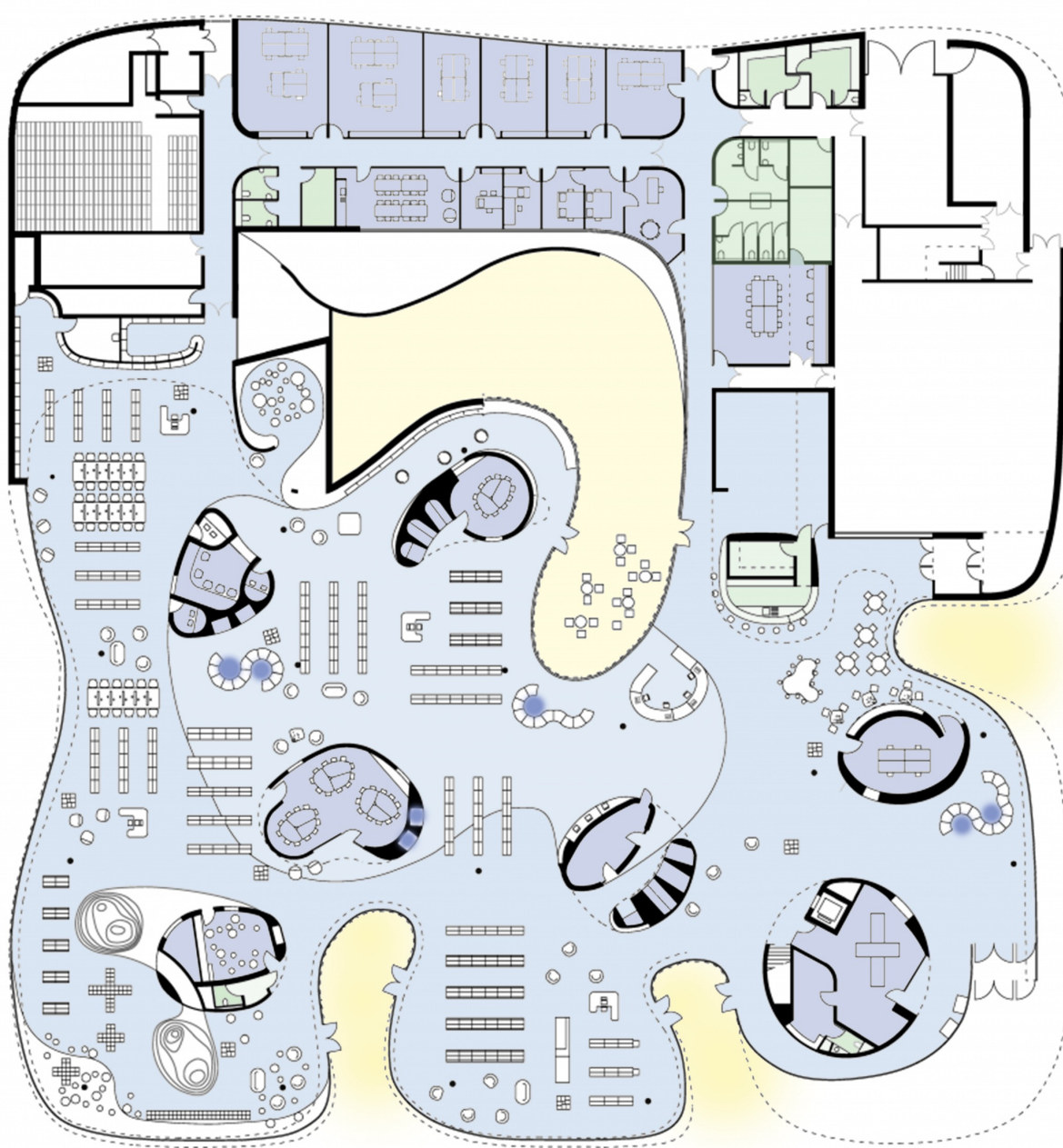
Aldo Van Eyck

1960, Pays-Bas



Implantation	X
Limites	✓
Modularité	X
Harmonie	✓
Eclairage	✓
Continuité	✓
Distribution	✓
Patio	✓

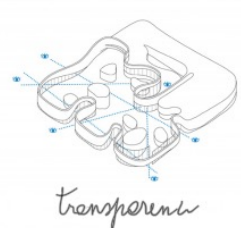




Médiathèque 3emeLieu

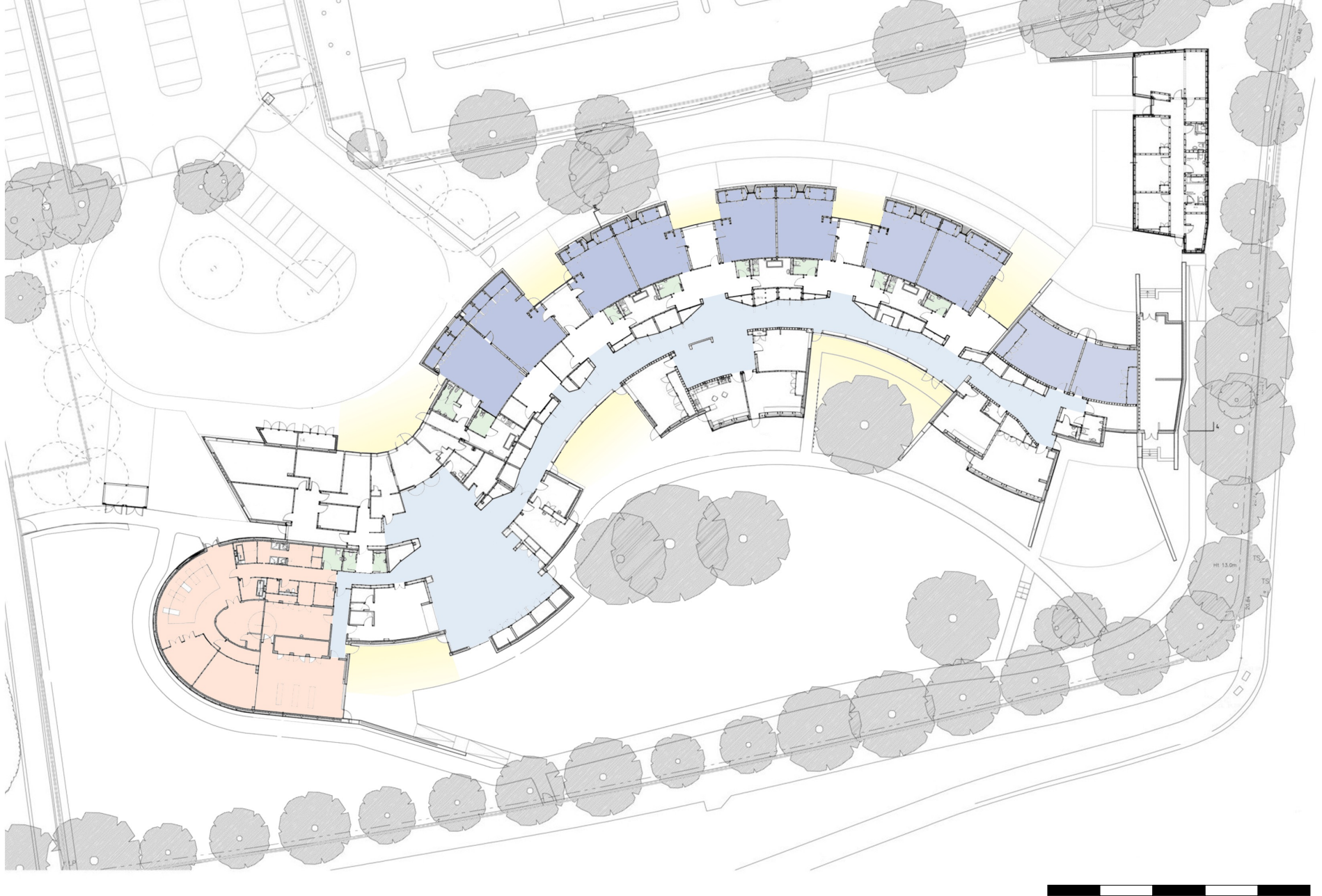
Dominique Coulon

2016, Thionville, France



Implantation	✓
Limites	✓
Modularité	✓
Harmonie	✓
Eclairage	✓
Continuité	✓
Distribution	✓
Patio	✓



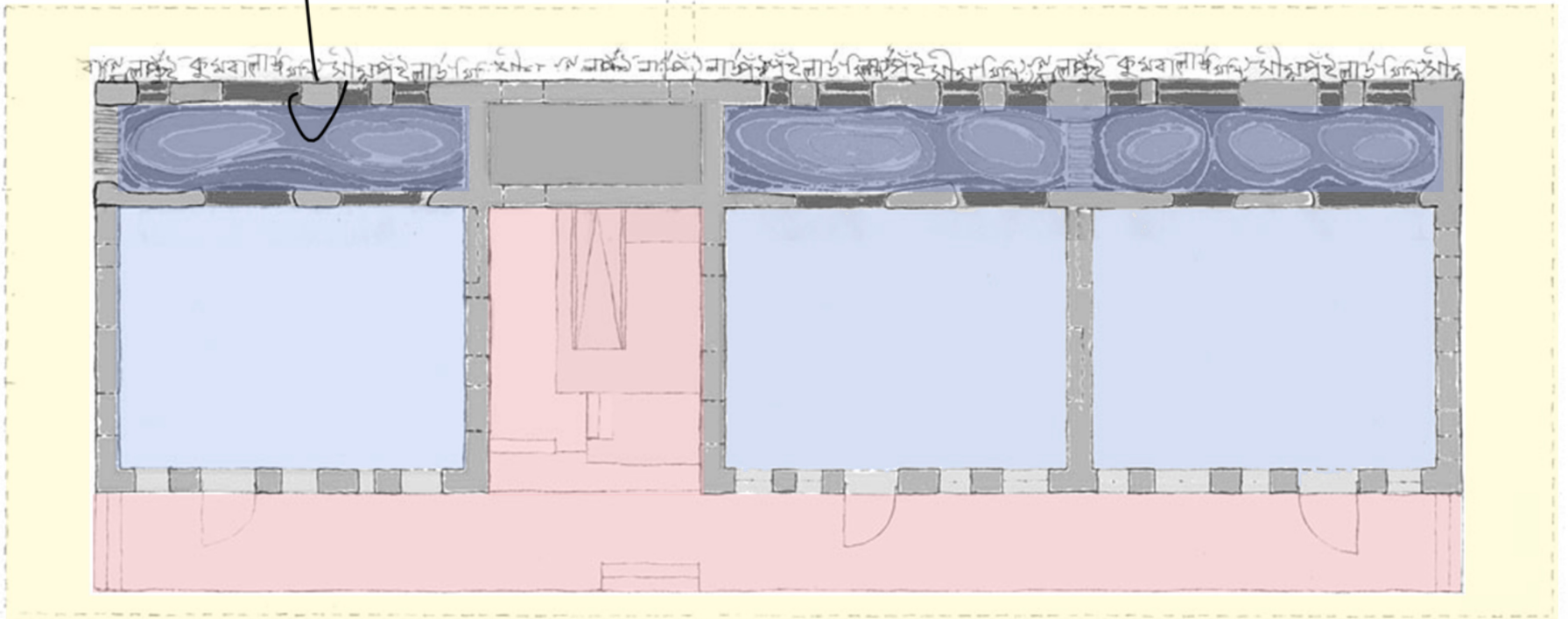


Hazelwood School
 Alan Dunlop Architect
 2016, Glasgow, Royaume-Uni

Implantation	
Limites	
Modularité	
Harmonie	
Eclairage	
Continuité	
Distribution	
Patio	

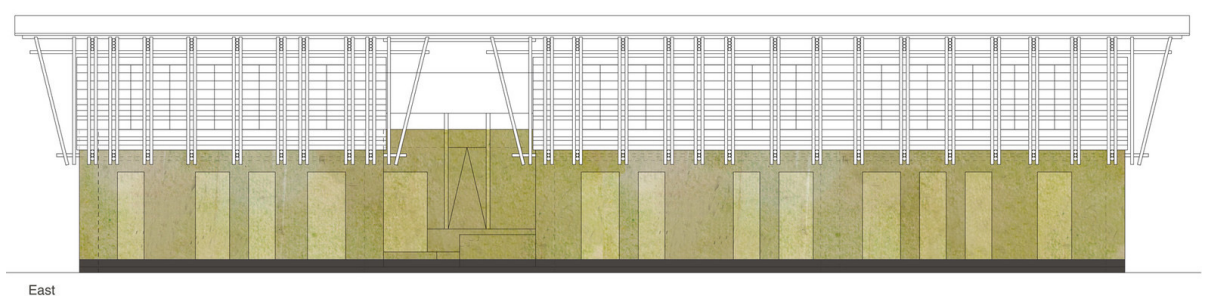


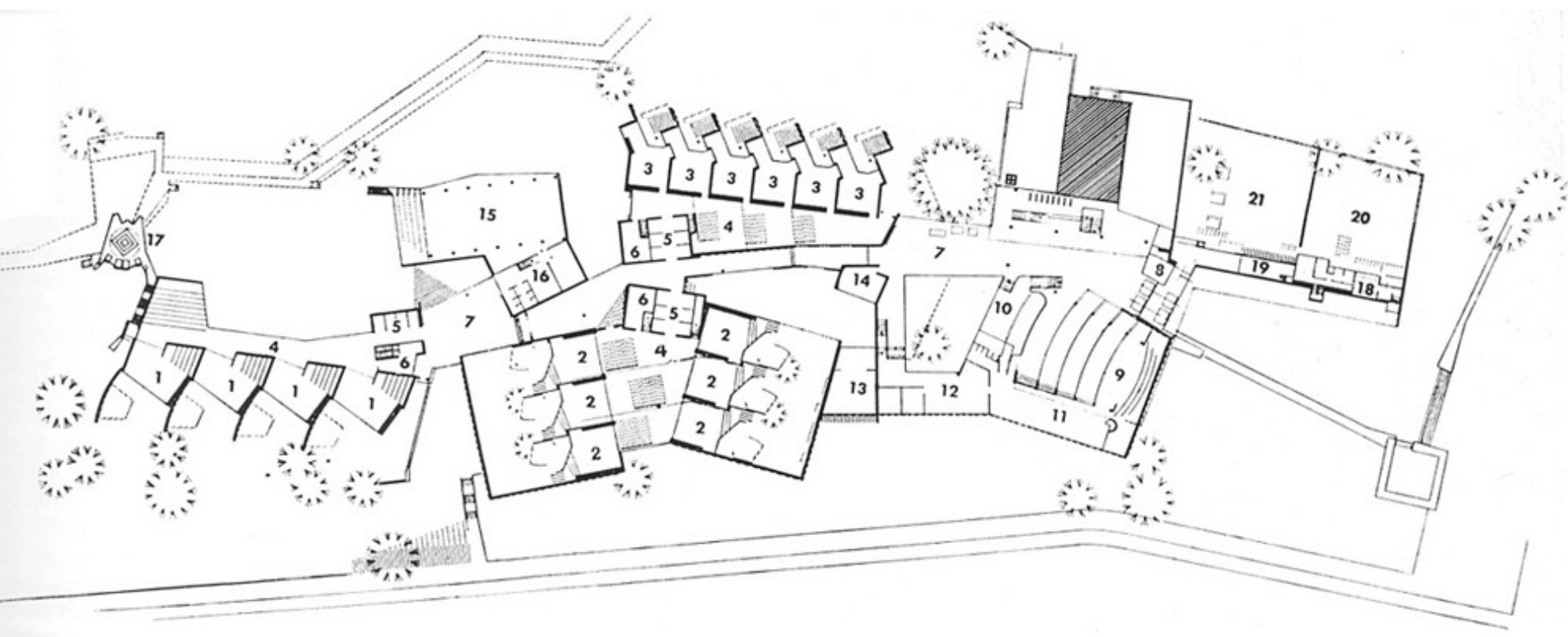
mitte
d' "intimité"



Handmade School
Anna Heringer & Eike Roswag
 2007, Dinajpur, Bangladesh

Implantation	X
Limites	✓
Modularité	X
Harmonie	X
Eclairage	✓
Continuité	X
Distribution	X
Patio	✓





Darmstadt School

Hans Scharoun

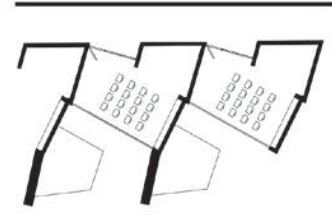
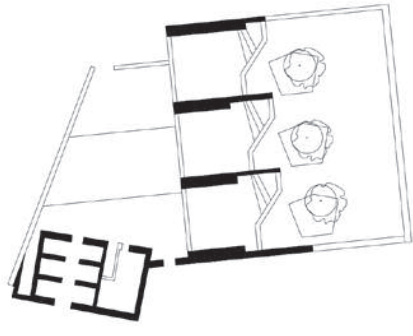
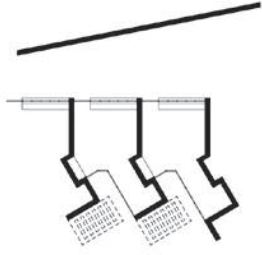
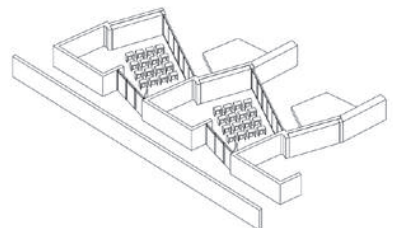
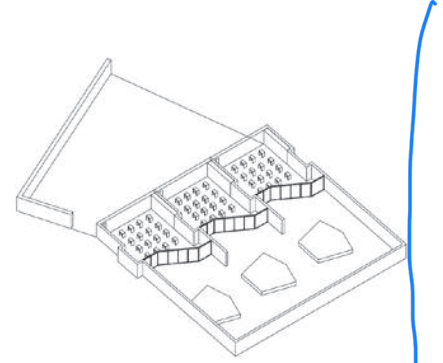
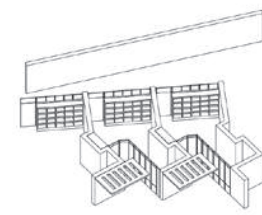
1951, Allemagne

1

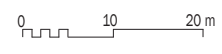
2

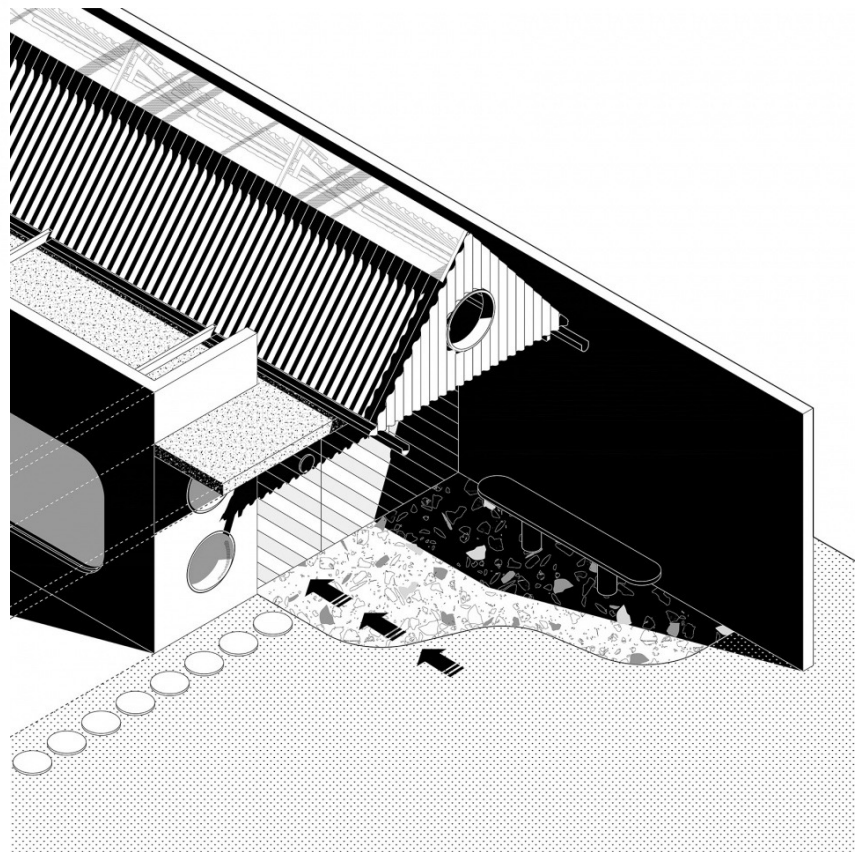
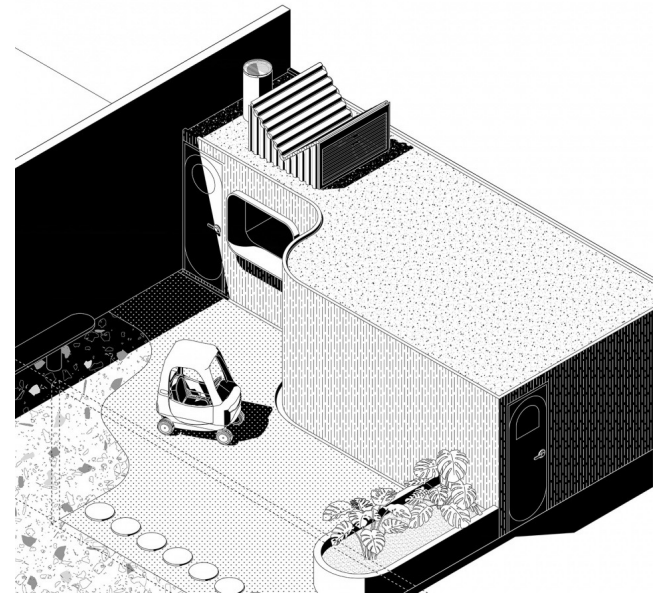
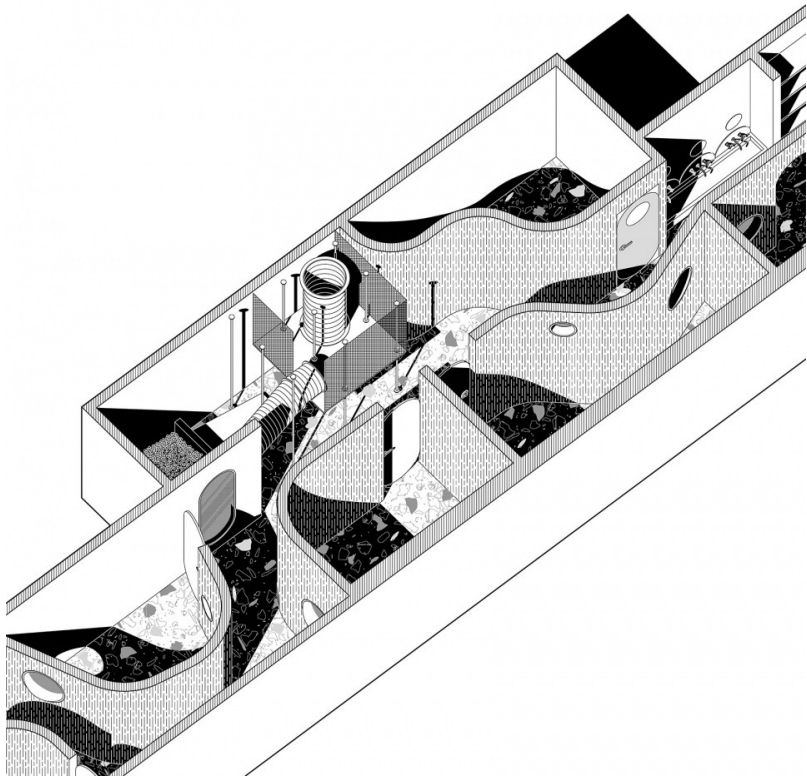
3

Implantation	✓
Limites	✓
Modularité	✓
Harmonie	?
Eclairage	✓
Continuité	✓
Distribution	✓
Patio	✓



3

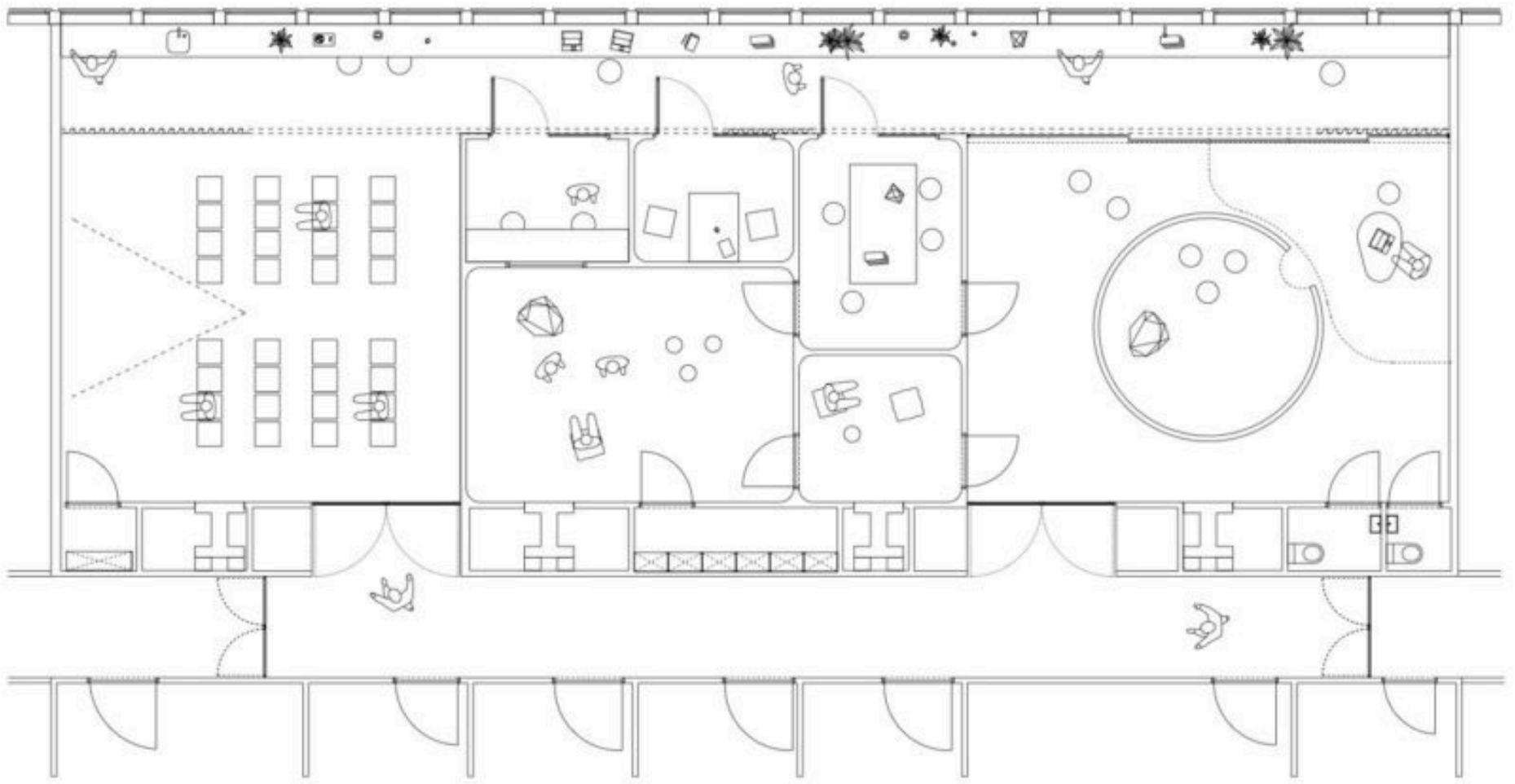




Centre Fun Maze
 Caracas Studio
 2020, Caracas, Venezuela

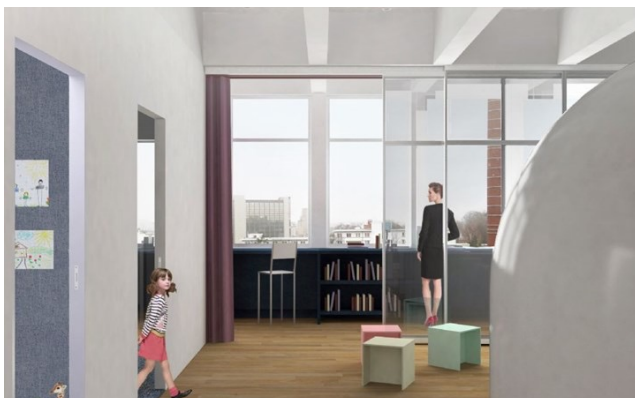
Implantation	✓ mais d'ins out
Limites	✓
Modularité	✓
Harmonie	✓
Eclairage	✓
Continuité	✓
Distribution	✓
Patio	✓

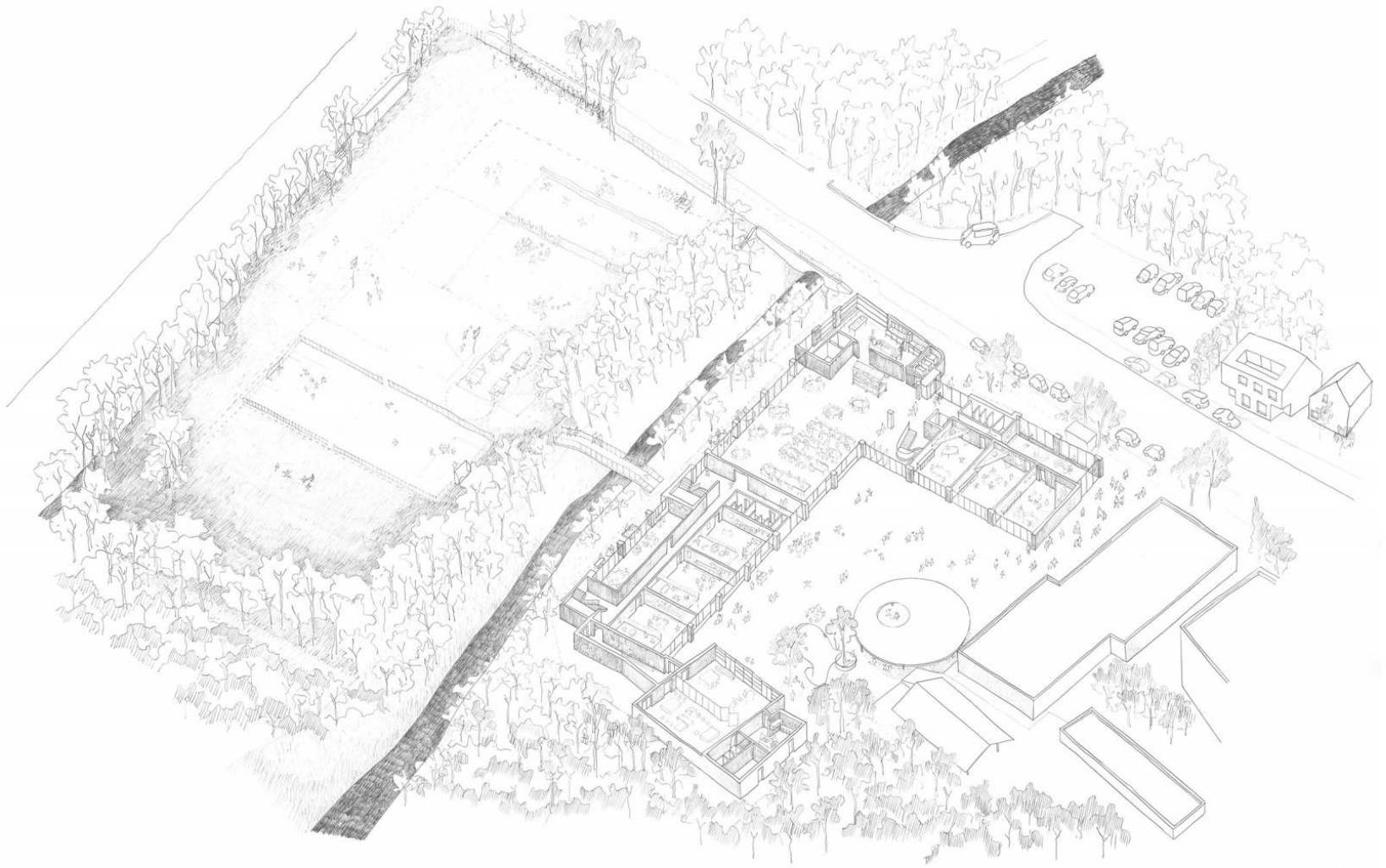




ACTE
V+ & central
 2017, Bruxelles, Belgique

Implantation	✓
Limites	✓
Modularité	✗
Harmonie	✓
Eclairage	BDF
Continuité	+ -
Distribution	✗
Patio	✗





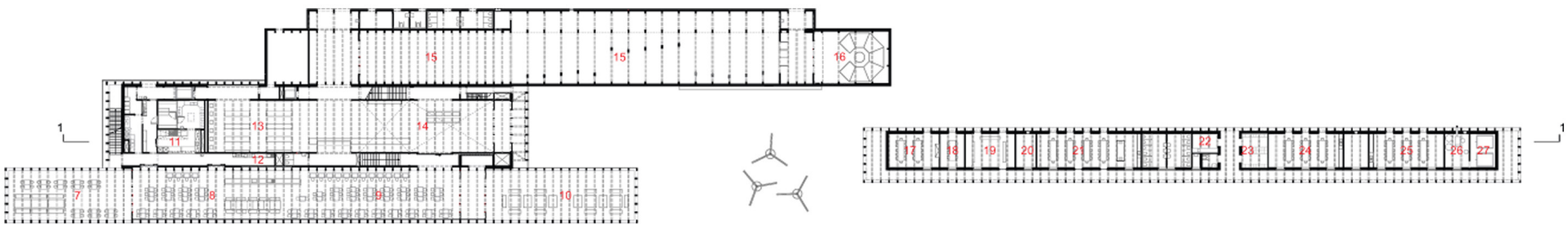
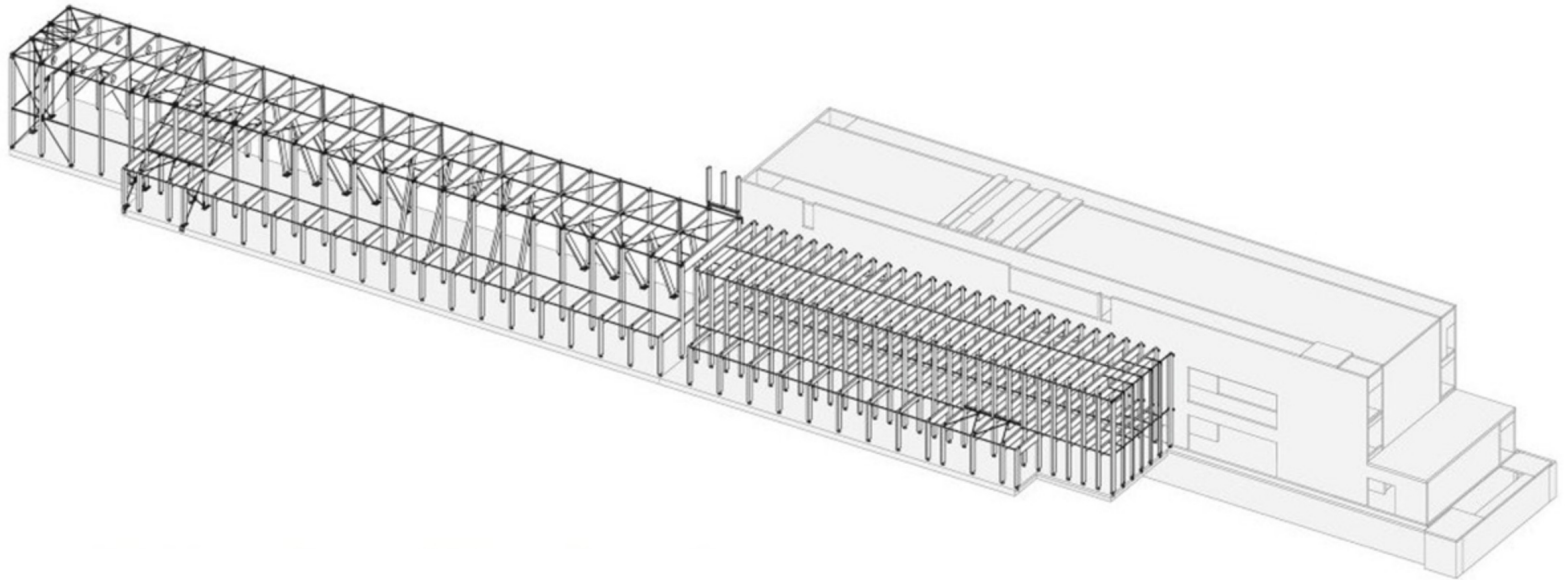
Singelijn

V+

2019, Bruxelles, Belgique

Implantation	
Limites	
Modularité	
Harmonie	
Eclairage	
Continuité	
Distribution	
Patio	





Plan level 0

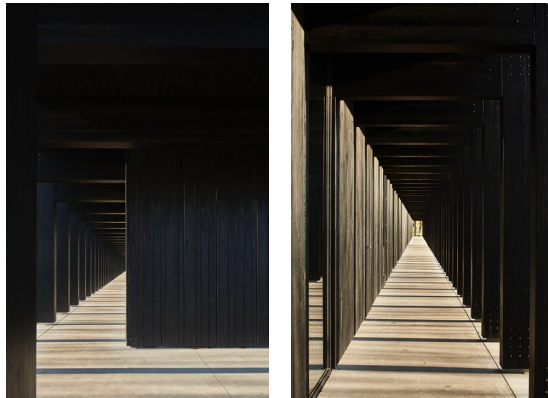
7.outdoor restaurant 8.restaurant 9.cafeteria 10.pick-nick zone 11.kichen 12.tearoom kitchen 13.bookshop 14.entrance hall 15.exhibition 16.auditorio anatomico 17.storage 18.guides 19.reading class 20.service room
21.kitchen class 22.first aid room 23.locker room 24.labo class 25.carpentry class 26.boiler room 27.pellet storage

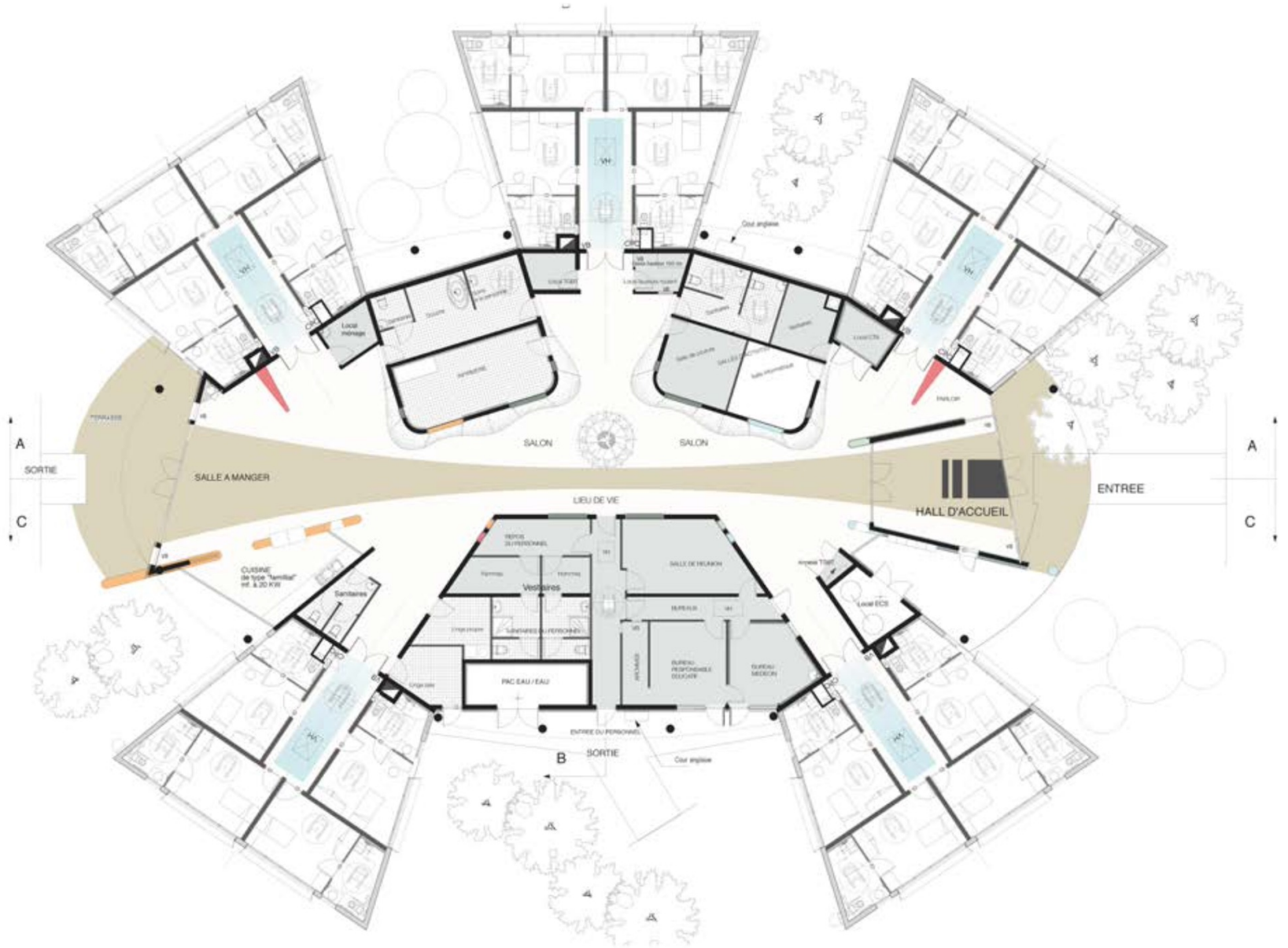
Zwin Natuur Center

Coussée & Goris

2020, Caracas, Venezuela

Implantation	
Limites	
Modularité	
Harmonie	
Eclairage	
Continuité	
Distribution	
Patio	

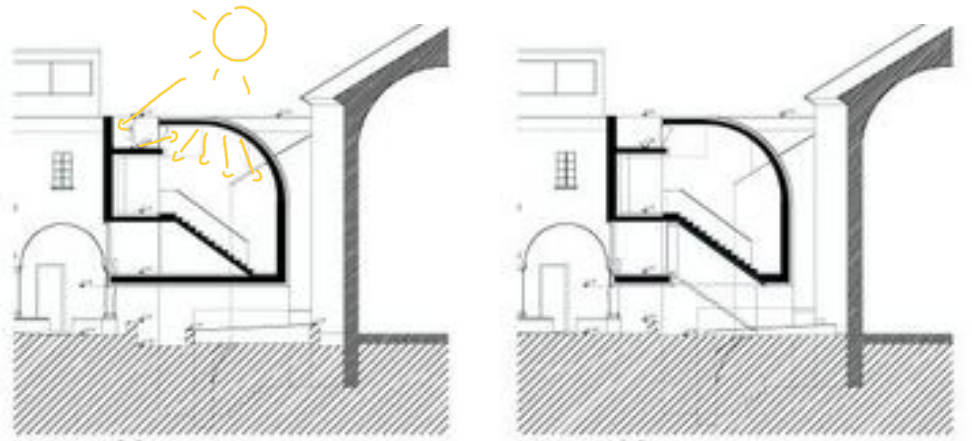
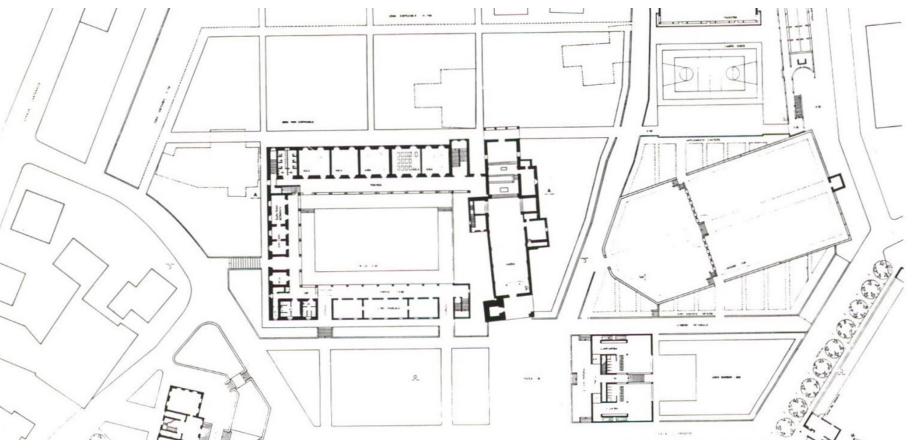




L'éveil du scarabée
Emmanuel Negrone
2015, France

Implantation	X
Limites	✓
Modularité	✓
Harmonie	✓
Eclairage	✓
Continuité	✓
Distribution	✓
Patio	✓



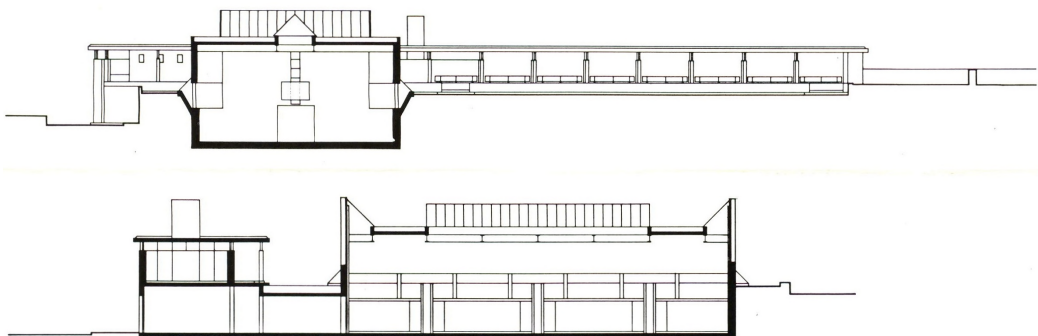
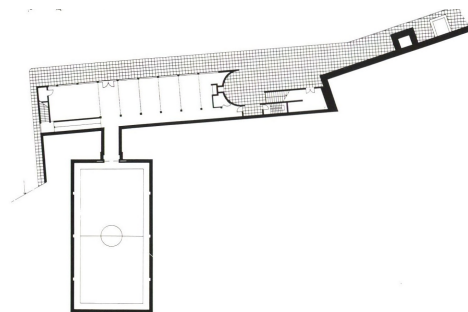


Monte Carasso

Luigi Snozzi

1984, Tessin, Suisse

Implantation	
Limites	
Modularité	
Harmonie	
Eclairage	
Continuité	
Distribution	
Patio	





GoodLife Fitness Family Autism Hub

NSDA Architects

2016, Vancouver, Canada

Implantation	?
Limites	✓
Modularité	✓
Harmonie	✓
Eclairage	✓
Continuité	✓
Distribution	✓
Patio	✗

