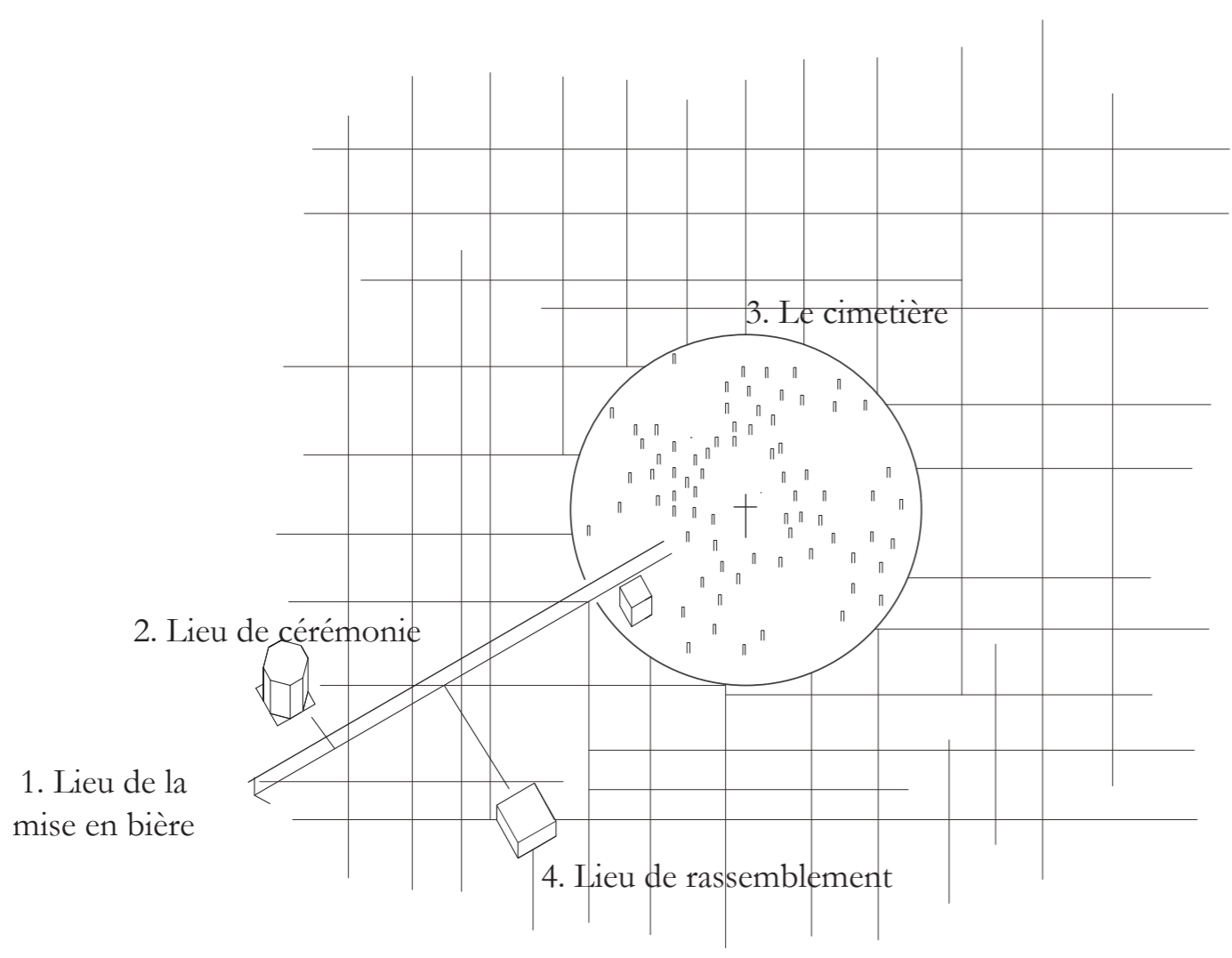


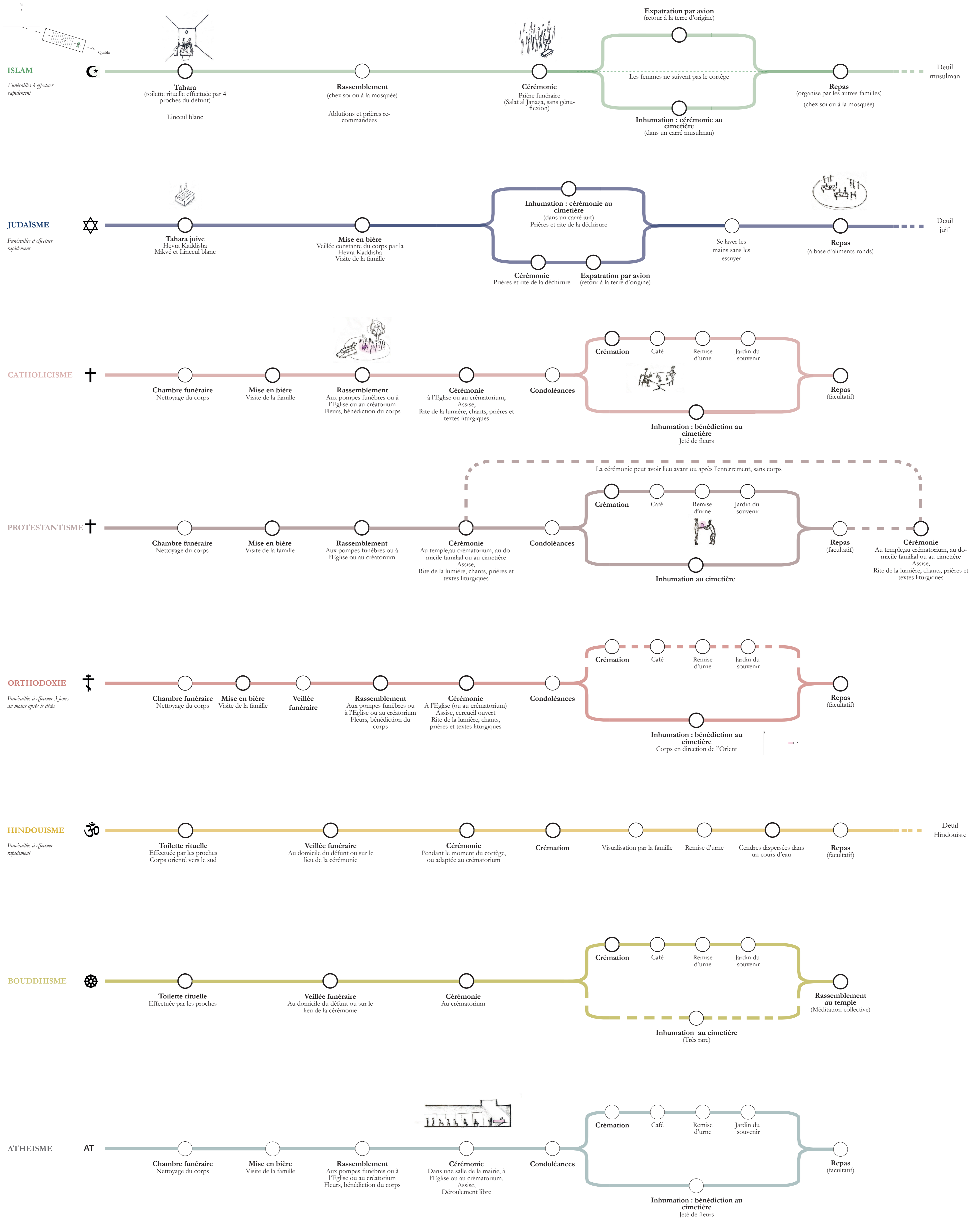
- Expatriation
- Inhumation
- Incinération



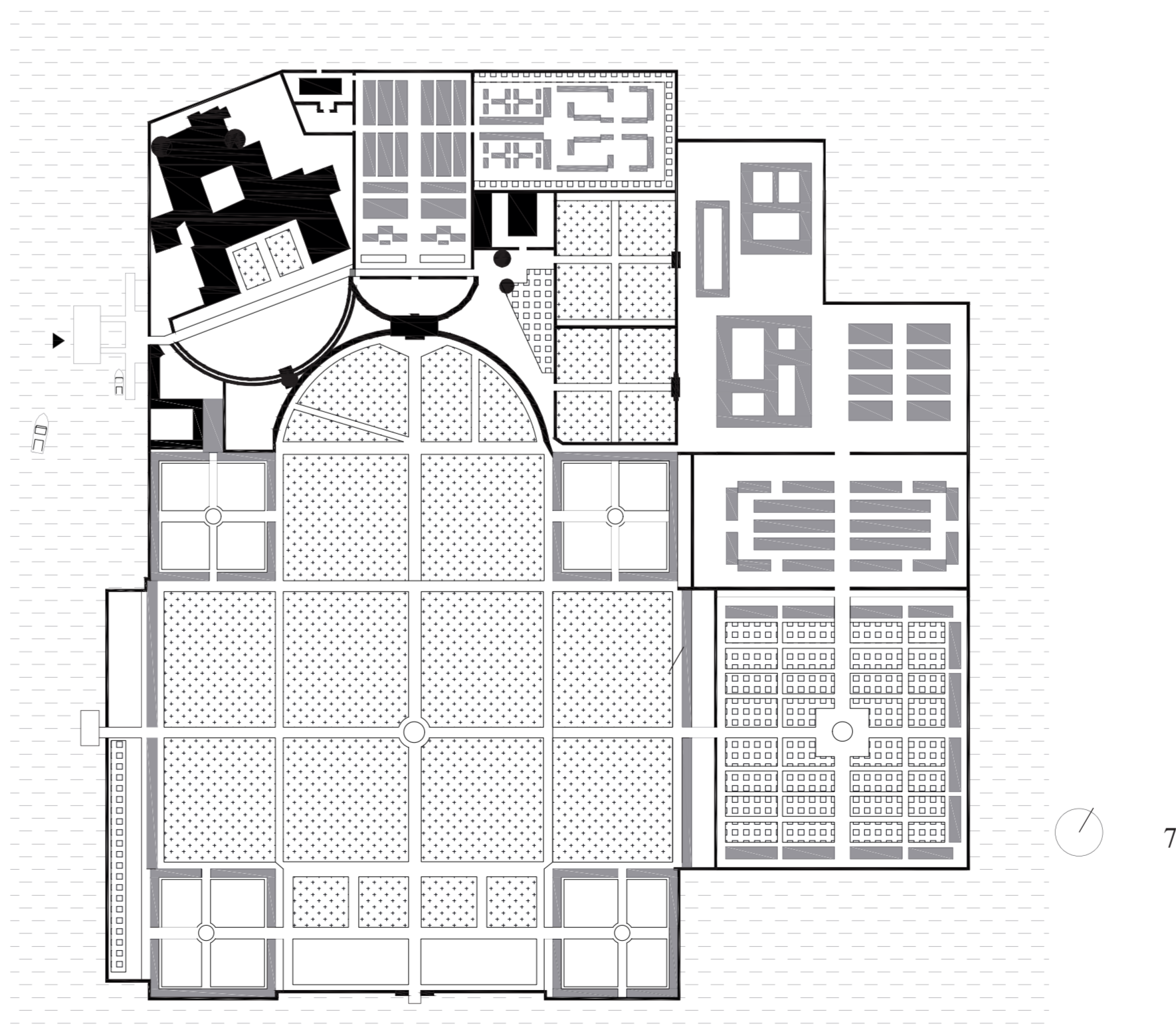
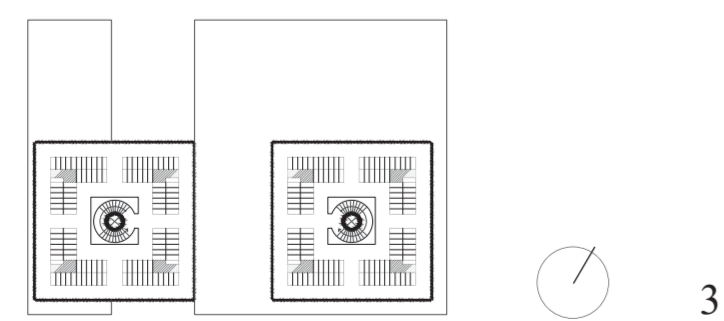
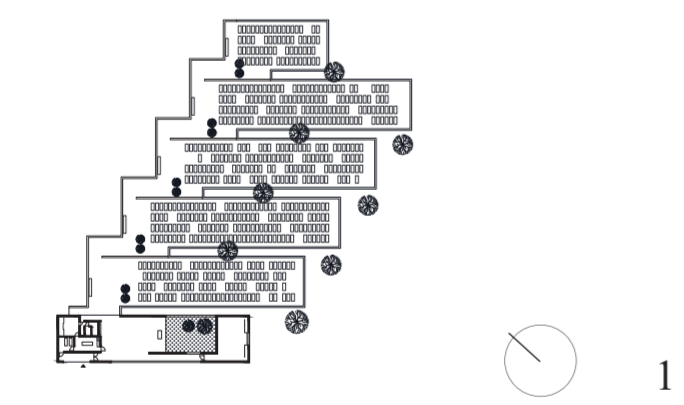
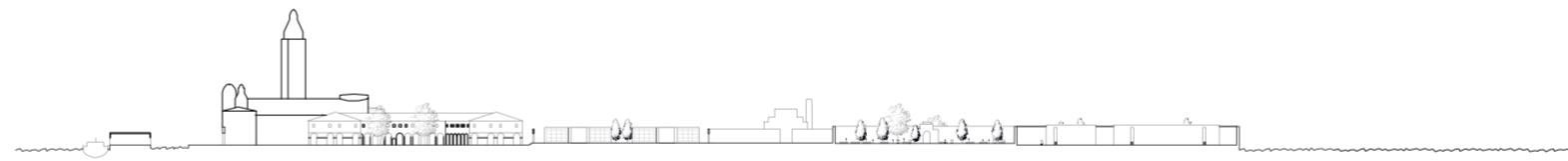
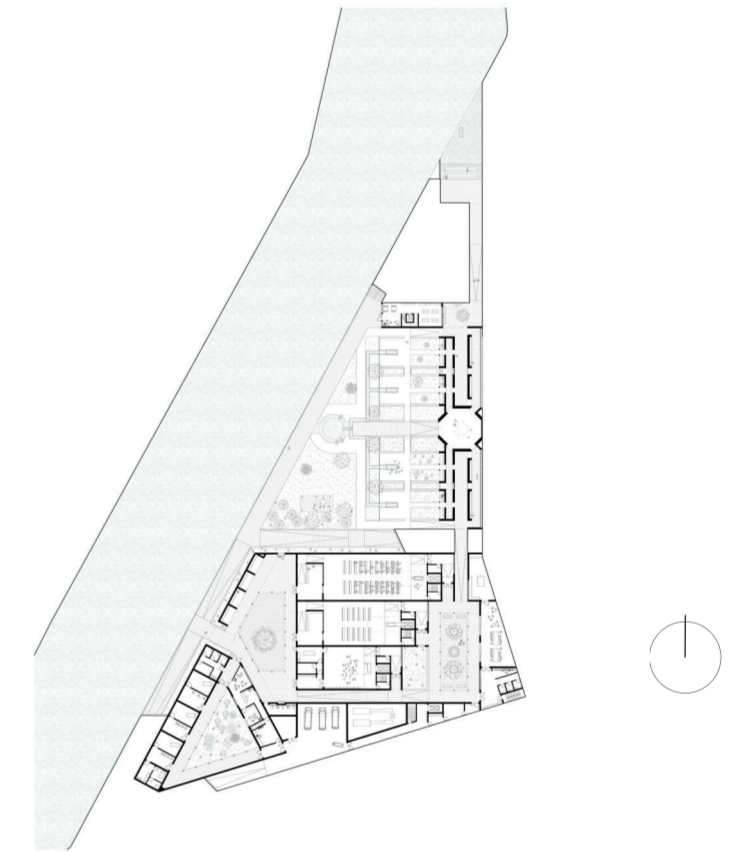
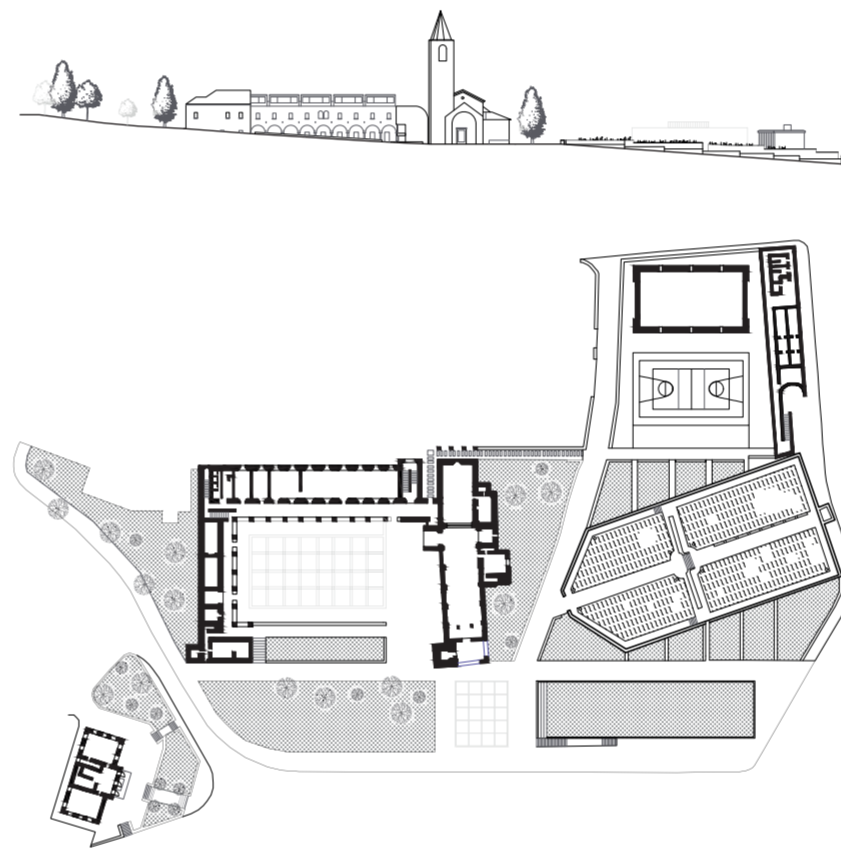
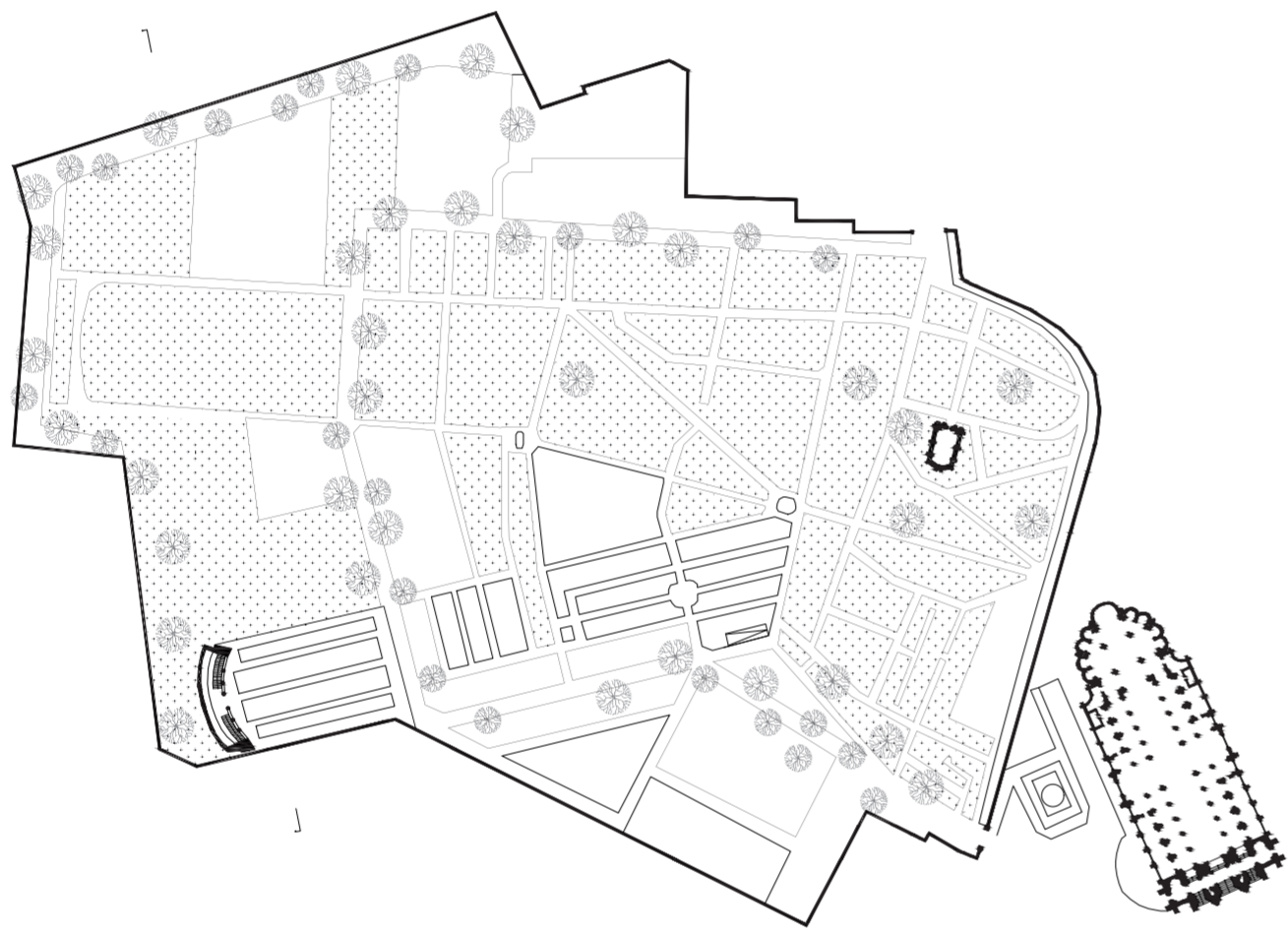
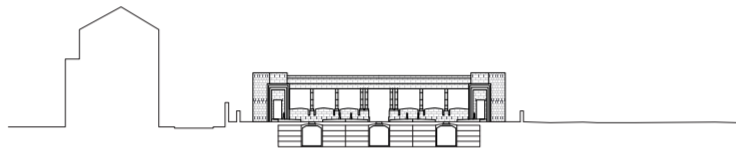
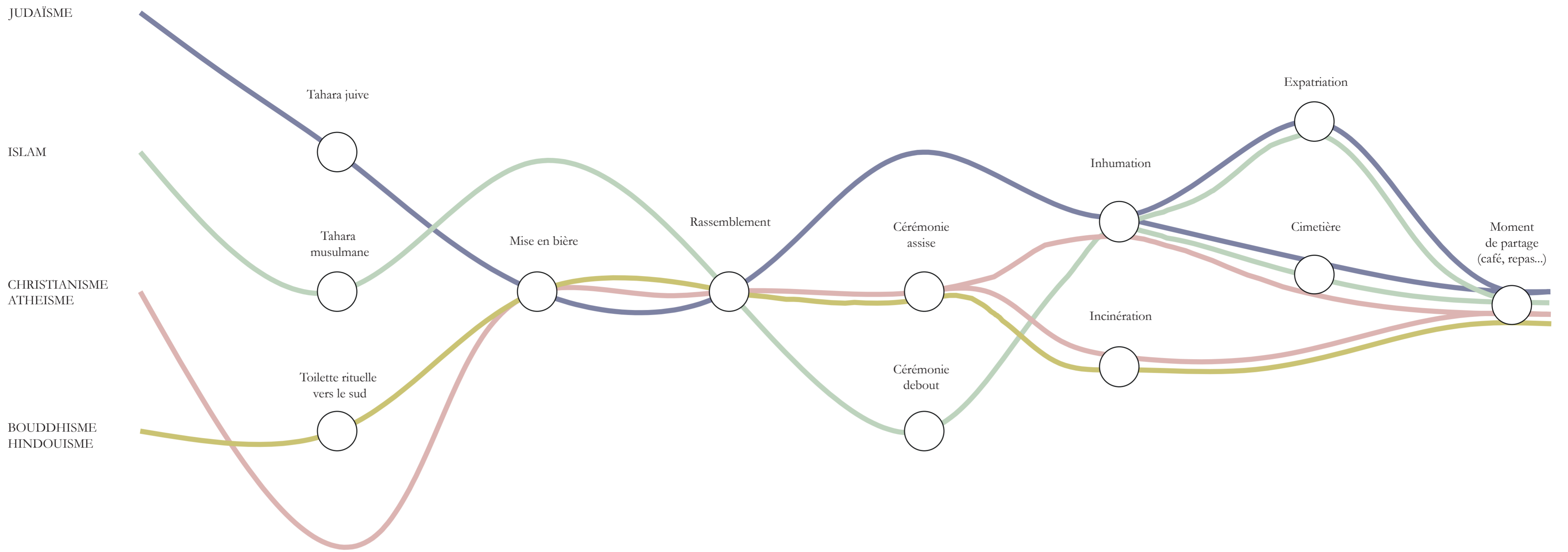
*Le cimetière catholique : un modèle au programme fragmenté*



LA MORT DANS LES RELIGIONS  
Parcours funéraires différenciés



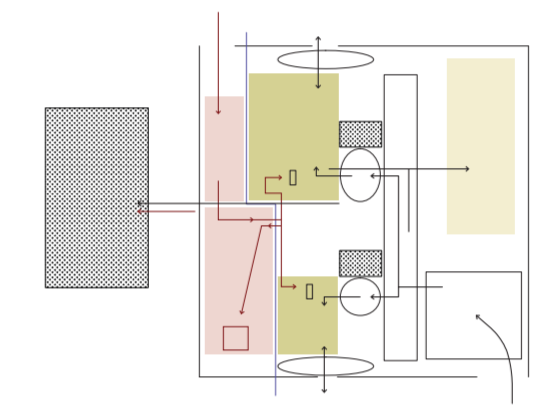
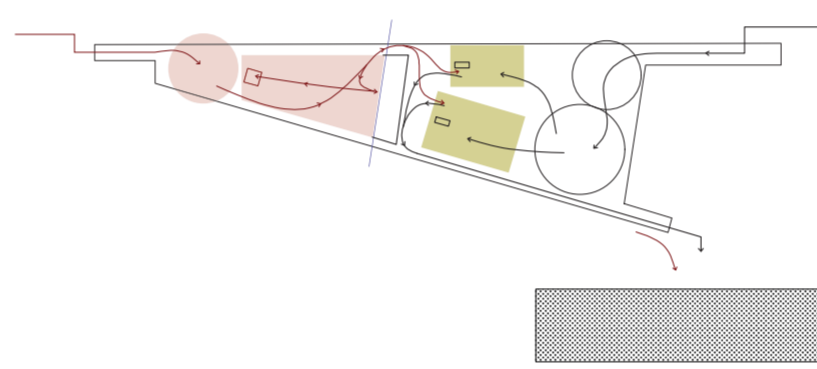
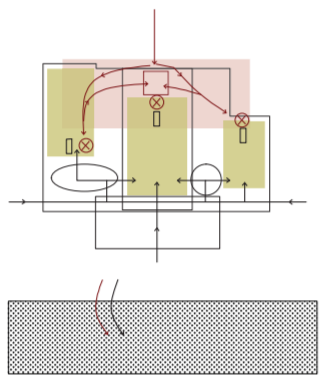
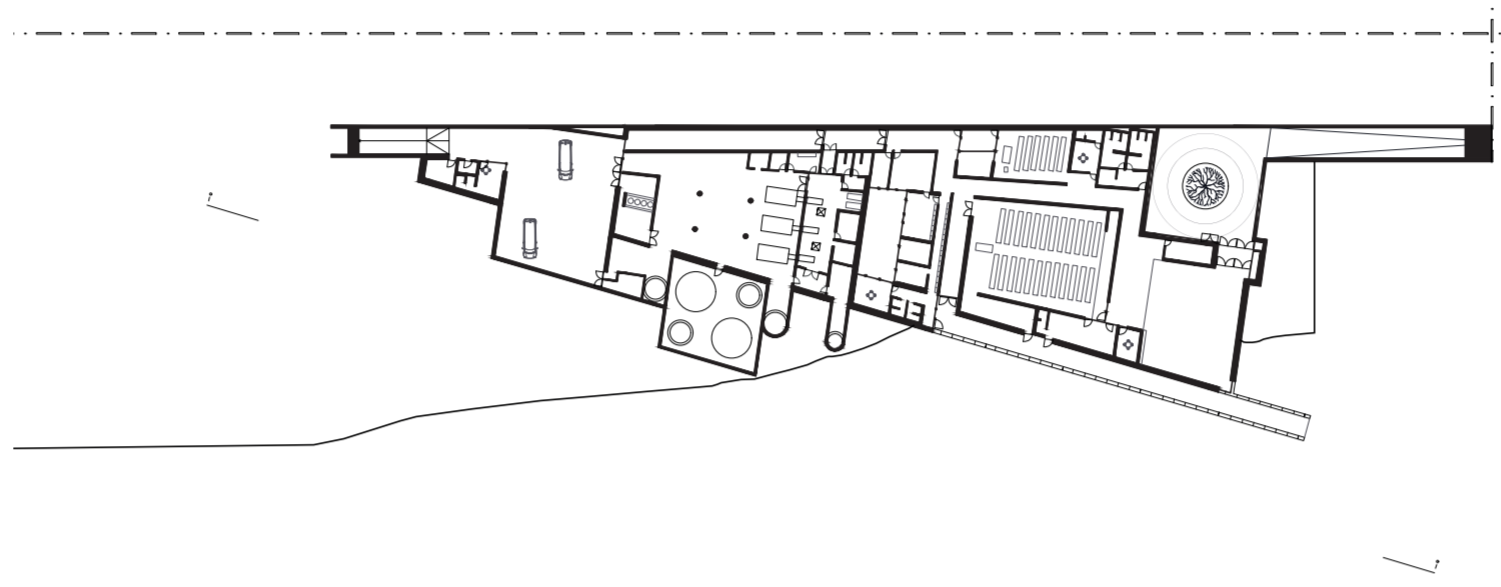
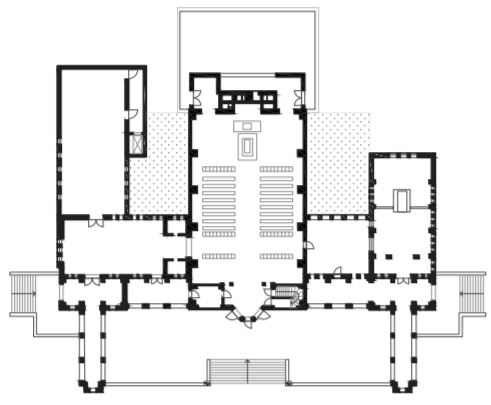
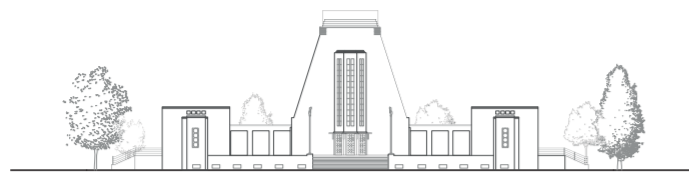
TYPOLOGIES DE CIMETIERES  
Qualités d'intégration de programmes funéraires



1. Cimetière islamique d'Altach. 2012, *Bernardo Bader Architekten*
3. Cimetière vertical de Rozzano (non-réalisé). 1959, *Nanda Vigo*
4. Cimetière de Monte Carasso. 1979, *Luigi Snozzi*
6. Cimetière de Laeken. 1854-1928, *J.Poelaert, E.Bockstael, F.Malfait*
7. Cimetière San Michèle. 1807

1:2000

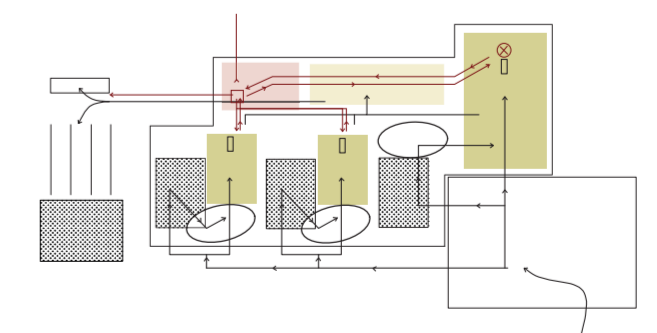
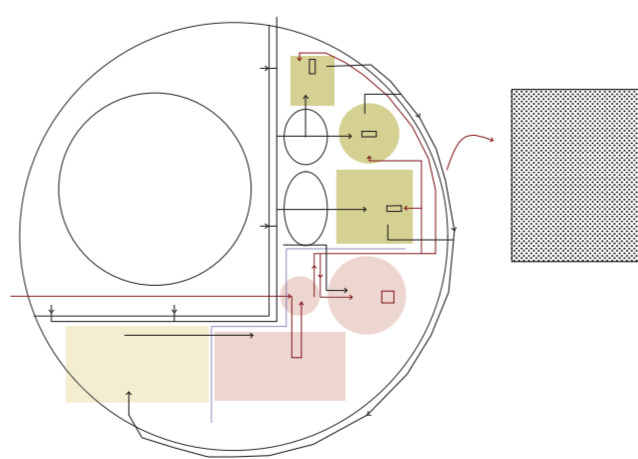
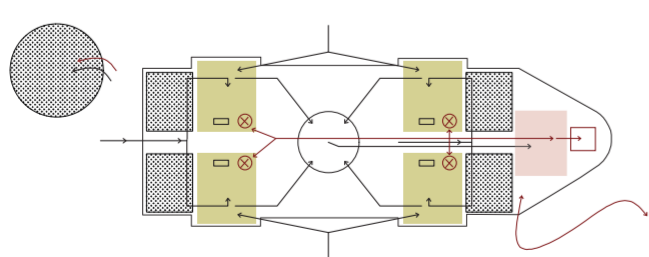
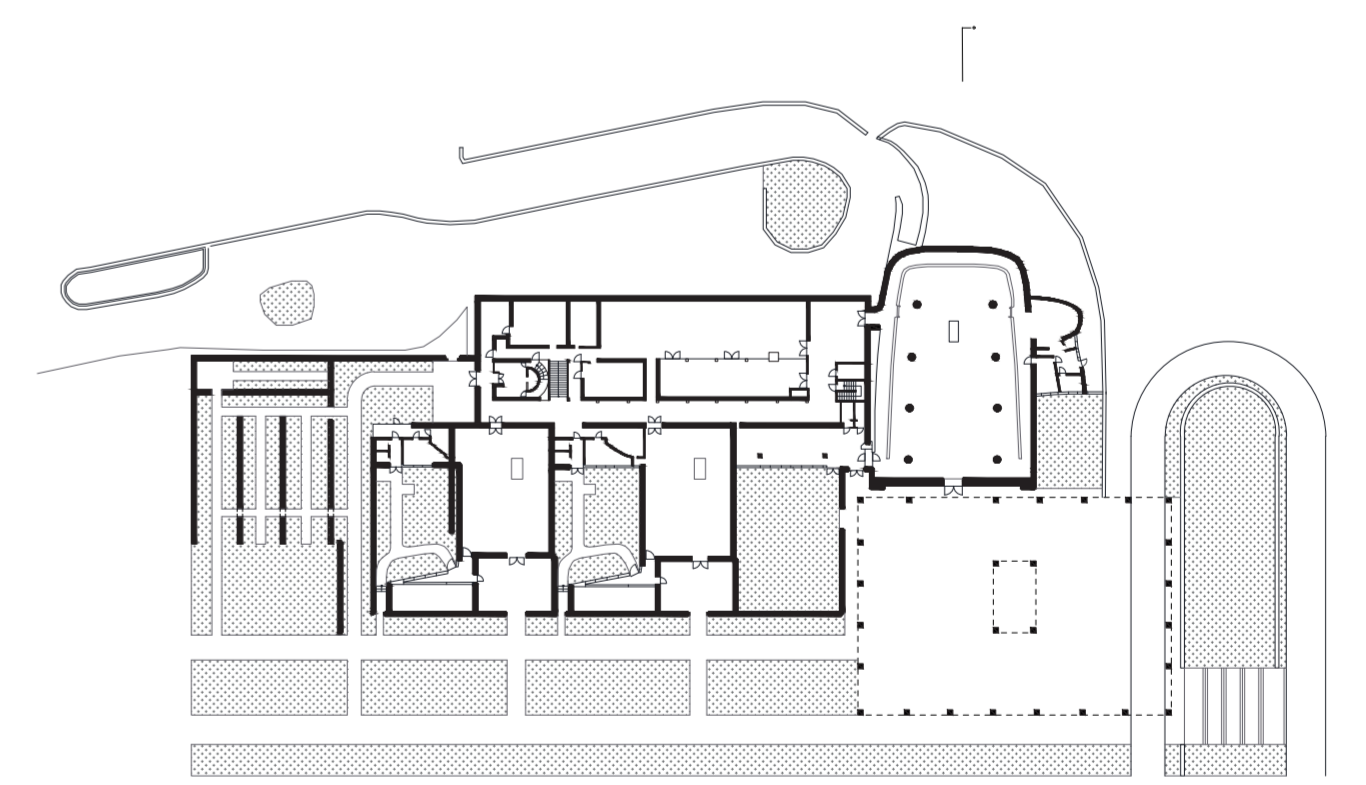
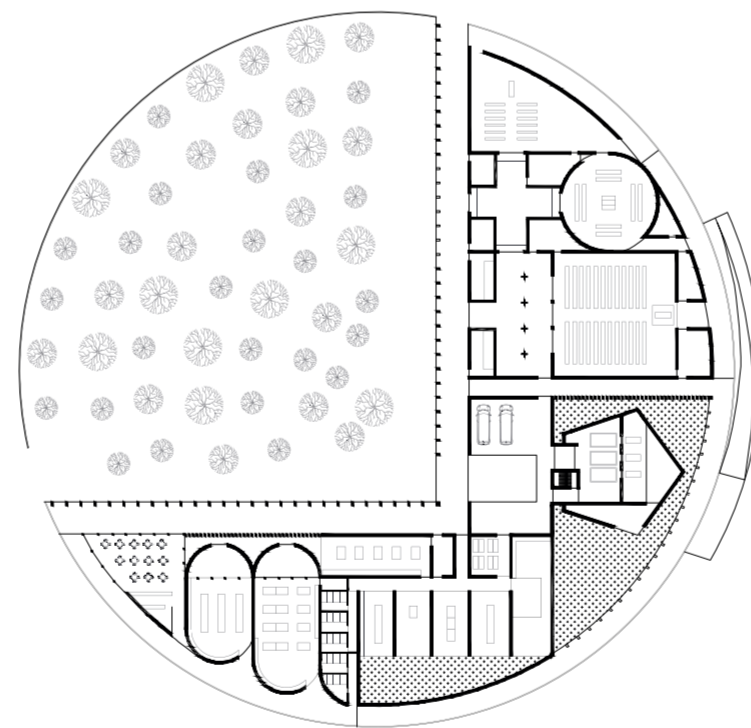
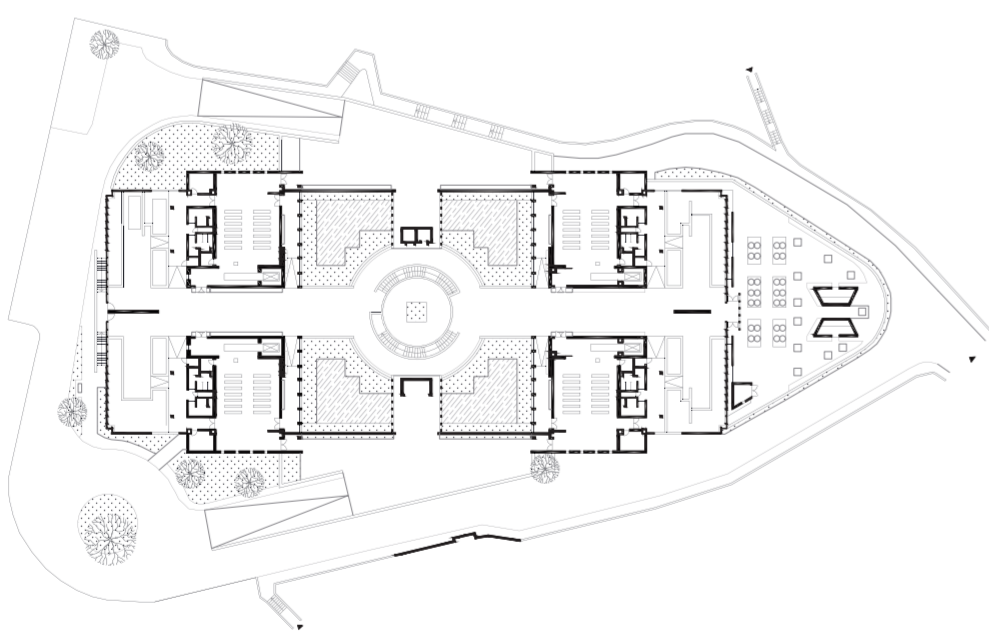
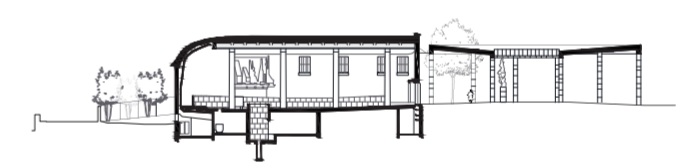
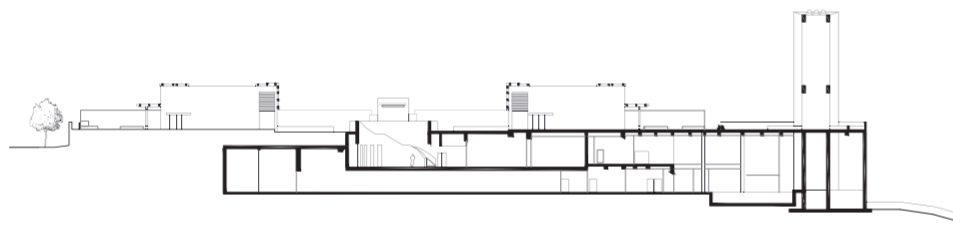
CREMATORIUMS



1

2

3

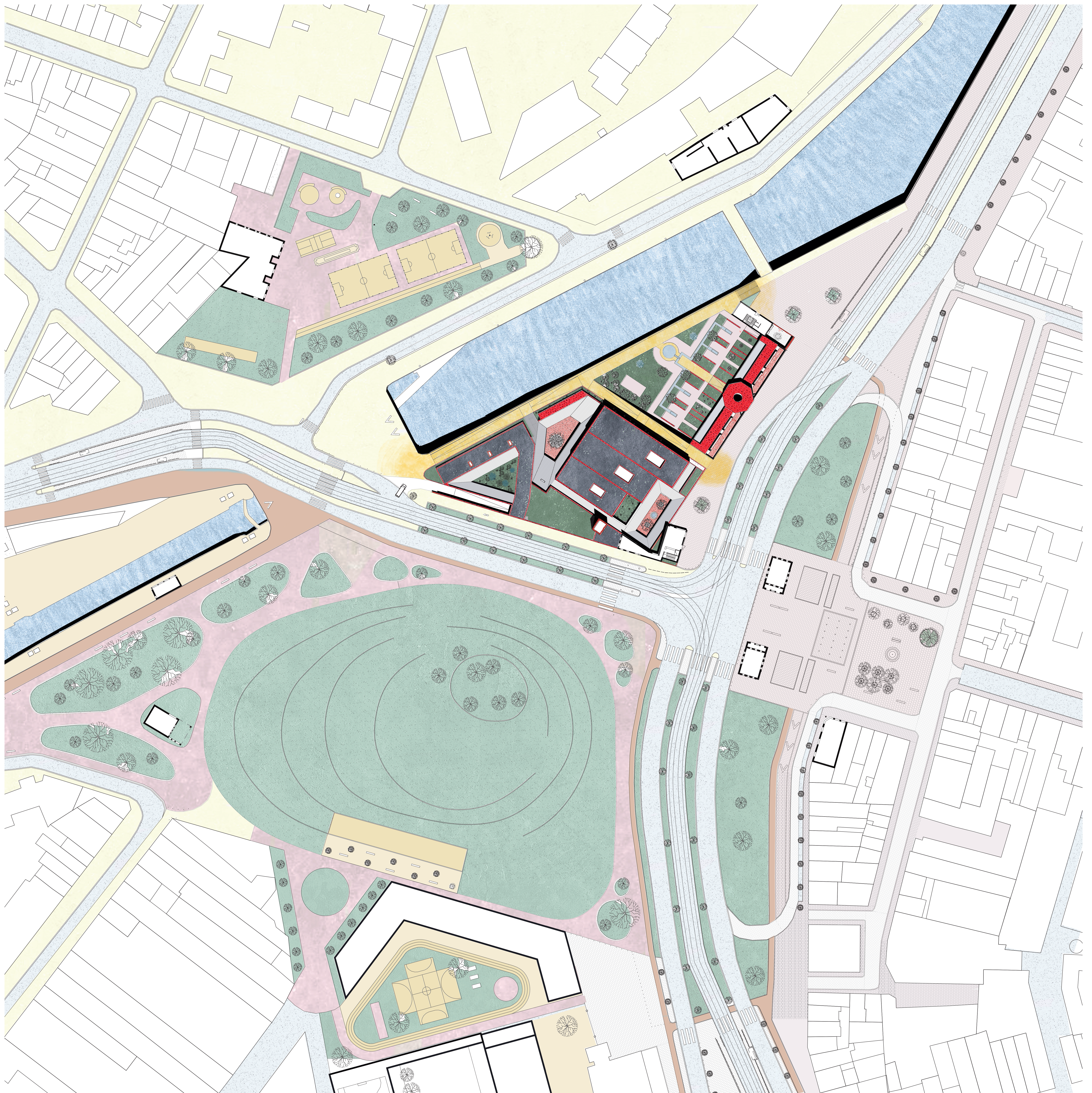


4

5

6

1. Crématorium Fritz-Schumacher. 1933, *Fritz-Schumacher*
2. Crématorium de Uitzicht. 2011, *SumProject*
3. Crématorium de Aalst. 2018, *Kaan Office*
4. Crématorium Diamond Hill. 2009, *ArchSD*
5. Crématorium de Zemst (non-réalisé). 2023, *NU architecten*
6. The Woodland Cemetery. 1920, *Asplund & Leverenz*



- Islam ■
- Judaïsme ■
- Hindouisme ■
- Incinération ■

*La zone du souvenir*

*La zone fraternelle*

*La zone de l'eau vivante*

