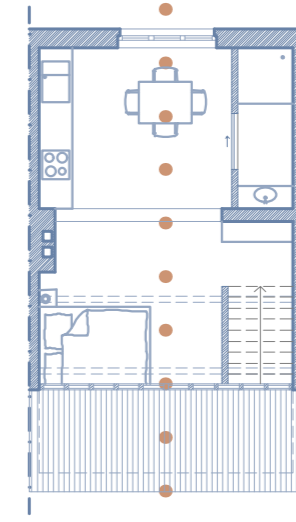
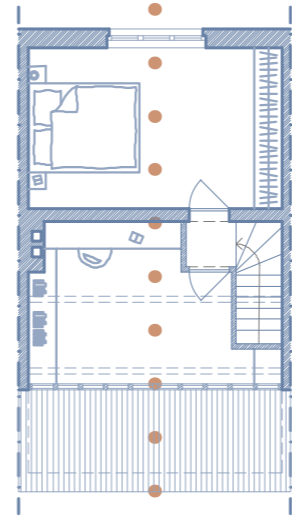
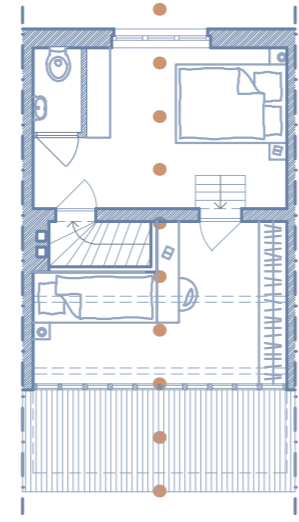
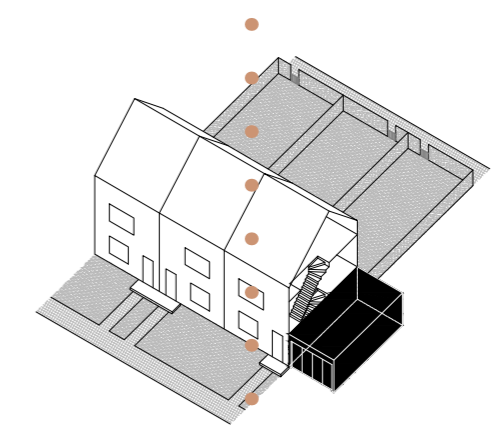
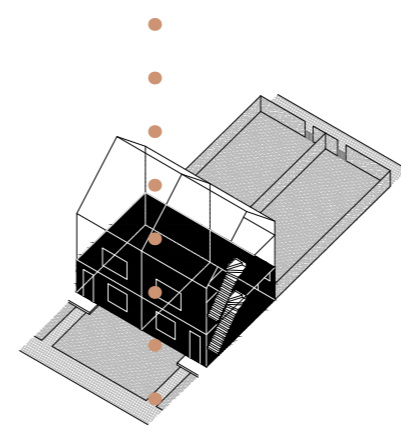
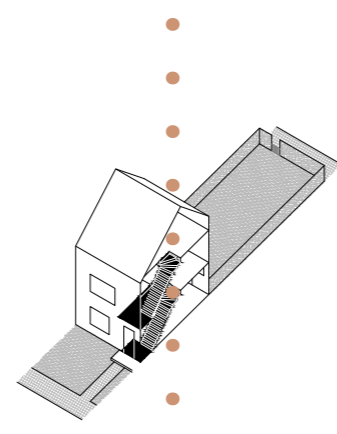
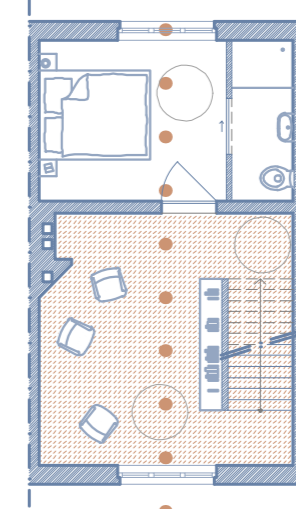
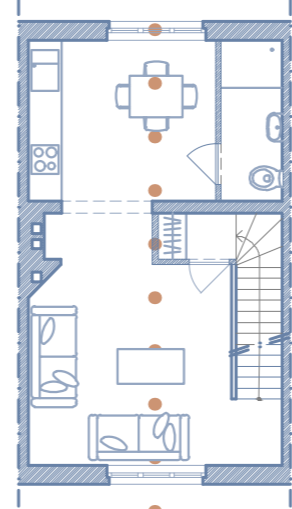
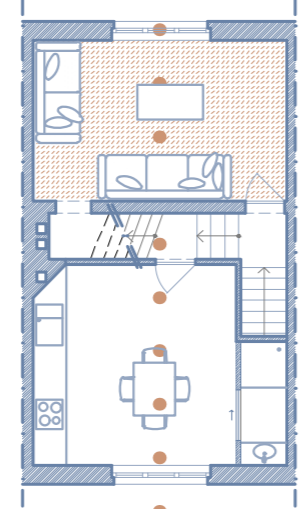


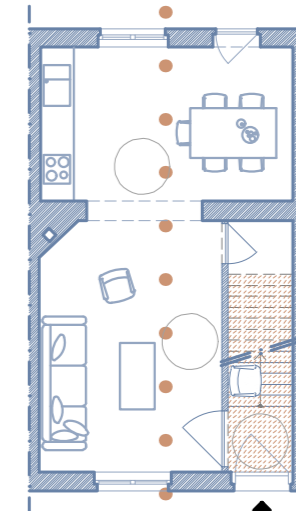
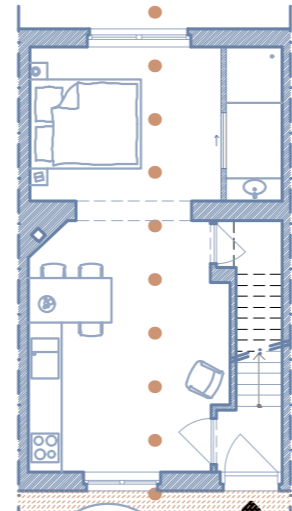
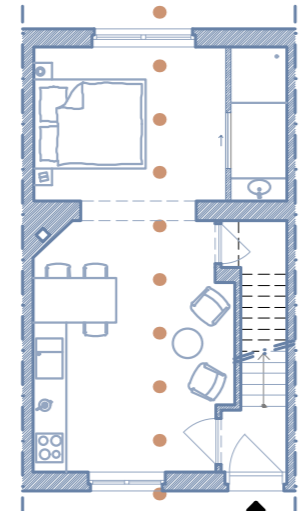
MODE D'HABITER



R+2



R+1



R0

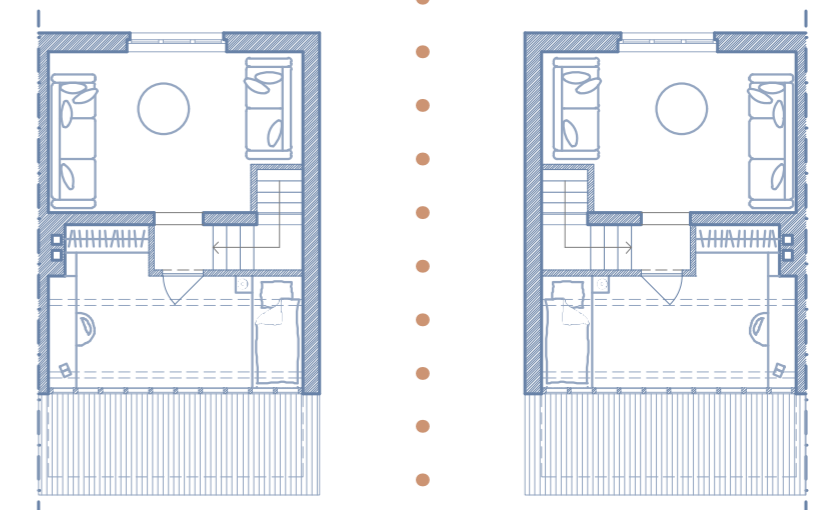
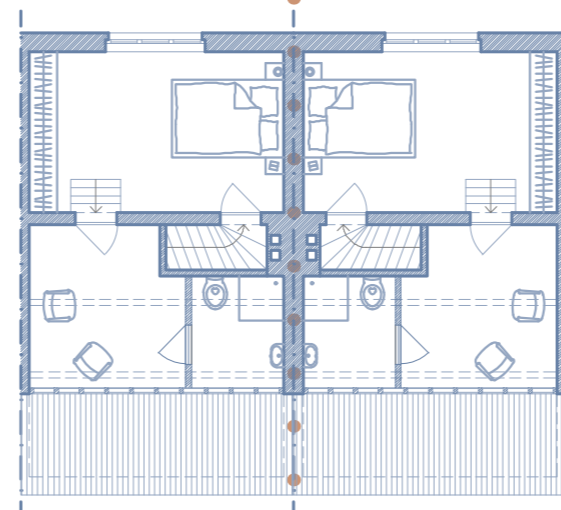
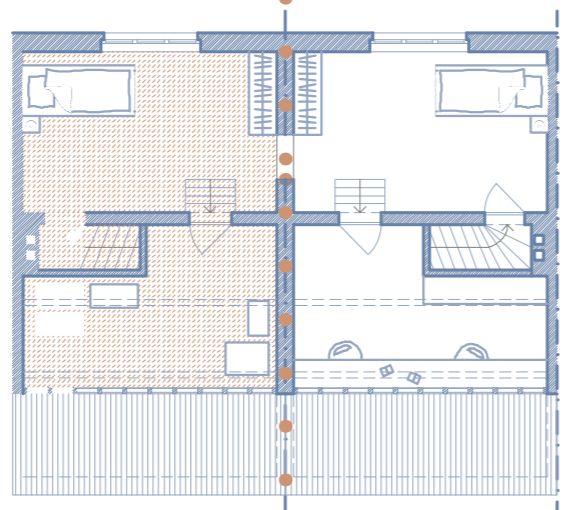
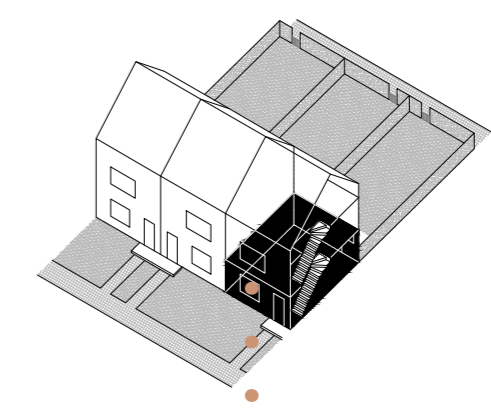
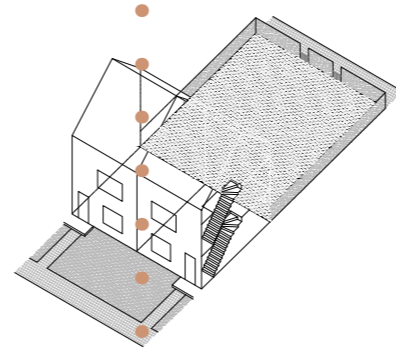
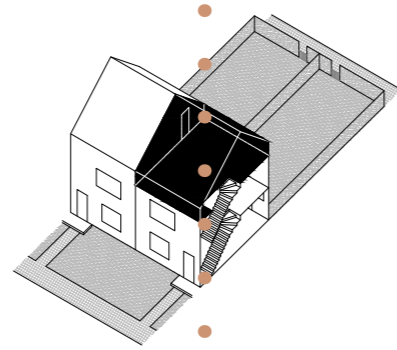
INTERVENTION

Perspective de conservation

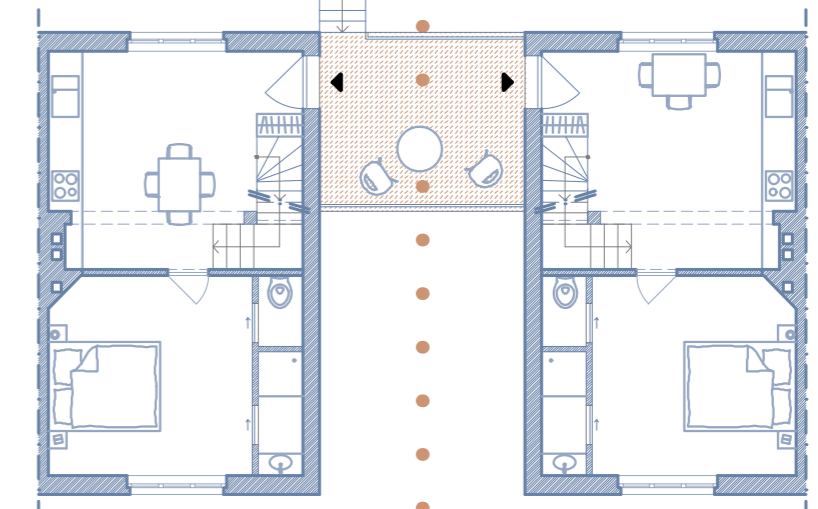
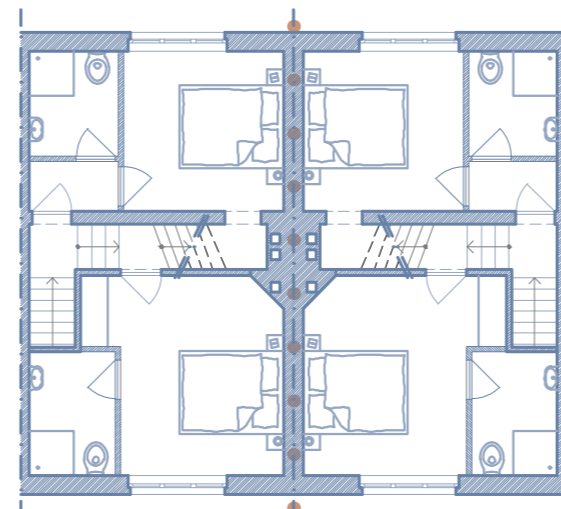
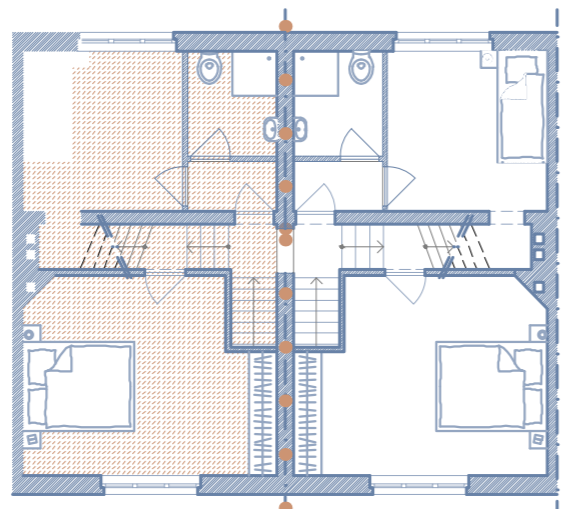
Intervention légère

Intervention lourde

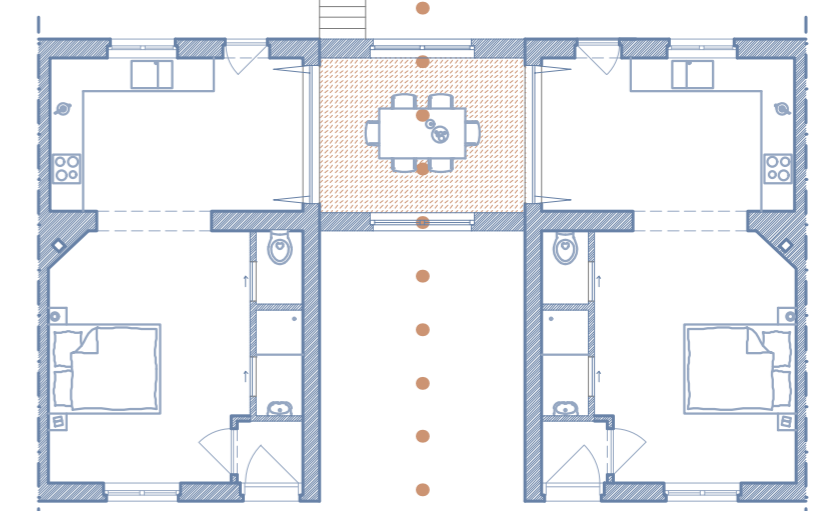
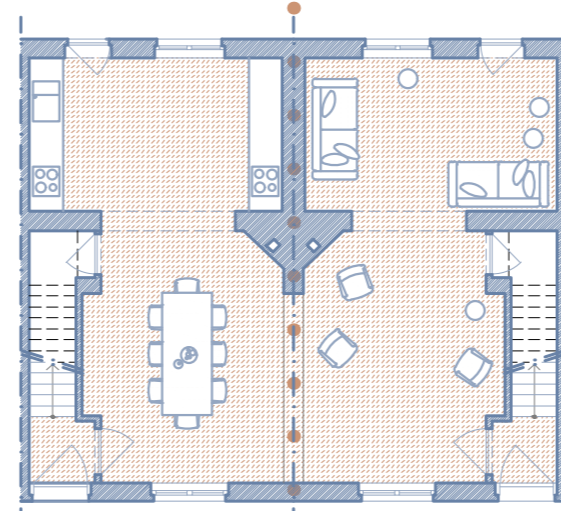
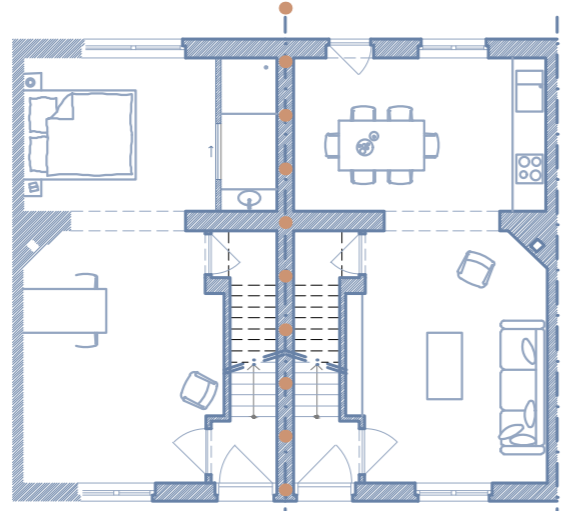
MODE D'HABITER



R+2



R+1



R0

INTERVENTION

Perspective de conservation

Intervention légère

Intervention lourde

Échelle domestique
STRATÉGIES D'INTERVENTION SUR LES MAISONS EXISTANTES
Lux Stéphanie