

# Evolution de l'industrie à Bruxelles

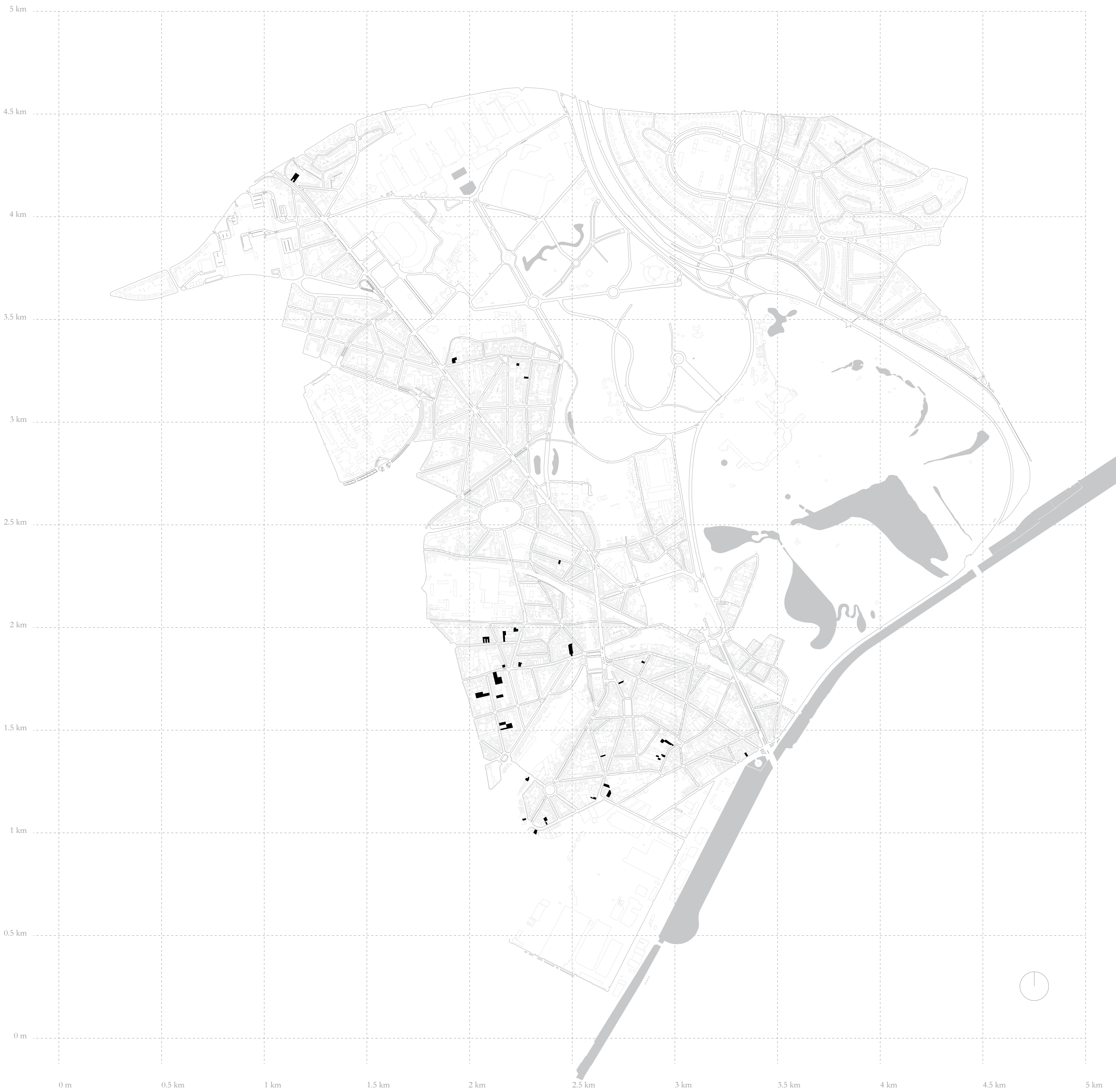


situation au 18e siècle

situation en 1910

situation en 2001

localisation de la commune de Laeken

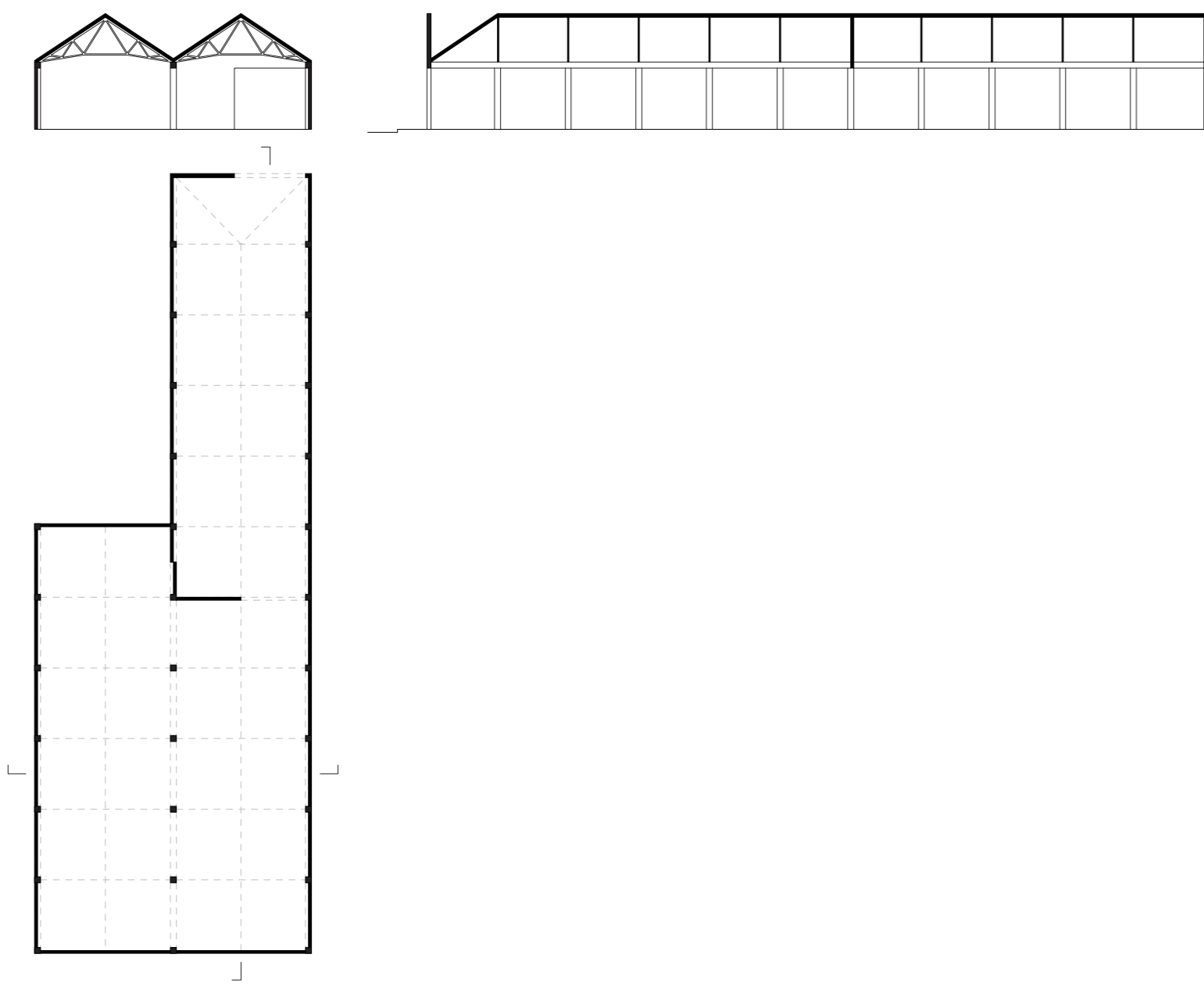


## Localisation des micro-industries dans la commune de Laeken

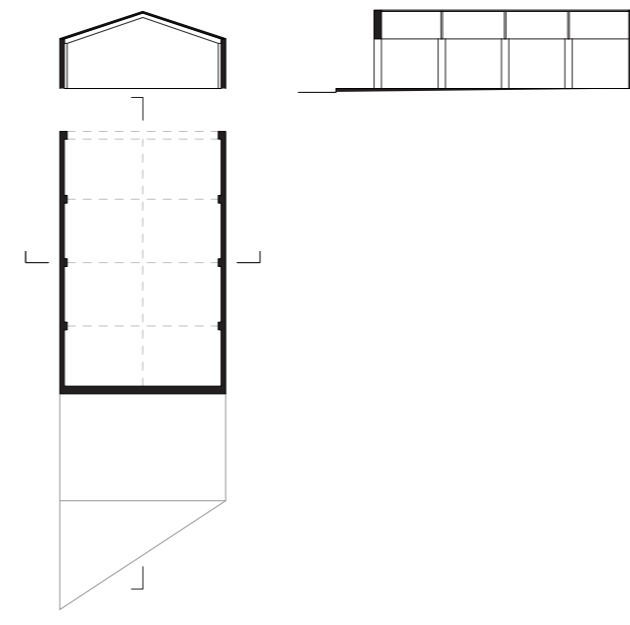
Atelier de recherche : Typologies | UCL - Loci - Bruxelles | 2023-2024  
Porrier Arthur

# Typo-morphologie : Halle industrielle

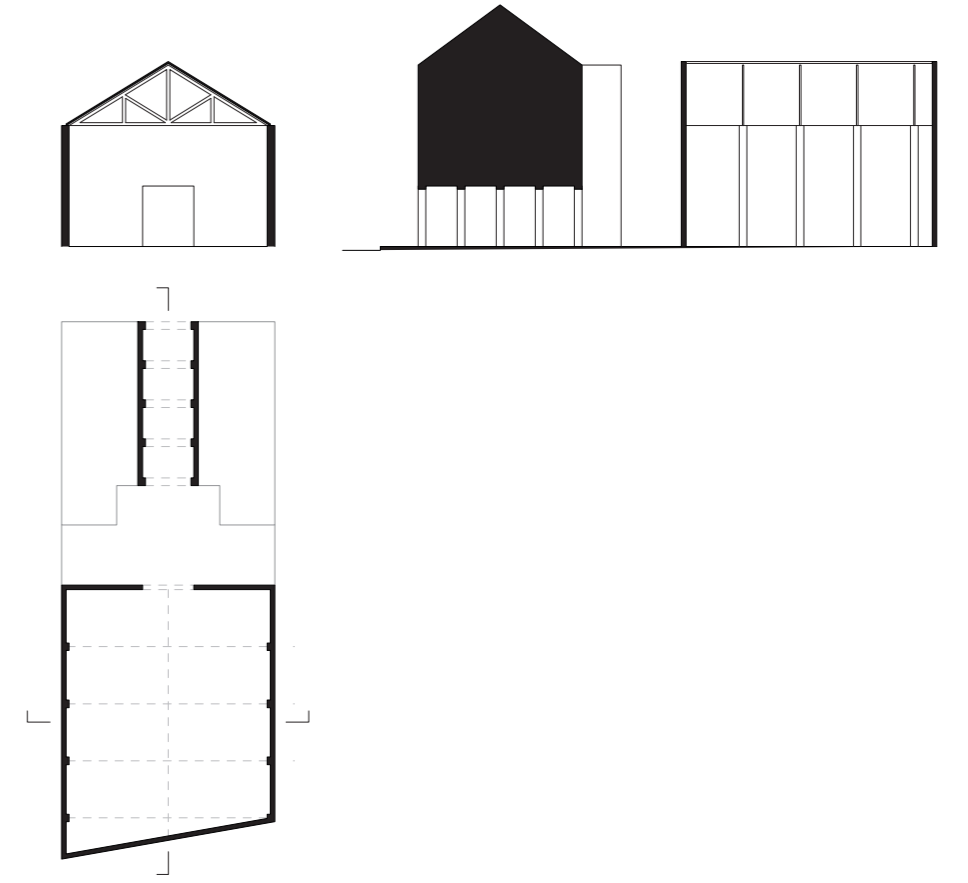
Mitsubishi motors



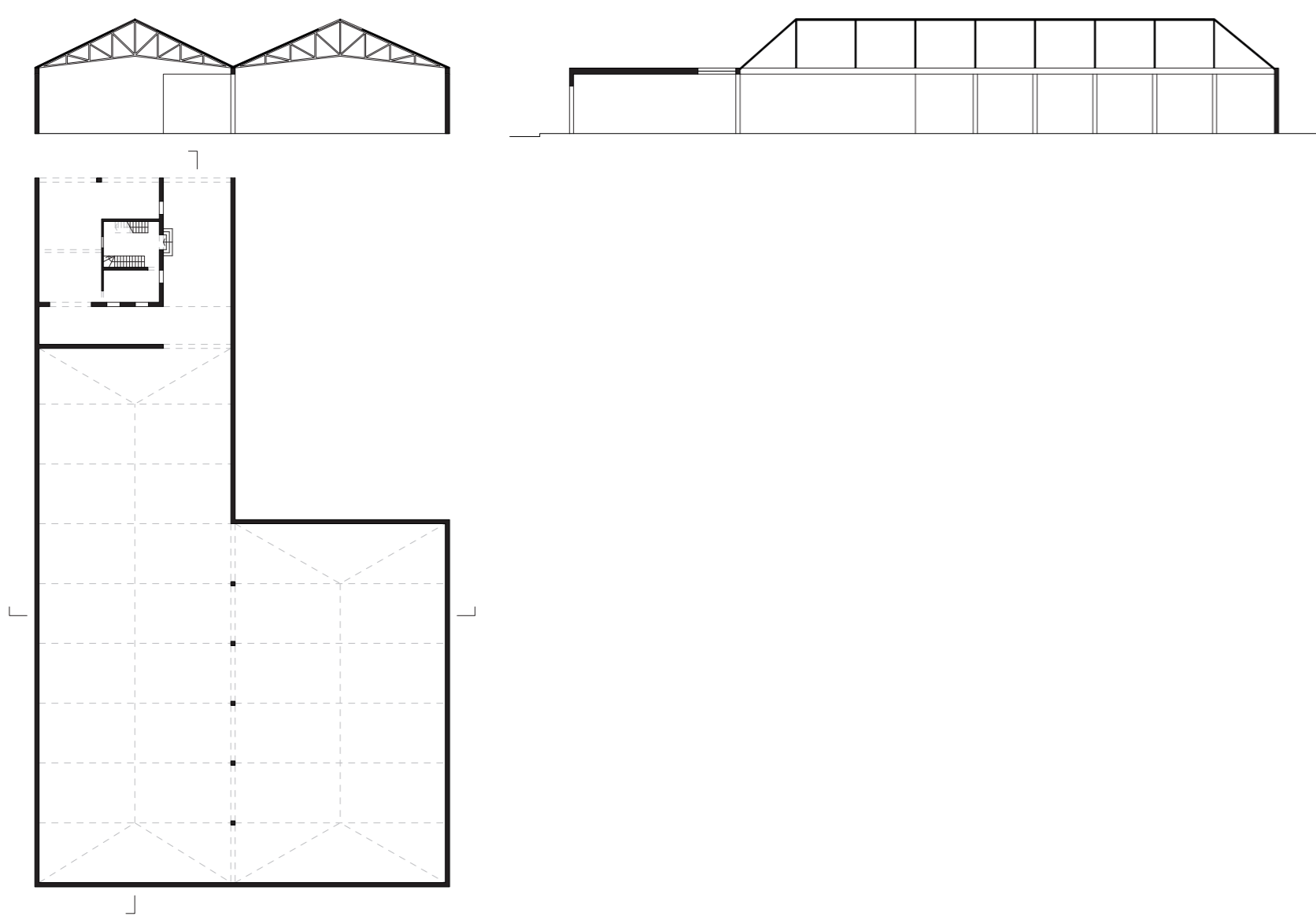
Absolut Cars



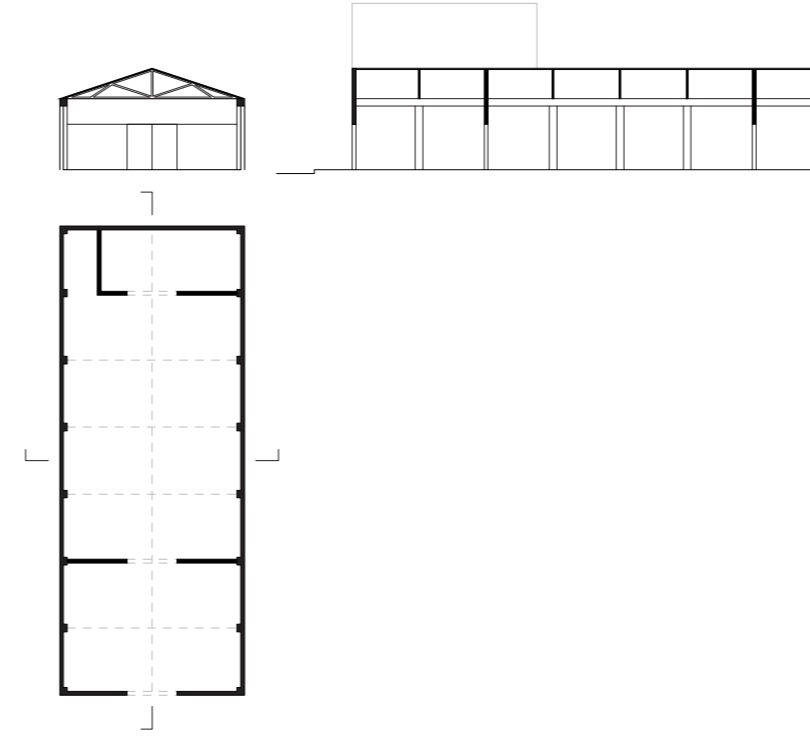
ABG AUTO



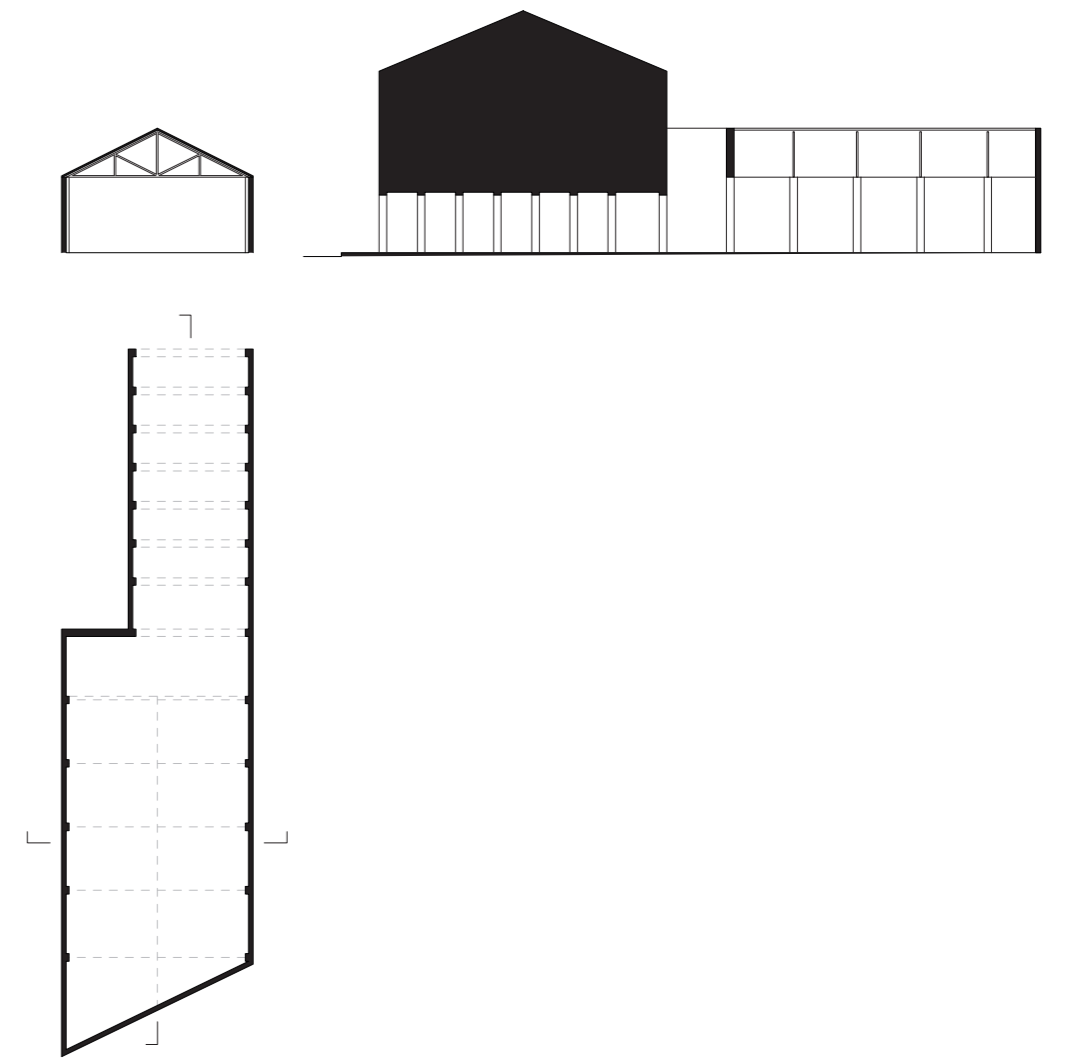
Opel recup center



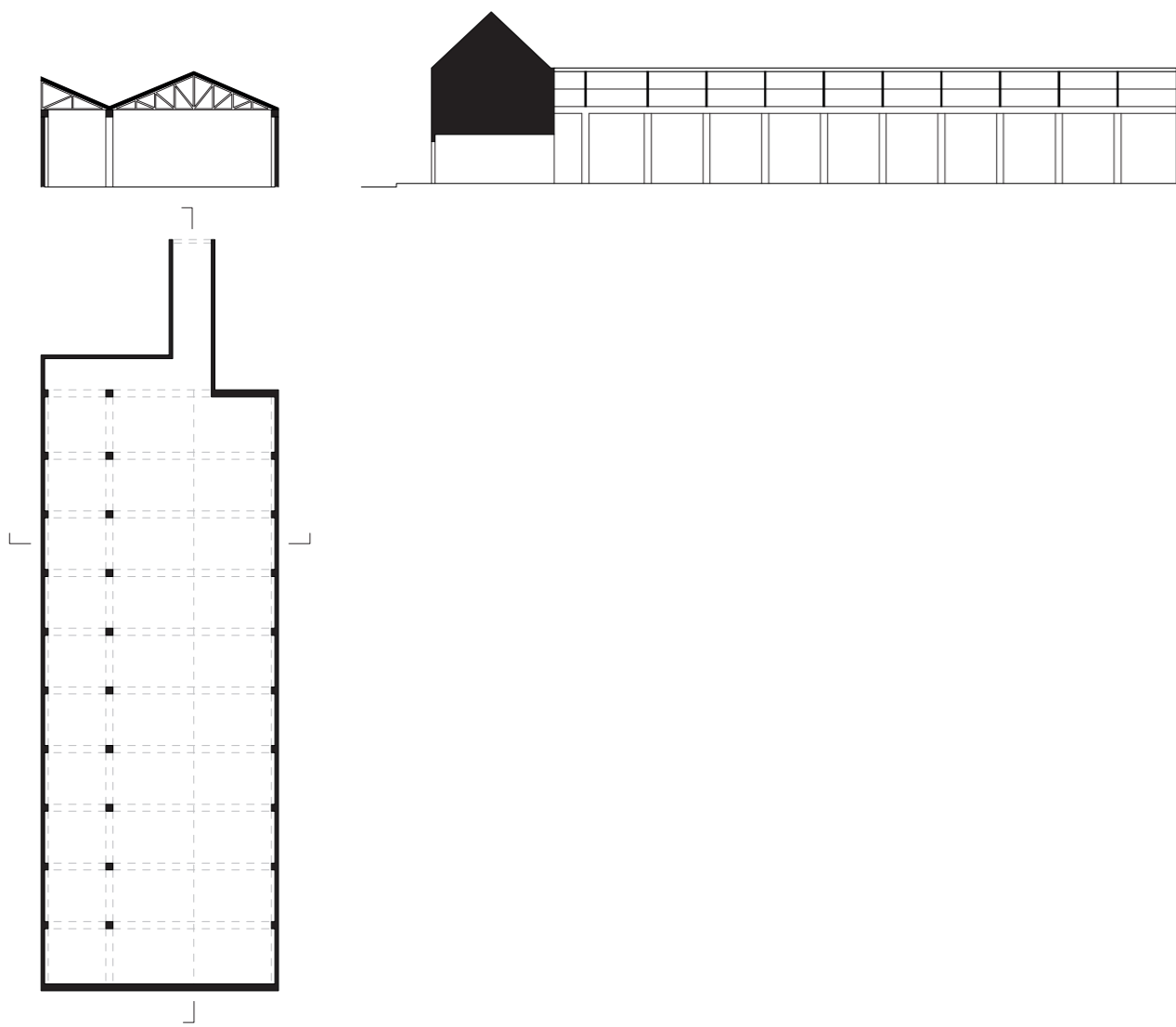
Depauw Engineering Brussels



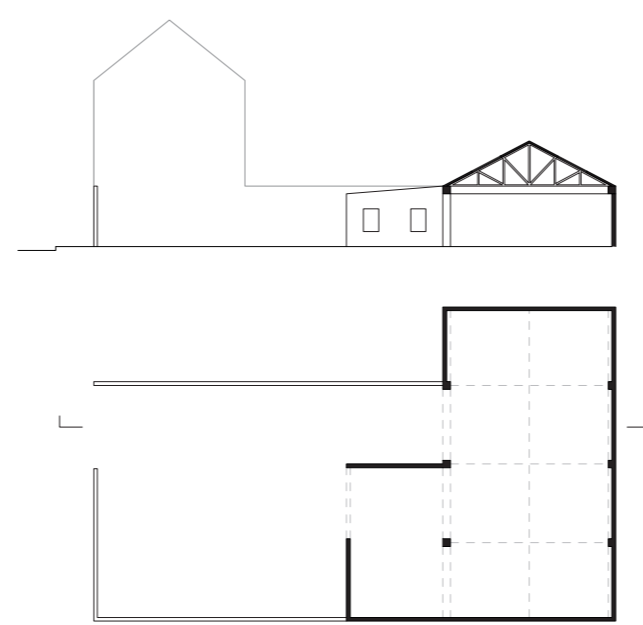
Carrosserie T&G Bas



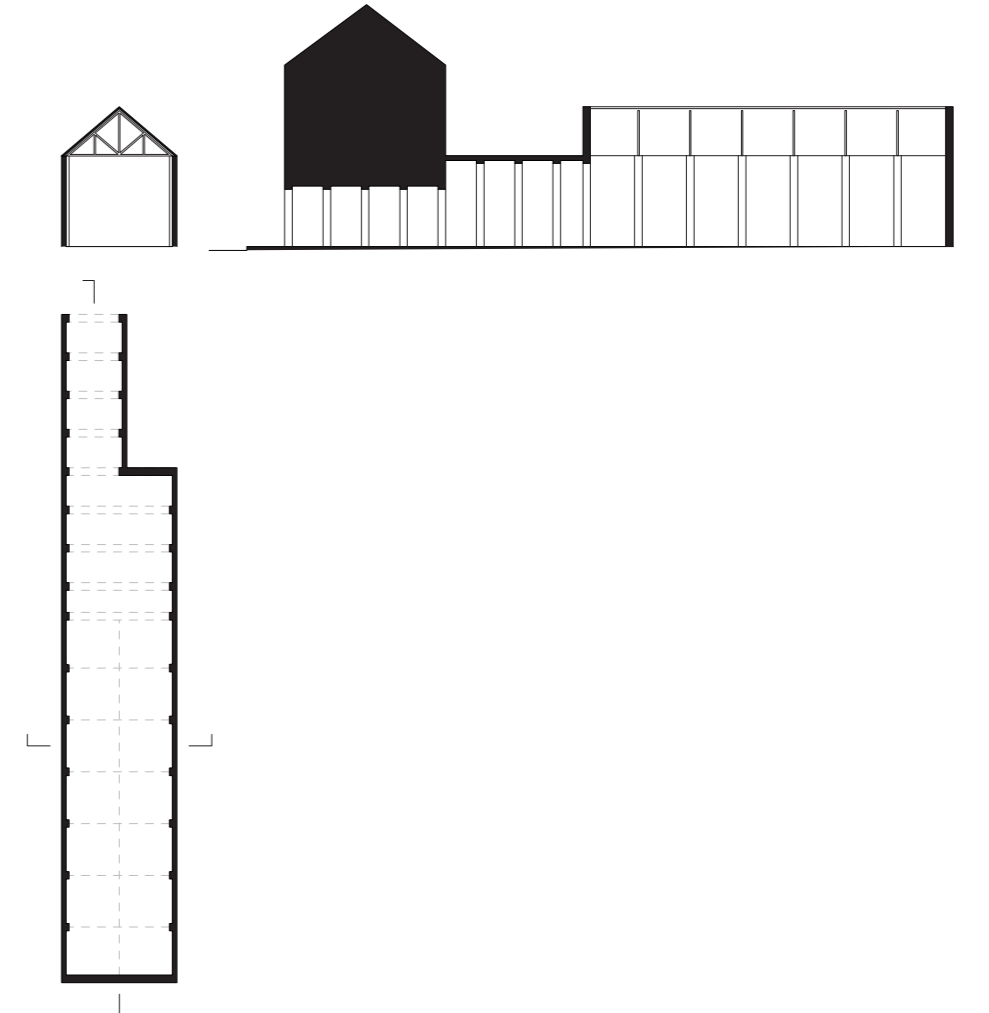
Autommium



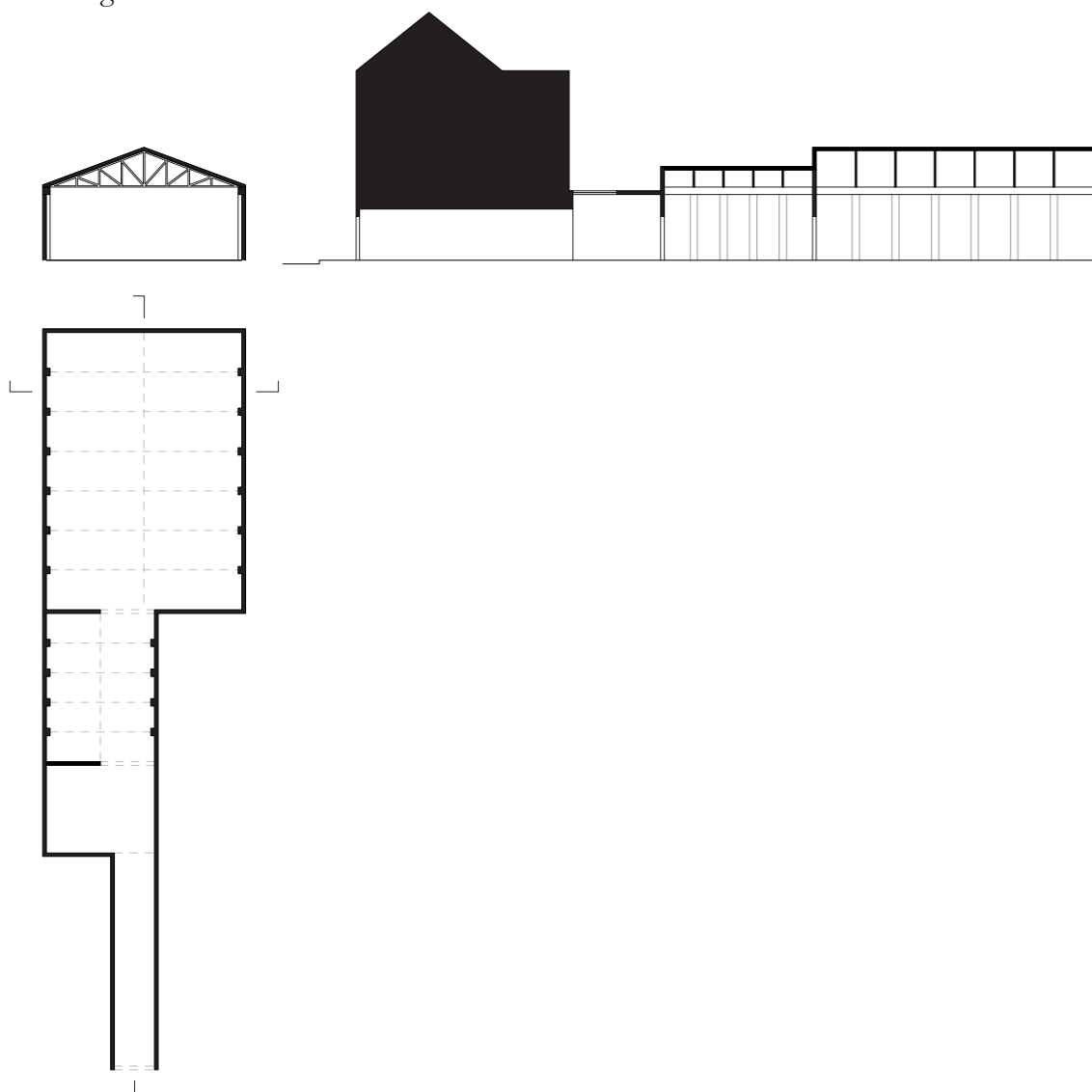
Garage Paul



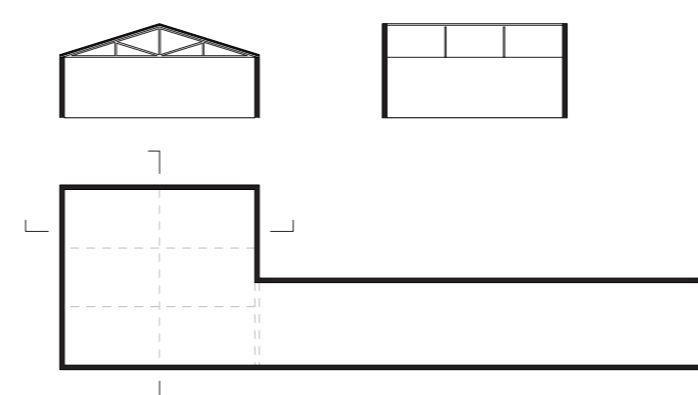
Carrosserie H.D



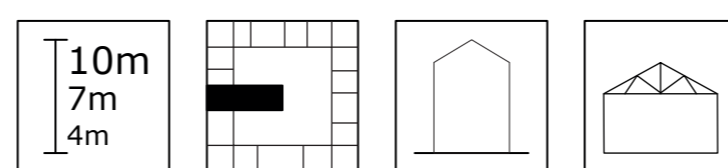
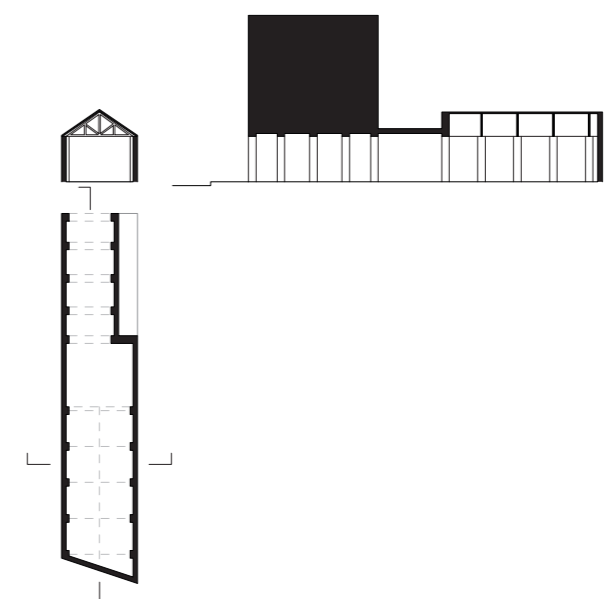
Garage Laeken



Gravelines

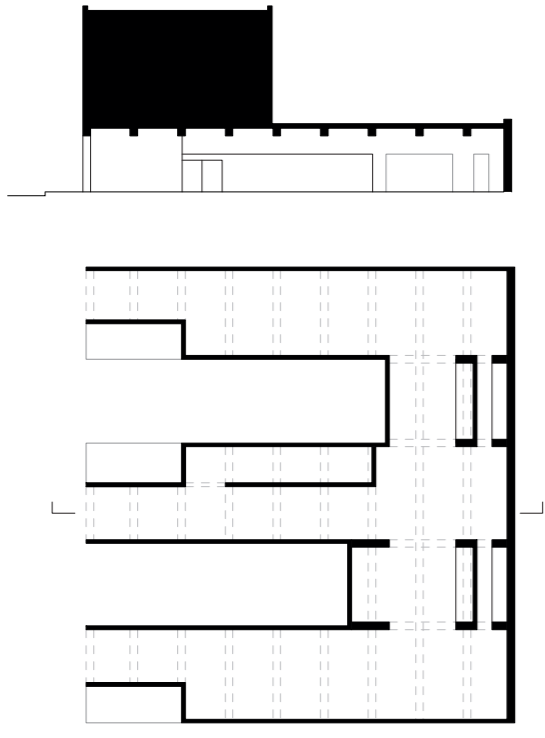


Ibo Garage

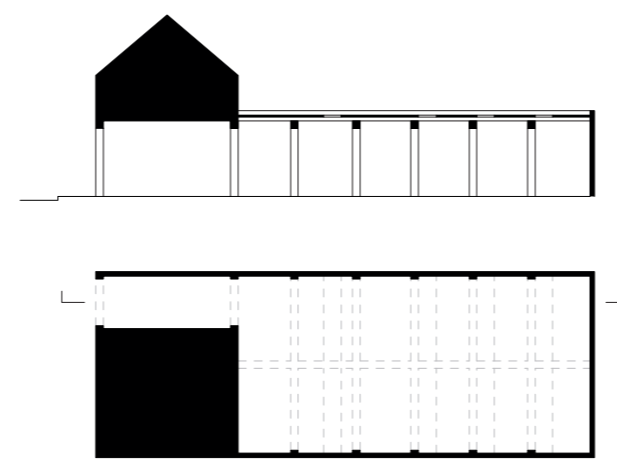


# Typo-morphologie : Galette

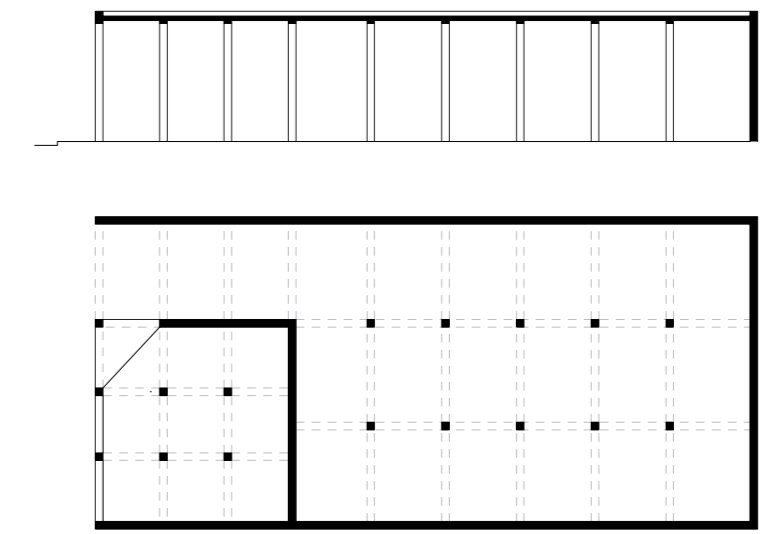
Maurice & Zonen  
Garage-Carrosserie



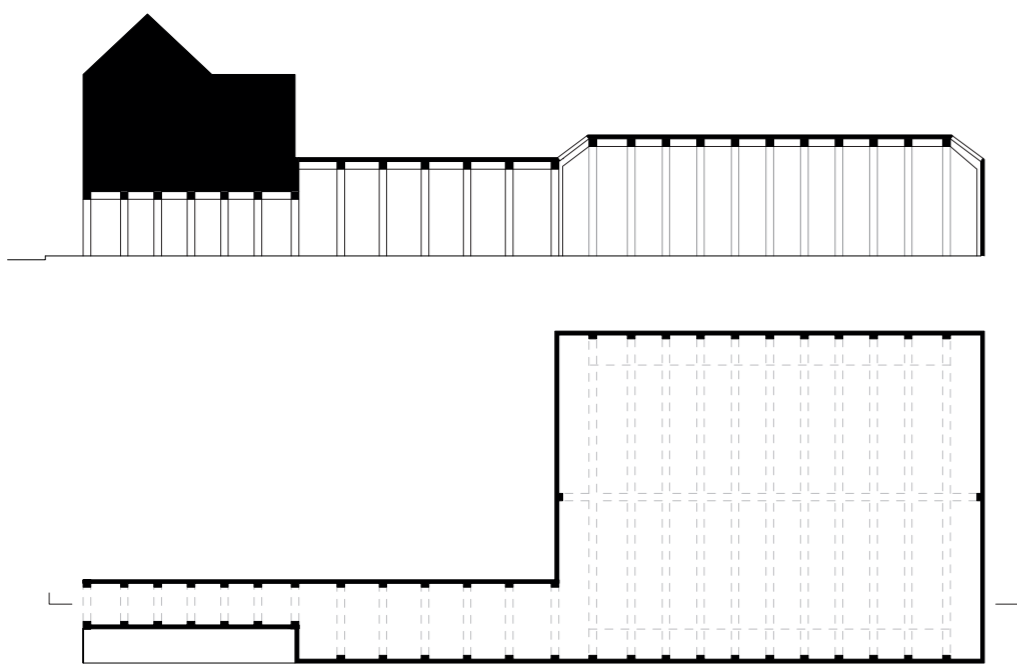
Costa Car



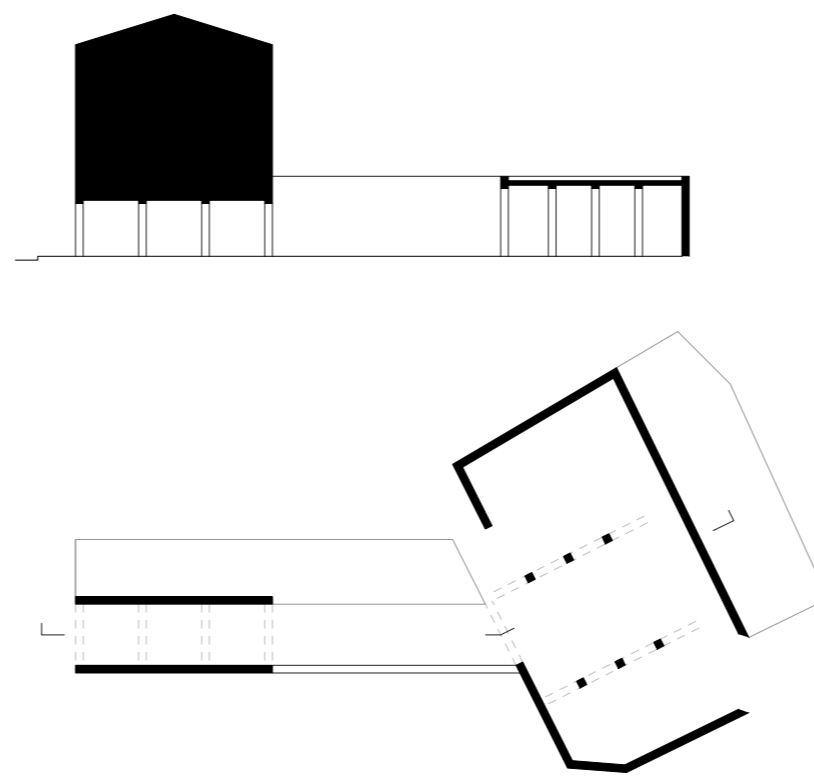
Garage  
AUTOMIUM BOSCH  
Car Service



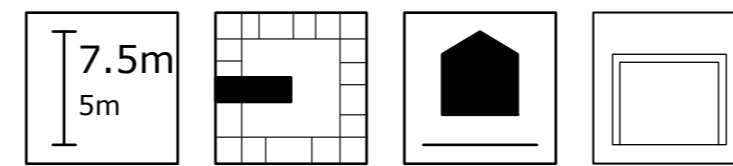
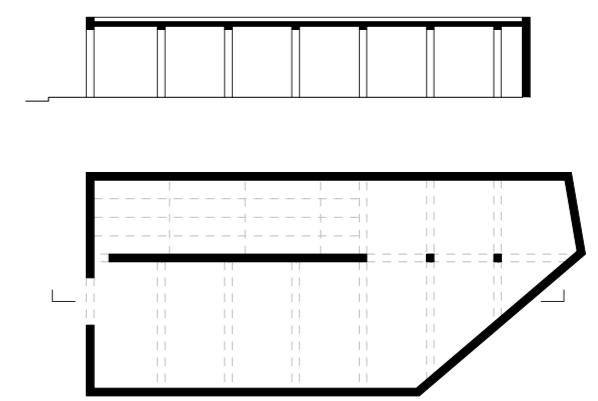
Garage Léopold



Mugello Carrosserie

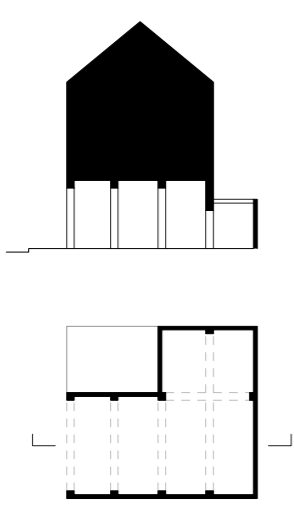


Speedglass

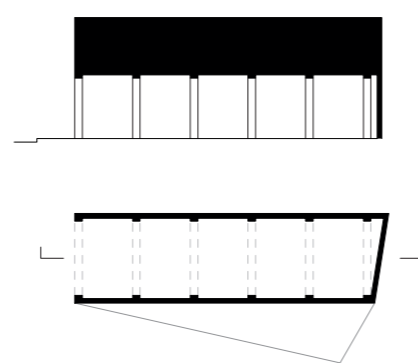


# Typo-morphologie : Pièce en front de rue

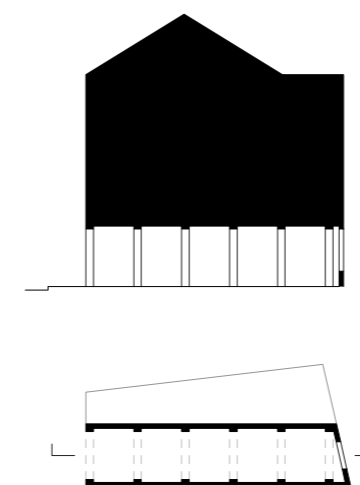
Carwash  
Fiza & Taha



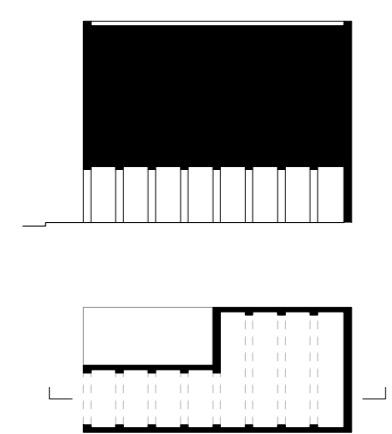
GARAGE  
FOUTA-PNEUS



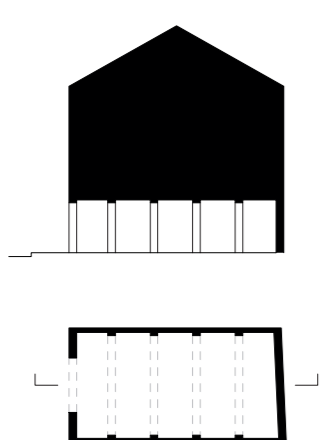
GARAGE  
AUTO KARA



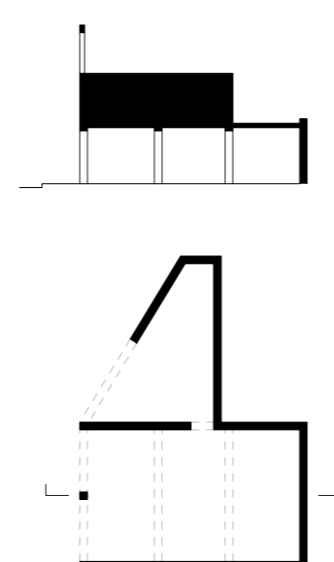
Carrosserie  
Galaxia



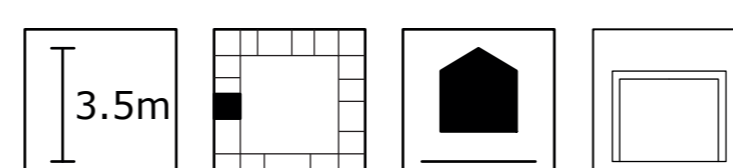
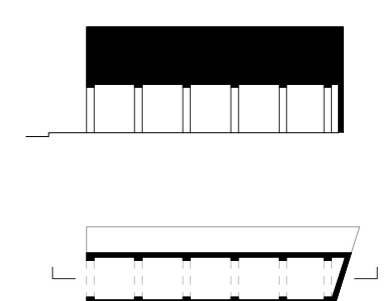
Maxi Car



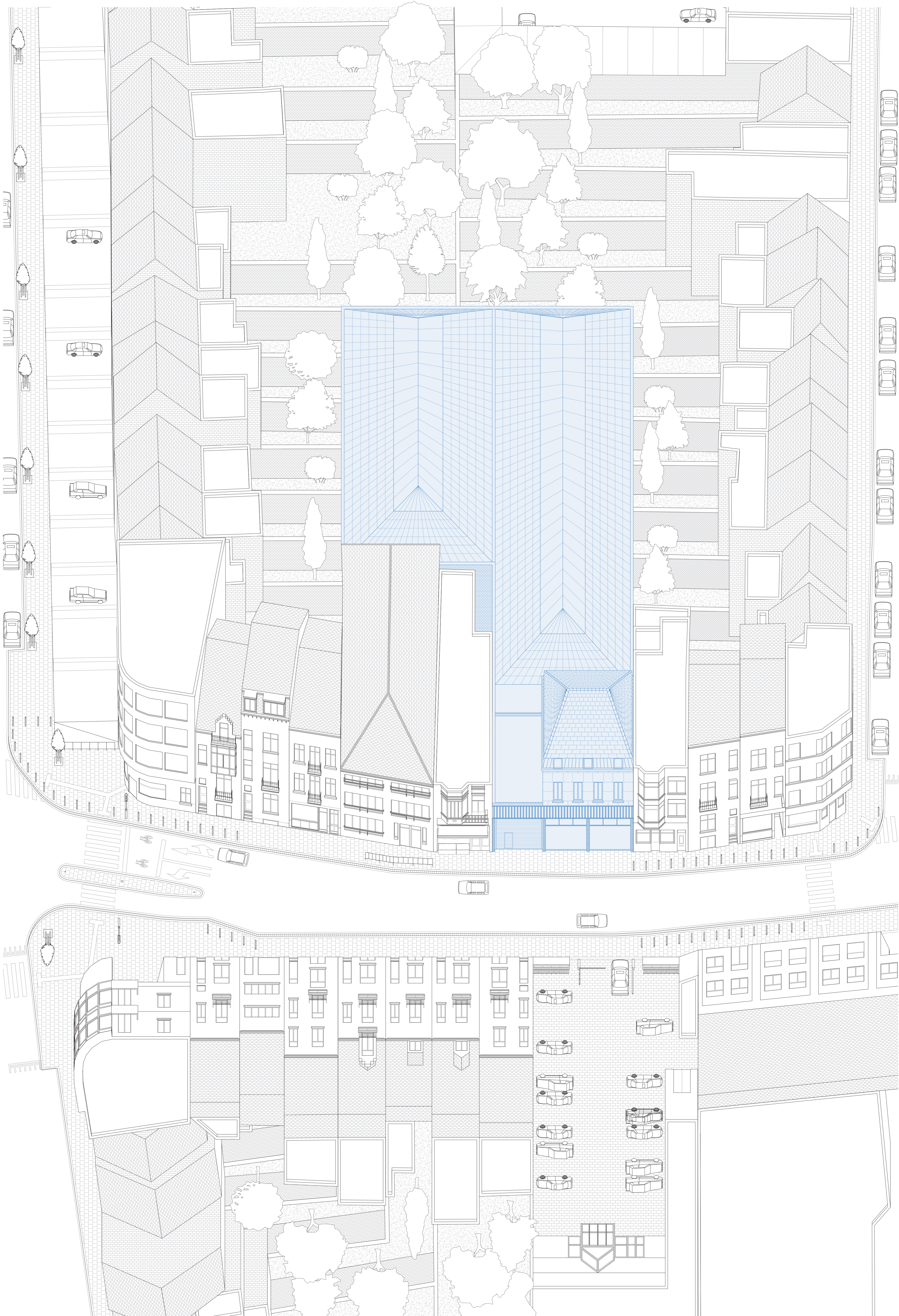
Auto signature



CAR WASH



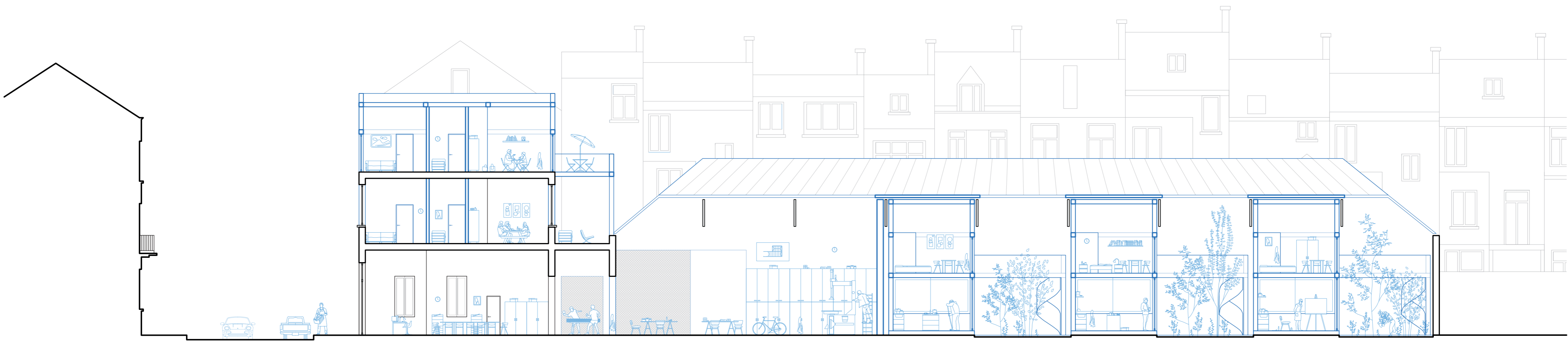




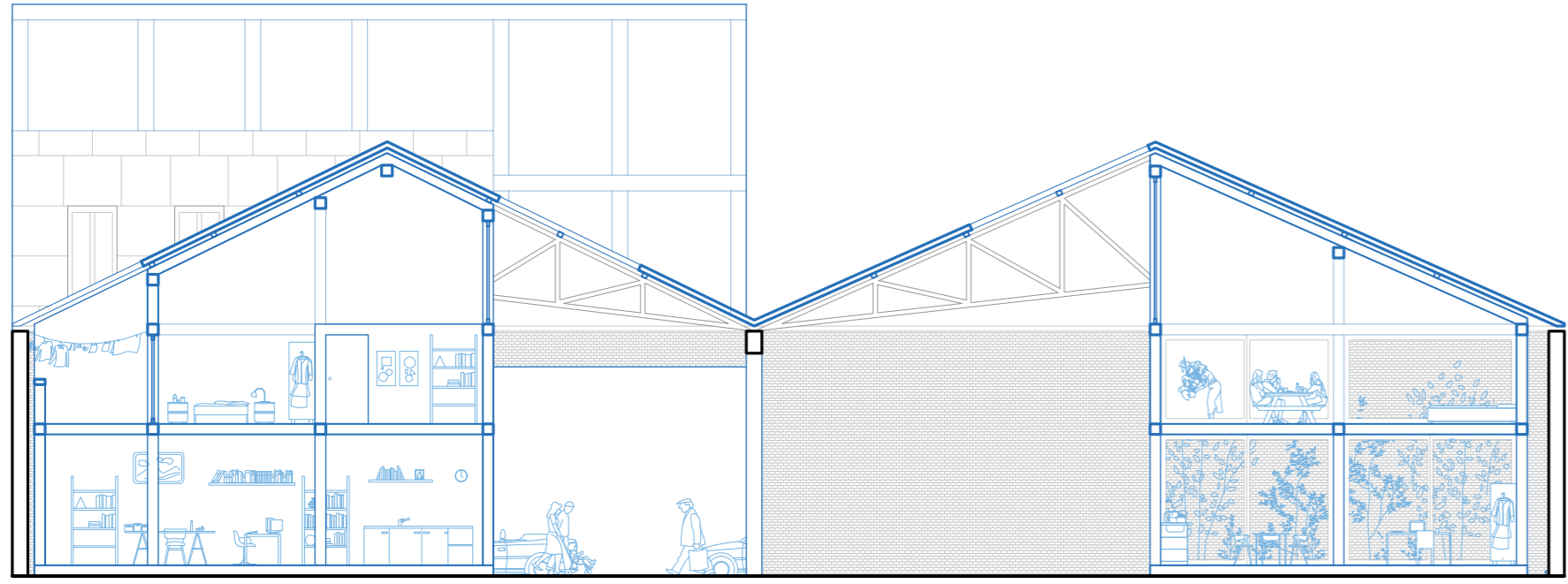
**Localisation du lieu d'intervention**

Atelier de recherche : Typologies | UCL - Loci - Bruxelles | 2023-2024  
Porlier Arthur

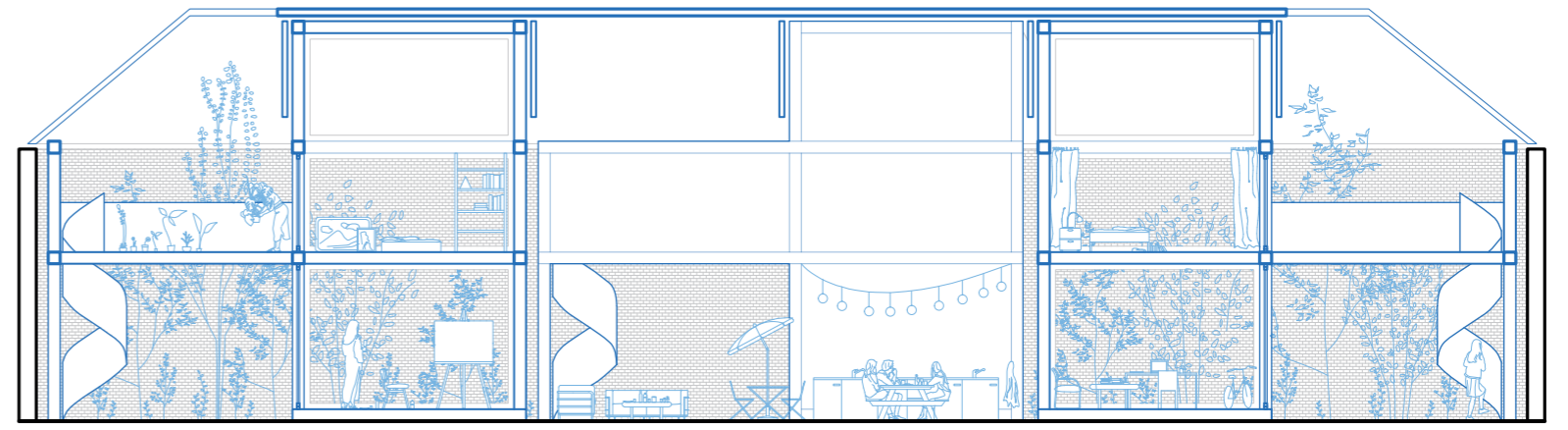
0 1 2 5 10 m



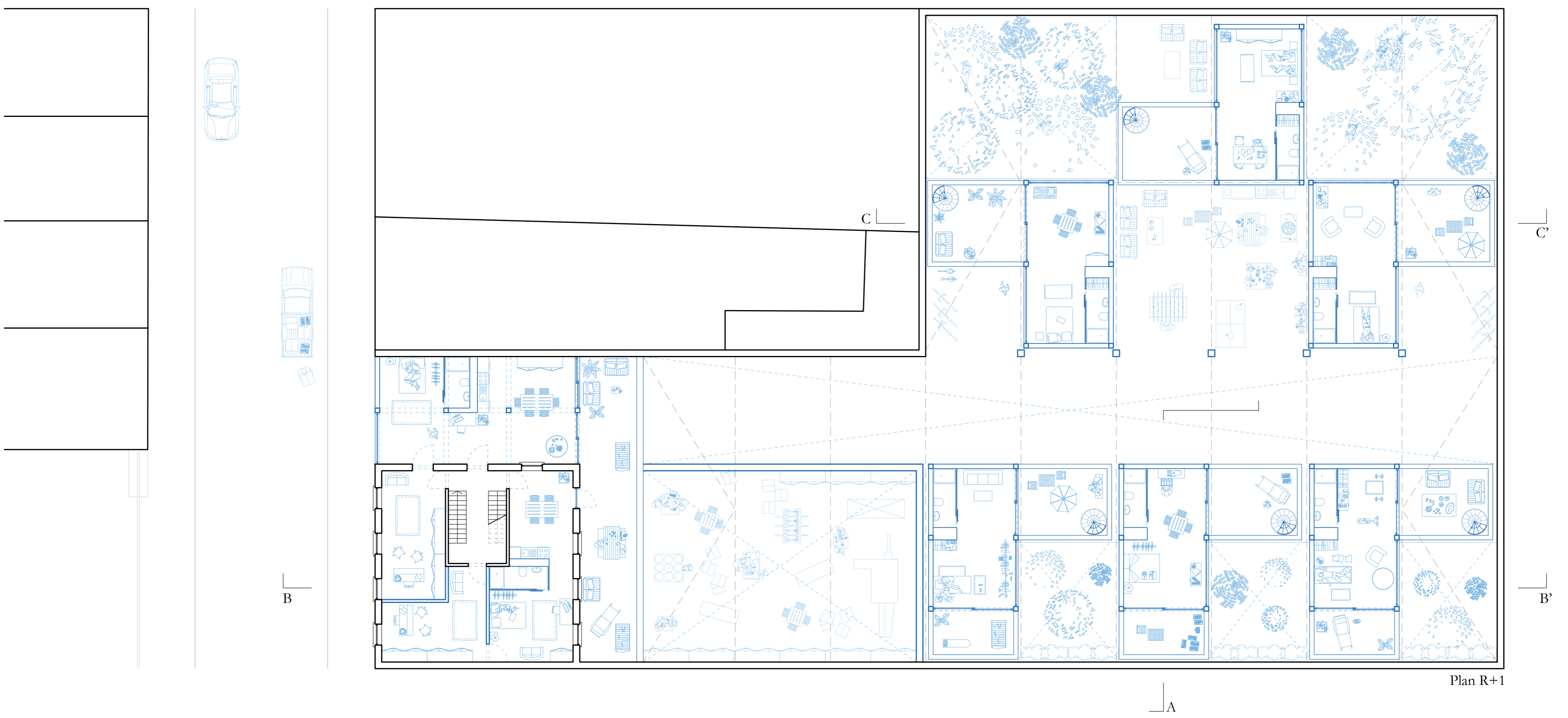
Coupe BB'



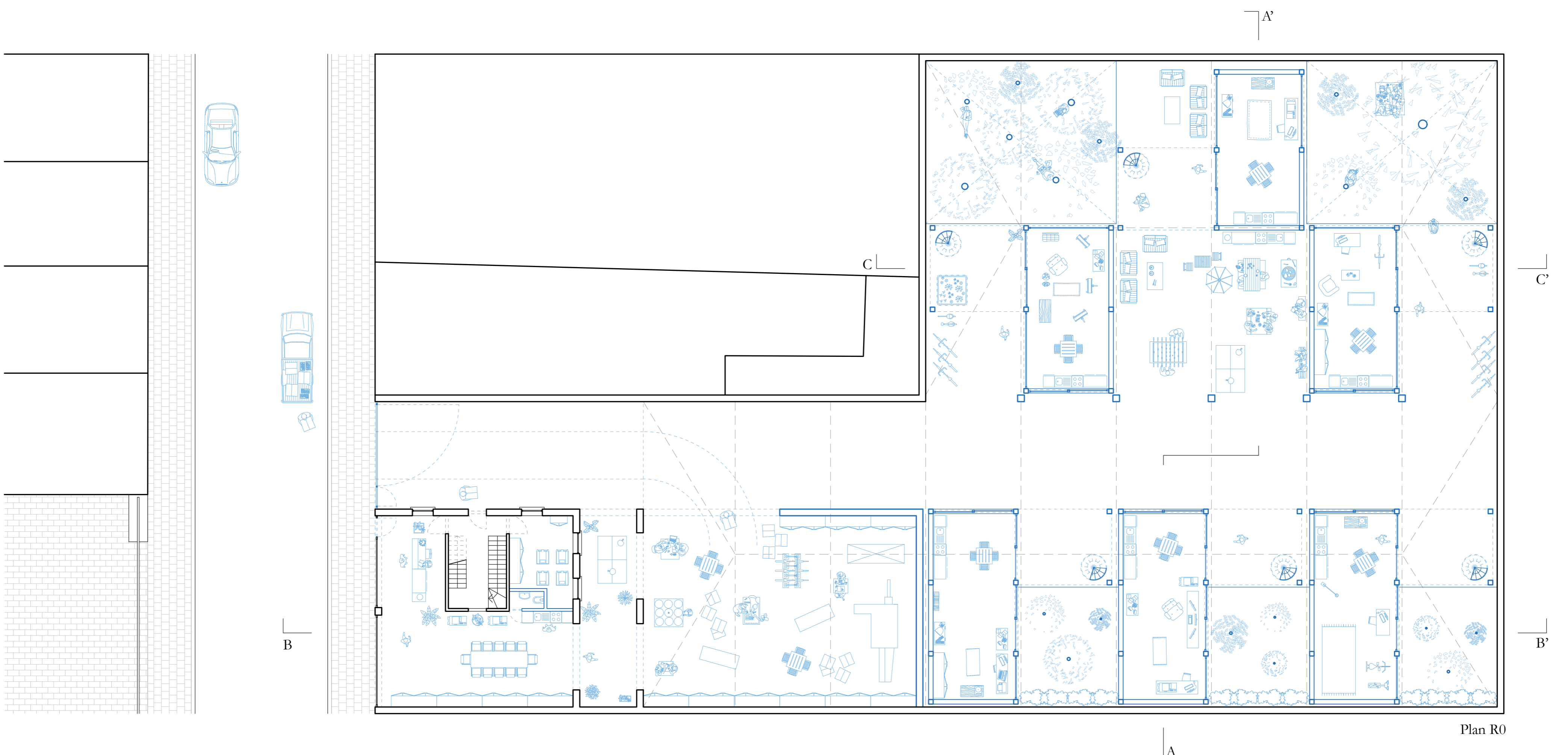
Coupe AA'



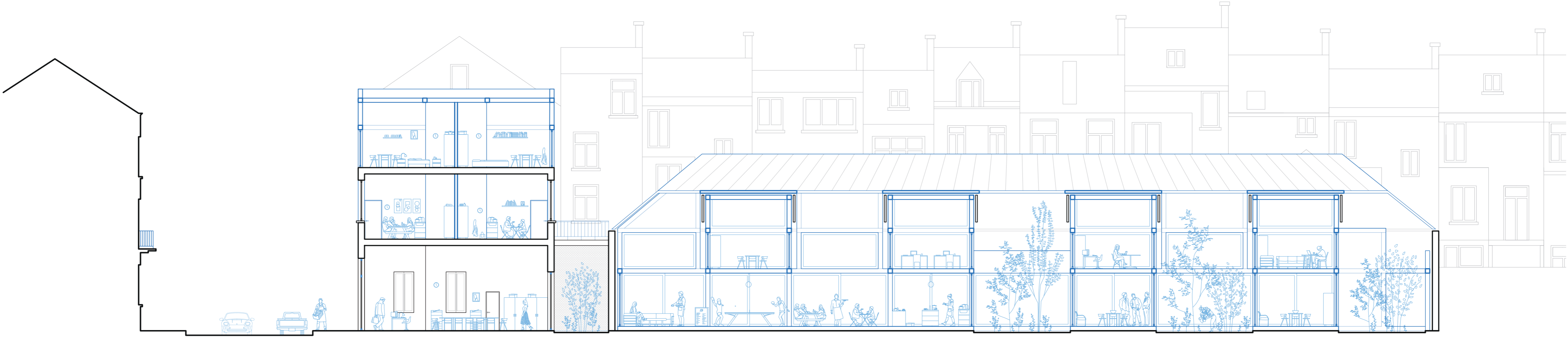
Coupe CC'



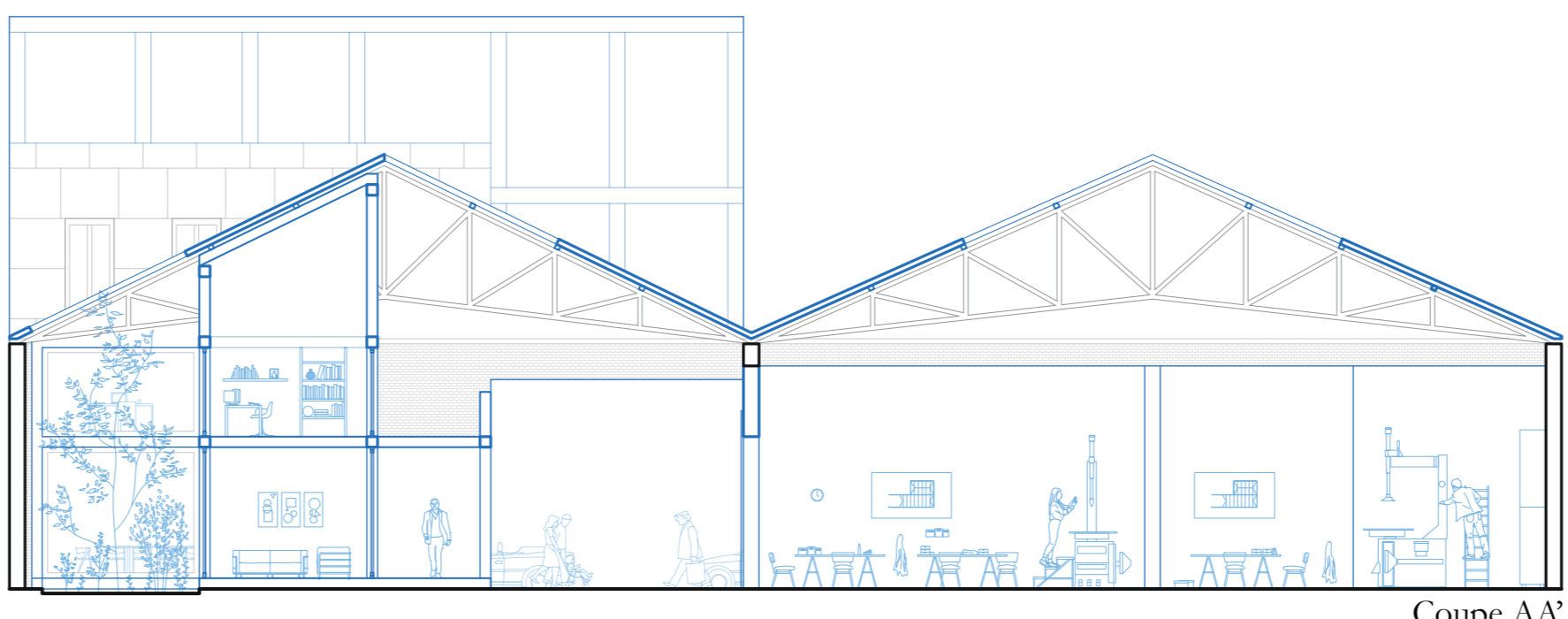
Plan R+1



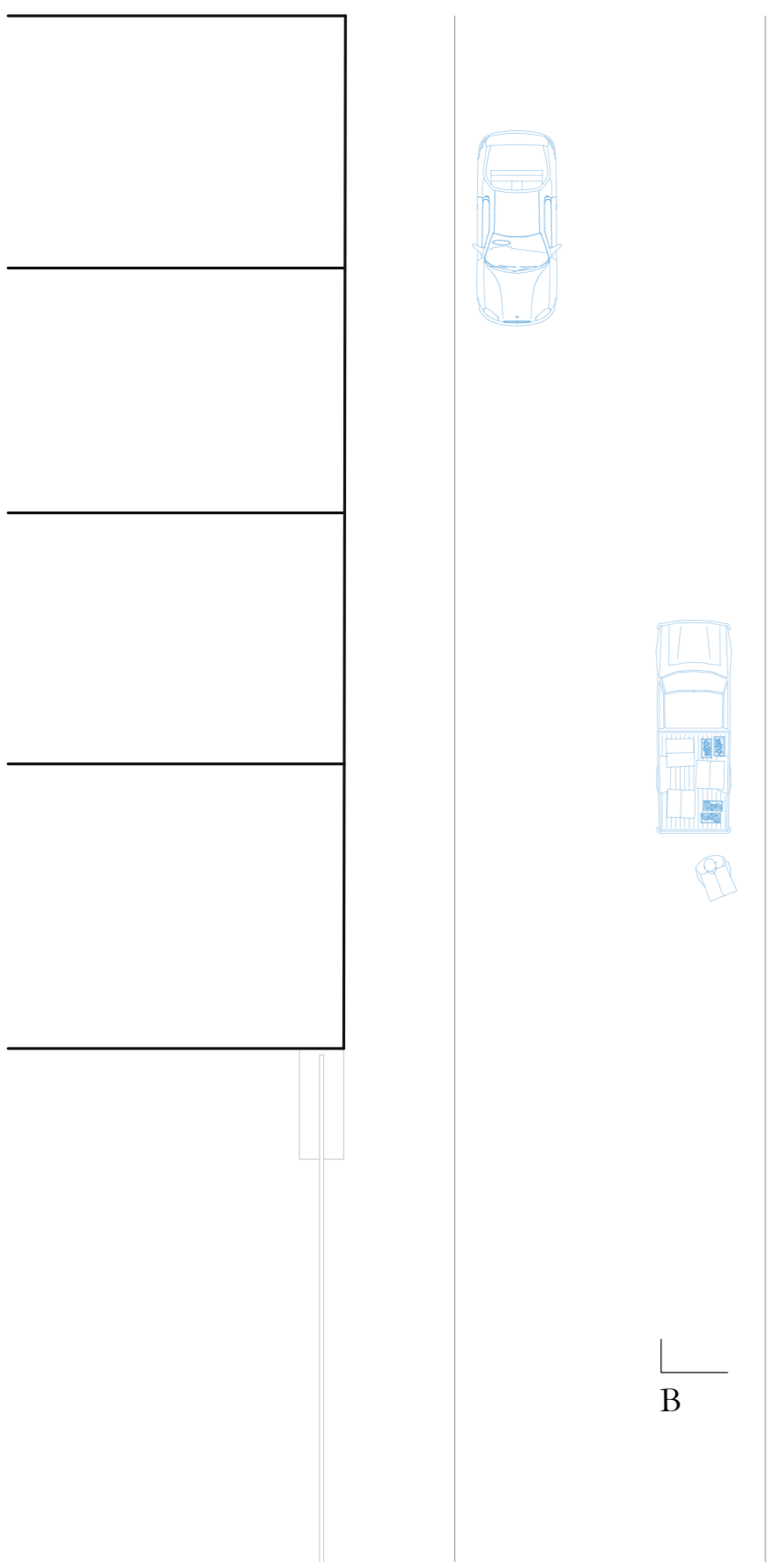
Plan R0



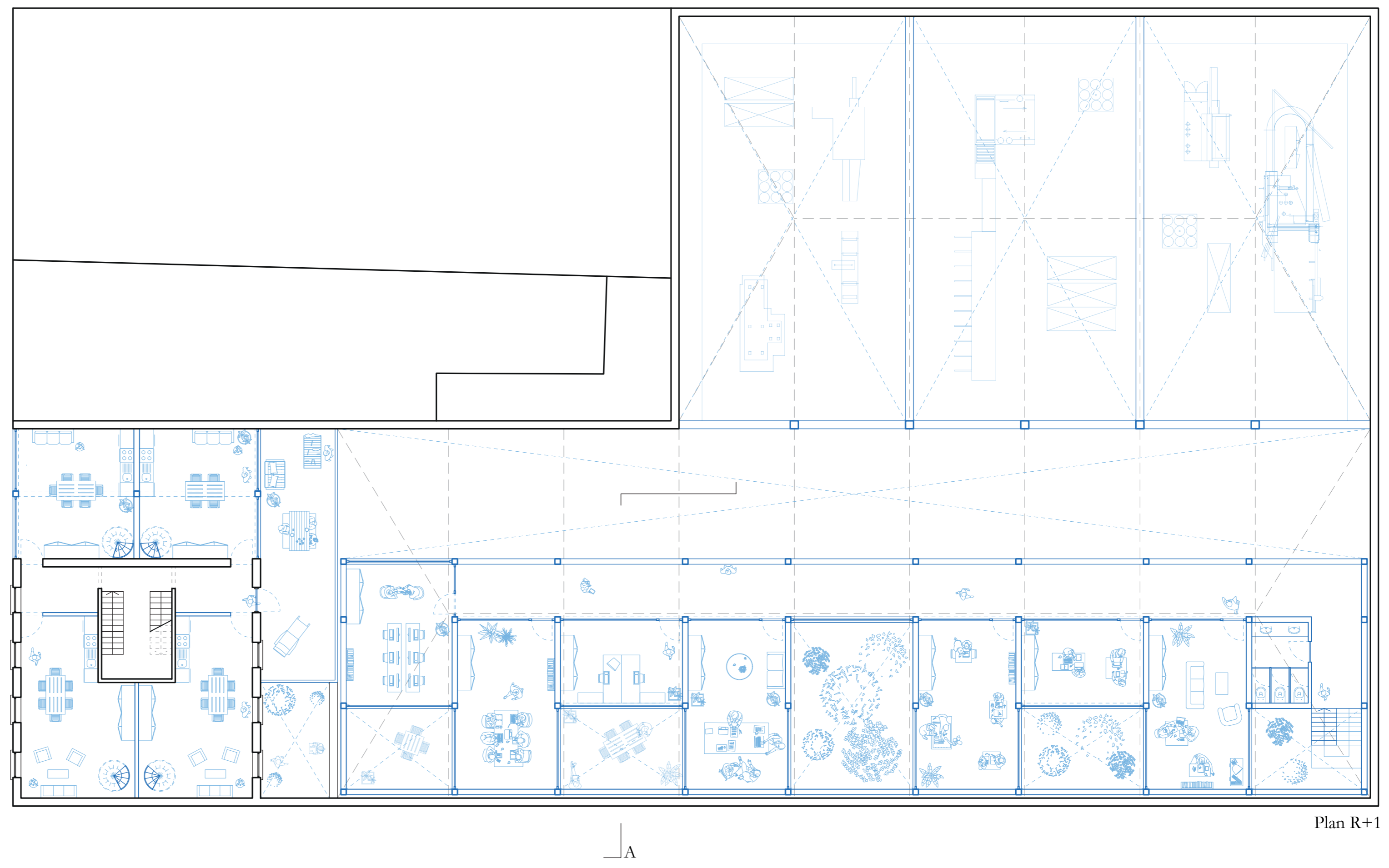
Coupe BB'



Coupe AA'

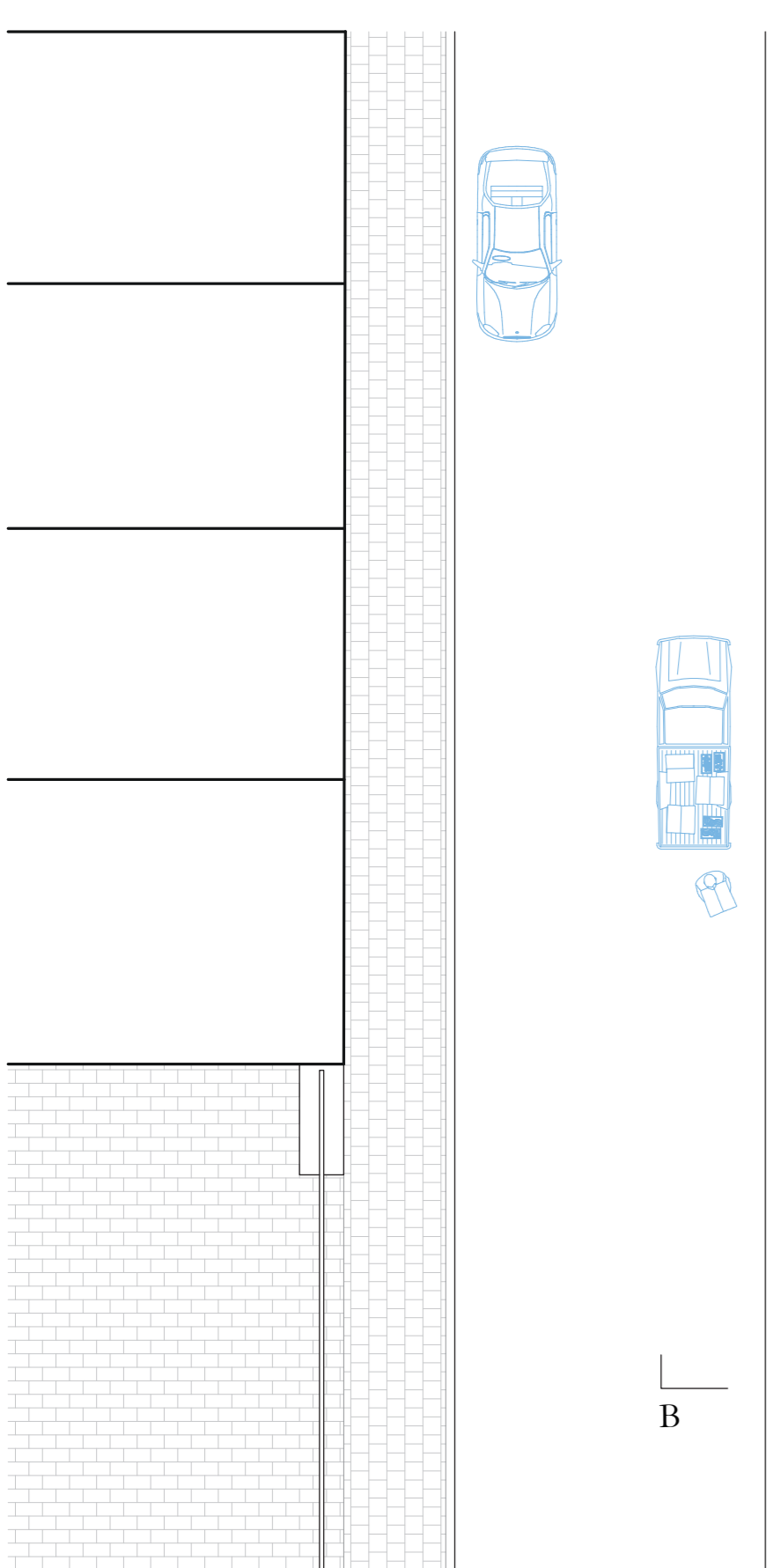


B

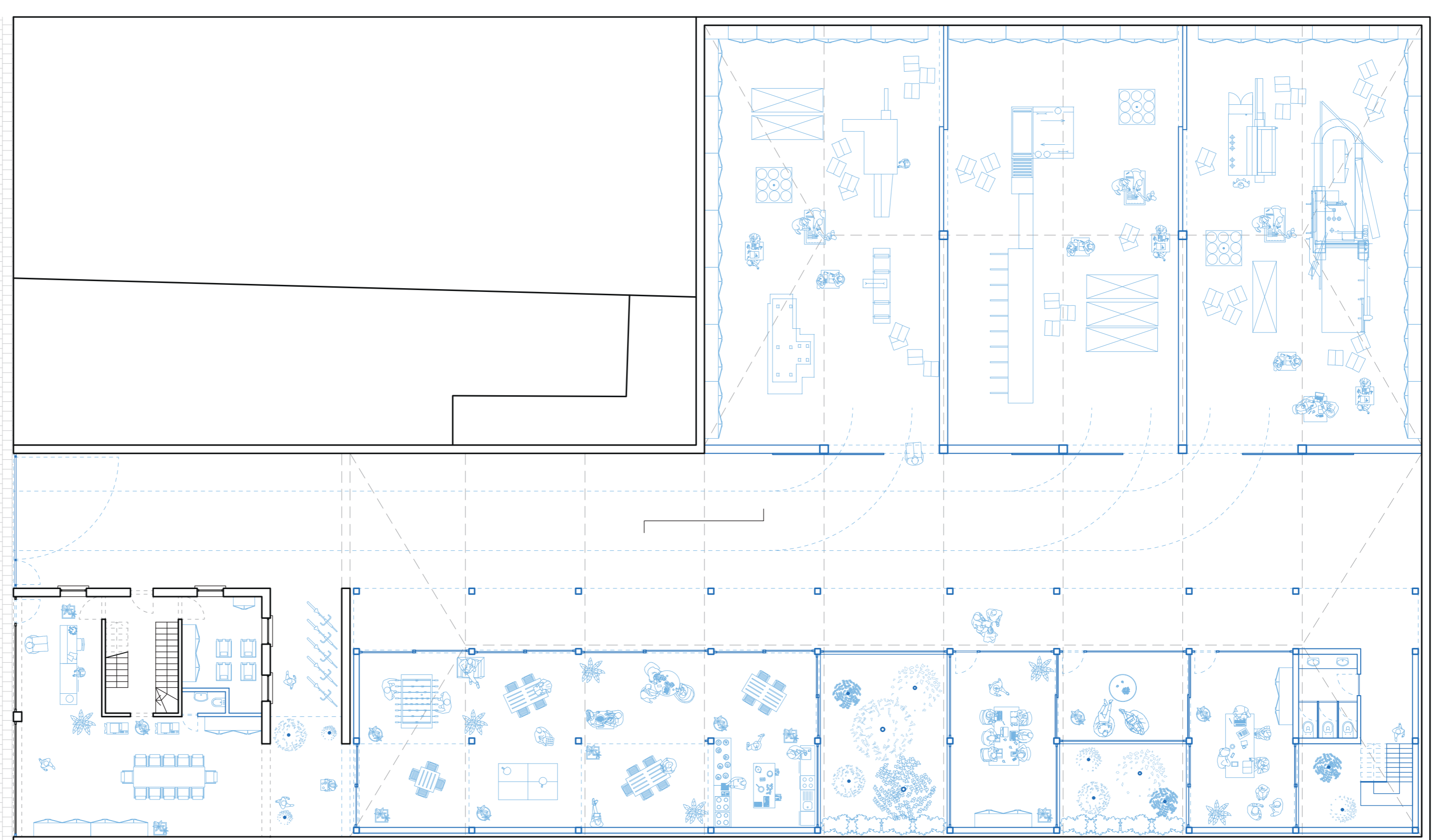


Plan R+1

A



B



Plan R0

A

**CO-LIVING/WORKING**

Atelier de recherche : Typologies | UCL - Loci - Bruxelles | 2023-2024  
Porlier Arthur





**Photo de maquette**

## Aggrandir



Ajuster la hauteur de l'édifice à celle des immeubles voisins.

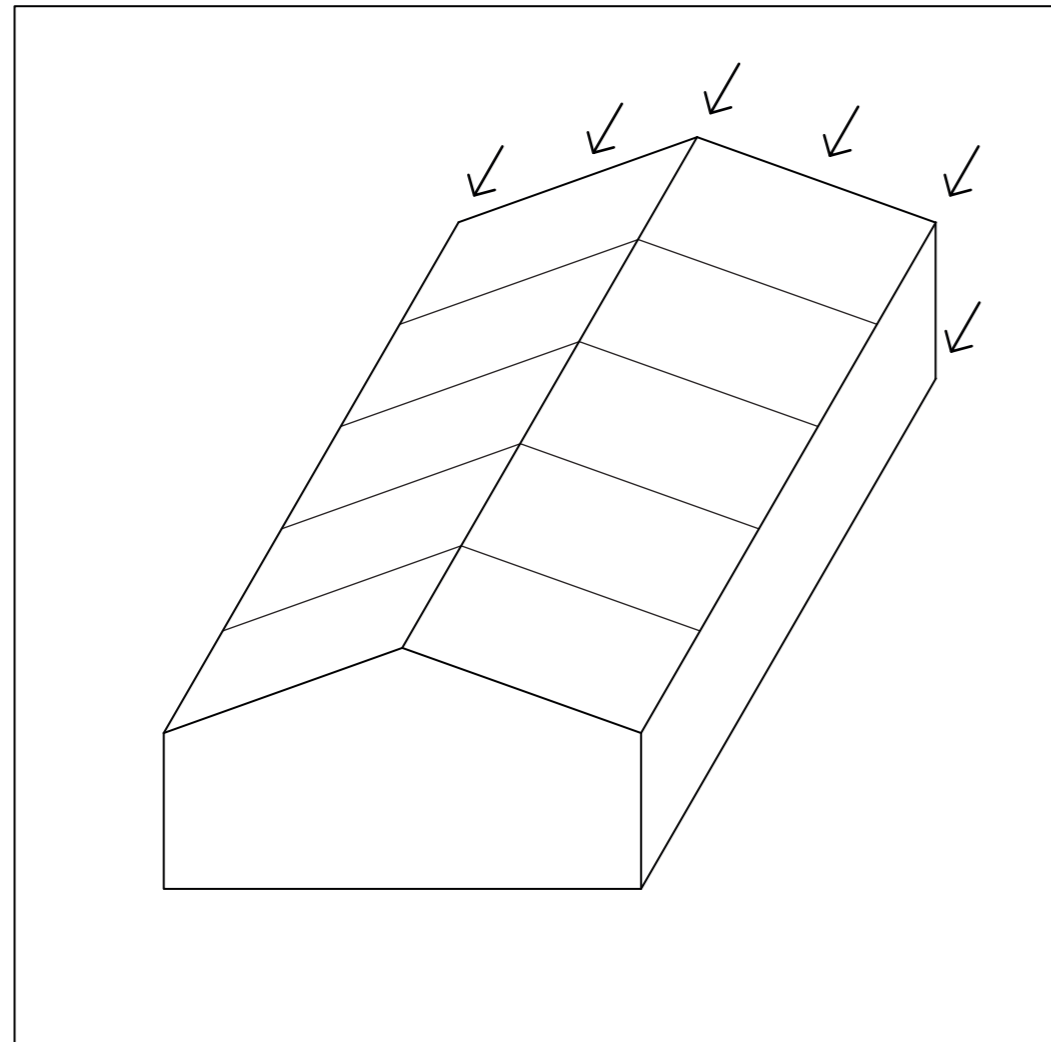


Création d'une structure indépendante de celle existante.

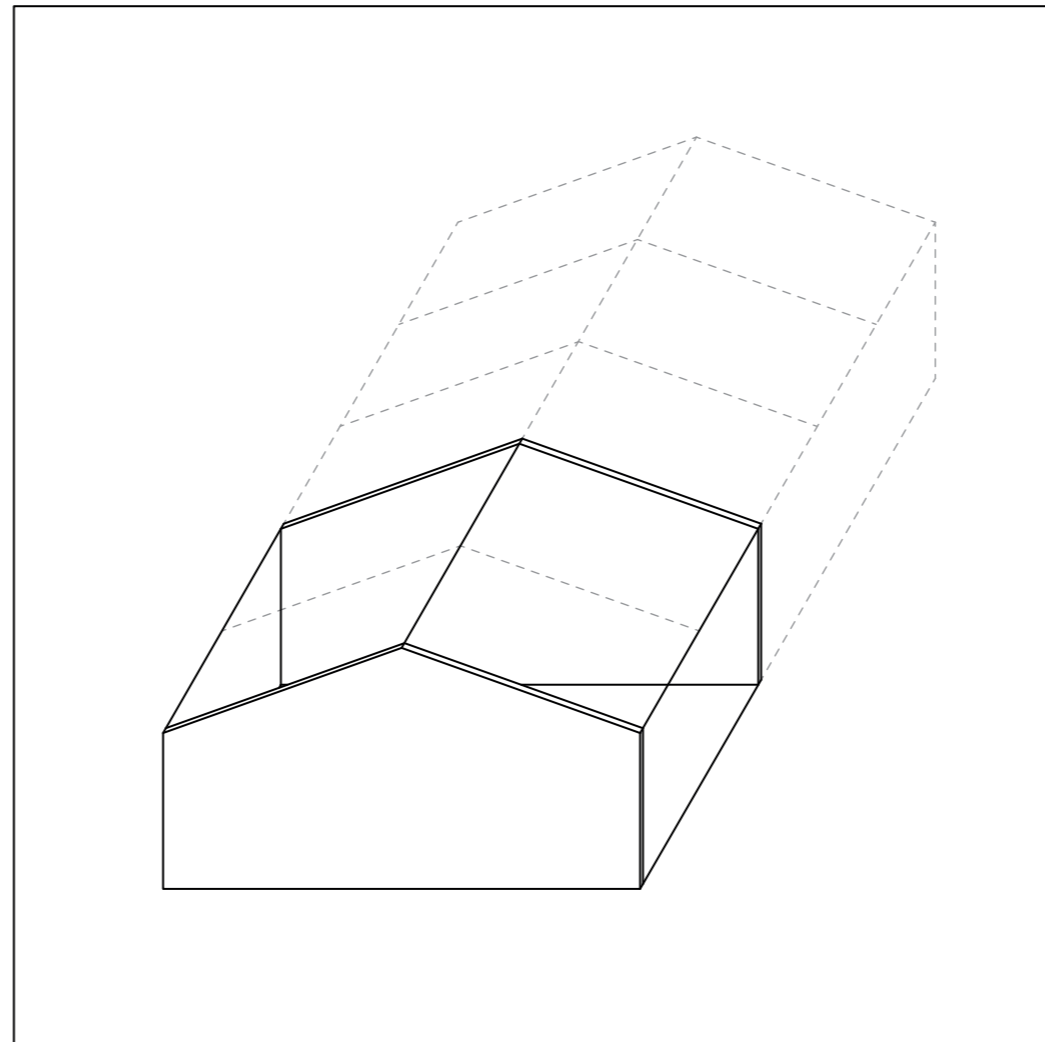


Mixer les usages au sein du nouveau volume créé  
Garder un socle productif et mélanger une profession avec un logement aux étages.

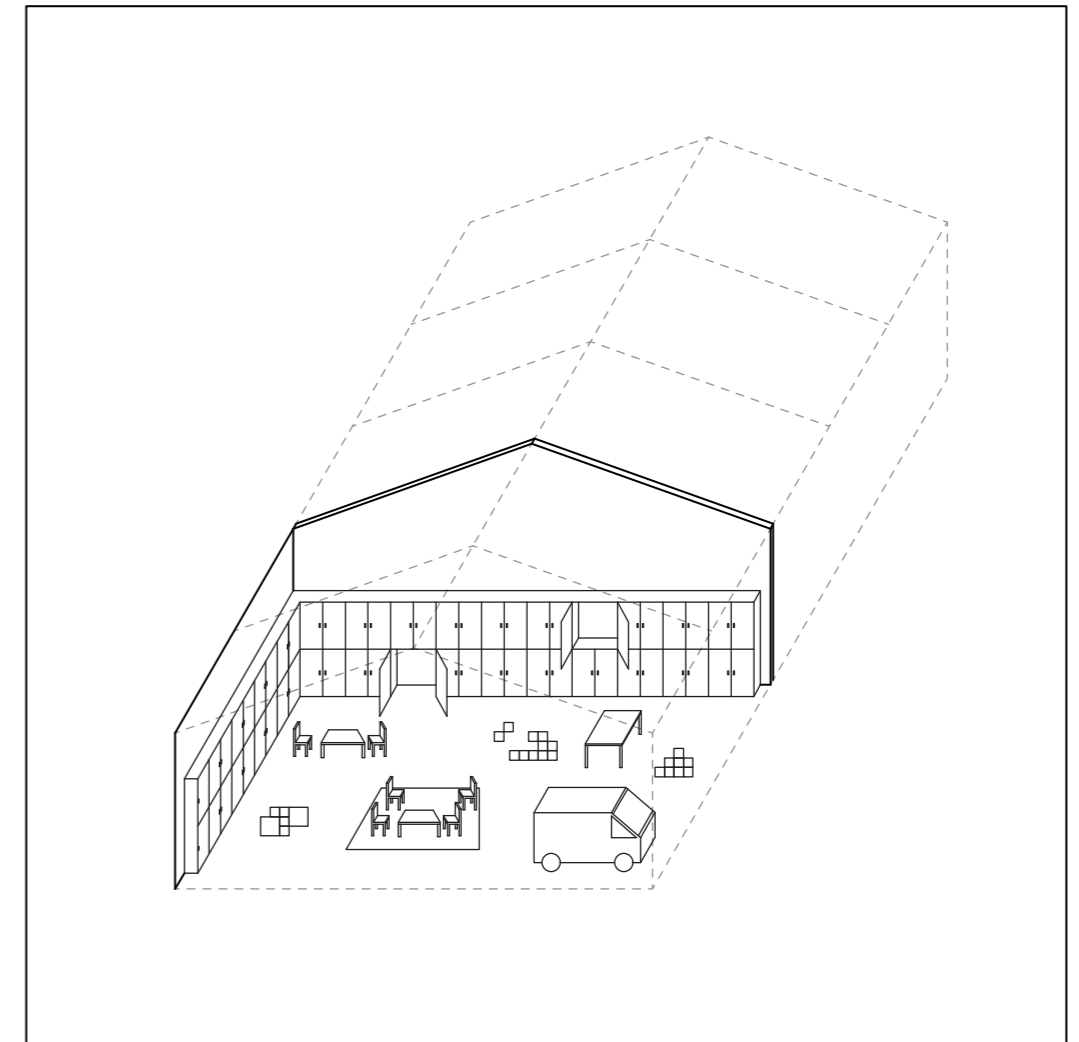
## Réduire



Réduire Les lieux de productions bruyant au sein de l'édifice.

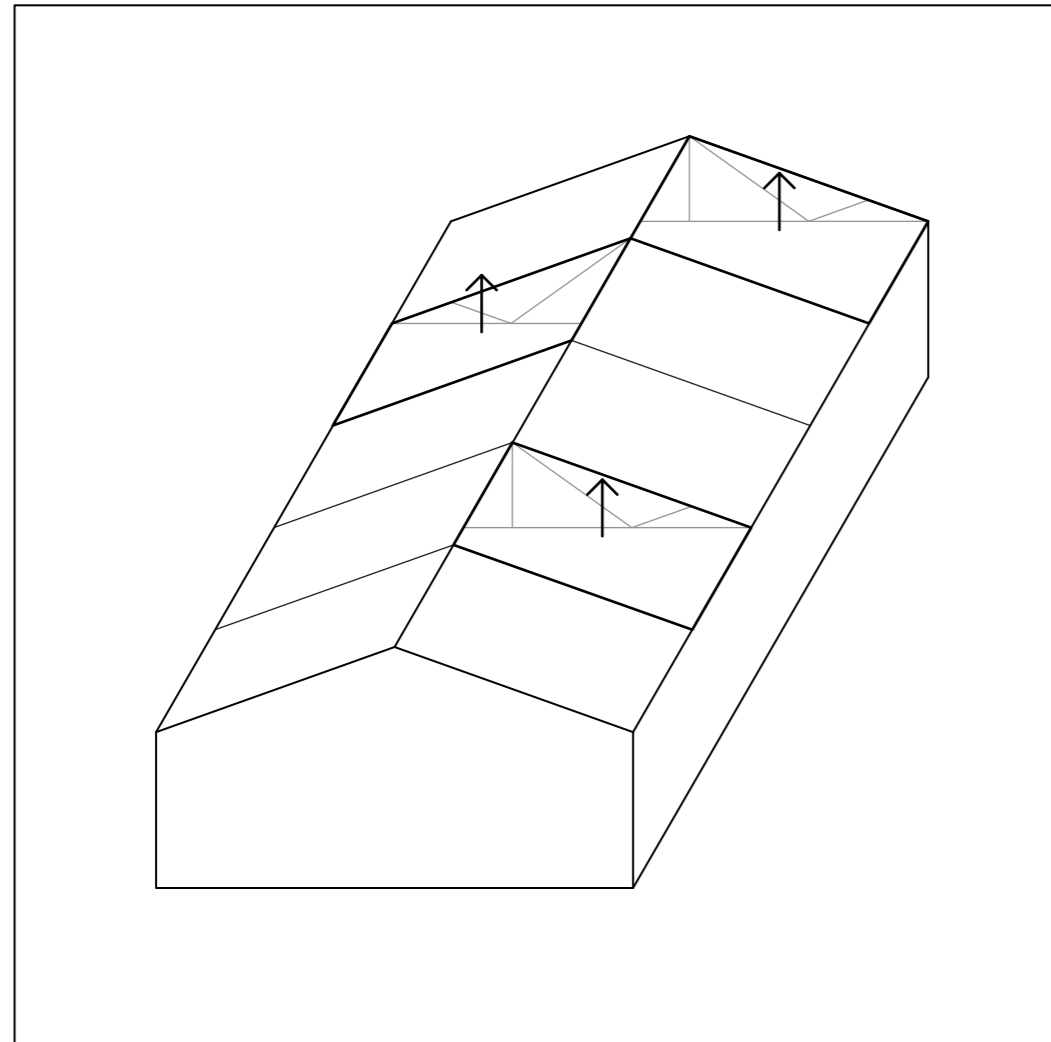


Isoler ces espaces du reste du bâtiment via des structures lourdes indépendantes.

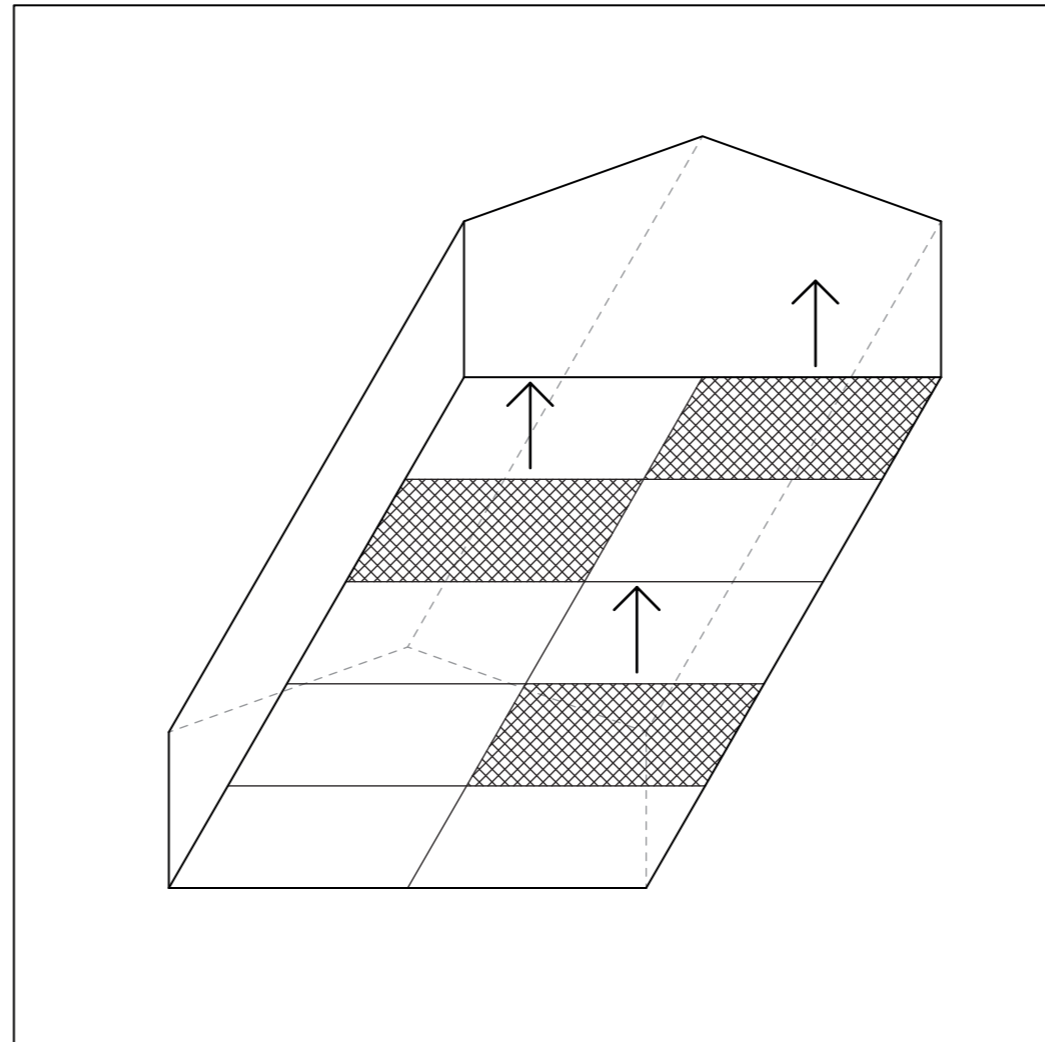


Implanter de nouvelles fonctions productives plus diverses et à plus petite échelle au sein de la ville à petite échelle.  
Ajouter des rangements au bord de ces lieux productifs afin de minimiser les bruits et les échos.

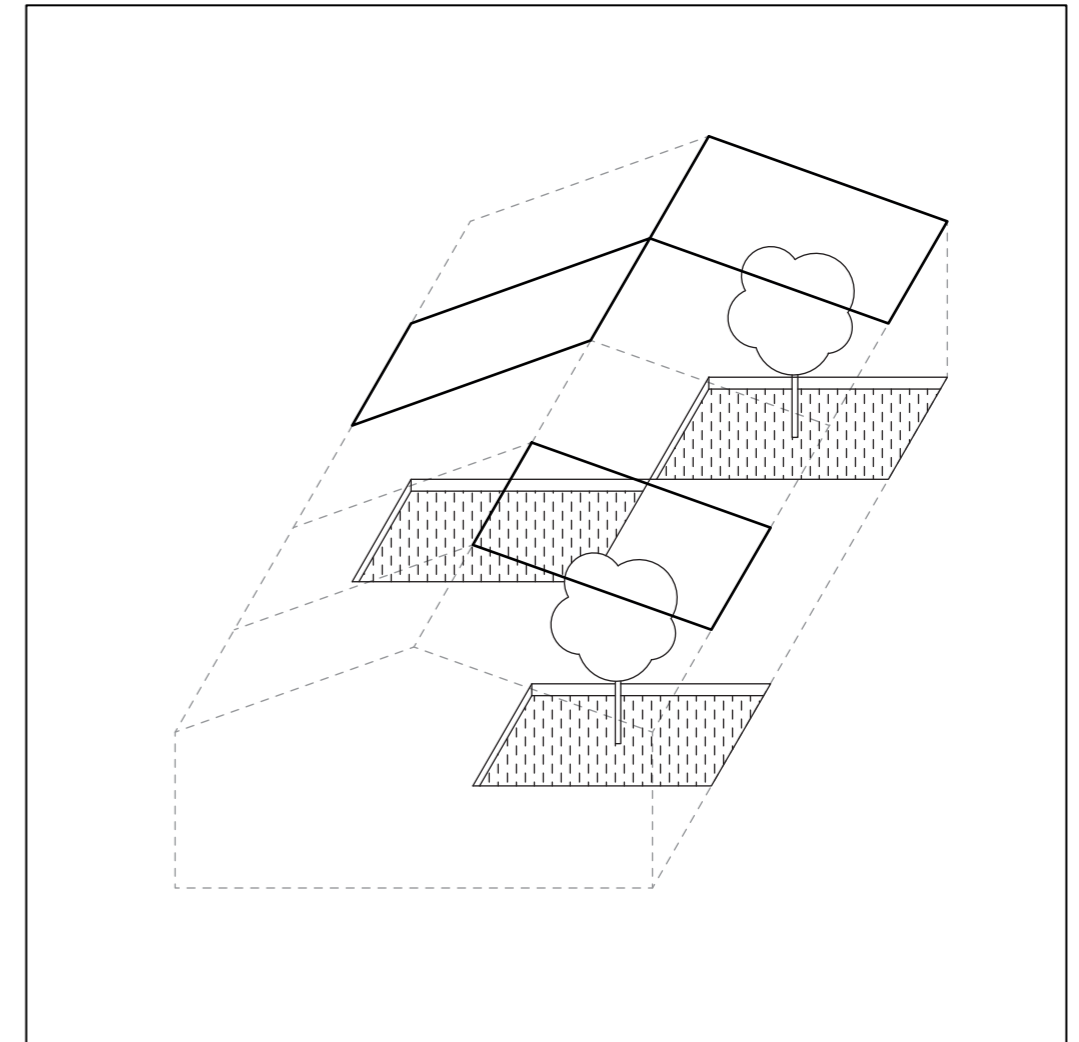
## Retirer



Retirer des sections du toit afin d'apporter de la lumière au sein du bâtiment.

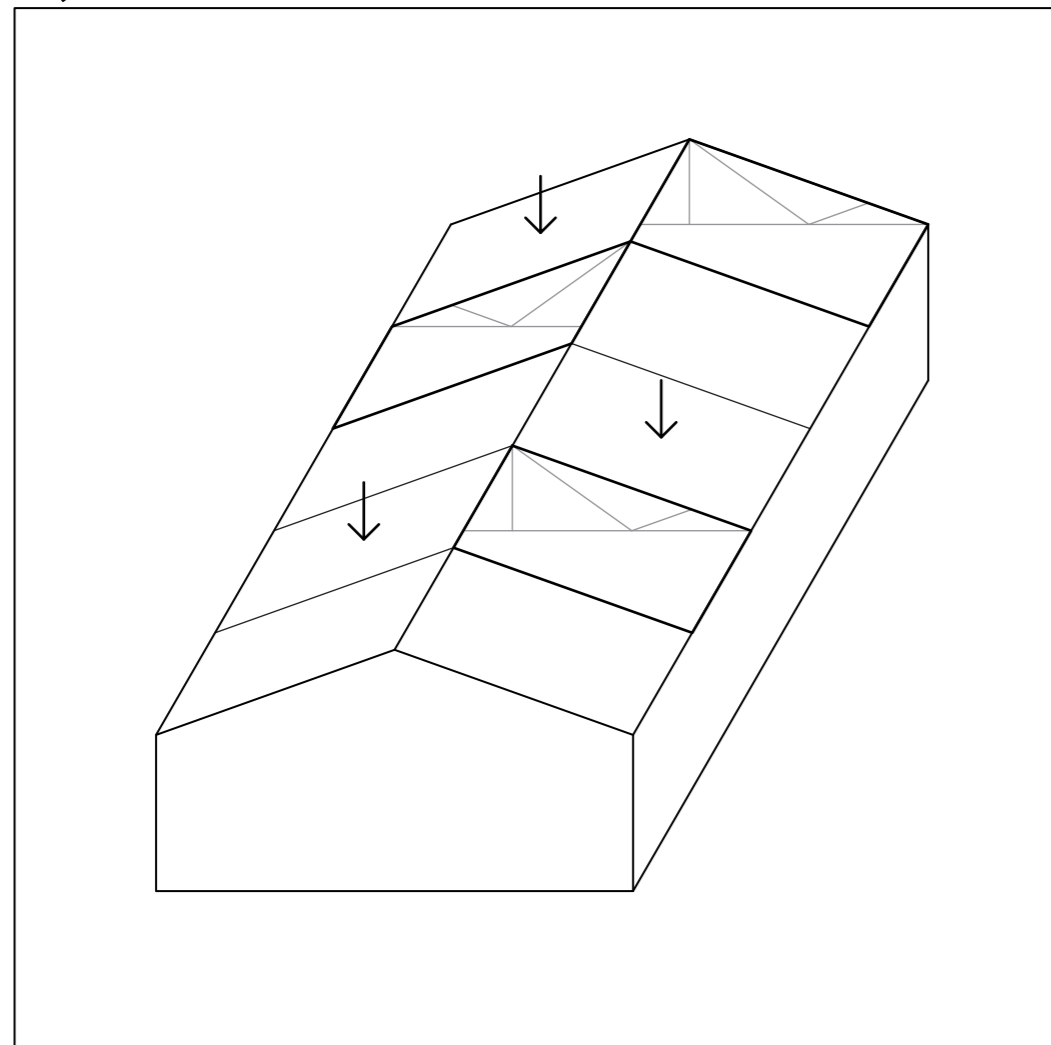


Déminéraliser des sections de sol.

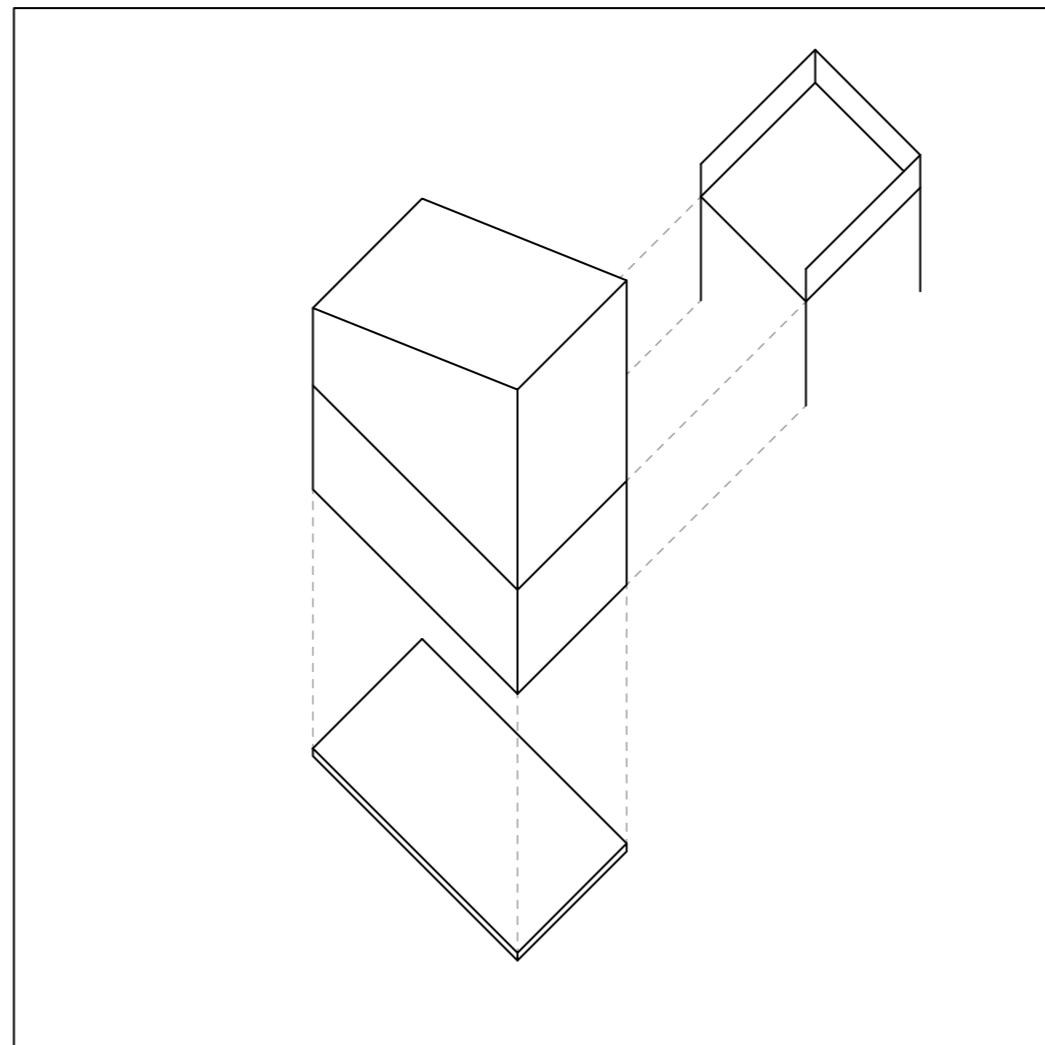


Création de patio alliant les nouvelles zones déminéralisées et illuminées.

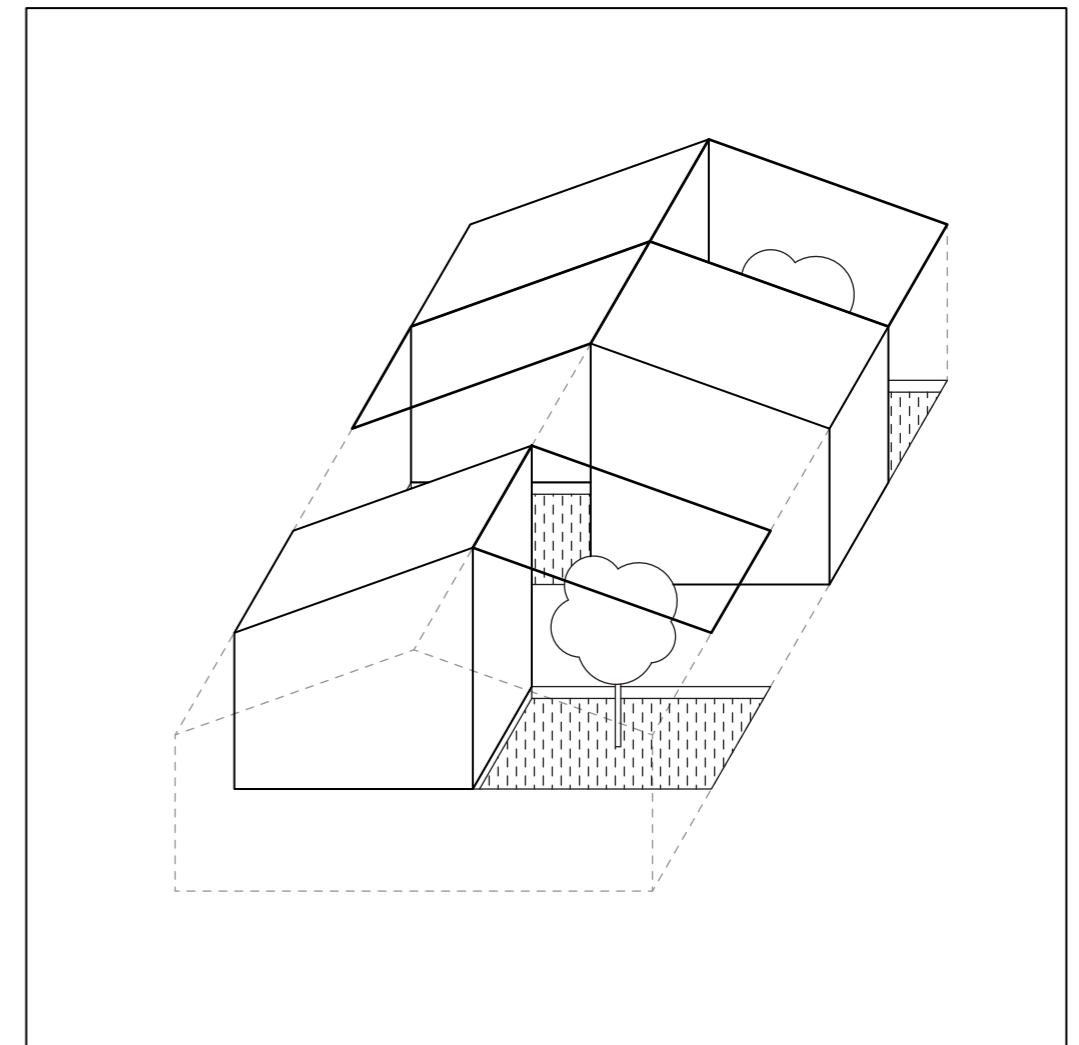
## Ajouter



Ajouter des modules au sein de l'immeuble en profitant de toute la hauteur.



Les modules sont séparés du sol par un plancher sur le sol bétonné et auquel on ajoute des parties de terrasses qui profite de la toiture penchée pour s'ouvrir.



Ces modules s'organisent autour des patios afin de profiter de l'ambiance et la lumière générée.