



UNIVERSITÉ CATHOLIQUE DE LOUVAIN

---

LINGI2990  
TRAVAIL DE FIN D'ÉTUDES

---

# Optimizing the delivery of prepared meals

## Appendix

---

*Student:*

Guillaume MASSIN (3022-08-00)

*Teacher:*

Yves DEVILLE

*Readers:*

(Jean-Baptiste MAIRY)

François AUBRY

Michael SAINT-GUILLAIN

August 17, 2015

# Chapter 1

## Appendices

### 1.1 Graphs for the initial solutions

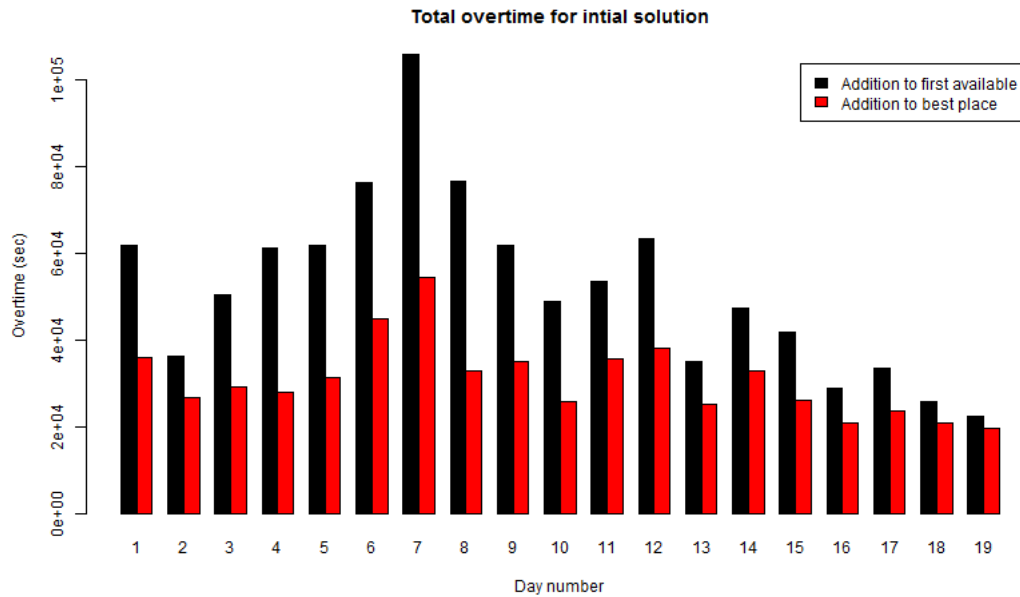


Figure 1.1: Summary of overtime for initial static solutions for the two methods

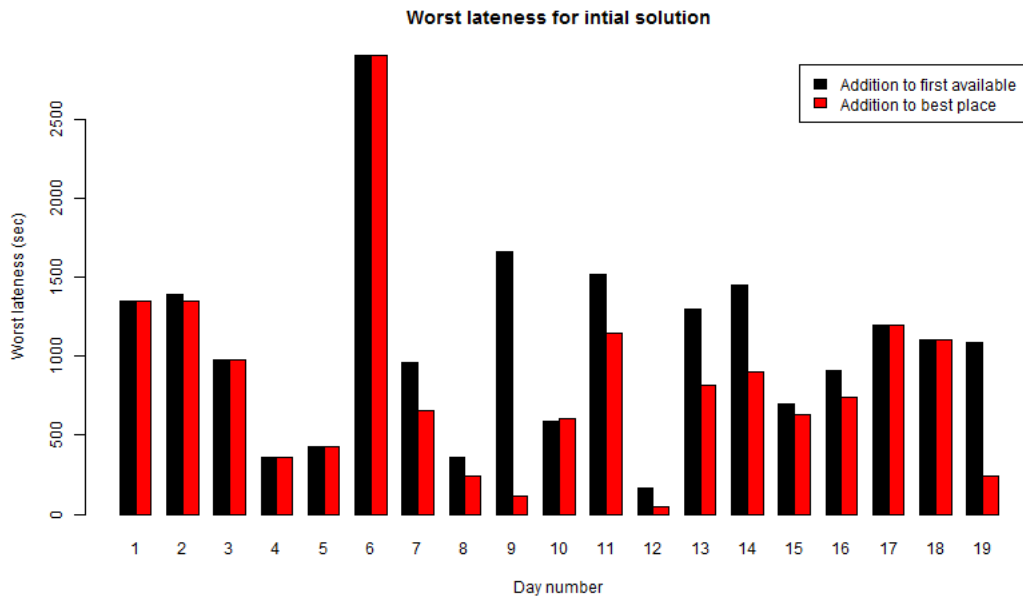


Figure 1.2: Summary of worst latenesses for initial static solutions for the two methods

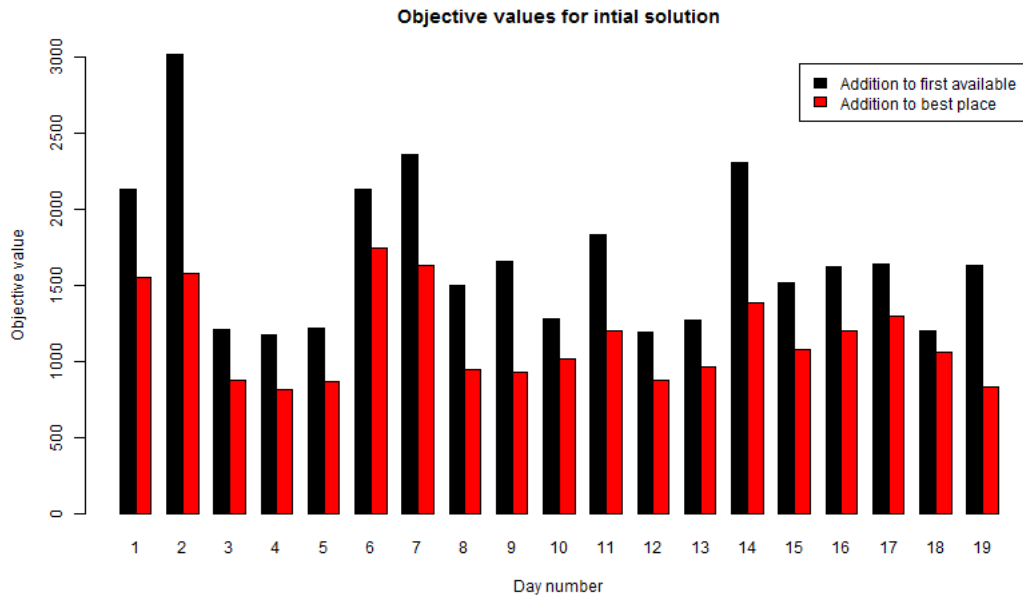


Figure 1.3: Summary of objective value for initial static solutions for the two methods

## 1.2 Graphs for the tabu influence for day 1 for all search methods

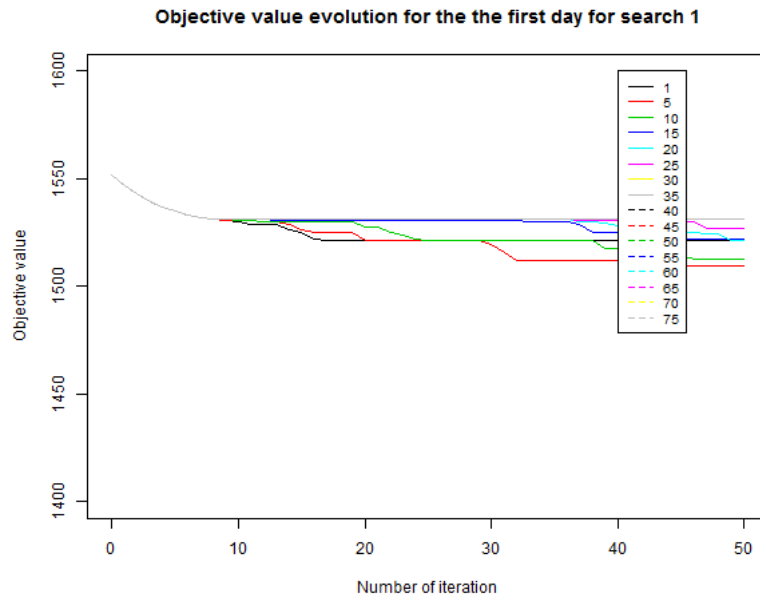


Figure 1.4: Evolution of the objective value for day one for several tabu percentages for search 1

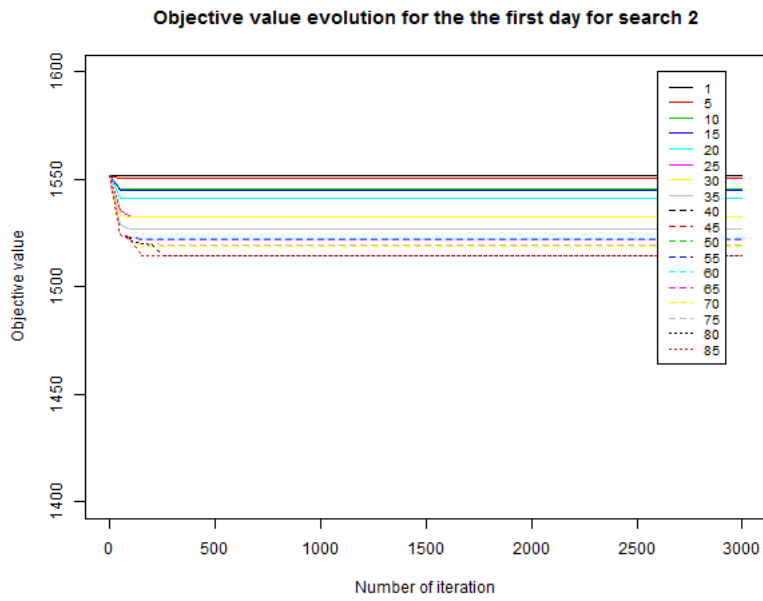


Figure 1.5: Evolution of the objective value for day one for several tabu percentages for search 2

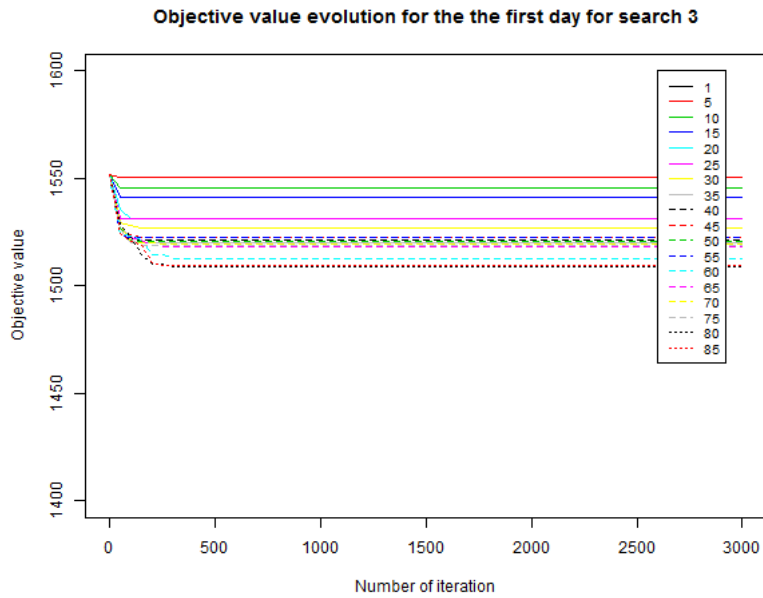


Figure 1.6: Evolution of the objective value for day one for several tabu percentages for search 3

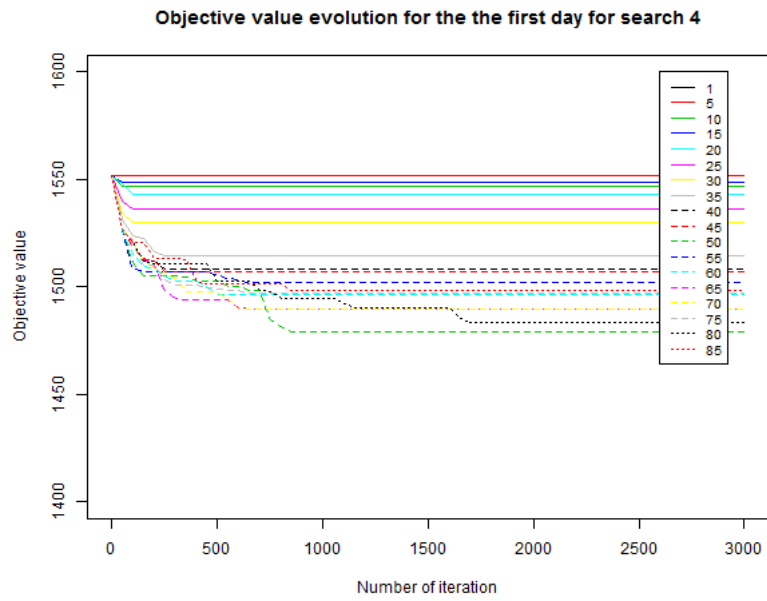


Figure 1.7: Evolution of the objective value for day one for several tabu percentages for search 4

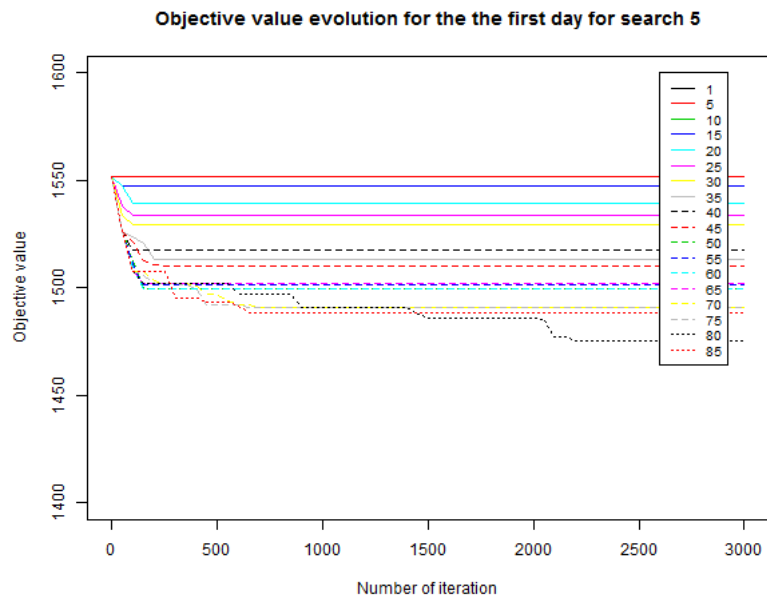


Figure 1.8: Evolution of the objective value for day one for several tabu percentages for search 5

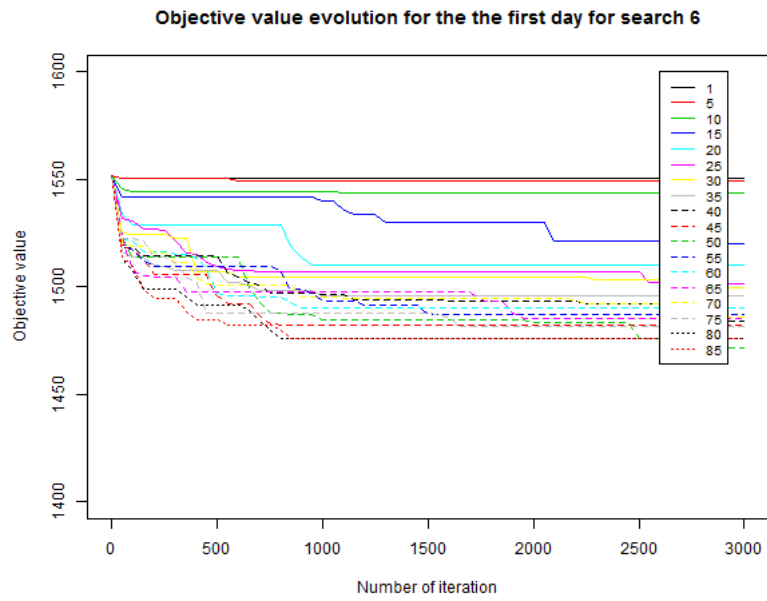


Figure 1.9: Evolution of the objective value for day one for several tabu percentages for search 6

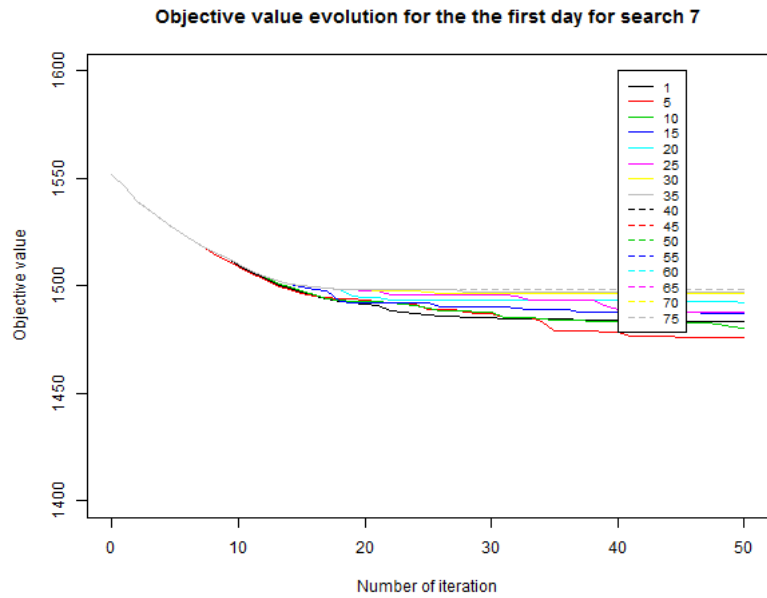


Figure 1.10: Evolution of the objective value for day one for several tabu percentages for search 7

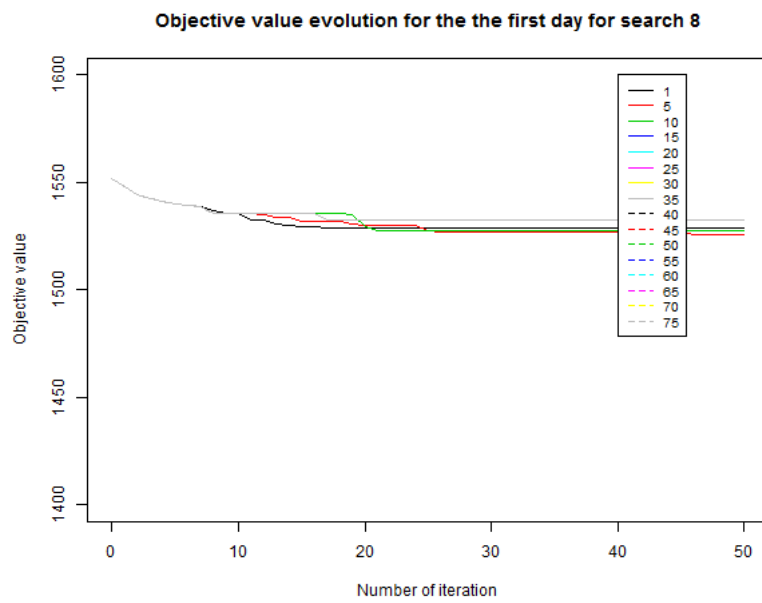


Figure 1.11: Evolution of the objective value for day one for several tabu percentages for search 8

### 1.3 Graphs for the tabu influence for the modified searches 3 to 6

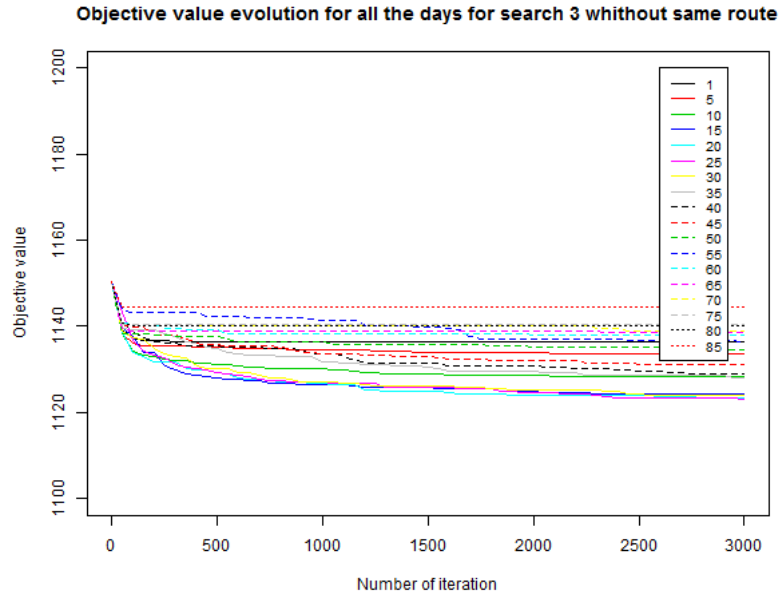


Figure 1.12: Evolution of the objective value for all days for several tabu percentages for search 3 modified

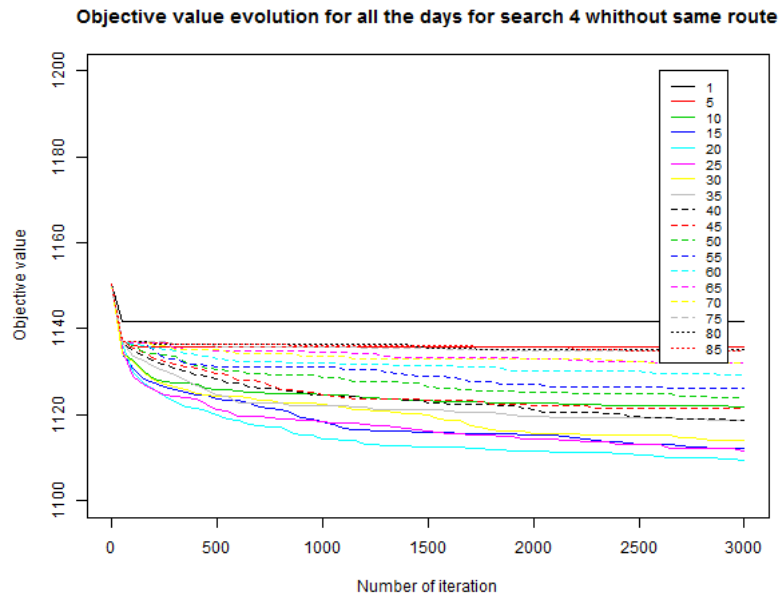


Figure 1.13: Evolution of the objective value for all days for several tabu percentages for search 4 modified

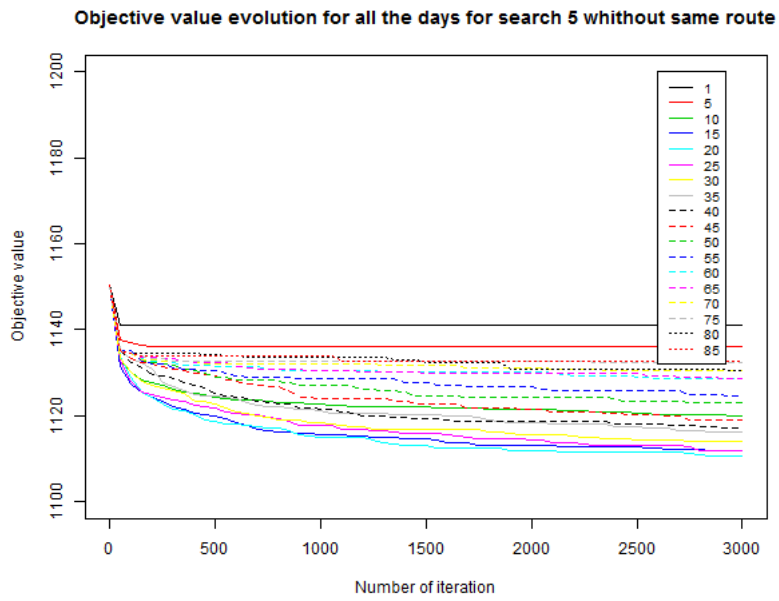


Figure 1.14: Evolution of the objective value for all days for several tabu percentages for search 5 modified

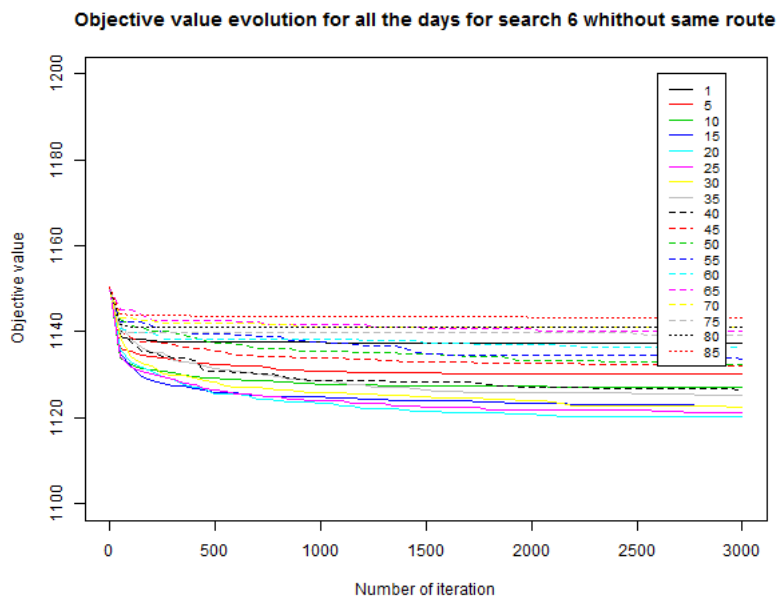


Figure 1.15: Evolution of the objective value for all days for several tabu percentages for search 6 modified

## 1.4 Graphs for the static objective evolutions

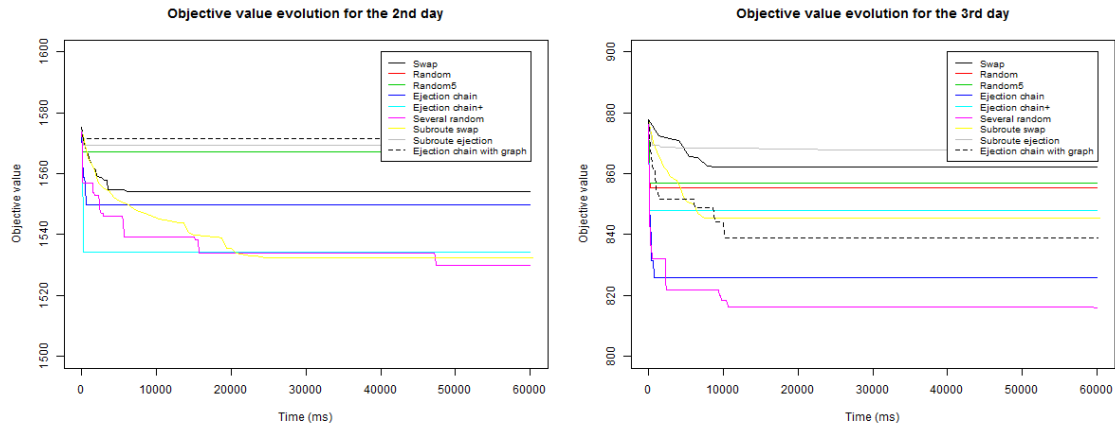


Figure 1.16: Evolution of the objective value for 2 days for the static search methods

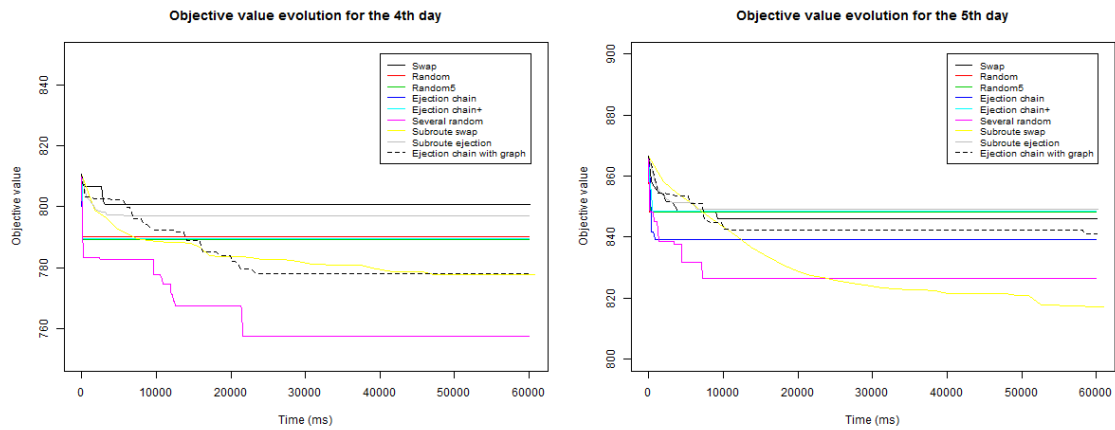


Figure 1.17: Evolution of the objective value for 2 days for the static search methods

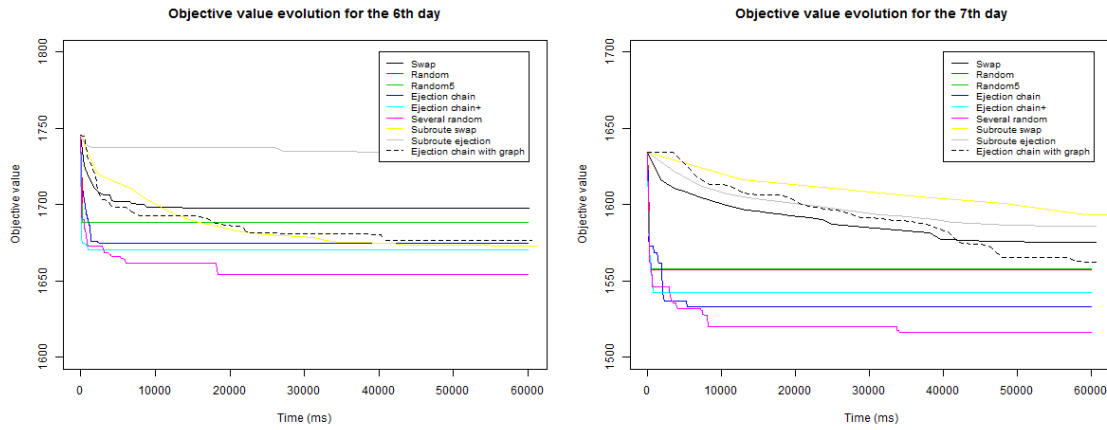


Figure 1.18: Evolution of the objective value for 2 days for the static search methods

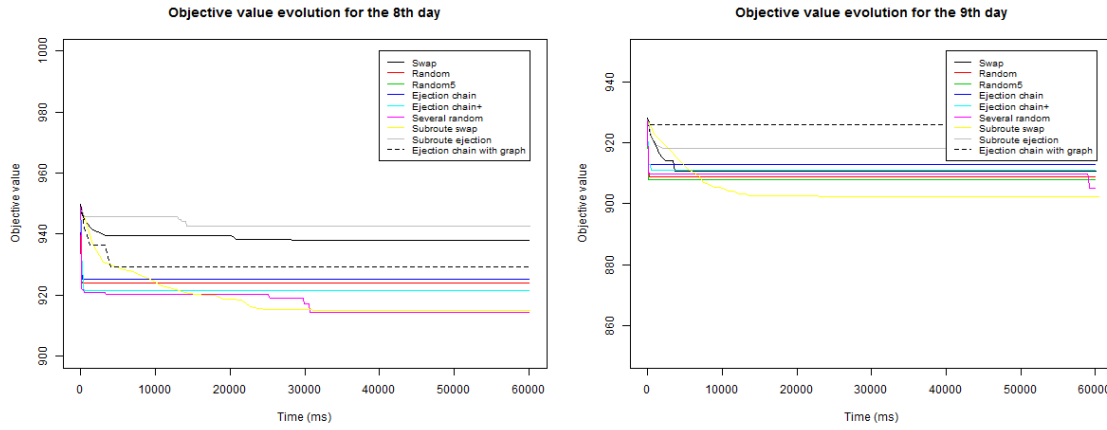


Figure 1.19: Evolution of the objective value for 2 days for the static search methods

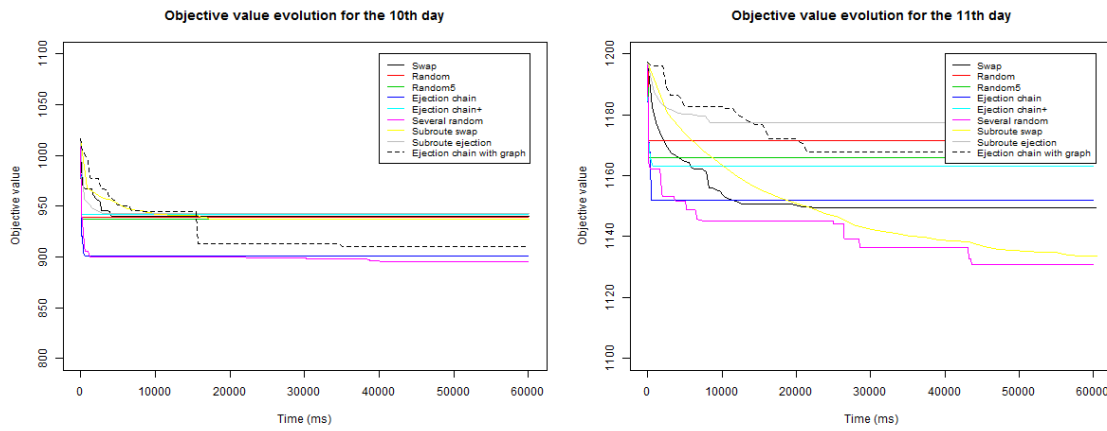


Figure 1.20: Evolution of the objective value for 2 days for the static search methods

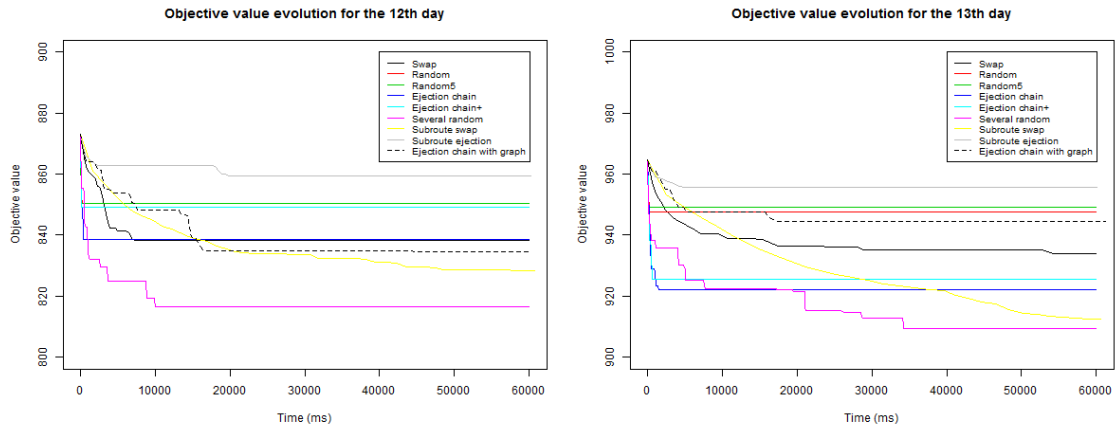


Figure 1.21: Evolution of the objective value for 2 days for the static search methods

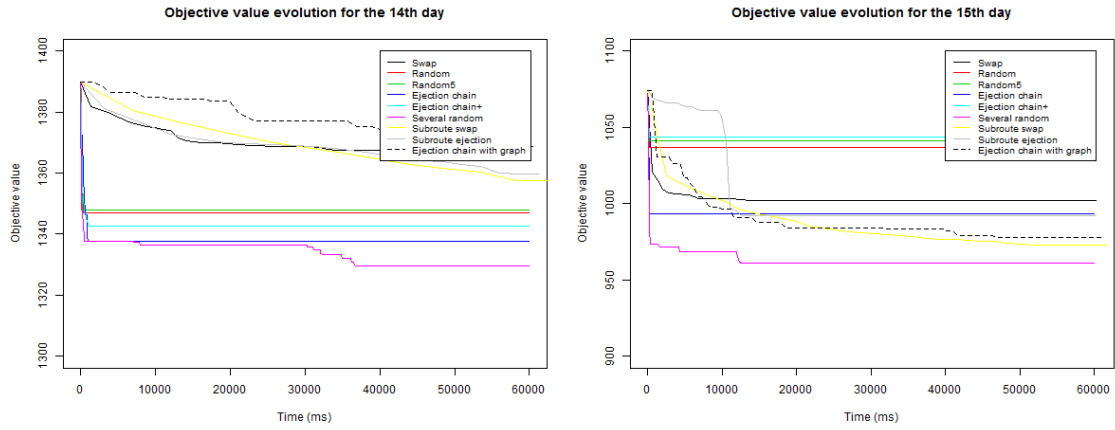


Figure 1.22: Evolution of the objective value for 2 days for the static search methods

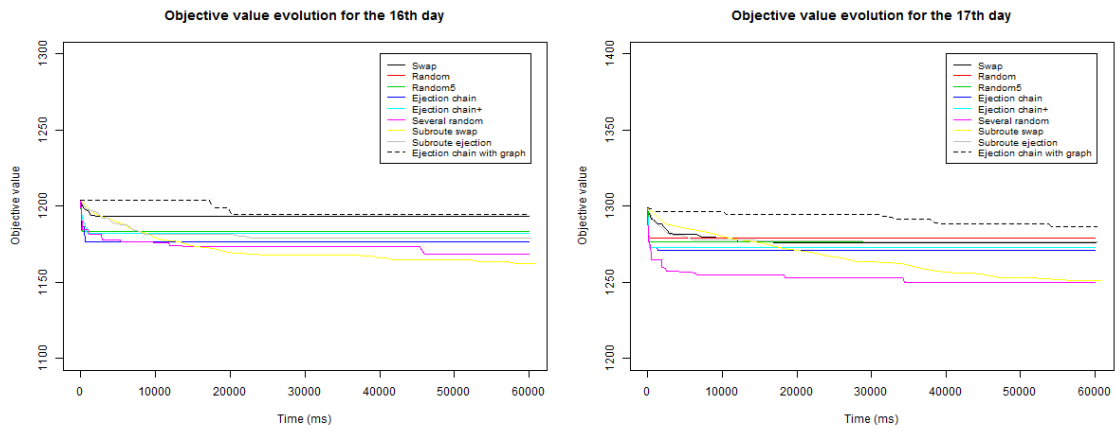


Figure 1.23: Evolution of the objective value for 2 days for the static search methods

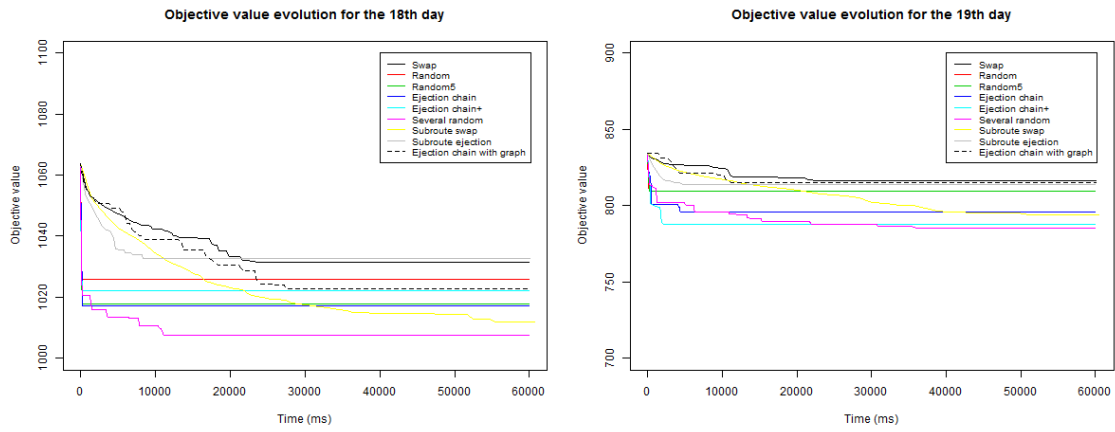


Figure 1.24: Evolution of the objective value for 2 days for the static search methods

## 1.5 Graphs of comparison to the company solution

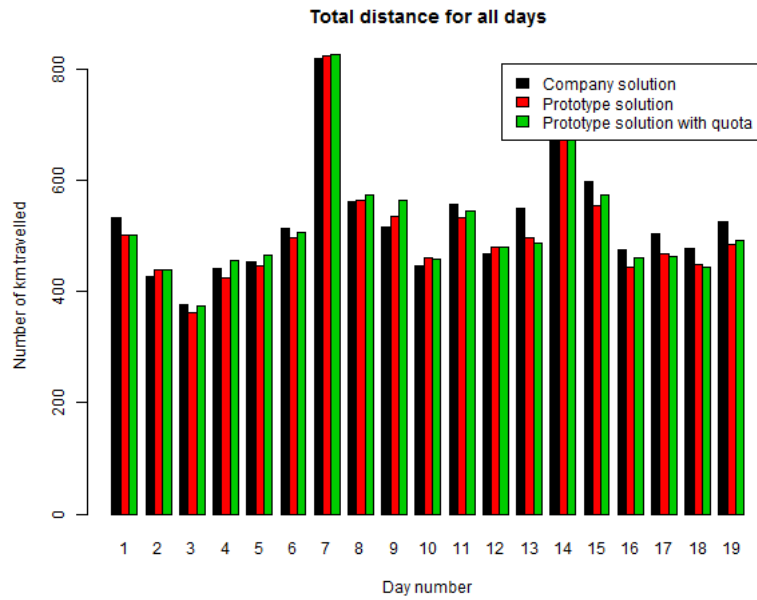


Figure 1.25: Comparison of the total distance of the company solution versus the dynamic results

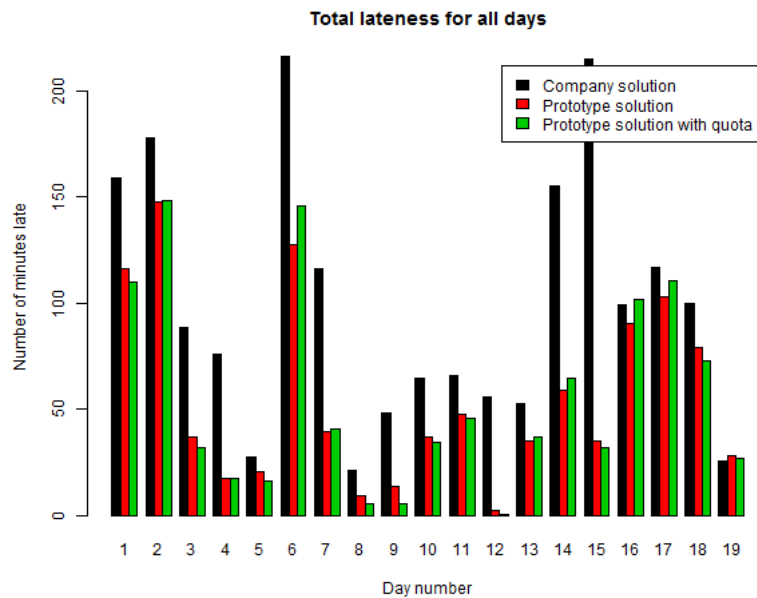


Figure 1.26: Comparison of the total lateness of the company solution versus the dynamic results

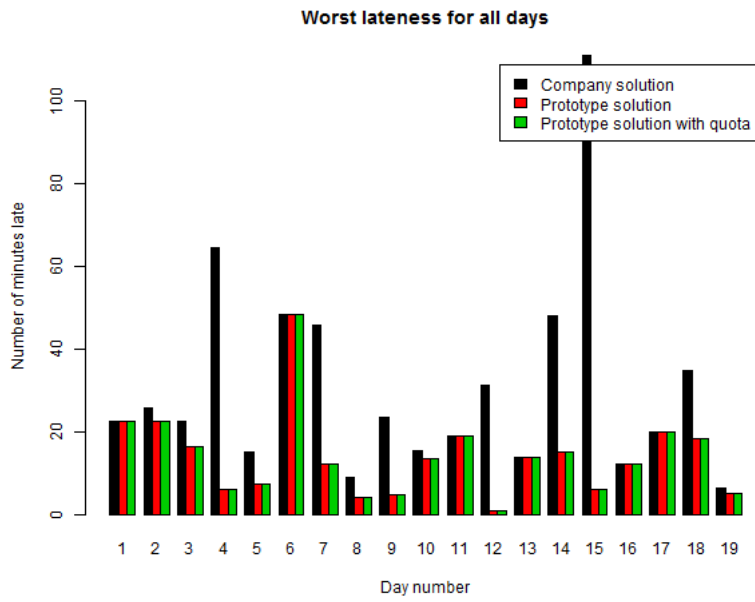


Figure 1.27: Comparison of the worst lateness for an order of the company solution versus the dynamic results

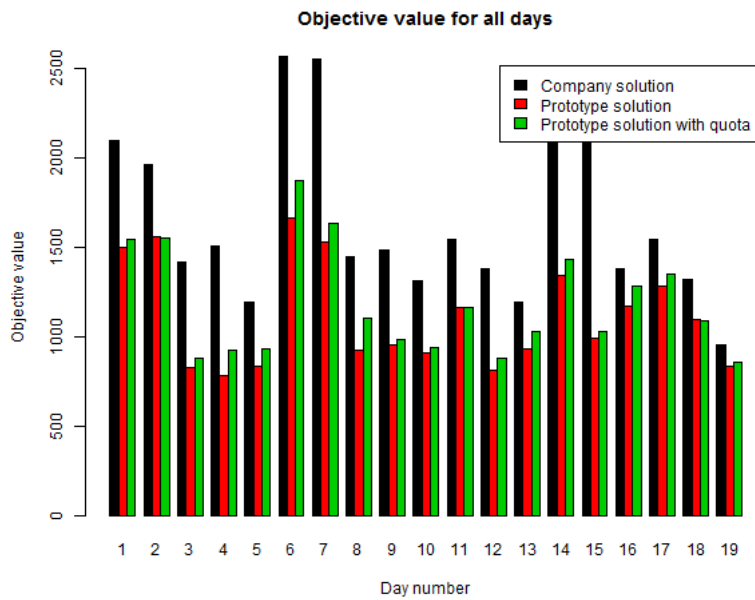


Figure 1.28: Comparison of the objective value for an order of the company solution versus the dynamic results

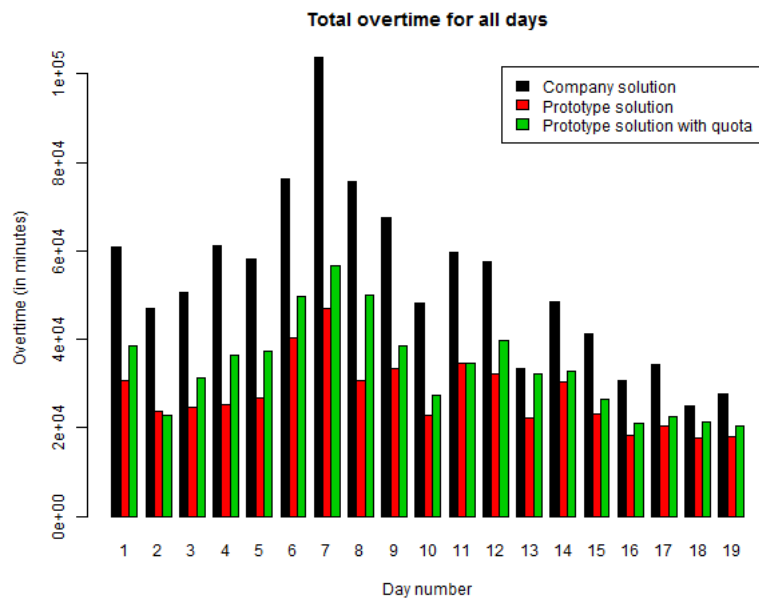


Figure 1.29: Comparison of the overtime for an order of the company solution versus the dynamic results