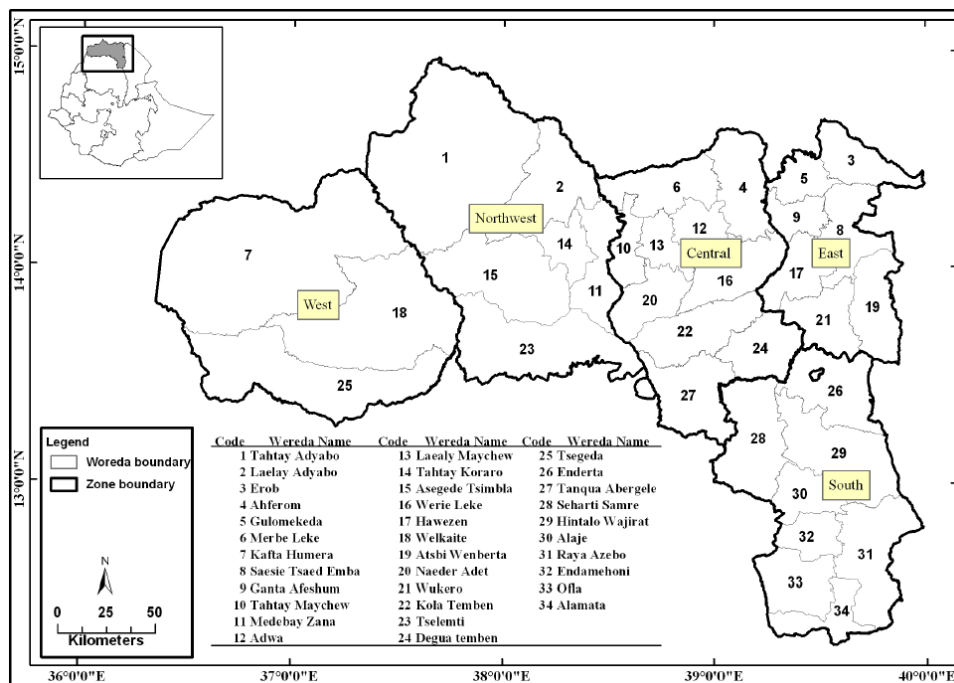


Annexe

Annexe 1 : Carte du Tigré



Source : Tagel, G. & van der Veen, A.(2011). Effect of policy interventions on food security in Tigray, Northern Ethiopia. *Ecology and Society*, 16(1), 18., p.6

Annexe 2 : Tableau de moyenne de consommation calorifique par adulte

Table 8: Mean kilocalories of consumption per adult equivalent per day sorted by lowest value in total column

	Rural	Urban	Rural & Urban (Total)
Amhara	2,758	2,987	2,794
Addis Ababa	.	2,834	2,834
Dire Dawa	3,363	2,751	2,916
Tigray	3,018	3,135	3,048
Afar	3,077	3,119	3,091
Somali	3,157	3,029	3,132
Oromia	3,227	2,958	3,181
Harari	3,639	2,874	3,208
Gambela	3,473	2,966	3,319
Benishangul	3,327	3,406	3,339
Gumuz			
SNNPR	3,575	3,207	3,529
Total	3,164	2,985	3,127

Source: HCE 2011

Source : CSA & WFP (2014) Comprehensive Food Security and Vulnerability Analysis. Ethiopia, 1-104, Addis Abeba, March 2014, p.33

Annexe 3 : Tableau de pourcentage de ménages déficientes en consommation d'énergie/adulte/jour

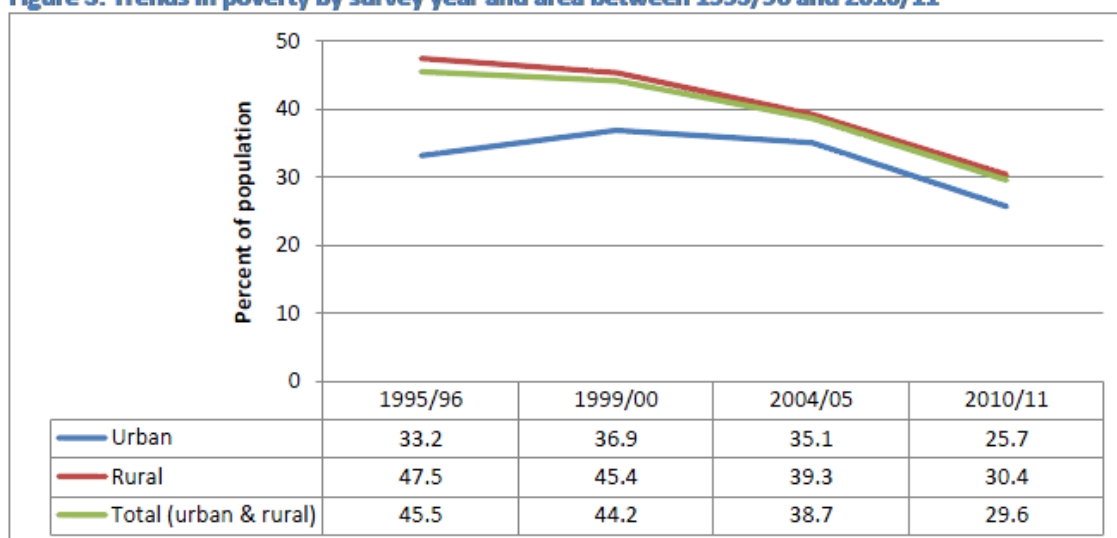
Table 9: Percent of food energy deficient households (<2,550 kilocalories/adult equivalent/day) by region and rural/urban

	Rural	Urban	Total
Tigray	44%	37%	42%
Afar	38%	39%	38%
Amhara	51%	40%	49%
Oromia	39%	42%	40%
Somali	40%	41%	40%
Benishangul Gumuz	37%	30%	36%
SNNPR	27%	33%	27%

Source : CSA & WFP (2014) Comprehensive Food Security and Vulnerability Analysis. Ethiopia, 1-104, Addis Abeba, March 2014, p.34

Annexe 4 : Graphe de progression de la pauvreté

Figure 3: Trends in poverty by survey year and area between 1995/96 and 2010/11



Source : CSA & WFP (2014) Comprehensive Food Security and Vulnerability Analysis. Ethiopia, 1-104, Addis Abeba, March 2014, p.15

Annexe 5 : Tableaux de la population en dessous du seuil de pauvreté/pauvreté alimentaire

Table 1: Population (in 100,000s) falling below poverty line by region, survey year and percentage change between 1995/96 and 2010/11 (sorted by highest to lowest percentage change)

	1995/96	1999/00	2004/05	2010/11	% change 1995/96 - 2010/11
Somali	1.030	1.402	1.723	1.591	54.5%
Gambela	65	107	NA	100	53.9%
Afar	366	681	487	551	50.6%
Dire Dawa	80	105	130	106	32.5%
Oromia	6.725	8.919	9.280	8.630	28.3%
Addis Ababa	670	901	913	829	23.7%
Ben/Gumuz	226	290	264	233	3.1%
Tigray	1.851	2.268	1.995	1.505	-18.7%
SNNPR	6.139	6.370	5.381	4.861	-20.8%
Harari	31	41	50	22	-29.0%
Amhara	7.902	6.811	7.282	5.596	-29.2%

Source: The 1995/96, 1999/00, 2004/05 HICE, 2010/11 HCE Surveys, and a series of Statistical Abstracts published by the CSA

Table 2: Population (in 100,000s) falling below food poverty line by region, survey year and percentage change between 1995/96 and 2010/11 (sorted by highest to lowest percentage change)

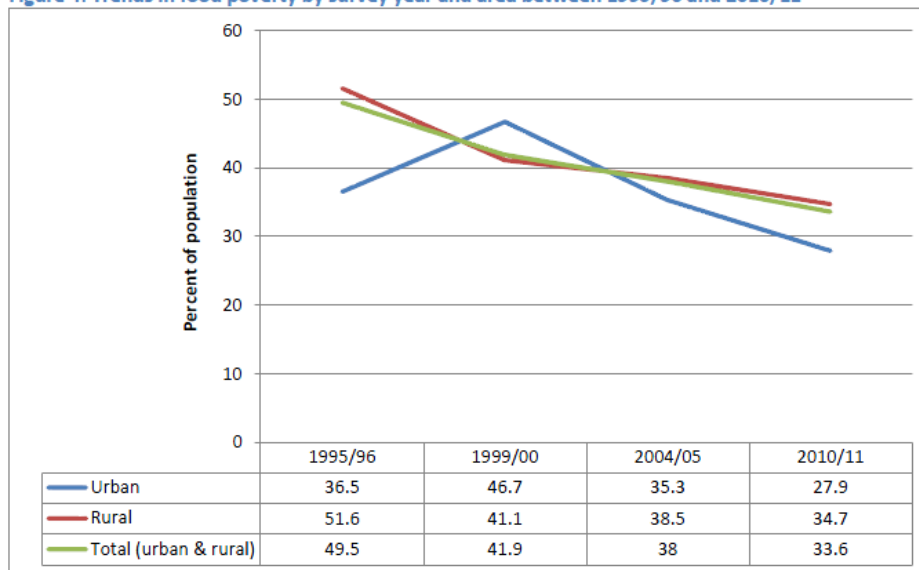
	1995/96	1999/00	2004/05	2010/11	% change 1995/96 - 2010/11
Gambela	54	121	NA	81	50.0%
Afar	368	649	521	492	33.7%
Oromia	8.287	8.495	9.261	9.953	20.1%
Somali	1.279	1.572	1.681	1.295	1.3%
Ben/Gumuz	286	296	264	283	-1.1%
Addis Ababa	813	1.185	909	770	-5.3%
Amhara	8.353	5.296	7.039	7.798	-6.6%
Dire Dawa	95	88	128	81	-14.7%
Tigray	2.141	1.984	1.925	1.756	-18.0%
SNNPR	5.688	6.846	5,211	4.253	-25.2%
Harari	32	52	46	9	-71.9%

Source: The 1995/96, 1999/00, 2004/05 HICE, 2010/11 HCE Surveys, and a series of Statistical Abstracts published by the CSA

Source : CSA & WFP (2014) Comprehensive Food Security and Vulnerability Analysis. Ethiopia, 1-104, Addis Abeba, March 2014, p.18

Annexe 6 : Graphe de progression de la pauvreté alimentaire

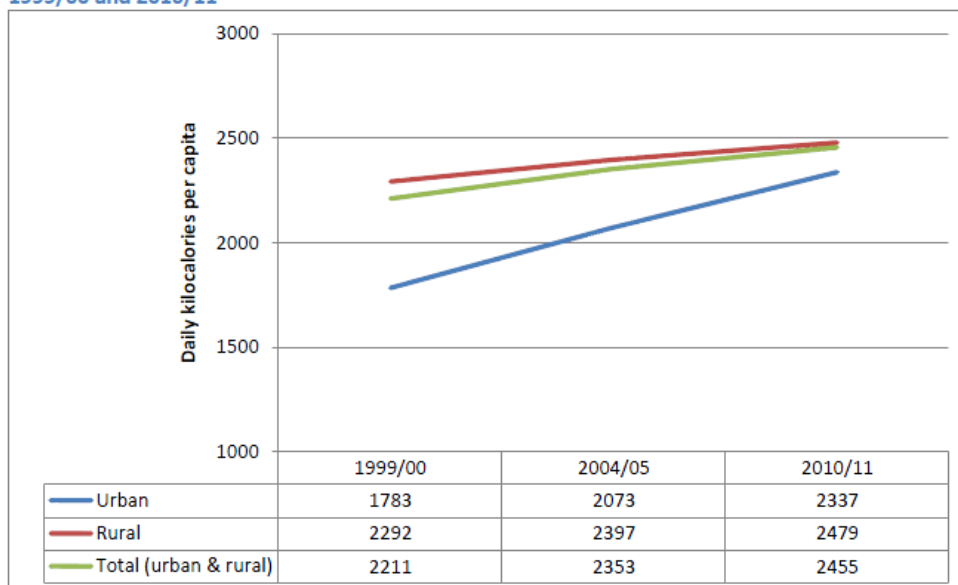
Figure 4: Trends in food poverty by survey year and area between 1995/96 and 2010/11



Source : CSA & WFP (2014) Comprehensive Food Security and Vulnerability Analysis. Ethiopia, 1-104, Addis Abeba, March 2014, p.16

Annexe 7 : Graphe de progression de la consommation calorifique

Figure 5: Trends in daily per capita gross kilocalorie consumption by survey year and area between 1999/00 and 2010/11



Source : CSA & WFP (2014) Comprehensive Food Security and Vulnerability Analysis. Ethiopia, 1-104, Addis Abeba, March 2014, p.17

Annexe 8 : Tableau des indicateurs clés de la sécurité alimentaire et vulnérabilité

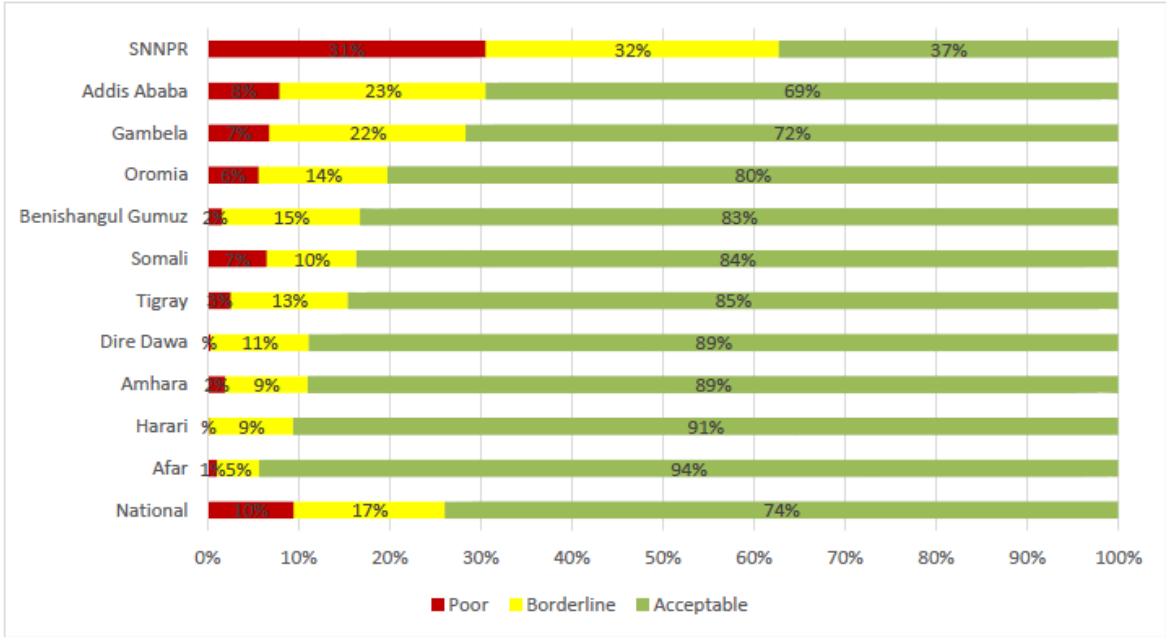
Table 7: Key indicators by main strata

	Diet Quantity		Diet Quality		Food Consumption Adequacy		Economic Vulnerability				
	Mean kilocalories per adult equivalent per day	Consumption < 2550 kcal / adult equivalent / day (% of households)	>75% of total household calories coming from starch staples (% of households)	Low dietary diversity (<=3 food groups over 7 days) (% of households)	Poor food consumption (% of households)	Poor or borderline food consumption (% of households)	Below absolute poverty line (% of households)	Below food poverty line (% of households)	75% or more of total expenditures on food (% of households)	65% or more of total expenditures on food (% of households)	Lowest total expenditures per capita quintile (% of households)
Total (Ethiopia)	3127	40%	50%	30%	10%	26%	23%	28%	2%	12%	20%
REGIONS											
Tigray	3048	42%	52%	20%	3%	15%	24%	30%	1%	11%	16%
Afar	3091	38%	43%	47%	1%	6%	28%	25%	9%	28%	17%
Amhara	2794	49%	33%	36%	2%	11%	24%	35%	3%	14%	22%
Oromia	3181	40%	58%	20%	6%	20%	22%	27%	1%	9%	19%
Somali	3132	40%	39%	38%	7%	16%	25%	21%	6%	22%	17%
Benishangul Gumuz	3339	36%	32%	18%	2%	17%	23%	28%	2%	11%	18%
SNNPR	3529	27%	70%	43%	31%	63%	24%	22%	3%	16%	26%
Gambela	3319	35%	51%	30%	7%	28%	24%	20%	7%	26%	13%
Harari	3208	31%	45%	9%	0%	9%	9%	4%	2%	6%	1%
Addis Ababa	2834	50%	8%	30%	8%	31%	21%	19%	3%	9%	3%
Dire Dawa	2914	42%	30%	10%	0%	11%	21%	17%	1%	6%	3%
RURAL / URBAN											
Rural	3164	40%	58%	34%	11%	29%	24%	29%	2%	14%	24%
Urban	2985	42%	20%	16%	4%	17%	19%	21%	1%	5%	4%
REGIONS (RURAL ONLY)											
Tigray	3018	44%	61%	25%	3%	17%	29%	33%	2%	14%	21%
Afar	3077	38%	57%	65%	1%	5%	33%	27%	13%	40%	25%
Amhara	2758	51%	36%	41%	2%	12%	24%	38%	3%	15%	25%
Oromia	3227	39%	65%	22%	6%	22%	24%	28%	1%	10%	21%
Somali	3157	40%	46%	43%	7%	16%	27%	22%	6%	25%	20%
Benishangul Gumuz	3327	37%	35%	19%	2%	17%	24%	30%	3%	13%	21%
SNNPR	3575	27%	75%	47%	34%	68%	25%	22%	4%	17%	29%
Gambela	3473	30%	60%	35%	8%	29%	25%	19%	10%	35%	14%
Harari	3639	15%	86%	17%	0%	11%	9%	4%	0%	4%	1%
Addis Ababa											
Dire Dawa	3363	19%	80%	18%	1%	3%	12%	12%	1%	3%	6%
REGIONS (URBAN ONLY)											
Tigray	3135	37%	26%	7%	1%	10%	11%	19%	0%	1%	3%
Afar	3119	39%	12%	10%	1%	8%	17%	20%	0%	2%	2%
Amhara	2987	40%	16%	12%	1%	6%	21%	20%	1%	5%	3%
Oromia	2958	42%	26%	13%	2%	12%	17%	24%	1%	4%	6%
Somali	3029	41%	13%	21%	5%	17%	21%	16%	4%	9%	8%
Benishangul Gumuz	3406	30%	13%	11%	0%	15%	14%	18%	0%	1%	3%
SNNPR	3207	33%	34%	14%	7%	29%	18%	20%	1%	4%	5%
Gambela	2966	46%	29%	19%	4%	28%	23%	22%	1%	3%	9%
Harari	2874	42%	14%	3%	0%	9%	9%	3%	3%	7%	1%
Addis Ababa	2834	50%	8%	30%	8%	31%	21%	19%	3%	9%	3%
Dire Dawa	2751	50%	12%	7%	0%	14%	24%	19%	1%	7%	2%

Source : CSA & WFP (2014) Comprehensive Food Security and Vulnerability Analysis. Ethiopia, 1-104, Addis Ababa, March 2014, p.32

Annexe 9 :Tableau de pourcentage des foyers avec une consommation pauvre, limite et adéquate par région

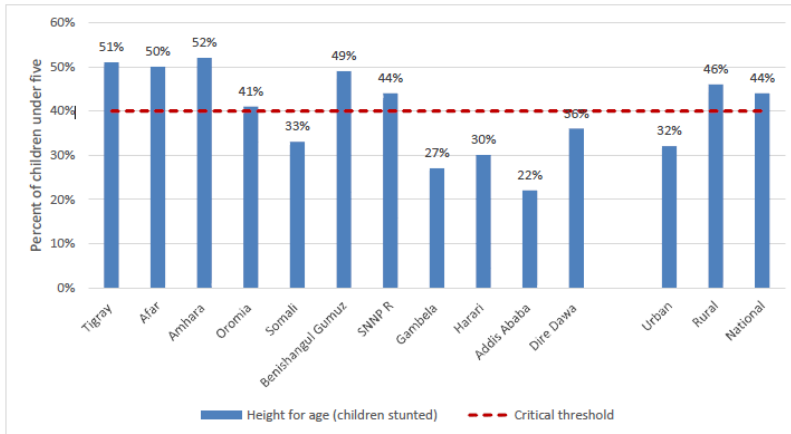
Figure 17: Percent of households with poor, borderline and acceptable food consumption by region and national level



Source : CSA & WFP (2014) Comprehensive Food Security and Vulnerability Analysis. Ethiopia, 1-104, Addis Abeba, March 2014, p.41

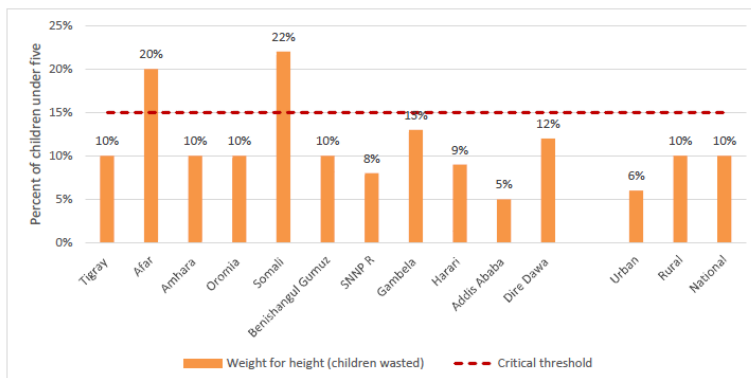
Annexe 10 : Tableaux du nombre d'enfant atrophiés, ayant un retard de croissance et en insuffisance pondérale

Figure 29: Percentage of children under five years classified as stunted by region



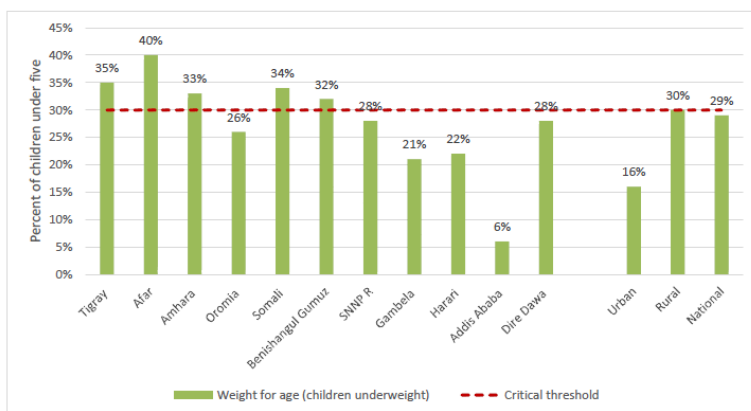
Source: Ethiopia Demographic and Health Survey, CSA, 2011

Figure 30: Percentage of children under five years classified as wasted by region



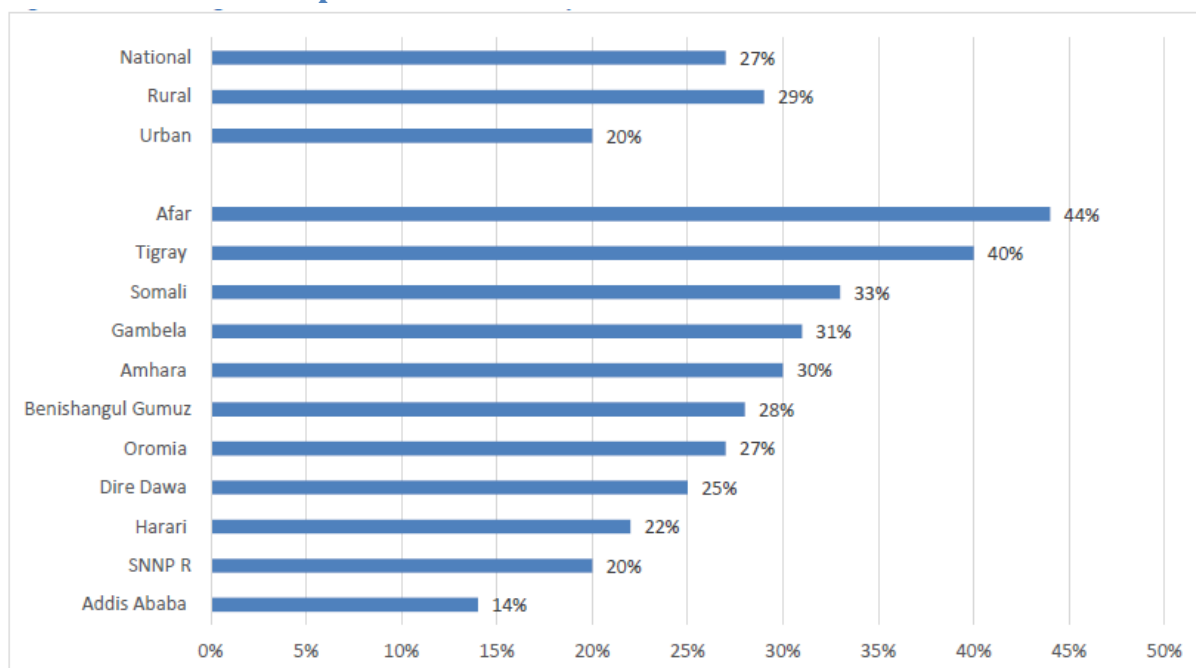
Source: Ethiopia Demographic and Health Survey, CSA, 2011

Figure 31: Percentage of children under five years classified as underweight by region



Source : CSA & WFP (2014) Comprehensive Food Security and Vulnerability Analysis. Ethiopia, 1-104, Addis Abeba, March 2014, pp.59-60

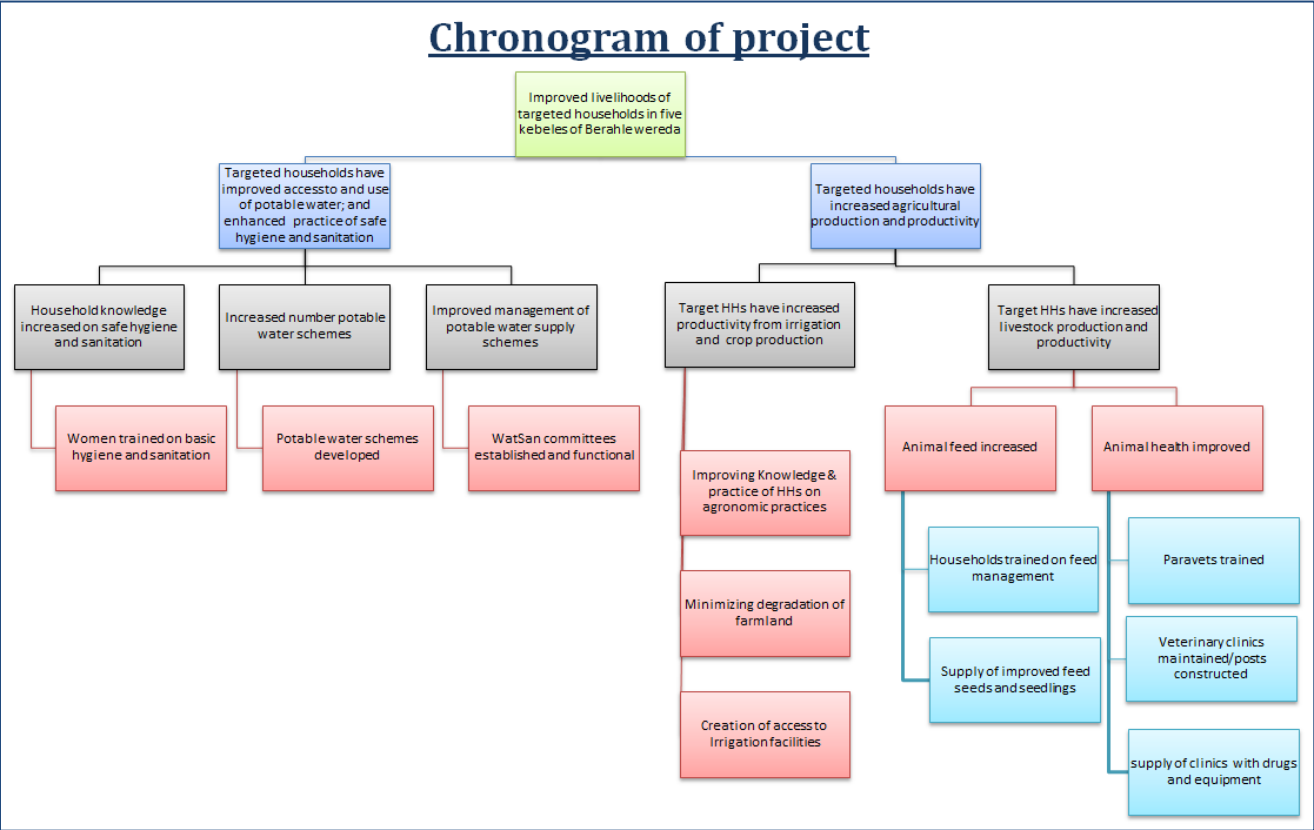
Annexe 11 : Tableau de pourcentage de femmes de 15 à 49 ans ayant un Indice de masse corporel inférieur à 18



Source: Ethiopia Demographic and Health Survey, CSA, 2011

Source : CSA & WFP (2014) Comprehensive Food Security and Vulnerability Analysis. Ethiopia, 1-104, Addis Abeba, March 2014, p. 62

Annexe 12 : Chronogramme de projet d'amélioration des conditions des ménages



Source : François Van Durme d'après les documents de COL