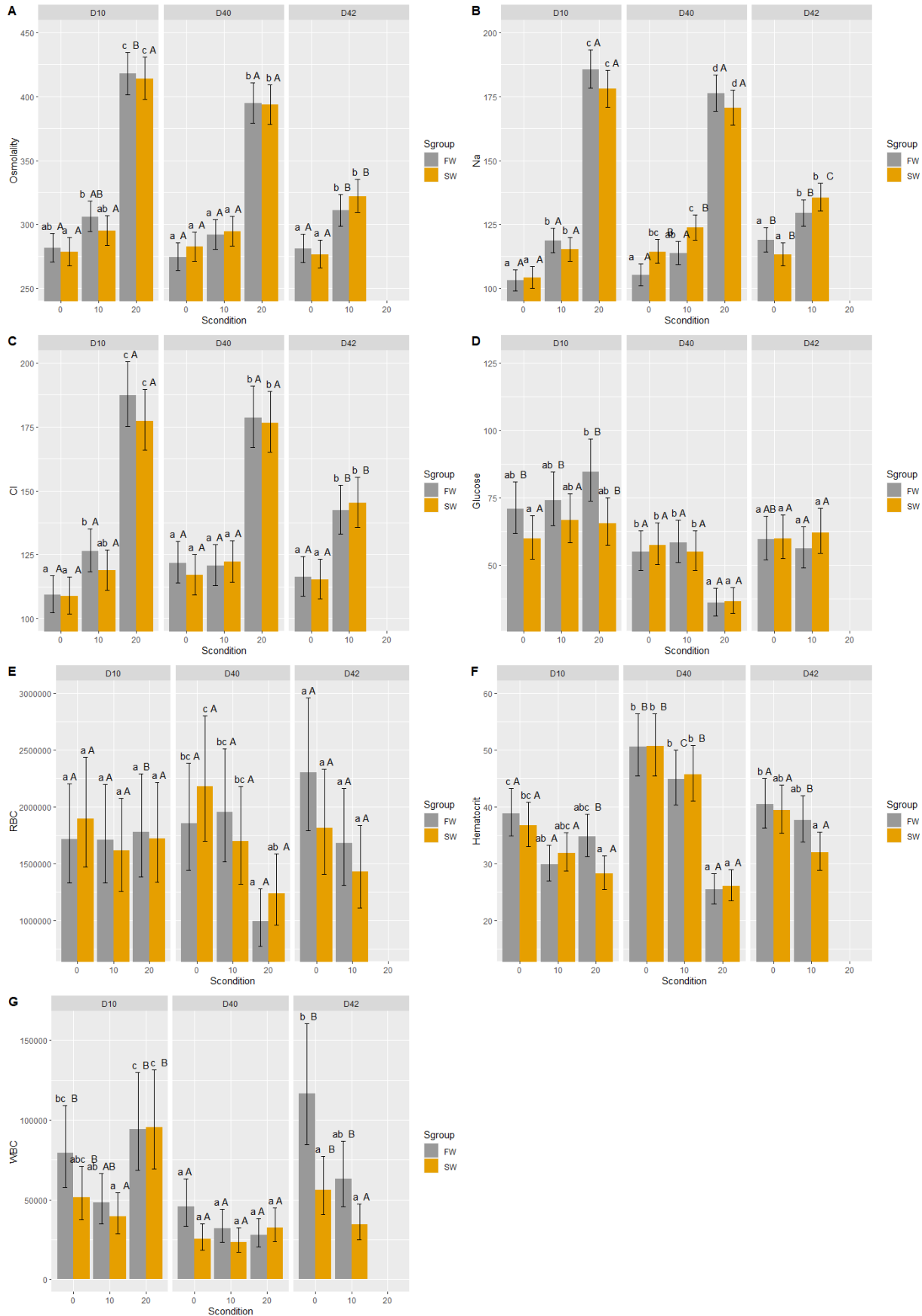


Annex 1 - Early exposure of striped catfish (*P. hypophthalmus*) to increased salinities could elicit conditioning hormesis in juvenile fish.

Annex 1 – Tables a graphics from measured data

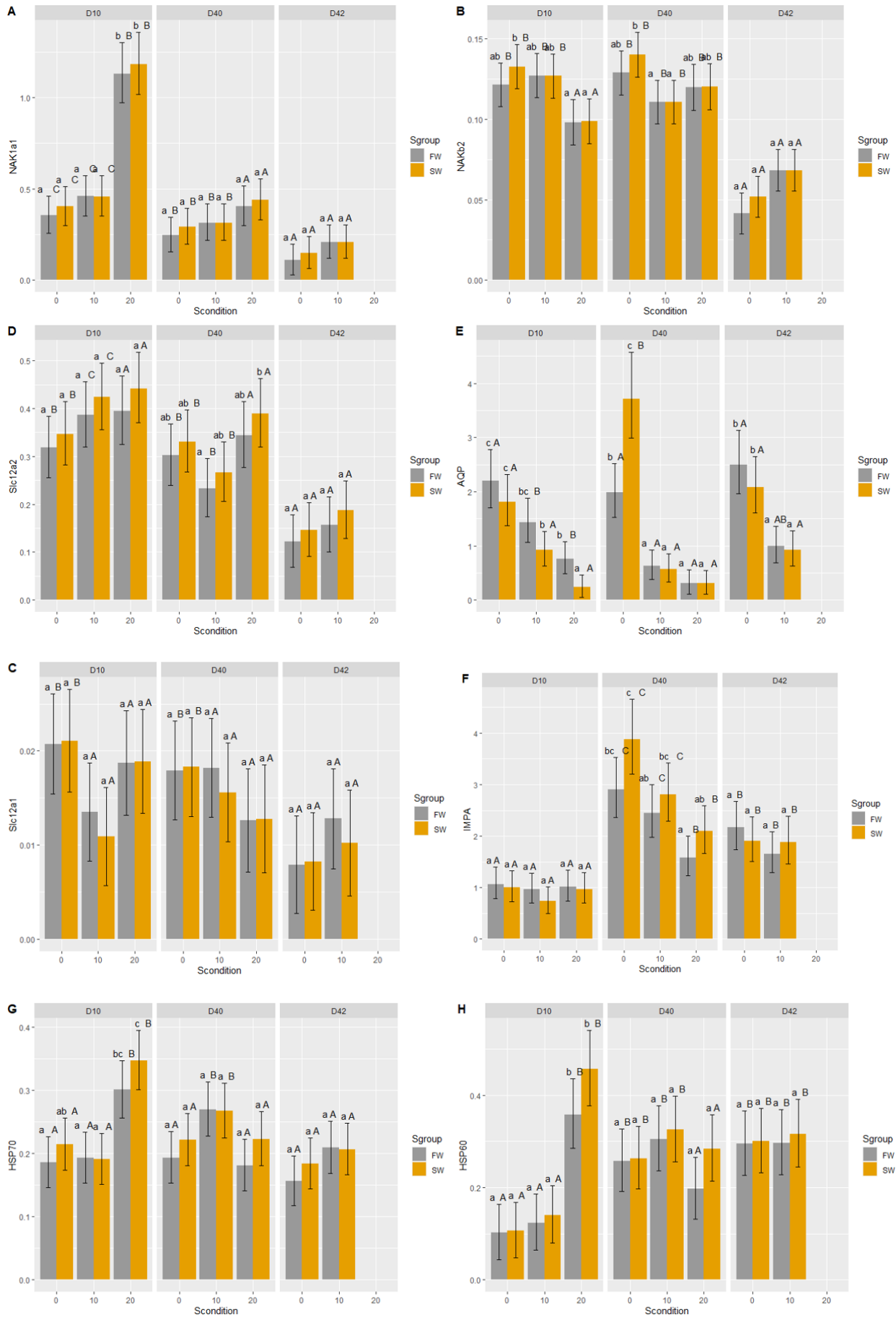


Annex 1 - Early exposure of striped catfish (*P. hypophthalmus*) to increased salinities could elicit conditioning hormesis in juvenile fish.

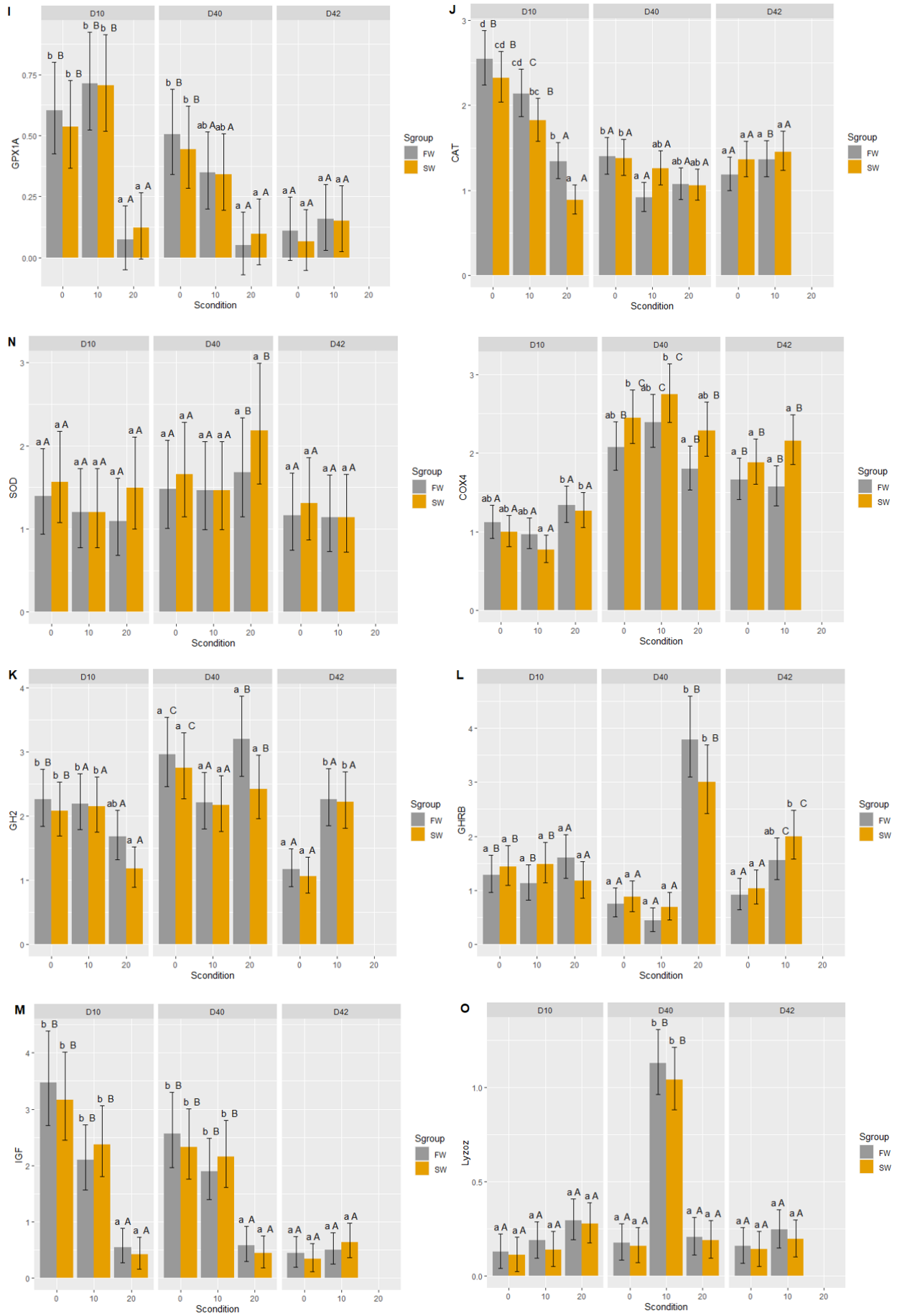
	Osmolality			Cl		
Treatment	D10	D40	D42	D10	D40	D42
C0-FW	281.77±2.02 ab A	274.58±2.02 a A	280.87±2.02 a A	109.34±2.03 a A	121.75±2.03 a A	116.26±2.03 a A
C0-SW	278.4±2.02 a A	282.44±2.02 a A	276.59±2.02 a A	108.8±2.03 a A	117.02±2.03 a A	115.28±2.03 a A
C10-FW	306.13±2.02 b AB	291.89±2.02 a A	310.96±2.02 b B	126.43±2.03 b A	120.65±2.03 a A	142.3±2.03 b B
C10-SW	294.91±2.02 ab A	294.42±2.02 a A	322.08±2.02 b B	118.81±2.03 ab A	122.17±2.03 a A	145.19±2.03 b B
C20-FW	417.87±2.02 c B	394.59±2.02 b A	-	187.44±2.03 c A	178.61±2.03 b A	-
C20-SW	414.02±2.02 c A	393.5±2.02 b A	-	177.39±2.03 c A	176.58±2.03 b A	-
	Na			Glucose		
Treatment	D10	D40	D42	D10	D40	D42
C0-FW	103.07±2.02 a A	105.18±2.02 a A	118.97±2.02 a B	70.67±2.08 ab B	54.85±2.08 b A	59.43±2.08 a A
C0-SW	104.19±2.02 a A	114.36±2.02 bc B	113.18±2.02 a B	59.66±2.08 a A	57.33±2.08 b A	59.83±2.08 a A
C10-FW	118.72±2.02 b A	113.83±2.02 ab A	129.41±2.02 b B	73.9±2.08 ab B	58.22±2.08 b A	56.08±2.08 a A
C10-SW	115.26±2.02 b A	123.74±2.02 c B	135.53±2.02 b C	66.68±2.08 ab A	54.78±2.08 b A	62.05±2.08 a A
C20-FW	185.64±2.02 c A	176.25±2.02 d A	-	84.54±2.08 b A	35.82±2.08 a A	-
C20-SW	177.94±2.02 c A	170.52±2.02 d A	-	65.46±2.08 ab A	36.46±2.08 a A	-
	RBC			Hematocrit		
Treatment	D10	D40	D42	D10	D40	D42
C0-FW	1.71±0.21 a A	1.85±0.21 bc A	0.230±0.21 a A	38.86±2.06 c A	50.61±2.06 b B	40.43±2.06 b A
C0-SW	1.89±0.21 a A	0.218±0.21 c A	1.81±0.21 a A	36.73±2.06 bc A	50.68±2.06 b B	39.39±2.06 ab A
C10-FW	1.71±0.21 a A	1.9±0.21 bc A	1.68±0.21 a A	29.94±2.06 ab A	44.94±2.06 b C	37.69±2.06 ab B
C10-SW	1.61±0.21 a A	1.69±0.21 bc A	1.43±0.21 a A	31.88±2.06 abc A	45.68±2.06 b B	32.01±2.06 a A
C20-FW	1.78±0.21 a B	0.99±0.21 a A	-	34.83±2.06 abc B	25.49±2.06 a A	-
C20-SW	1.72±0.21 a A	1.23±0.21 ab A	-	28.28±2.06 a A	26.05±2.06 a A	-
	WBC					
Treatment	D10	D40	D42			
C0-FW	7.93±0.22 bc B	4.56±0.22 a A	11.64±0.22 b B			
C0-SW	5.14±0.22 abc B	0.251±0.22 a A	5.59±0.22 a B			
C10-FW	4.82±0.22 ab AB	3.20±0.22 a A	6.29±0.22 ab B			
C10-SW	3.93±0.22 a A	0.234±0.22 a A	3.42±0.22 a A			
C20-FW	9.40±0.22 c B	0.278±0.22 a A	-			
C20-SW	9.55±0.22 c B	3.24±0.22 a A	-			

Annex1-Table 1: Values for each blood measure variable for each treatment in the tree sampling points (mean±-CI). Lower case letters denote statistically significant differences between treatments in the same sampling point and capital letters denote statistically significant differences for a given treatment between sampling points ($p < 0.05$). Osmolality (mOsmo.kg-1), Na+ (mM), Cl- (mM), Glucose (g.L-1), RBC (106cells.µL-1), Hct (%), RBC (104cells.µL-1).

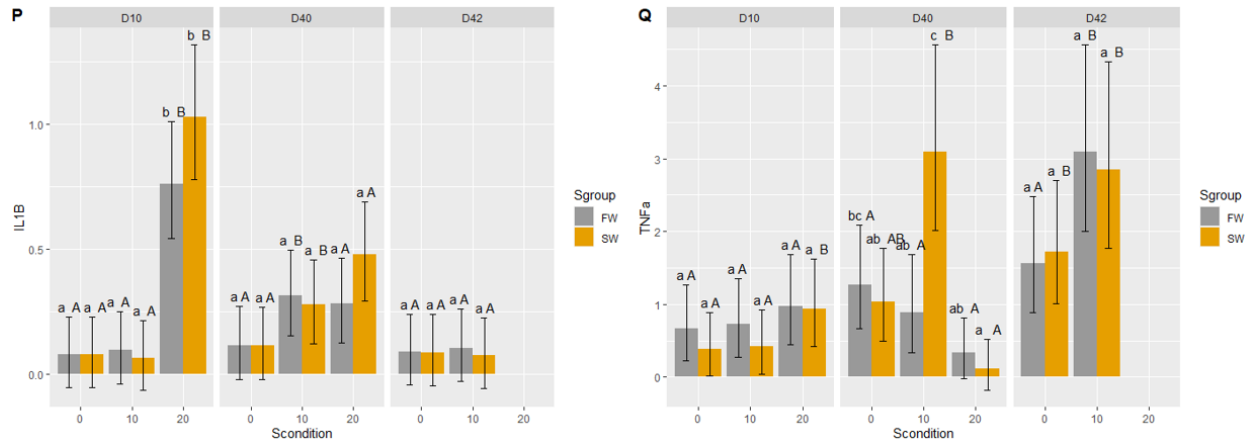
Annex 1 - Early exposure of striped catfish (*P. hypophthalmus*) to increased salinities could elicit conditioning hormesis in juvenile fish.



Annex 1 - Early exposure of striped catfish (*P. hypophthalmus*) to increased salinities could elicit conditioning hormesis in juvenile fish.



Annex 1 - Early exposure of striped catfish (*P. hypophthalmus*) to increased salinities could elicit conditioning hormesis in juvenile fish.



Treatment	<i>slc12a1</i>			<i>slc12a2</i>		
	D10	D40	D42	D10	D40	D42
C0-FW	0.02±0 a B	0.02±0 a B	0.01±0 a A	0.32±0.02 a B	0.3±0.02 ab B	0.12±0.02 a A
C0-SW	0.02±0 a B	0.02±0 a B	0.01±0 a A	0.35±0.02 a B	0.33±0.02 ab B	0.15±0.02 a A
C10-FW	0.01±0 a A	0.02±0 a A	0.01±0 a A	0.41±0.02 a C	0.24±0.02 a B	0.16±0.02 a A
C10-SW	0.01±0 a A	0.02±0 a A	0.01±0 a A	0.44±0.02 a C	0.26±0.02 ab B	0.18±0.02 a A
C20-FW	0.02±0 a B	0.01±0 a A	-	0.39±0.02 a A	0.34±0.02 ab A	-
C20-SW	0.02±0 a B	0.01±0 a A	-	0.44±0.02 a A	0.39±0.02 b A	-
Treatment	<i>nka1a1</i>			<i>nkab2</i>		
	D10	D40	D42	D10	D40	D42
C0-FW	0.35±0.04 a C	0.25±0.04 a B	0.11±0.04 a A	0.12±0.01 ab B	0.13±0.01 ab B	0.04±0.01 a A
C0-SW	0.4±0.04 a C	0.29±0.04 a B	0.15±0.04 a A	0.13±0.01 b B	0.14±0.01 b B	0.05±0.01 a A
C10-FW	0.46±0.04 a C	0.31±0.04 a B	0.21±0.04 a A	0.13±0.01 ab B	0.11±0.01 a B	0.07±0.01 a A
C10-SW	0.46±0.04 a C	0.31±0.04 a B	0.21±0.04 a A	0.13±0.01 ab B	0.11±0.01 a B	0.07±0.01 a A
C20-FW	1.13±0.04 b B	0.4±0.04 a A	-	0.1±0.01 a A	0.12±0.01 ab B	-
C20-SW	1.18±0.04 b B	0.44±0.04 a A	-	0.1±0.01 a A	0.12±0.01 ab B	-
Treatment	<i>aqp</i>			<i>impa</i>		
	D10	D40	D42	D10	D40	D42
C0-FW	2.19±0.09 c A	1.98±0.09 b A	2.5±0.09 b A	1.07±0.06 a A	2.9±0.06 bc C	2.17±0.06 a B
C0-SW	1.81±0.09 c A	3.38±0.09 c B	2.09±0.09 b A	1±0.06 a A	3.57±0.06 c C	1.91±0.06 a B
C10-FW	1.44±0.09 bc B	0.63±0.09 a A	1±0.09 a AB	0.97±0.06 a A	2.45±0.06 b C	1.65±0.06 a B
C10-SW	0.92±0.09 b A	0.57±0.09 a A	0.93±0.09 a A	0.74±0.06 a A	2.81±0.06 bc C	1.88±0.06 a B
C20-FW	0.75±0.09 b B	0.31±0.09 a A	-	1.01±0.06 a A	1.58±0.06 a B	-
C20-SW	0.24±0.09 a A	0.31±0.09 a A	-	1.14±0.06 a A	2.09±0.06 ab B	-
Treatment	<i>cox4</i>			<i>igf</i>		
	D10	D40	D42	D10	D40	D42
C0-FW	1.12±0.04 bc A	2.08±0.04 ab C	1.66±0.04 ab B	3.59±0.09 c B	2.96±0.09 b B	0.48±0.09 a A
C0-SW	1±0.04 ab A	2.45±0.04 bc C	1.88±0.04 ab B	3.06±0.09 bc B	2.5±0.09 b B	0.31±0.09 a A
C10-FW	0.97±0.04 ab A	2.39±0.04 bc C	1.58±0.04 a B	2.09±0.09 b B	1.89±0.09 b B	0.5±0.09 a A
C10-SW	0.77±0.04 a A	2.74±0.04 c C	2.16±0.04 b B	2.38±0.09 bc B	2.15±0.09 b B	0.64±0.09 a A
C20-FW	1.34±0.04 bc A	1.8±0.04 a B	-	0.57±0.1 a A	0.56±0.1 a A	-
C20-SW	1.51±0.04 c A	2.29±0.04 abc B	-	0.46±0.1 a A	0.45±0.1 a A	-
Treatment	<i>ghrb</i>			<i>gh</i>		
	D10	D40	D42	D10	D40	D42
C0-FW	1.28±0.07 a B	0.75±0.07 a A	0.91±0.07 a A	2.26±0.06 b B	2.96±0.06 ab C	1.18±0.06 a A
C0-SW	1.43±0.07 a B	0.87±0.07 a A	1.04±0.07 ab A	2.09±0.06 b B	2.75±0.06 ab C	1.06±0.06 a A
C10-FW	1.12±0.07 a B	0.44±0.07 a A	1.56±0.07 bc C	2.16±0.06 b A	2.07±0.06 a A	2.23±0.06 b A
C10-SW	1.49±0.07 a B	0.69±0.07 a A	2±0.07 c C	2.19±0.06 b A	2.1±0.06 a A	2.26±0.06 b A
C20-FW	1.65±0.07 a A	3.69±0.07 b B	-	1.74±0.07 ab A	3.11±0.07 b B	-
C20-SW	1.34±0.07 a A	3.13±0.07 b B	-	1.33±0.07 a A	2.5±0.07 ab B	-

Annex 1 - Early exposure of striped catfish (*P. hypophthalmus*) to increased salinities could elicit conditioning hormesis in juvenile fish.

	<i>sod</i>			<i>cat</i>		
Treatment	D10	D40	D42	D10	D40	D42
C0-FW	1.44±0.1 a A	1.52±0.1 a A	1.09±0.1 a A	2.55±0.04 c B	1.4±0.04 bc A	1.19±0.04 a A
C0-SW	1.52±0.1 a A	1.61±0.1 a A	1.16±0.1 a A	2.32±0.04 c B	1.5±0.04 c A	1.36±0.04 a A
C10-FW	1.16±0.1 a A	1.56±0.1 a A	1.09±0.1 a A	2.14±0.04 bc C	0.92±0.04 a A	1.37±0.04 a B
C10-SW	1.24±0.1 a A	1.66±0.1 a A	1.18±0.1 a A	1.82±0.04 b B	1.26±0.04 bc A	1.45±0.04 a A
C20-FW	1.1±0.11 a A	1.67±0.11 a B	-	1.34±0.04 a B	1.07±0.04 ab A	-
C20-SW	1.49±0.11 a A	2.16±0.11 a B	-	1.04±0.04 a A	1.06±0.04 ab A	-
	<i>hsp60</i>			<i>hsp70</i>		
Treatment	D10	D40	D42	D10	D40	D42
C0-FW	0.1±0.03 a A	0.26±0.03 a B	0.29±0.03 a B	0.19±0.02 a A	0.19±0.02 a A	0.16±0.02 a A
C0-SW	0.11±0.03 a A	0.26±0.03 a B	0.3±0.03 a B	0.21±0.02 ab A	0.22±0.02 a A	0.18±0.02 a A
C10-FW	0.12±0.03 a A	0.3±0.03 a B	0.3±0.03 a B	0.19±0.02 a A	0.27±0.02 a B	0.21±0.02 a A
C10-SW	0.14±0.03 a A	0.33±0.03 a B	0.32±0.03 a B	0.19±0.02 a A	0.27±0.02 a B	0.21±0.02 a A
C20-FW	0.36±0.03 b B	0.2±0.03 a A	-	0.3±0.02 bc B	0.18±0.02 a A	-
C20-SW	0.46±0.03 b B	0.28±0.03 a A	-	0.35±0.02 c B	0.22±0.02 a A	-
	<i>gpx1a</i>			<i>lyz</i>		
Treatment	D10	D40	D42	D10	D40	D42
C0-FW	0.6±0.06 b B	0.51±0.06 b B	0.11±0.06 a A	0.13±0.03 ab A	0.18±0.03 a A	0.16±0.03 a A
C0-SW	0.54±0.06 b B	0.44±0.06 b B	0.07±0.06 a A	0.11±0.03 a A	0.16±0.03 a A	0.14±0.03 a A
C10-FW	0.71±0.06 b B	0.35±0.06 ab A	0.16±0.06 a A	0.19±0.03 ab A	1.13±0.03 b B	0.25±0.03 a A
C10-SW	0.7±0.06 b B	0.34±0.06 ab A	0.15±0.06 a A	0.14±0.03 ab A	1.05±0.03 b B	0.2±0.03 a A
C20-FW	0.07±0.06 a A	0.05±0.06 a A	-	0.3±0.03 b A	0.21±0.03 a A	-
C20-SW	0.12±0.06 a A	0.1±0.06 a A	-	0.28±0.03 ab A	0.19±0.03 a A	-
	<i>tnfa</i>			<i>il1b</i>		
Treatment	D10	D40	D42	D10	D40	D42
C0-FW	0.67±0.12 a A	1.27±0.12 c AB	1.56±0.12 a B	0.08±0.05 a A	0.12±0.05 a A	0.09±0.05 a A
C0-SW	0.39±0.12 a A	0.34±0.12 ab A	1.72±0.12 ab B	0.08±0.05 a A	0.11±0.05 a A	0.09±0.05 a A
C10-FW	0.73±0.12 a A	0.95±0.12 bc A	3.09±0.12 b B	0.1±0.05 a A	0.31±0.05 ab B	0.1±0.05 a A
C10-SW	0.42±0.12 a A	1.51±0.12 c B	2.87±0.12 ab C	0.07±0.05 a A	0.28±0.05 ab B	0.07±0.05 a A
C20-FW	0.97±0.12 a B	0.33±0.12 ab A	-	0.71±0.05 b B	0.24±0.05 ab A	-
C20-SW	0.93±0.12 a B	0.11±0.12 a A	-	1.1±0.05 b B	0.52±0.05 b A	-

Annex1-Table 2: Relative gene expression values for each treatment in the three sampling points (mean±CI). Lower case letters denote statistically significant differences between treatments in the same sampling point and capital letters denote statistically significant differences for a given treatment between sampling points ($p < 0.05$).