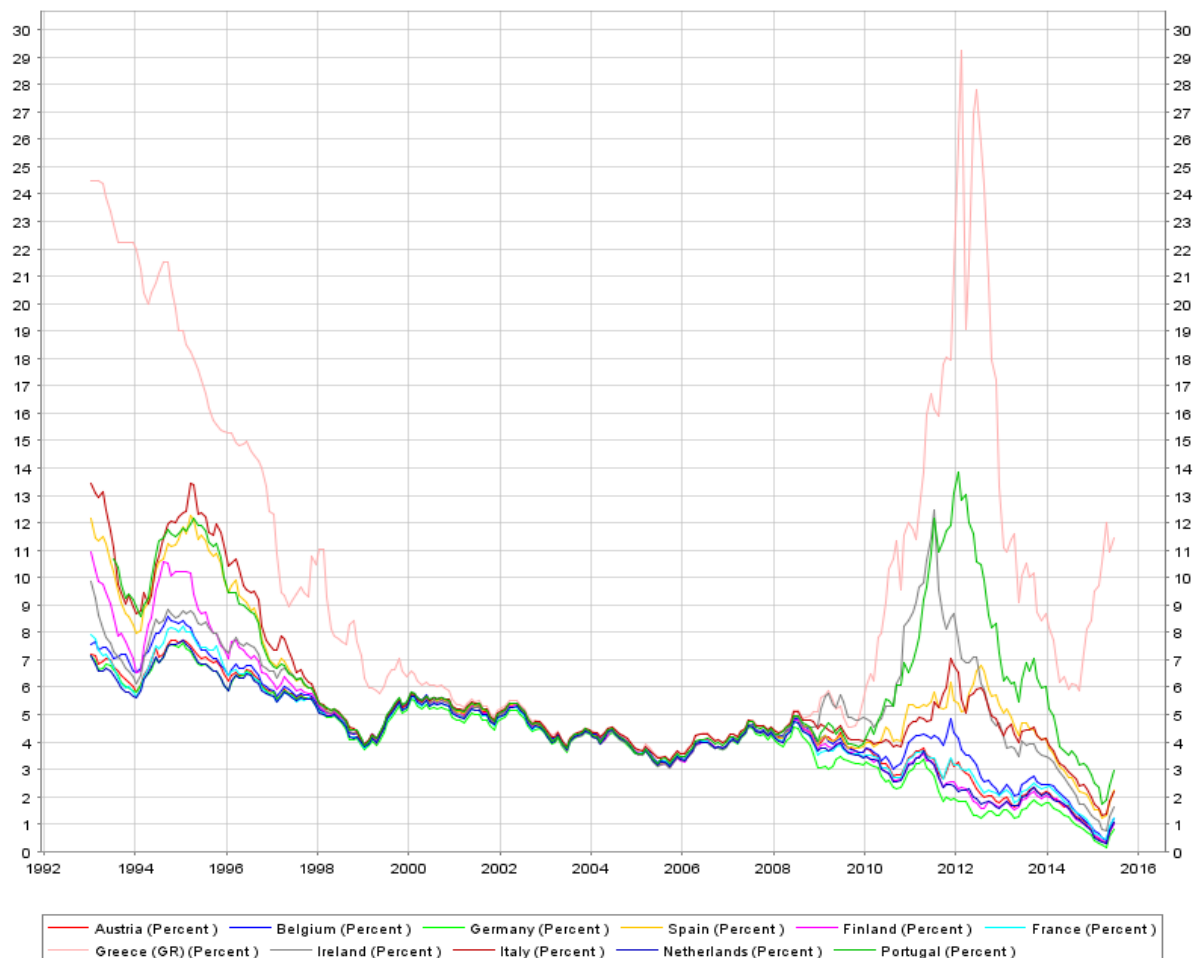


Appendix 1: Graphs and tables

Graph 1: Long-term interest rates (10-year maturity) of EMU government bonds (%)



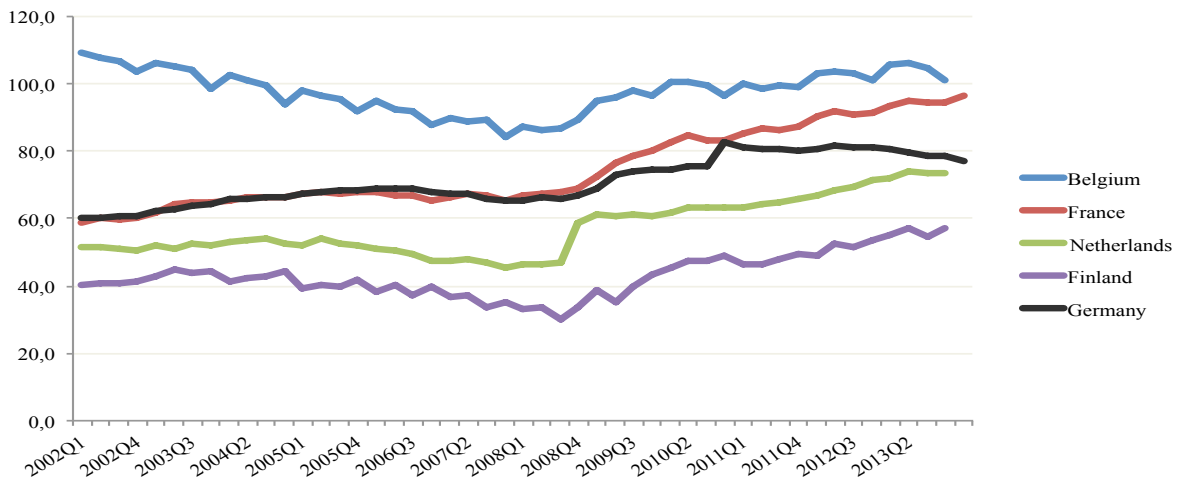
Source: European Central bank (ECB) data warehouse

Table 1: Average yield spread for 10-year government bonds relative to Germany (bps)

| | Austria | Belgium | Finland | France | Greece | Ireland | Italy | Netherlands | Portugal | Spain |
|------|---------|---------|---------|--------|--------|---------|-------|-------------|----------|-------|
| 1993 | 18.4 | 70.6 | 230.1 | 25.5 | 1685.7 | 119.9 | 467.2 | -16.2 | 468.1 | 369.9 |
| 1994 | 16.6 | 88.8 | 217.5 | 35.3 | 1402.7 | 122.9 | 365.8 | 0.2 | 361.2 | 313.3 |
| 1995 | 28.4 | 63.1 | 194.0 | 68.6 | 1042.6 | 160.2 | 535.7 | 4.9 | 462.1 | 442.7 |
| 1996 | 11.3 | 27.8 | 88.3 | 11.6 | 842.0 | 115.0 | 313.1 | -5.9 | 235.5 | 252.2 |
| 1997 | 3.3 | 10.1 | 76.5 | -7.1 | 454.4 | 65.1 | 118.0 | -7.3 | 71.8 | 73.9 |
| 1998 | 16.3 | 19.1 | 24.6 | 8.5 | 393.3 | 24.5 | 33.7 | 7.0 | 28.6 | 27.8 |
| 1999 | 20.3 | 26.2 | 22.6 | 11.8 | 190.8 | 21.6 | 25.1 | 14.1 | 31.2 | 24.2 |
| 2000 | 29.9 | 33.3 | 20.3 | 13.9 | 82.2 | 25.2 | 33.3 | 15.2 | 35.1 | 27.0 |
| 2001 | 27.4 | 32.0 | 22.8 | 13.3 | 48.9 | 19.3 | 37.5 | 14.9 | 35.8 | 28.8 |
| 2002 | 16.8 | 19.8 | 18.2 | 8.4 | 32.3 | 21.6 | 24.2 | 11.1 | 22.6 | 15.2 |

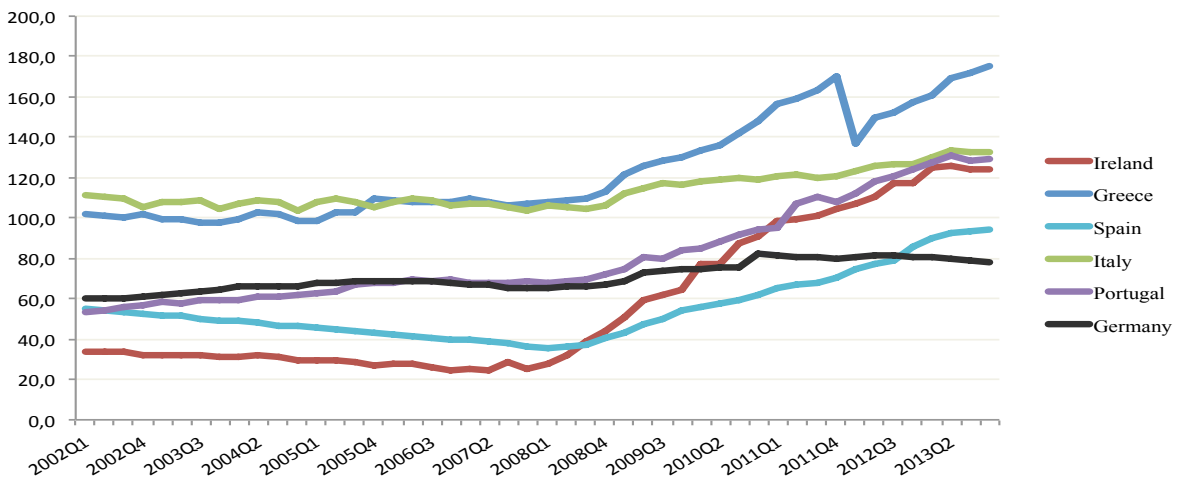
Source: European Central Bank

Graph 2: Debt-to-GDP ratio (in %)- EMU central countries



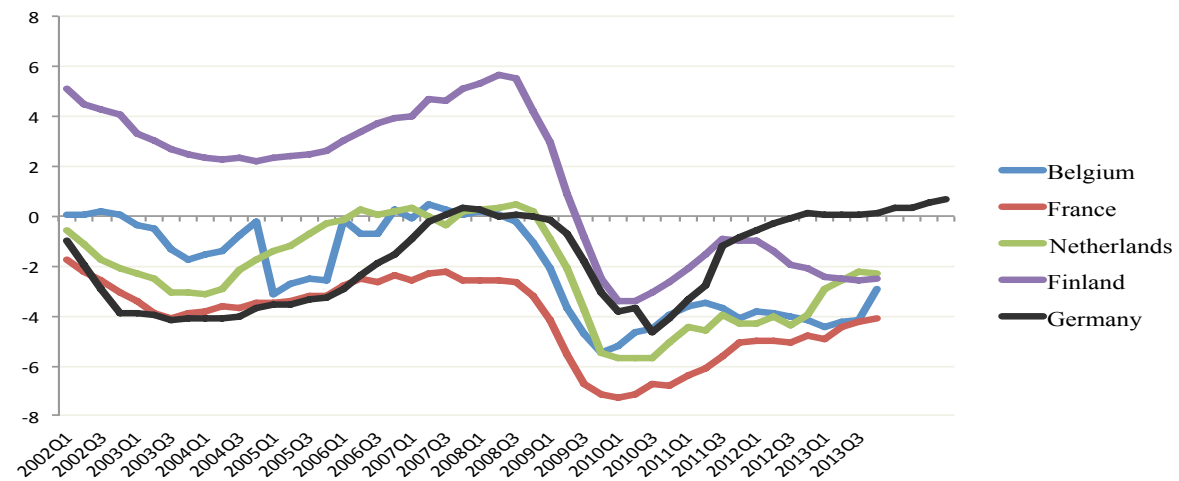
Source: Eurostat

Graph 3: Debt-to-GDP ratio (in %)- EMU peripheral countries



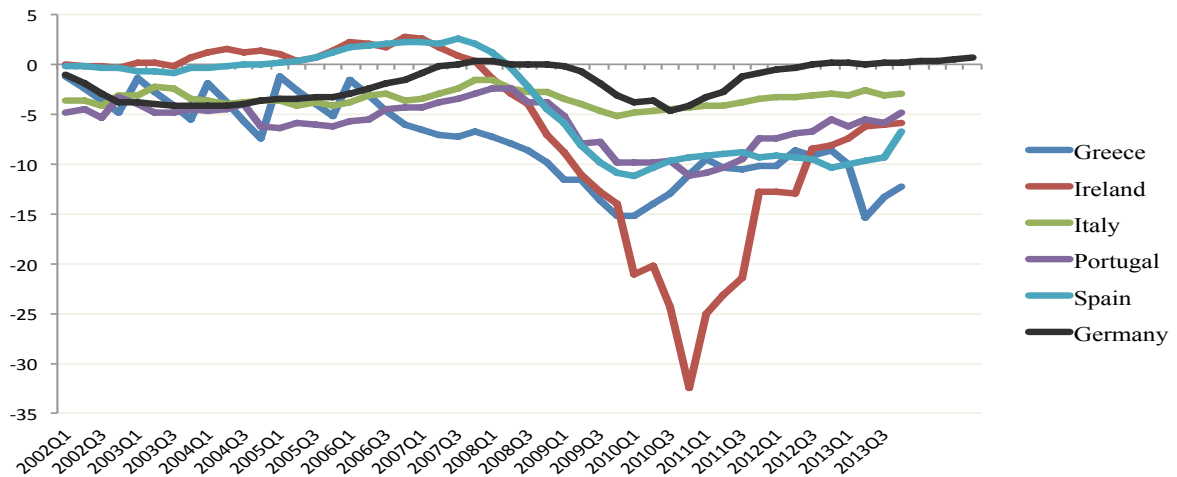
Source: Eurostat

Graph 4: Budget balance-to-GDP ratio (in %)- EMU central countries



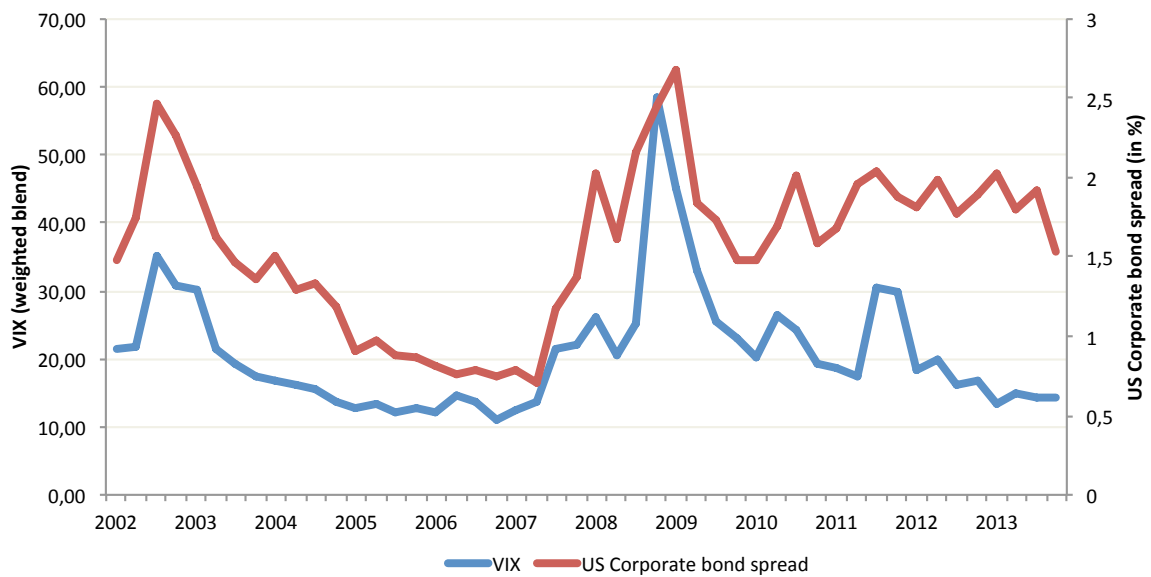
Source: Eurostat

Graph 5: Budget balance-to-GDP ratio (in %)- EMU peripheral countries



Source: Eurostat

Graph 6: Exogenous measures of international risk aversion



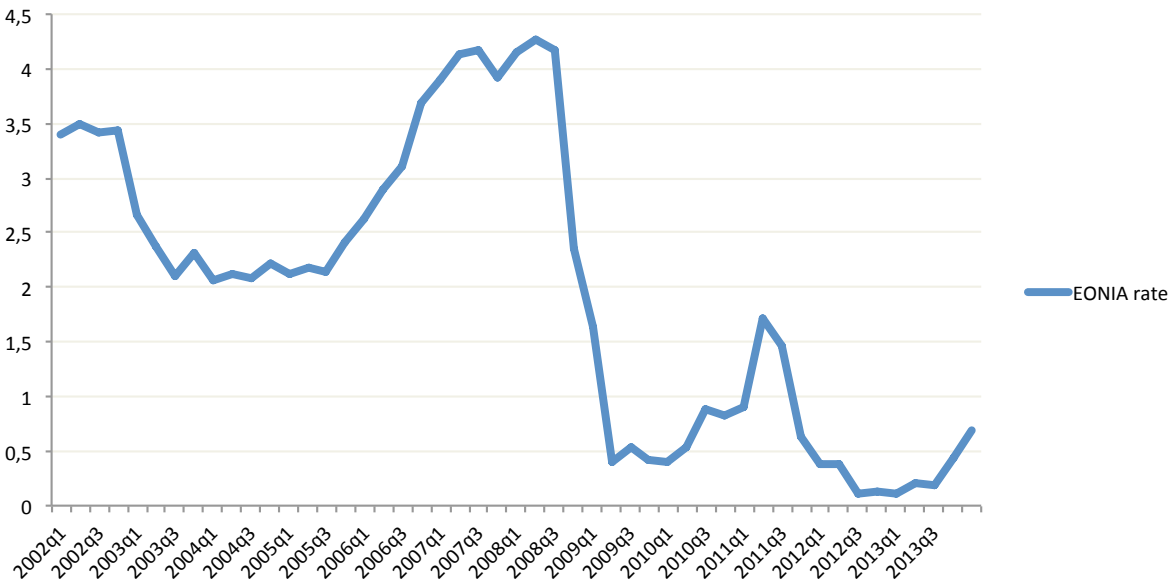
Sources: Bloomberg Terminal and the Federal Reserve Bank of St-Louis.

Notes:

VIX index= The Chicago Board Options Exchange Volatility Index

US corporate bond spread= Yield spread between Moody’s Seasoned AAA US corporate bonds and 10-year US Treasury bonds

Graph 7: European Overnight Index Average reference rate (Eonia)



Source: European central bank (ECB) data warehouse

Note: Weighted rate for the overnight maturity, calculated by collecting data on unsecured overnight lending in the euro area provided by banks belonging to the EONIA panel .