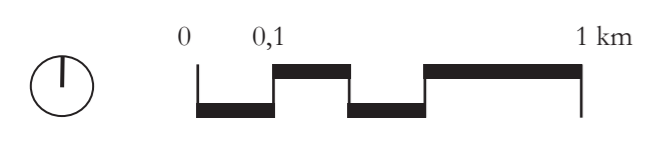
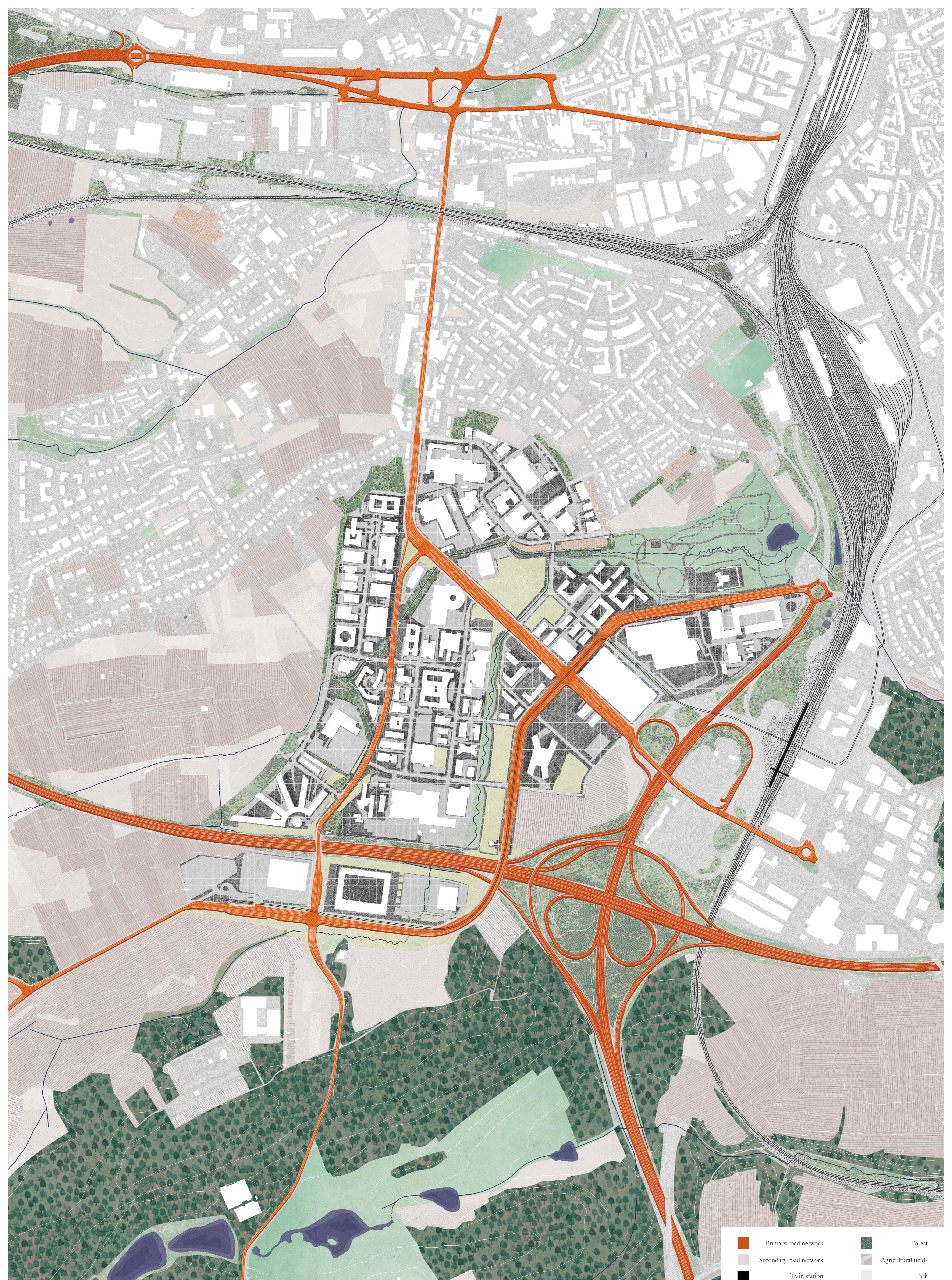








Business parks, artisanal and industrial zones surrounding the City of Luxembourg

Atelier de recherche: Territorialités - UCLouvain - LOCI - Bruxelles 2023/2024
Jo Schmitz

- Water course
- Business park
- Building



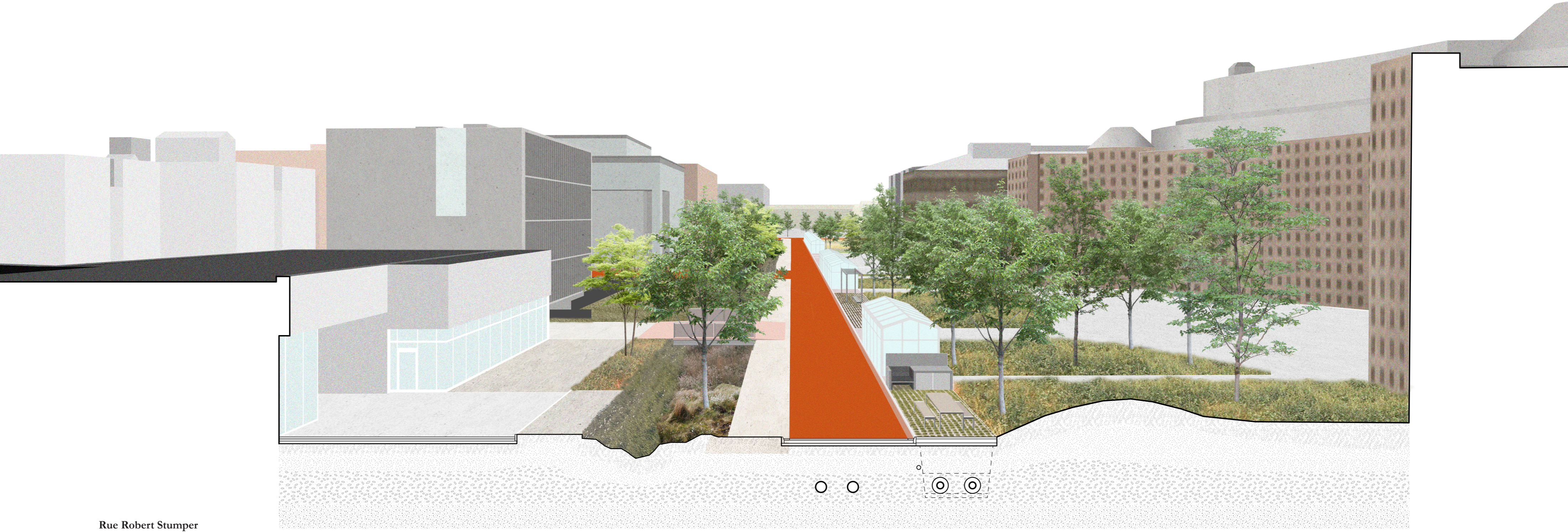


- | | | | |
|---|------------------------|---|---------------------|
|  | Primary road network |  | Forest |
|  | Secondary road network |  | Agricultural fields |
|  | Train station |  | Park |
|  | Tram line |  | Green corridor |
|  | Water network |  | Plain |
|  | Water basin |  | Garden |

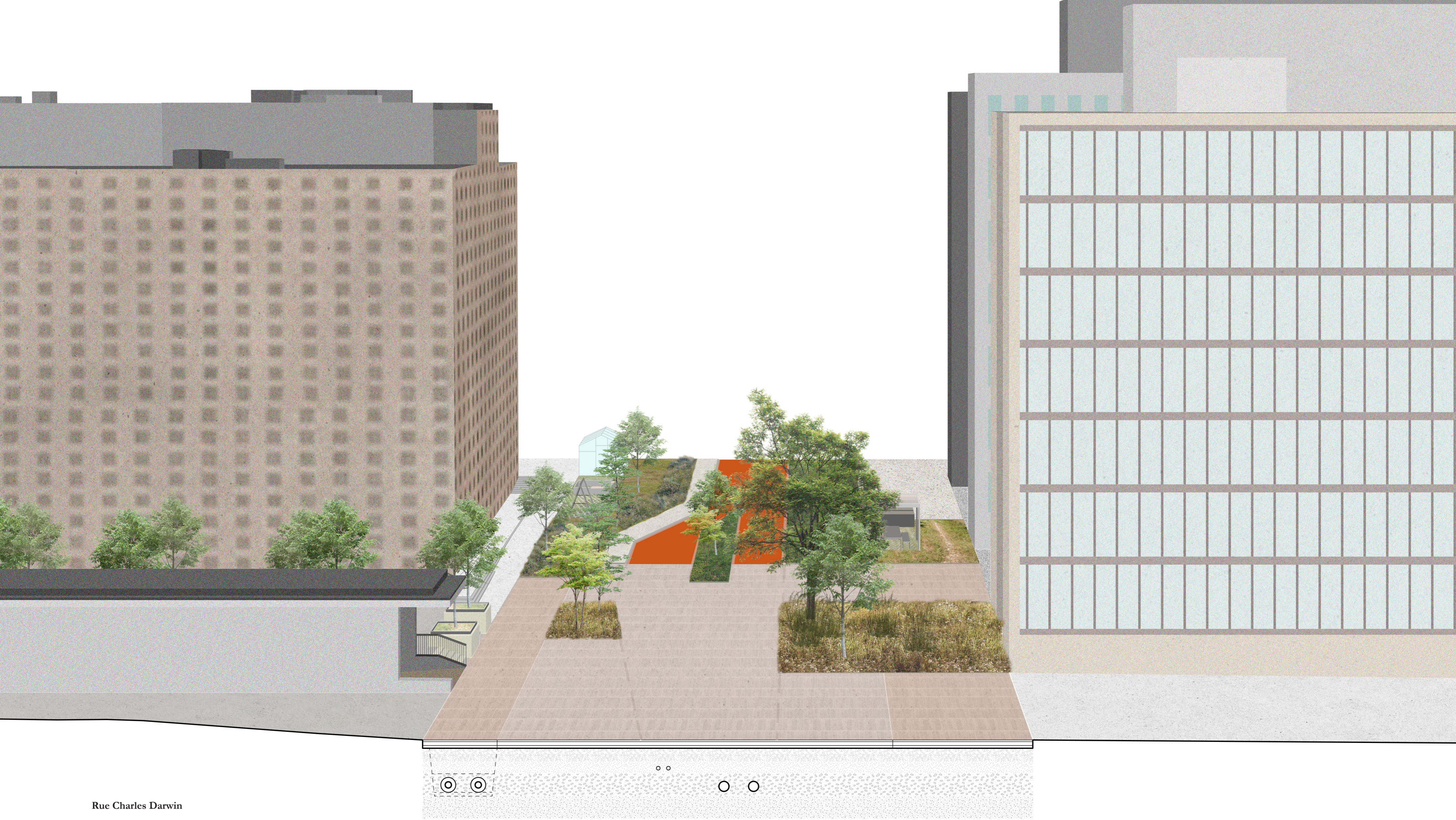
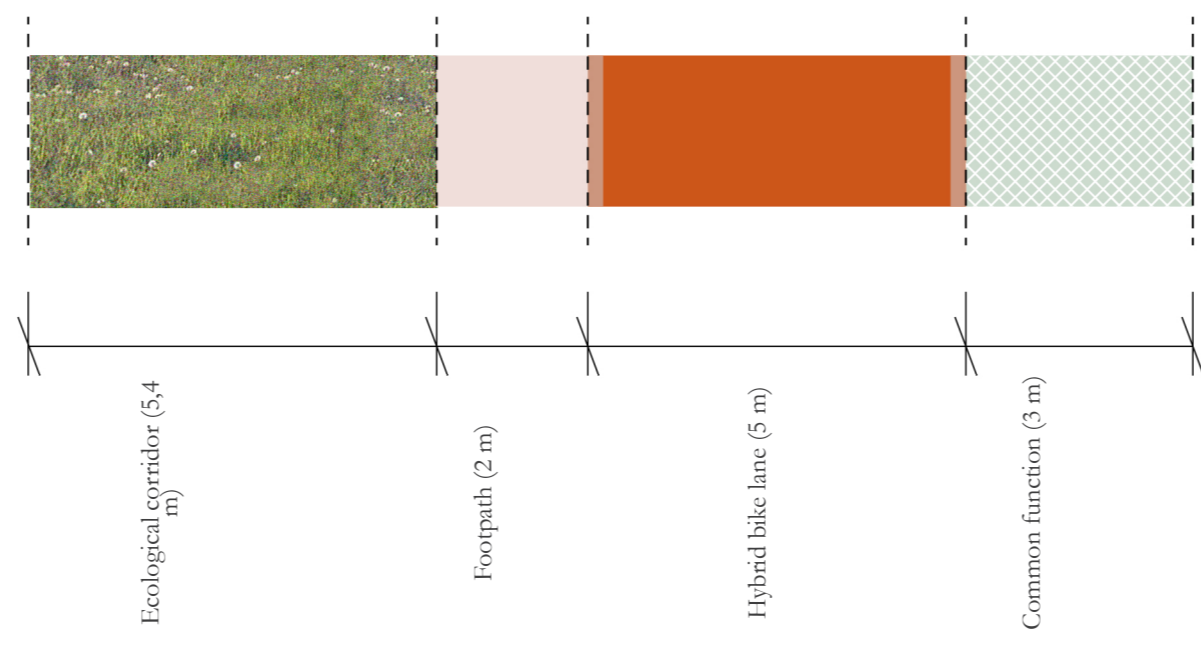
Contextualising the Cloche d'Or with an emphasis on fixed mobility infrastructure

Atelier de recherche: Territorialités - UCLouvain - LOCI - Bruxelles 2023/2024
Jo Schmitz

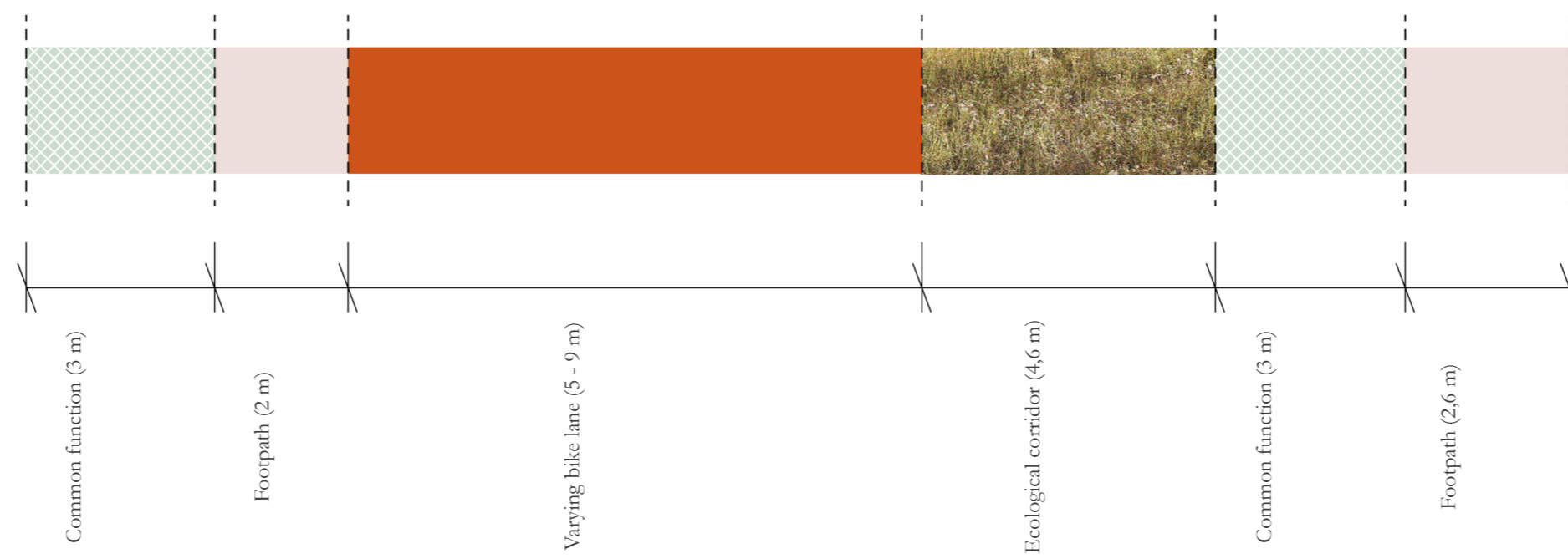




Rue Robert Stumper

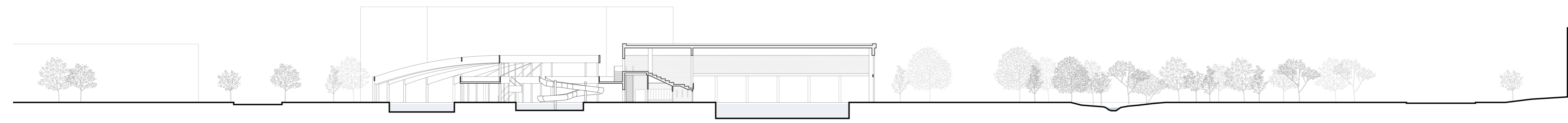


Rue Charles Darwin

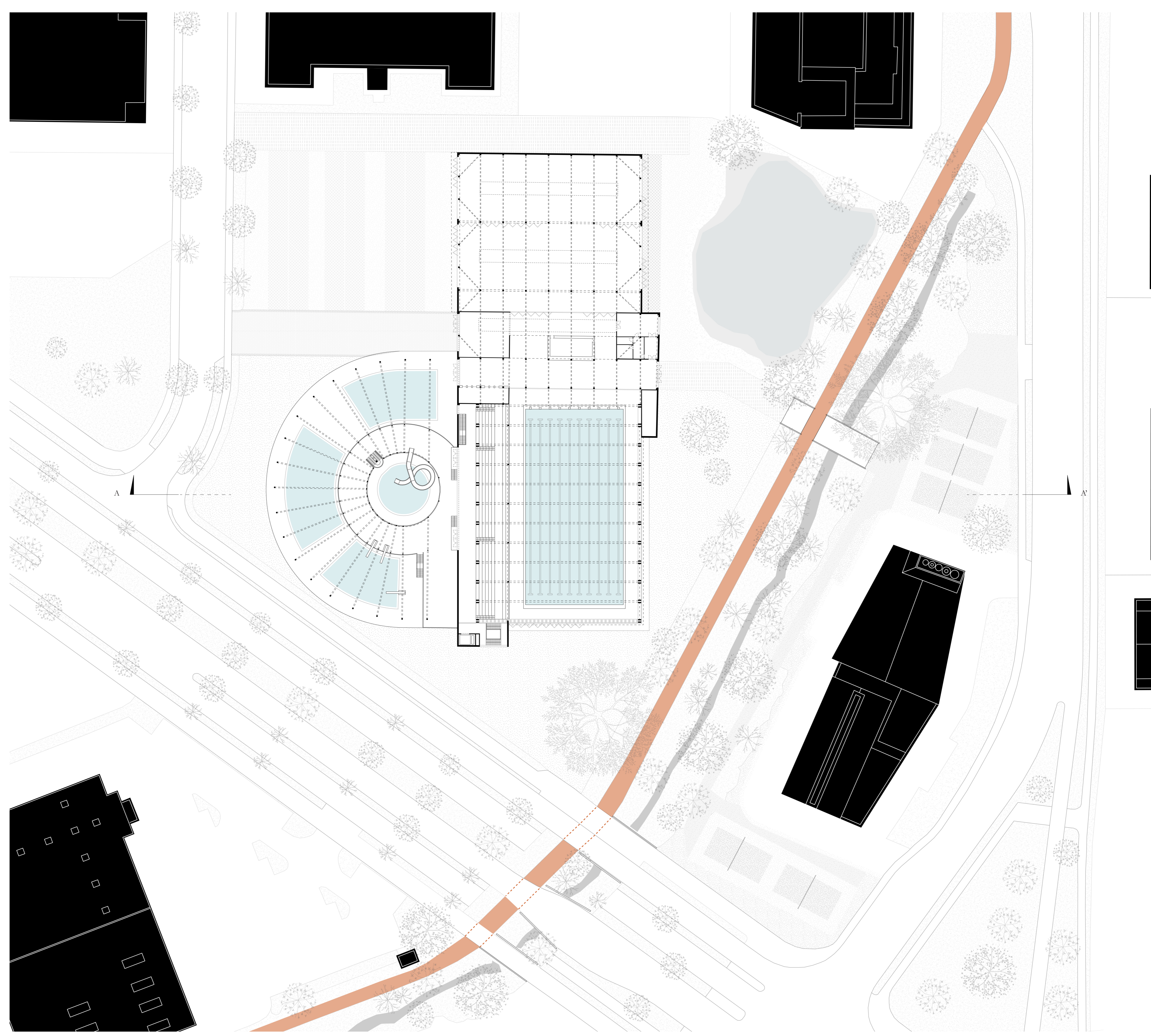


Perspective cross sections of the Rue Robert Stumper an Rue Charles Darwin





Cross section AA'



Public swimming pool on the intersection of the *Boulevard W.H. Raiffeisen* and the *Route d'Esch*

