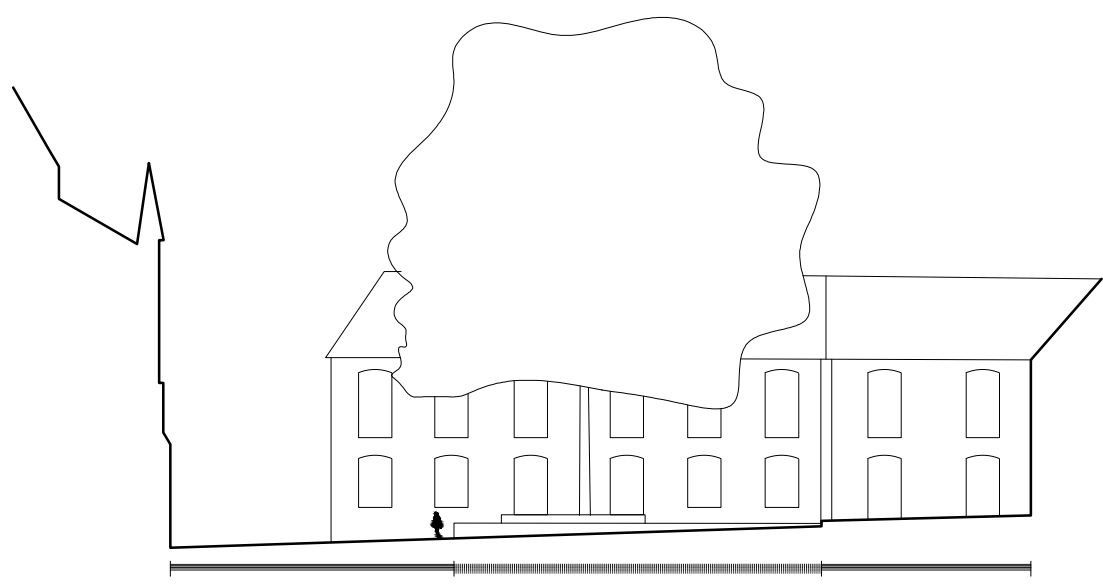


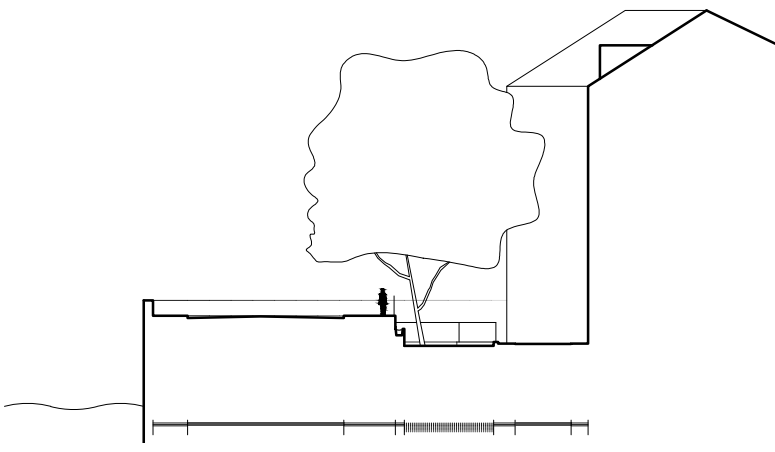
L'arbre comme outil d'aménagement de l'espace urbain



Arbre isolé



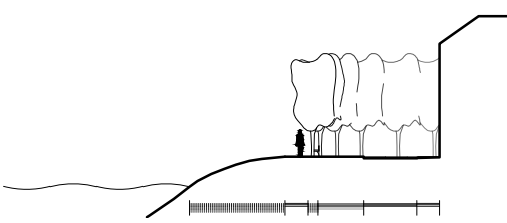
Arbre de la Liberté, Bayeux



Arbre isolé



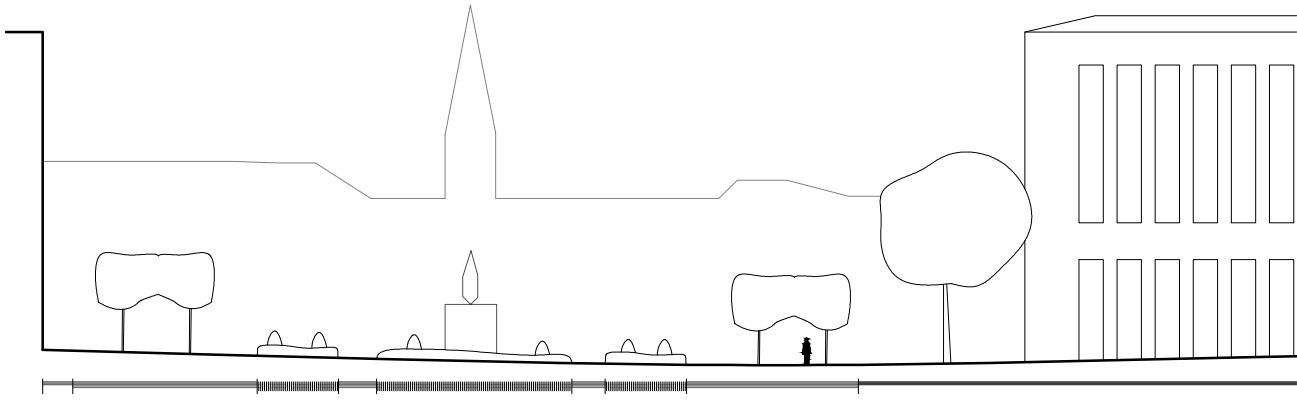
Rue des ursins, Paris



Alignement



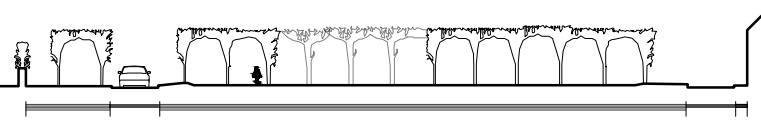
Quai Joffre, Gien



Allée



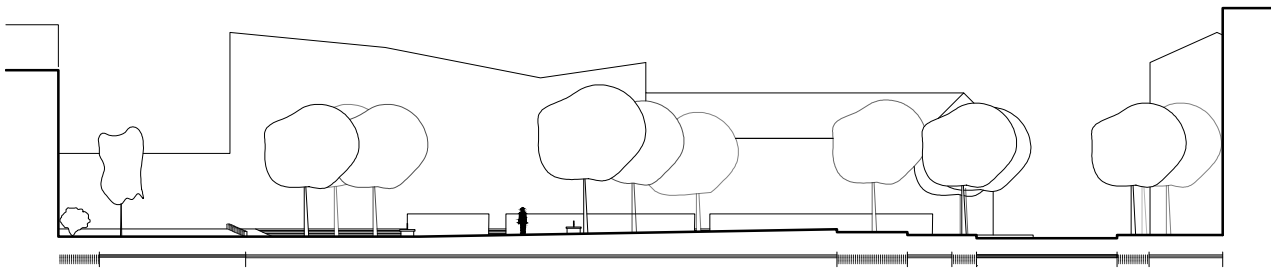
Mont des Arts, Bruxelles



Ordonnancement



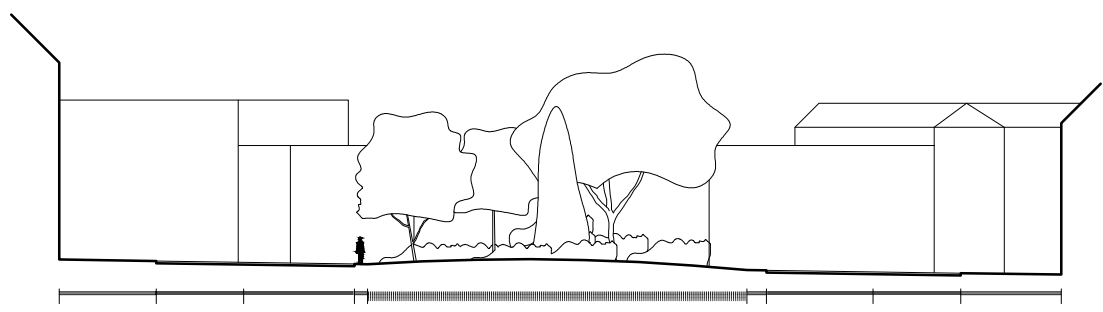
Place Mme de Montesson, Seine-Port



Disposition aléatoire



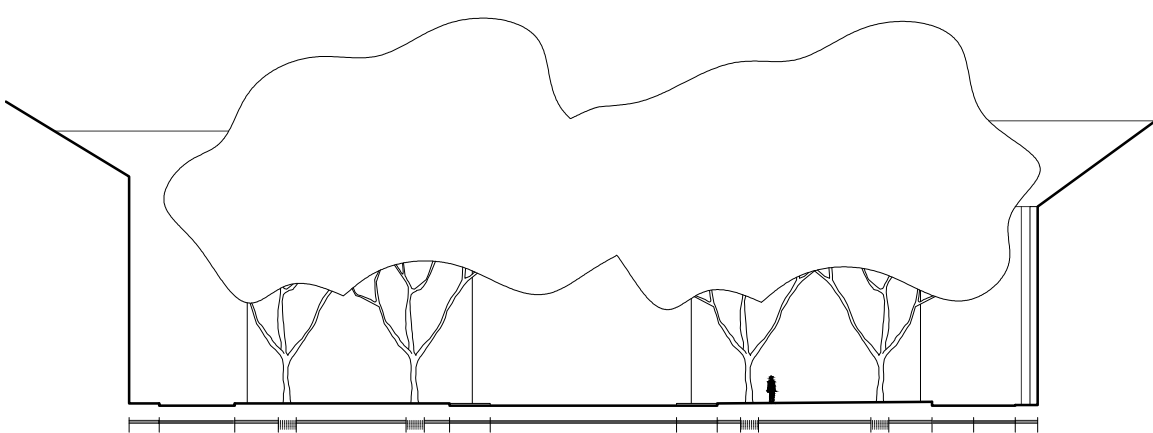
Place de l'Amitié, Amiens



Bosquet urbain



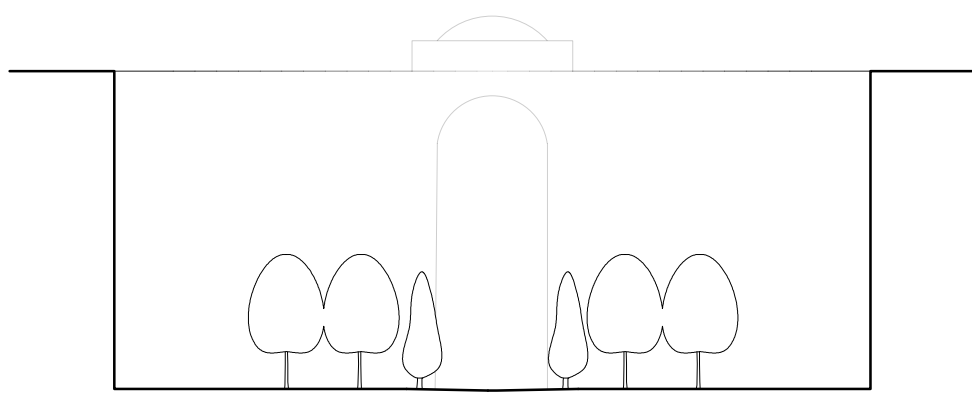
Square Marie José, Bruxelles



Porte



Place du Port Communeau, Nantes



Limite

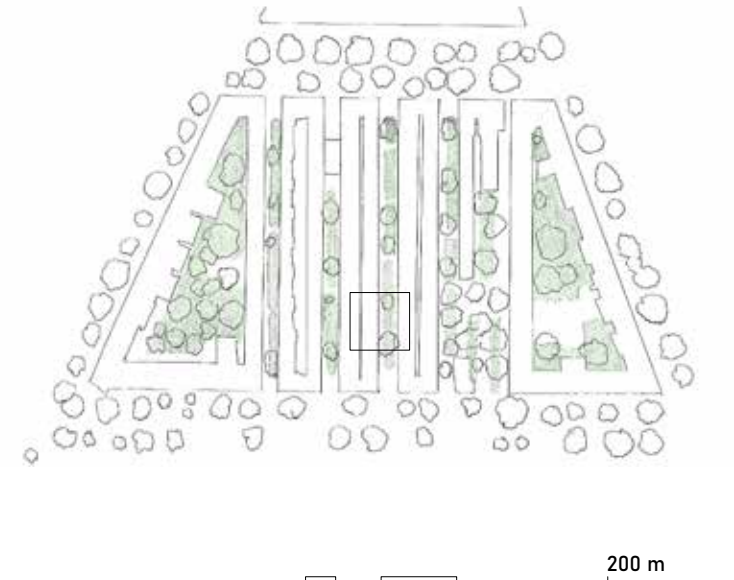
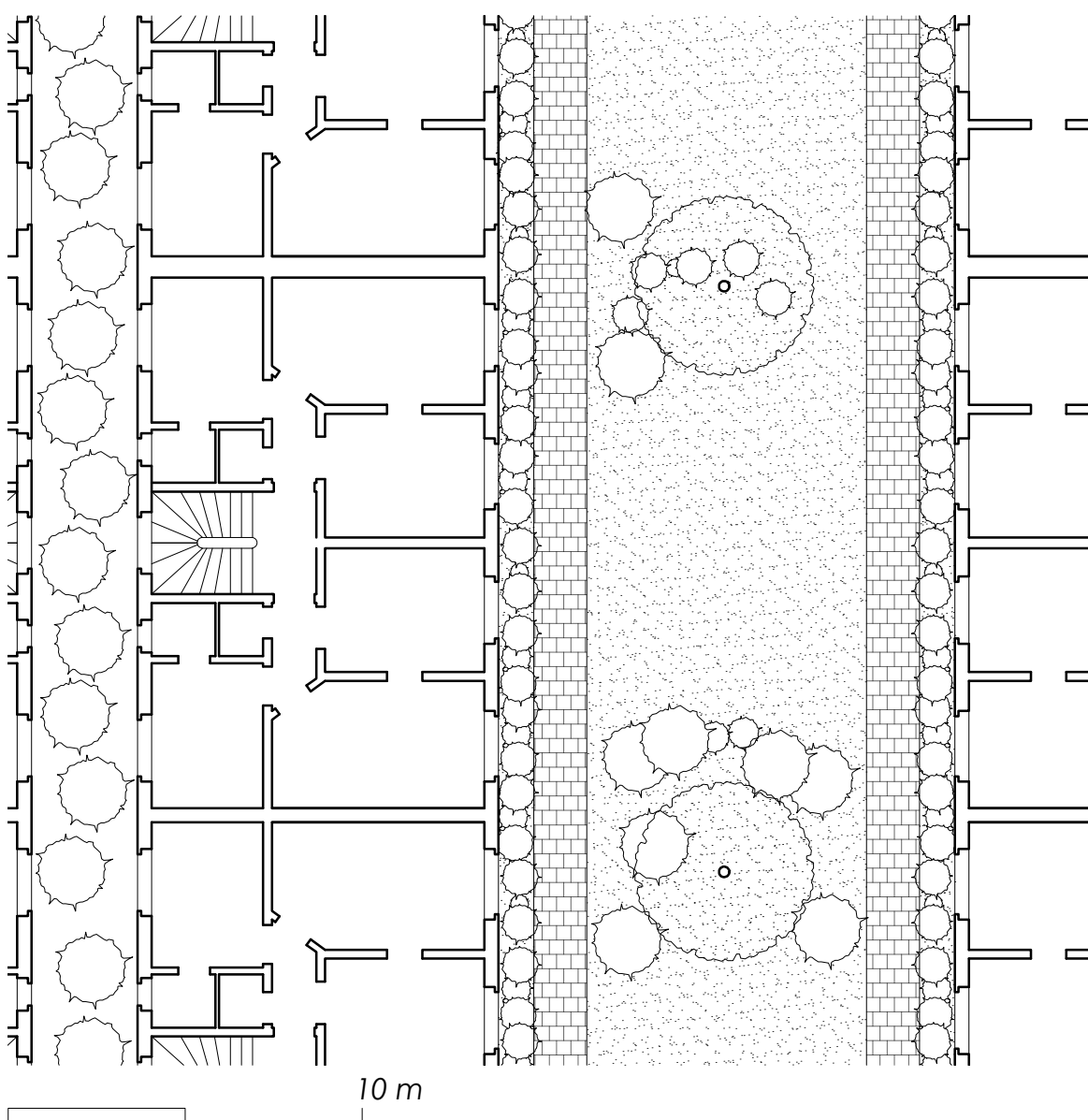


Place du Millénaire, Montpellier

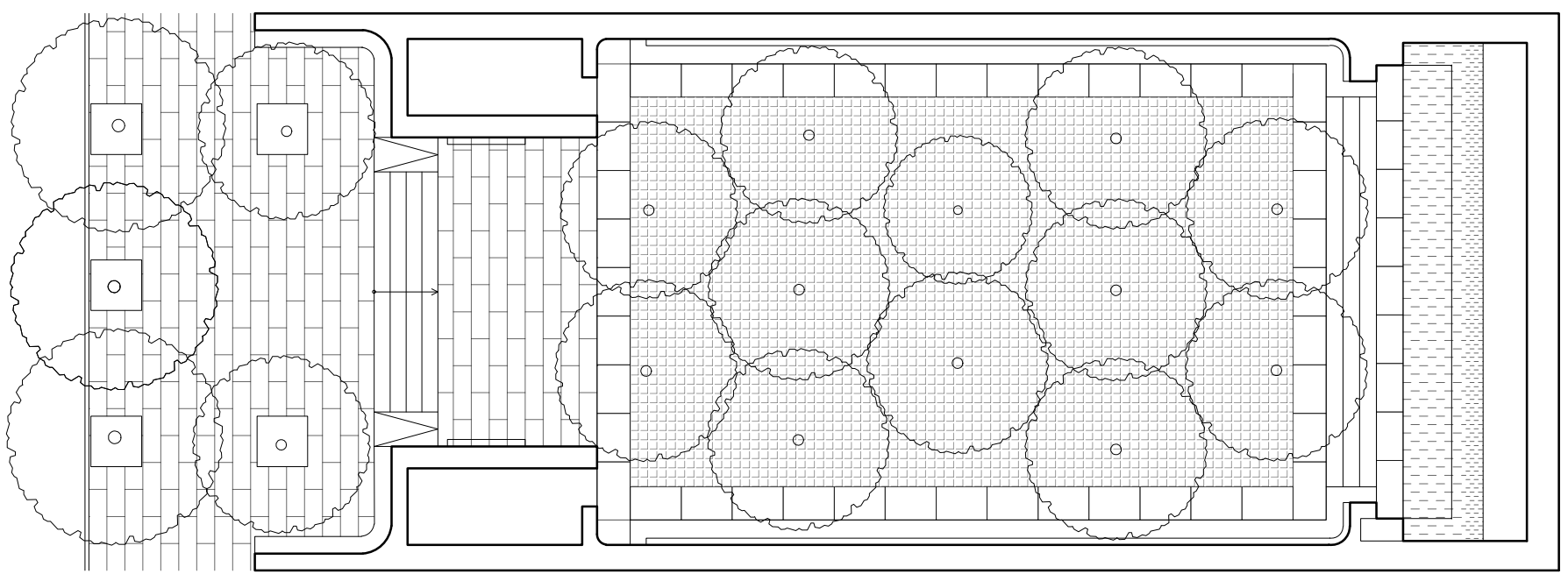
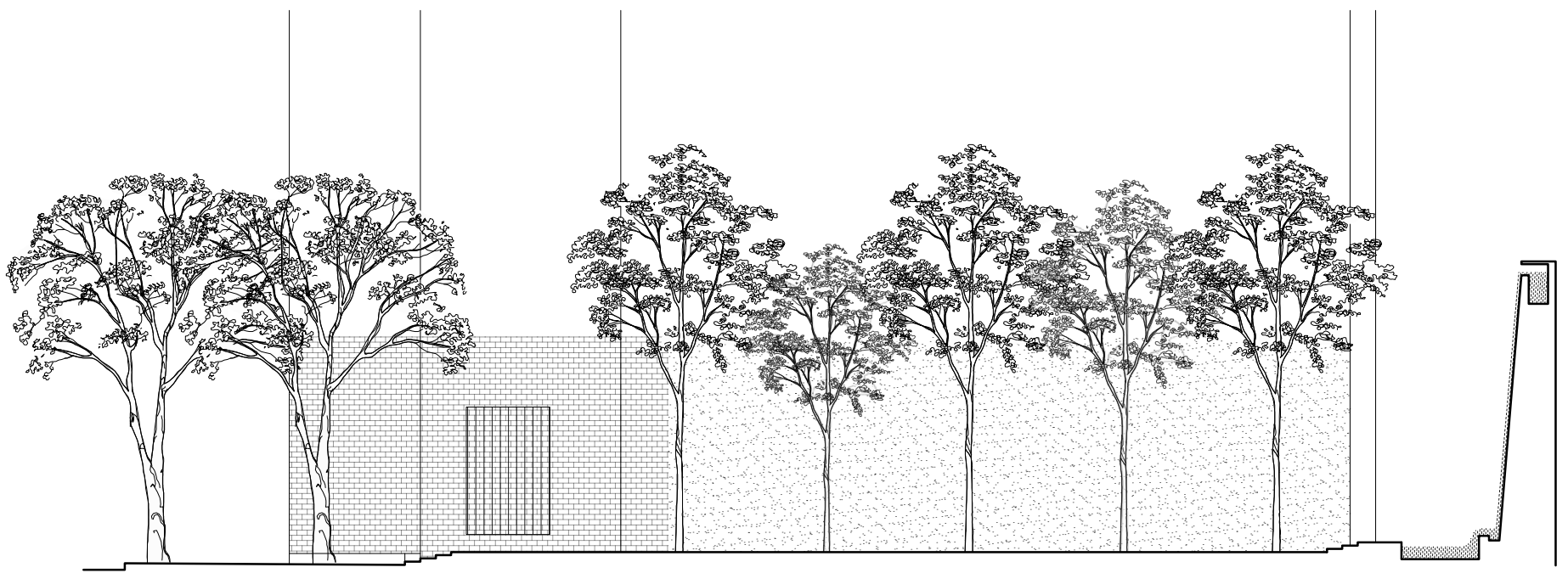


# Urbanisme végétal

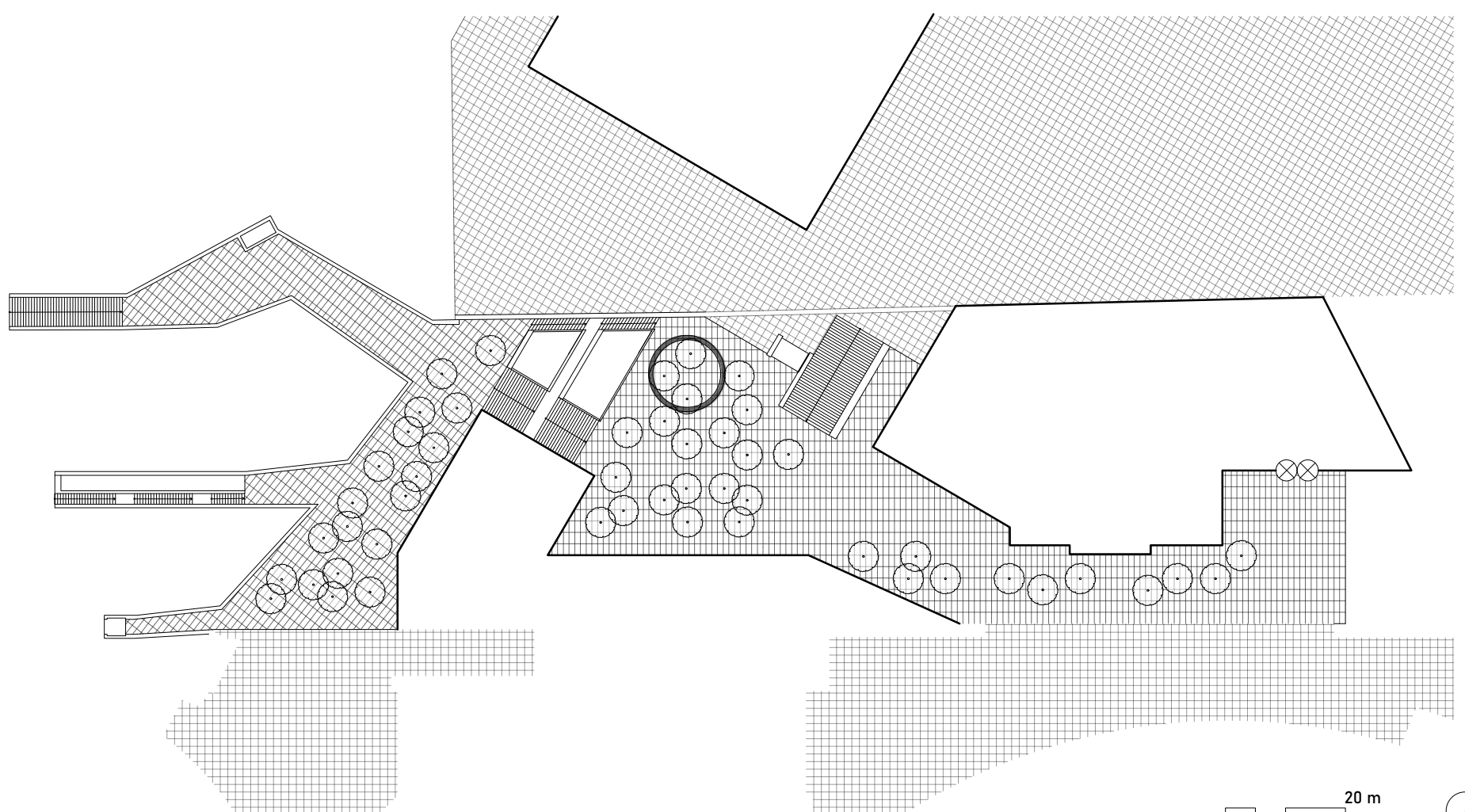
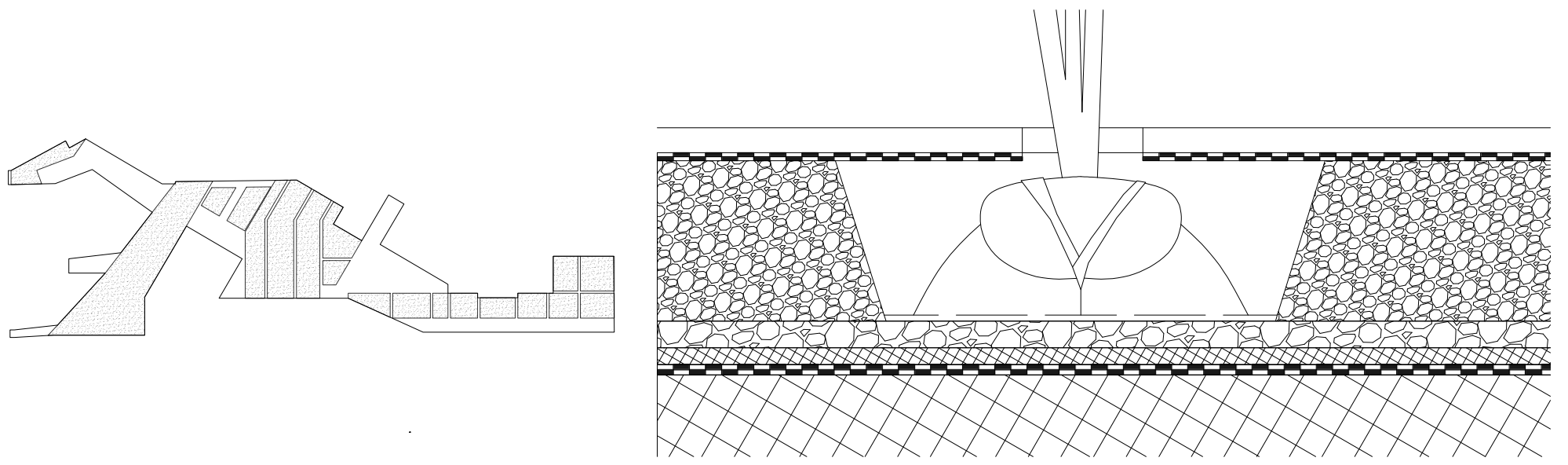
VRANKEN Django



*La rue jardin*  
Falkenried Terrassen, Hamburg



*Le bruit blanc*  
Paley Park, New York, Robert Zion, 1967

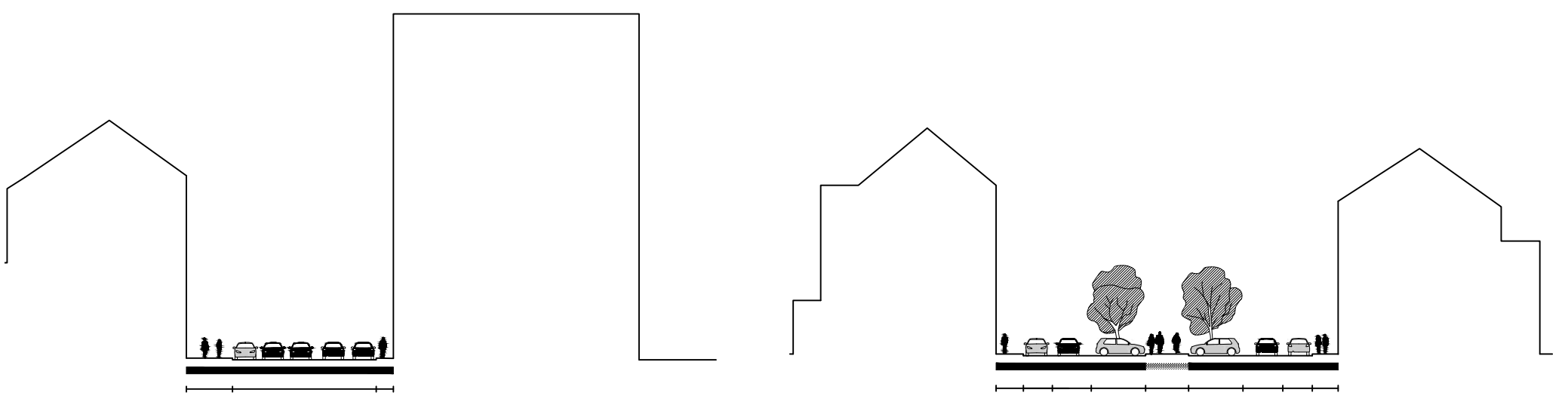


*La plantation*  
Projet Trinity, Paris, Bas Smets, 2020

*Inspirations*

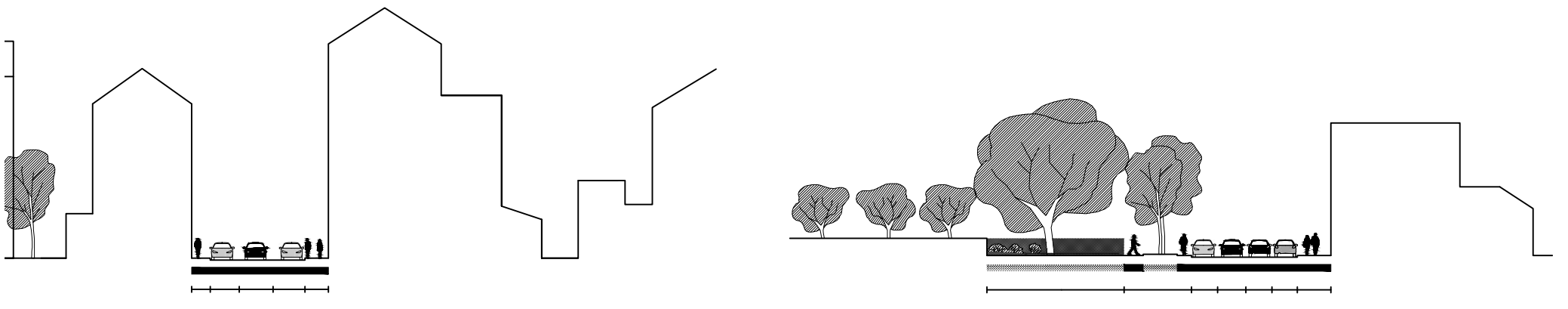
VRANKEN Django





Rue des Deux Gares

Boulevard de la Révision



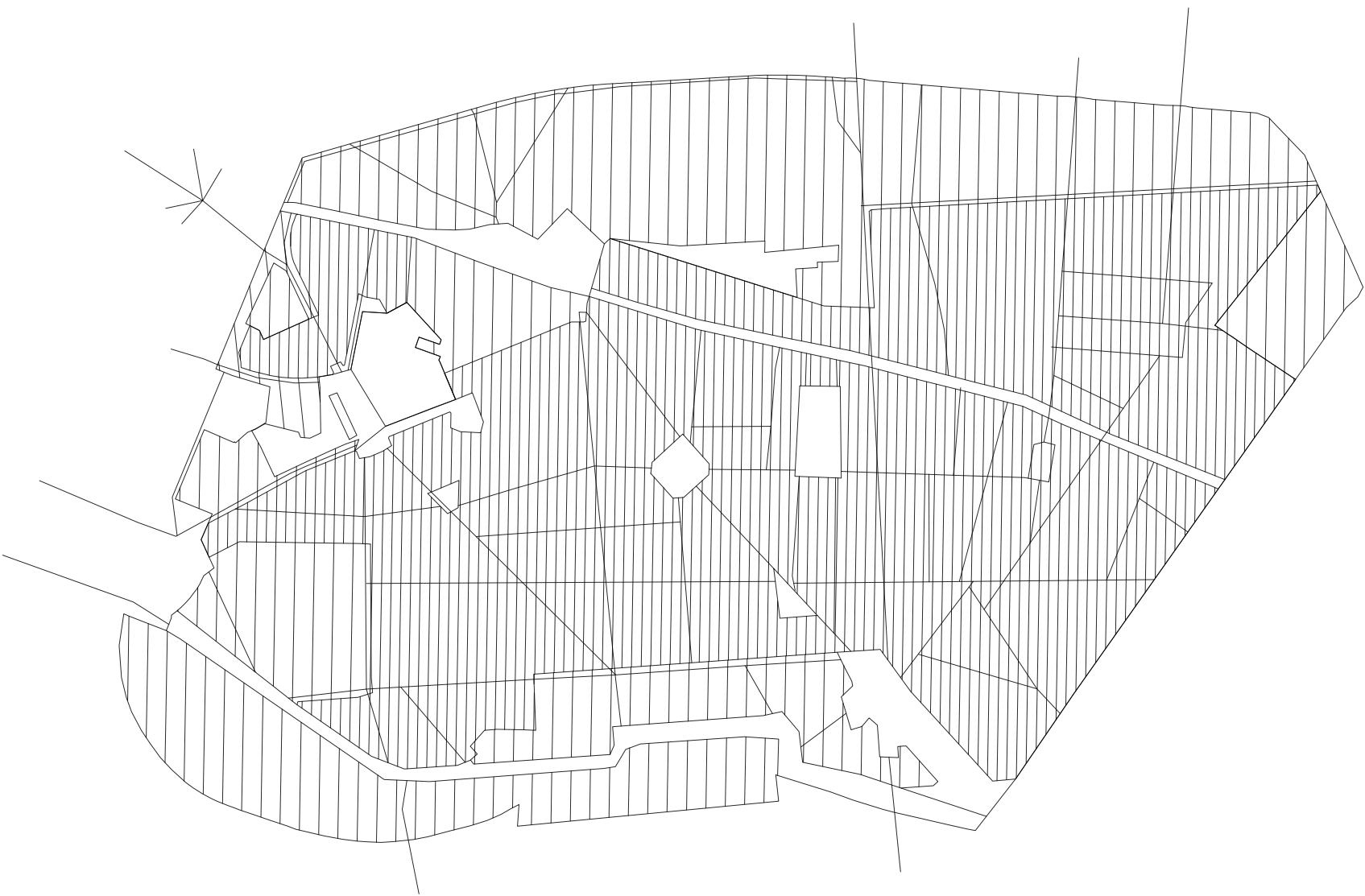
Rue Auguste Gevaert

Rue des Goujons

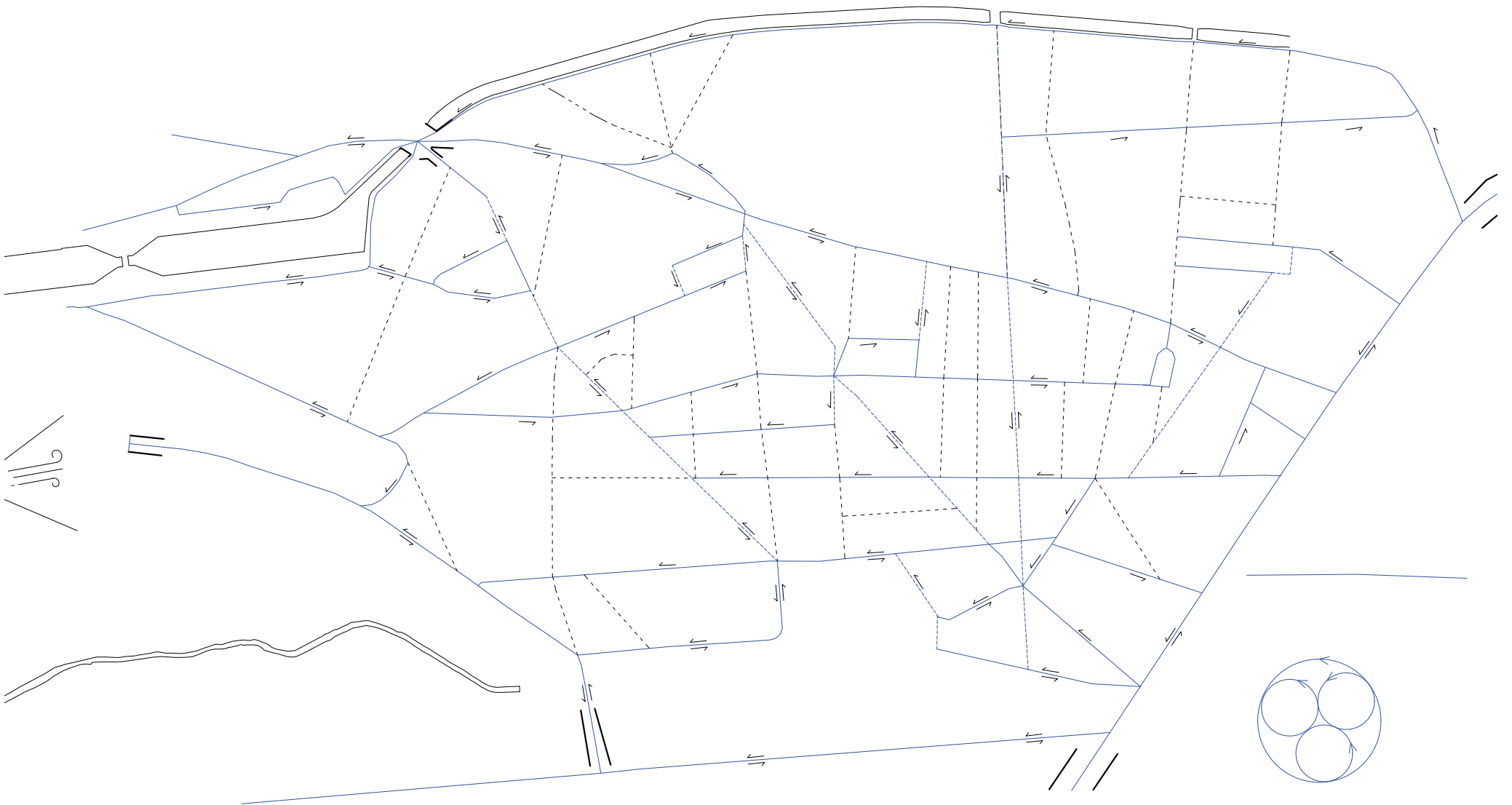
20 m



Réseau écologique



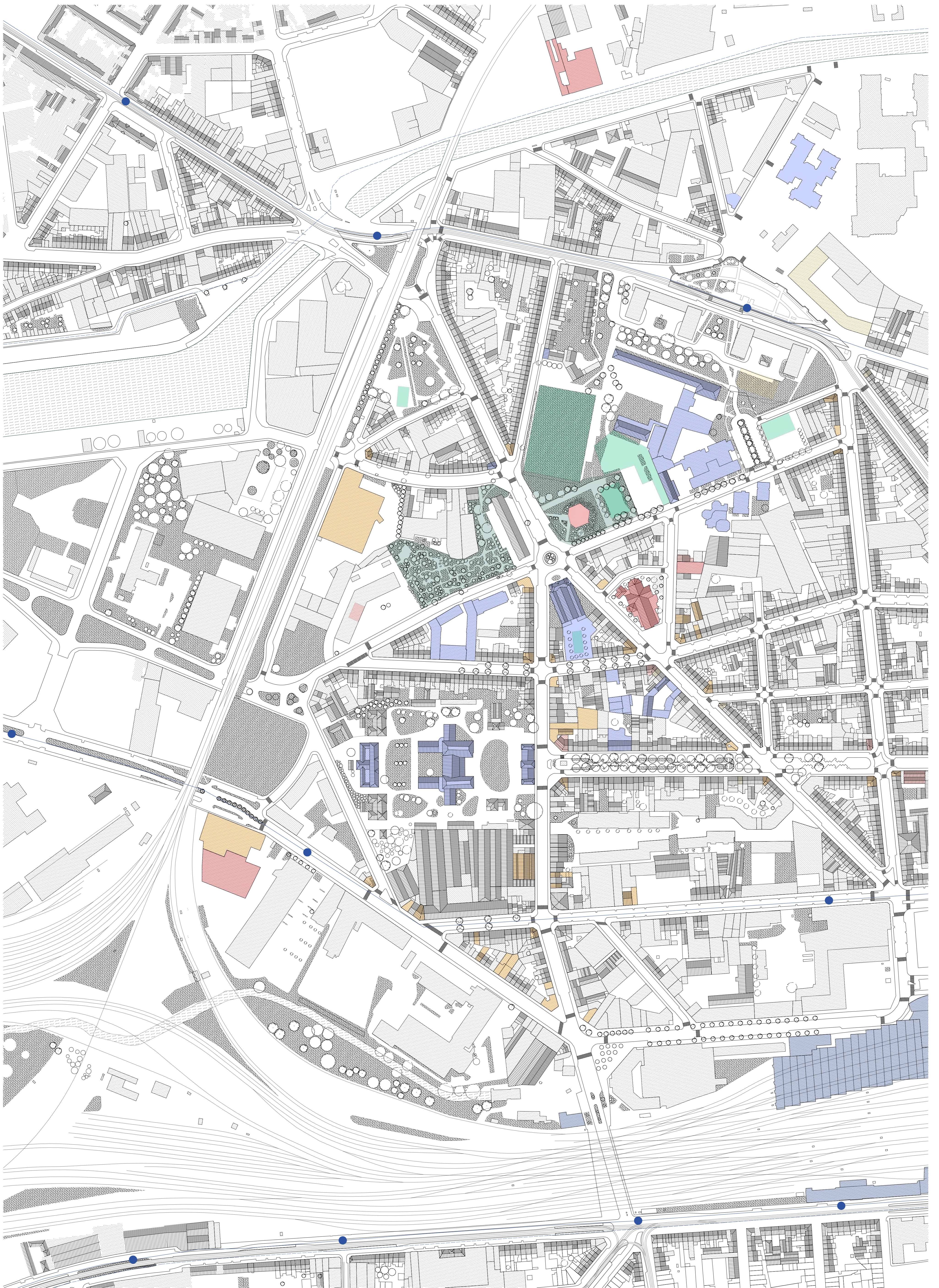
Morphologie



Morphologie



Situation

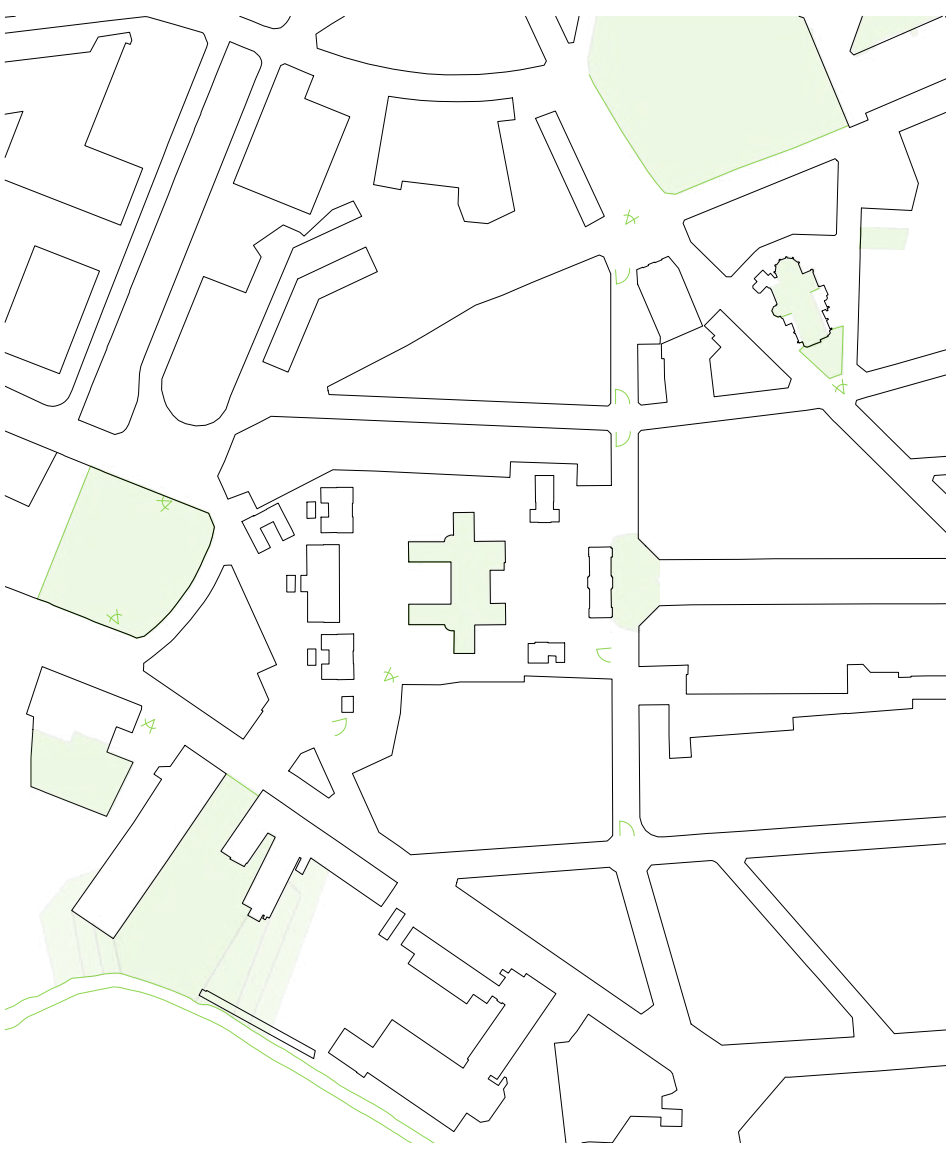


- Parcs (2)
- Infrastructures sportives (5) et plaines de jeux (1)
- Culture (5)
- Pharmacies (5) et cliniques (1)
- Magasins (13), cafés/restos (28) et coiffeur (1)
- Magasins alimentaires (3) et boulangeries (2)
- Mobilité
- Ecoles (8) et crèches (3)

100 m

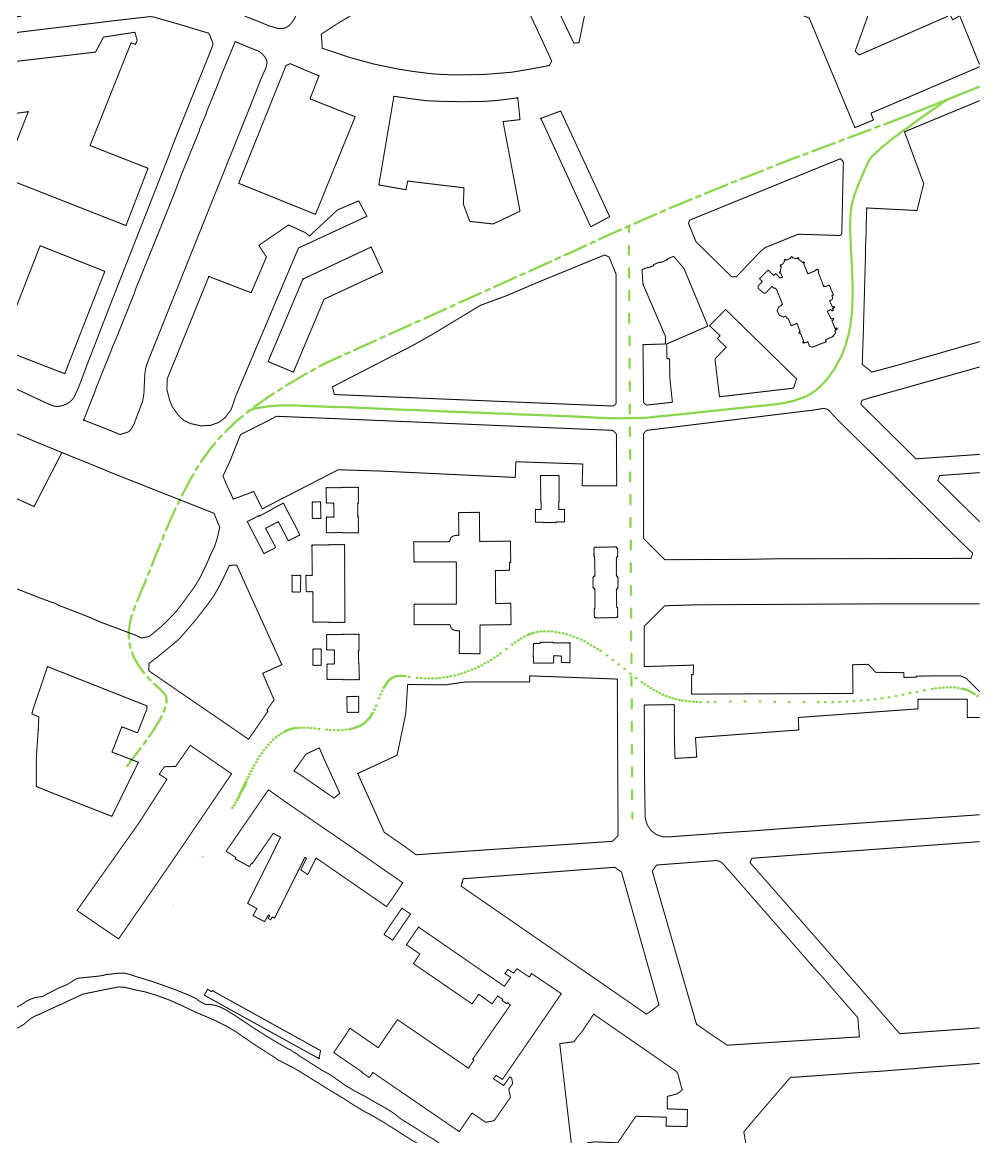
### Cureghem Vétérinaire

Simon KENNES - Django VRANKEN



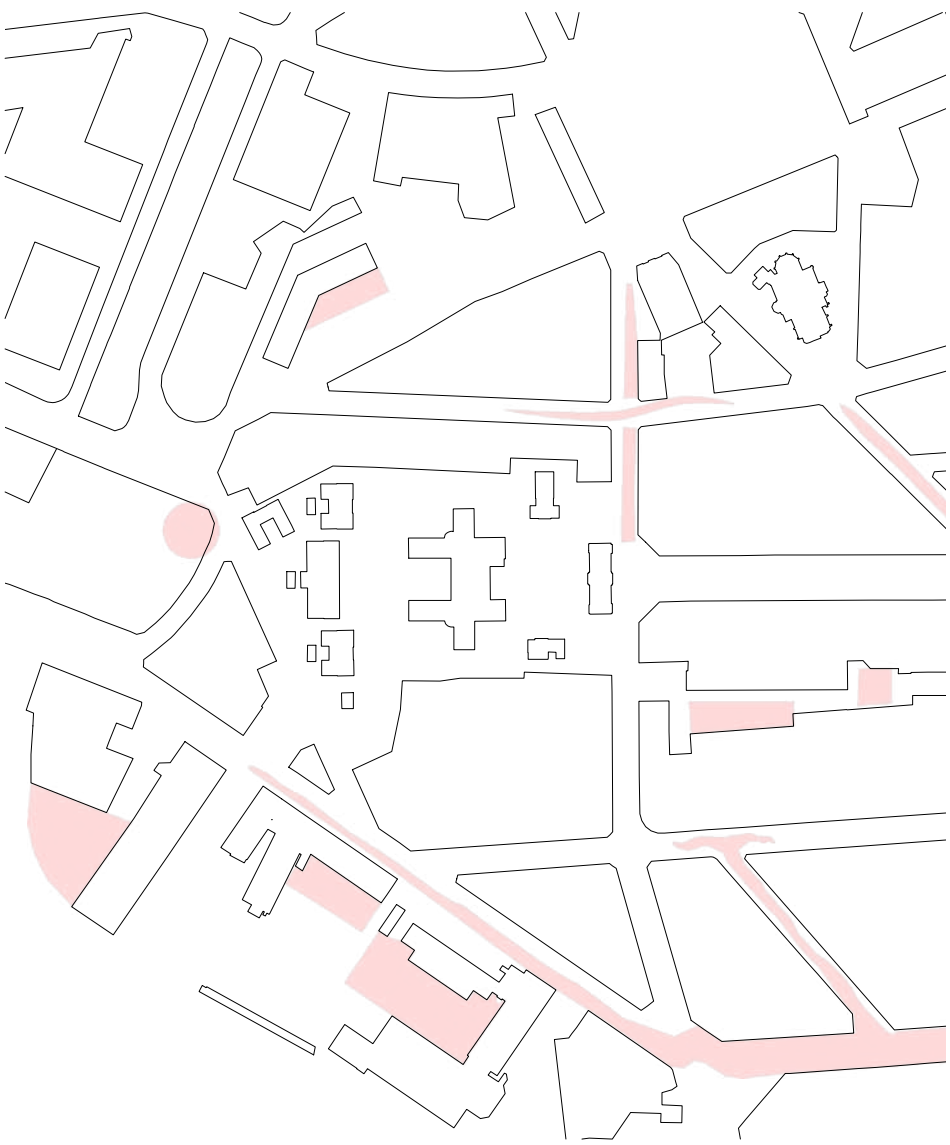
Lieux publics à valoriser

L'arbre comme cadre



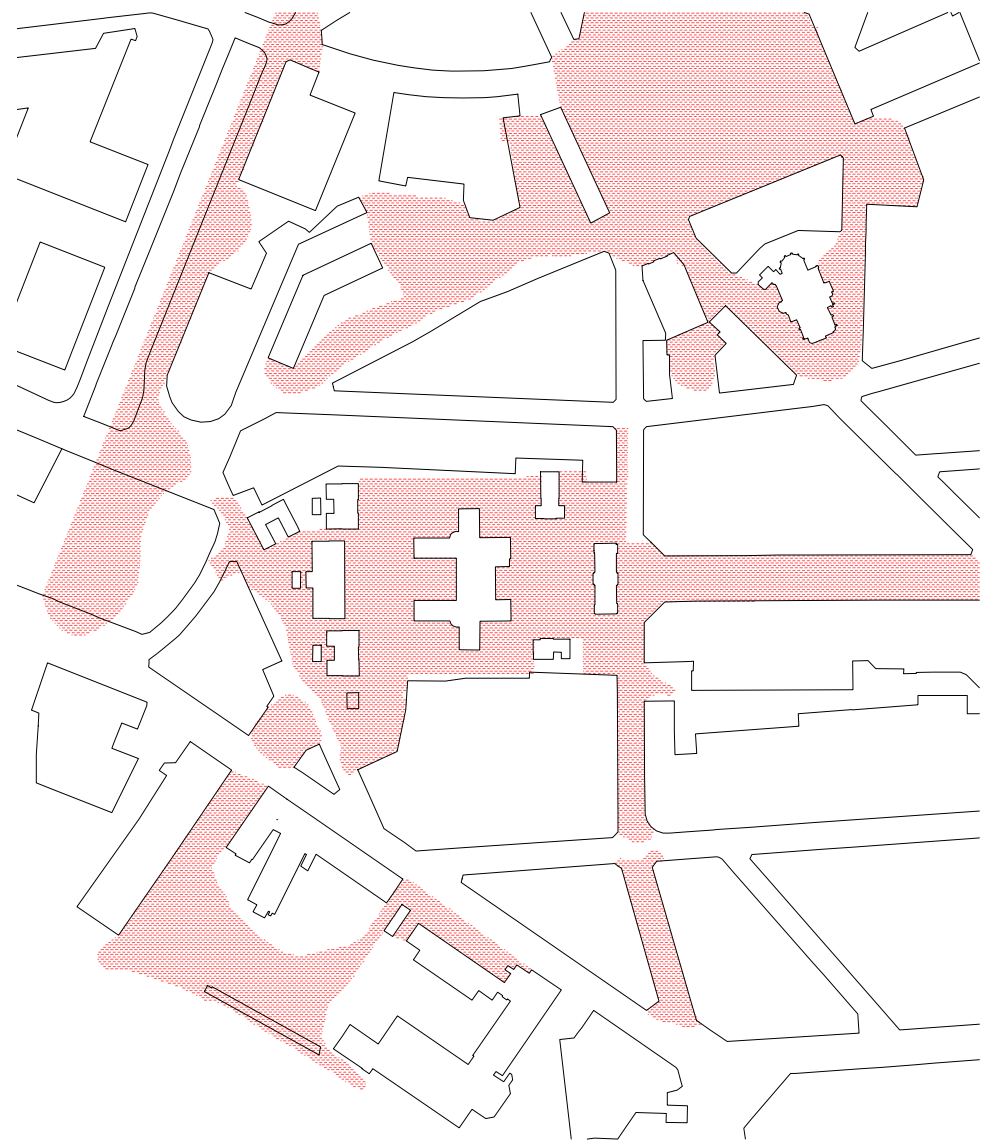
Continuités

L'arbre comme balise



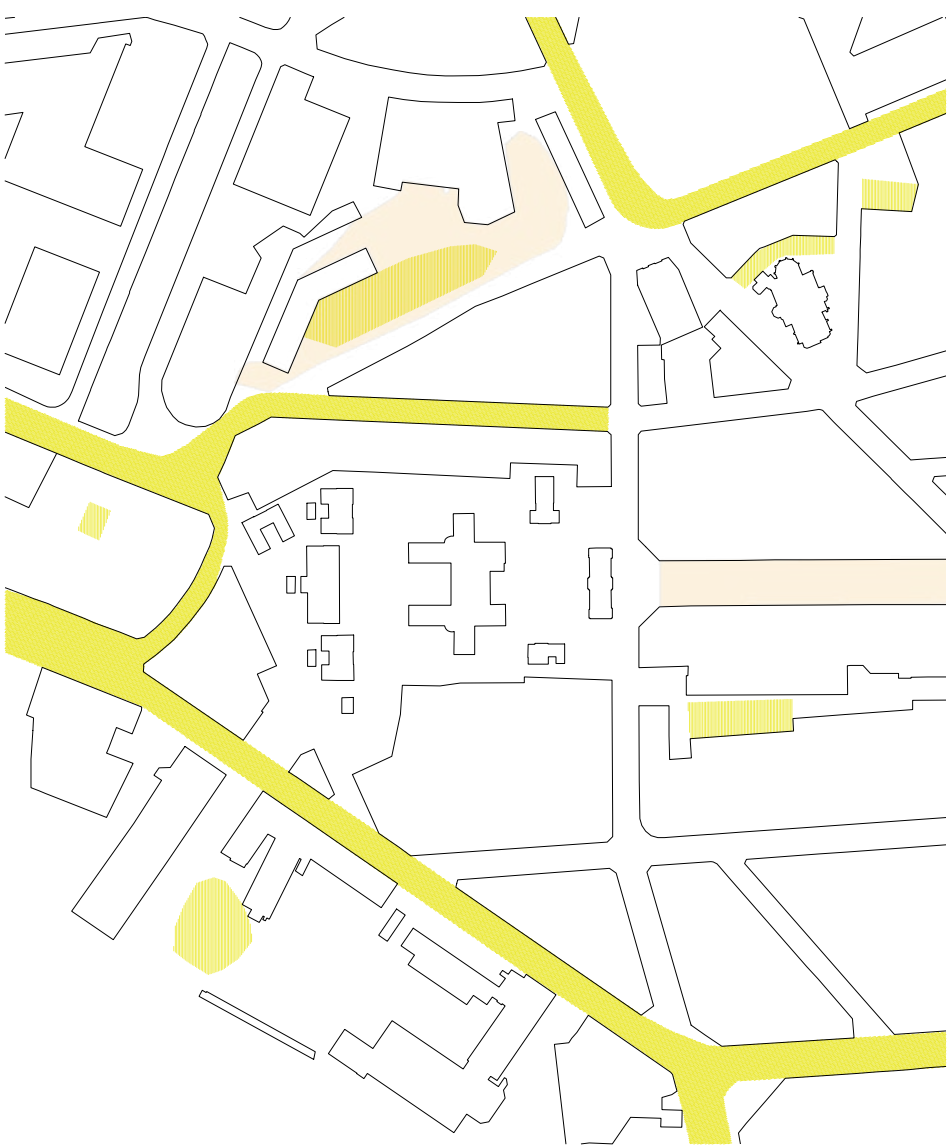
Espaces plus frais

Lieux de flux



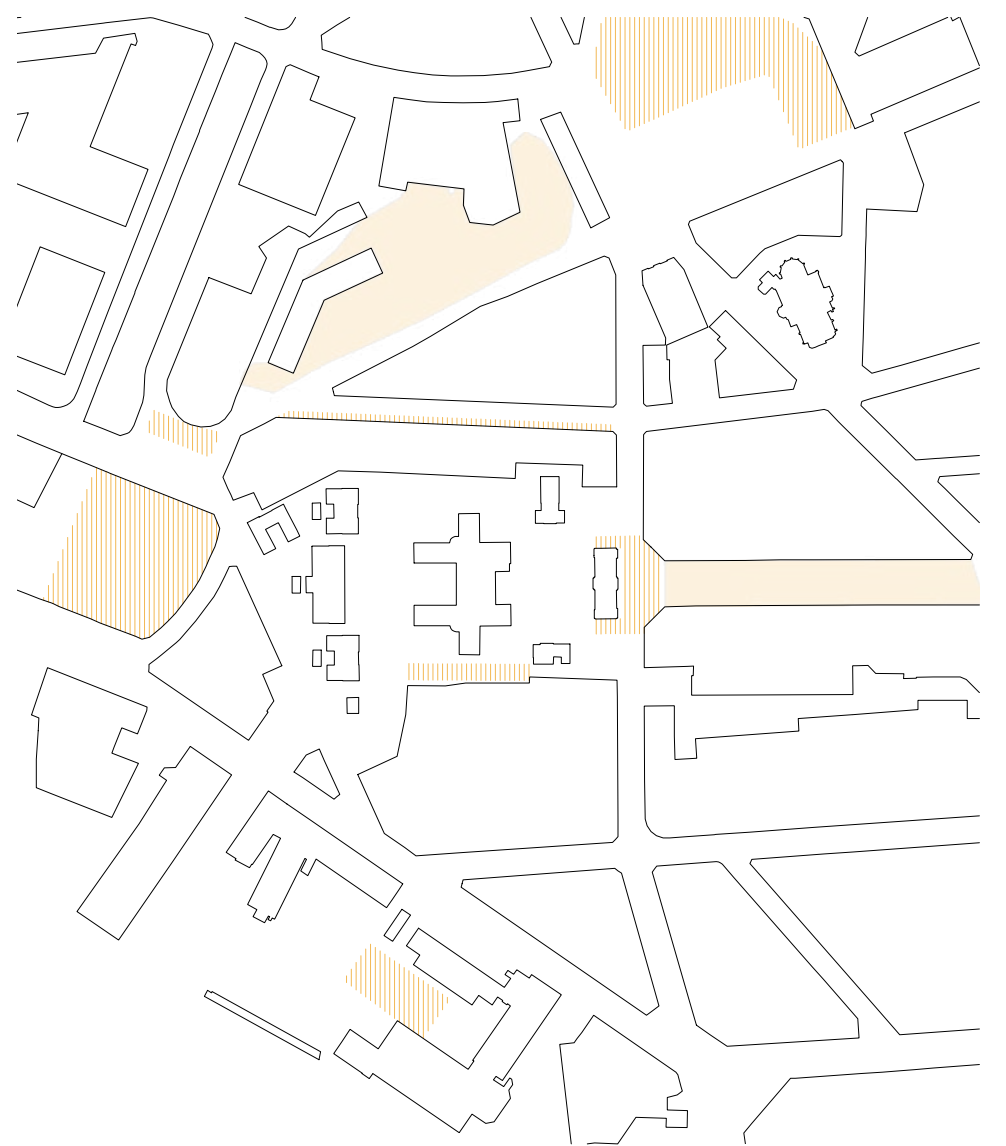
Espaces plus chaud

Solariums



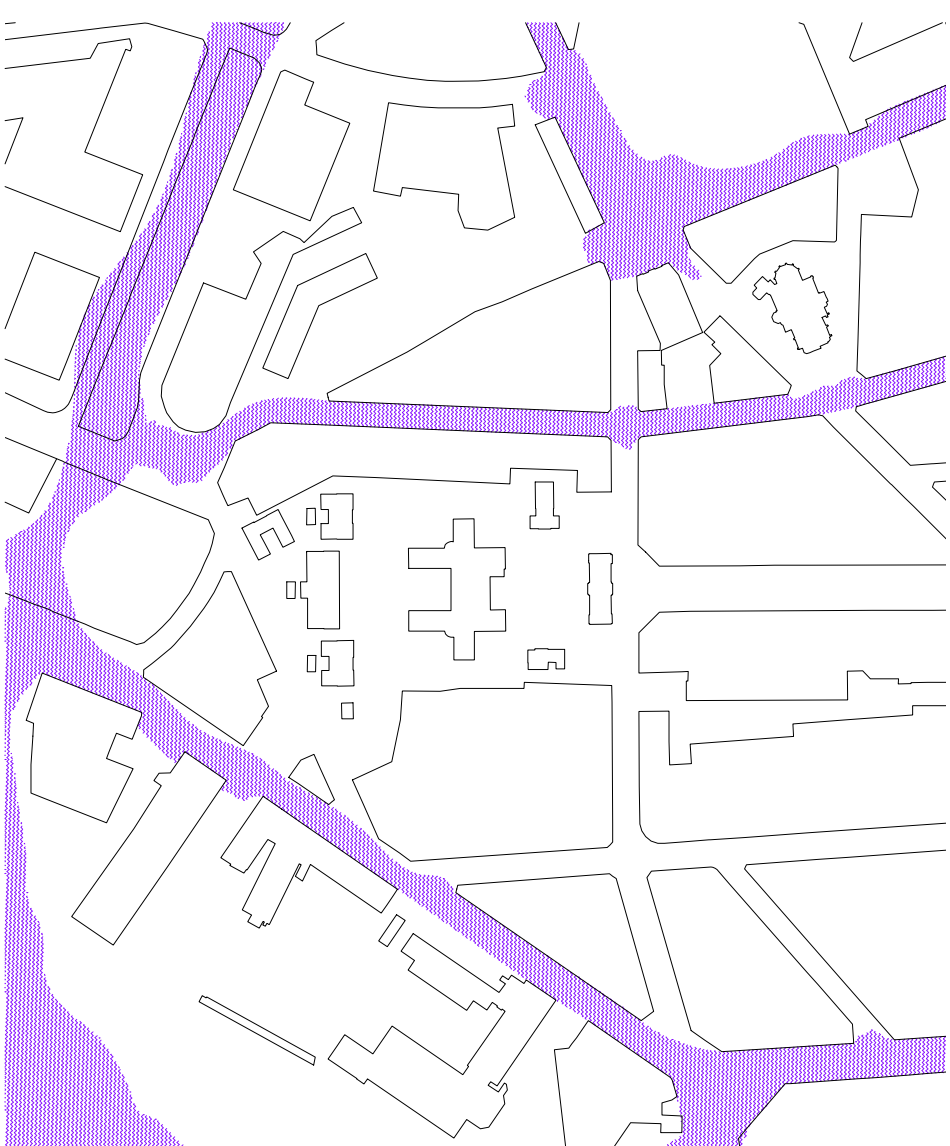
Airs pollués et propres

Trafic automobile et plaines de jeux



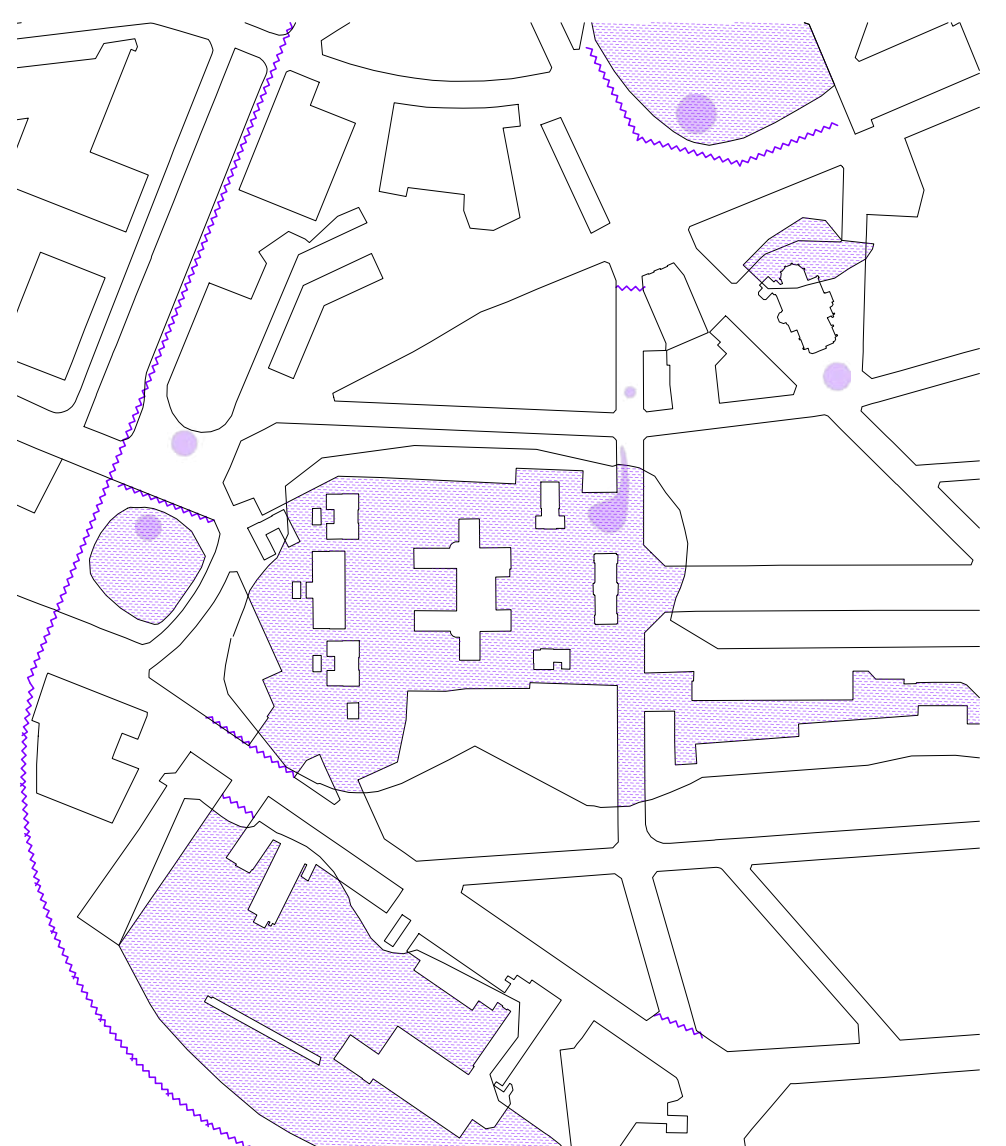
Vents forts et doux

Lieux de flux et infrastructures sportives



Espaces bruyants

Trafic automobile et ferroviaire, commerces



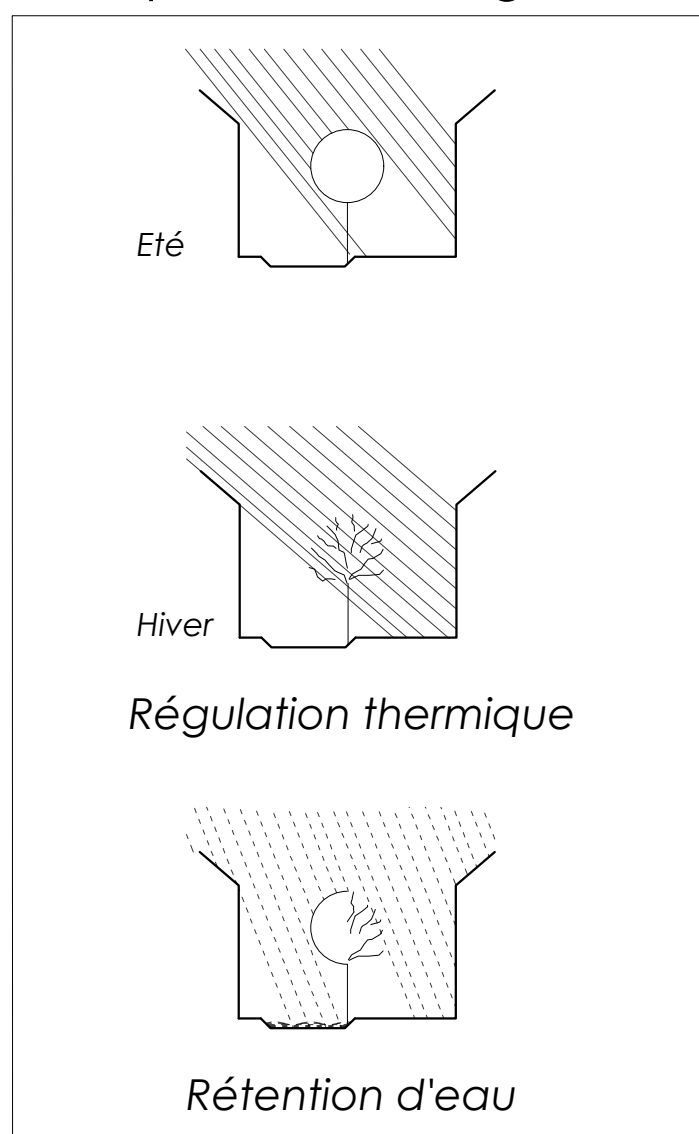
Espaces calmes

Parcs, cafés, loisirs

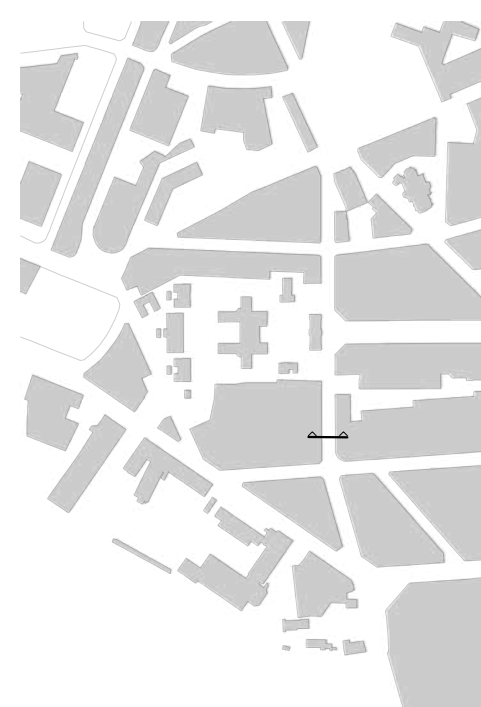


Ambiances et fonctions

Principes d'aménagement



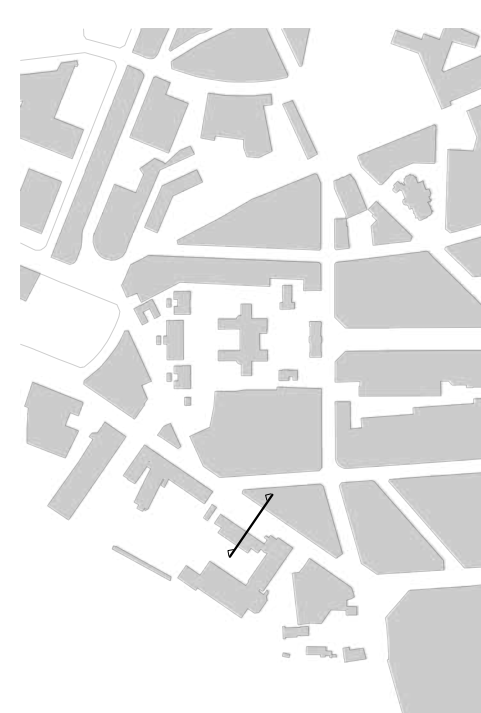
La rue



Rue des Vétérinaires



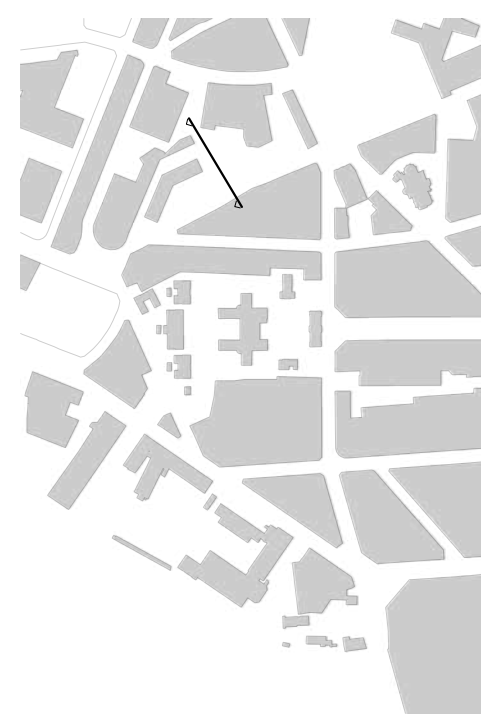
La chaussée



Rue des Deux Gares



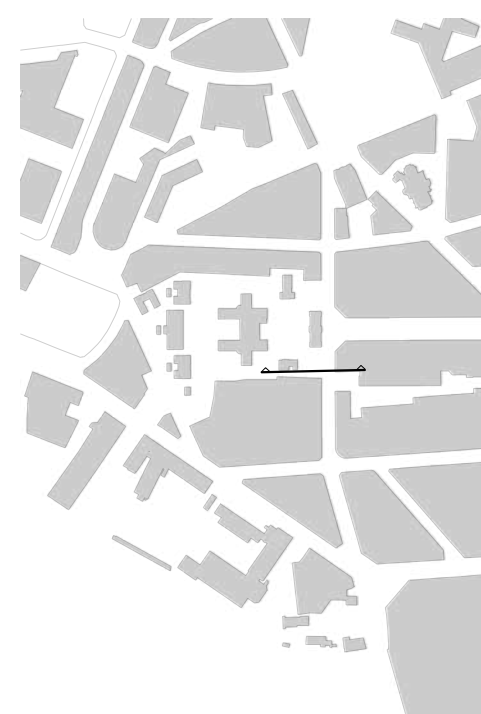
Le parc



Rue des Goujons



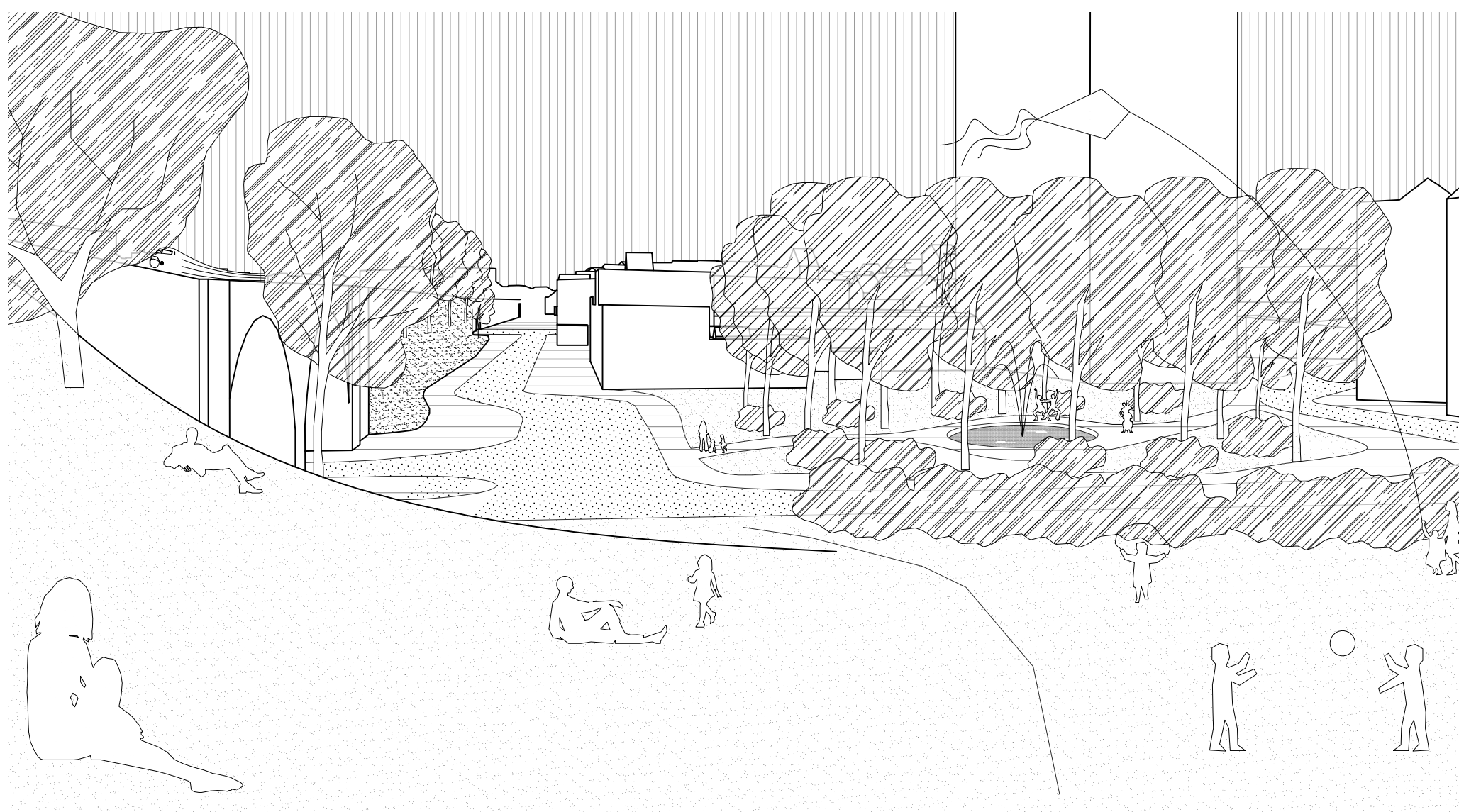
La rue ouverte sur l'îlot



Rue des Vétérinaires



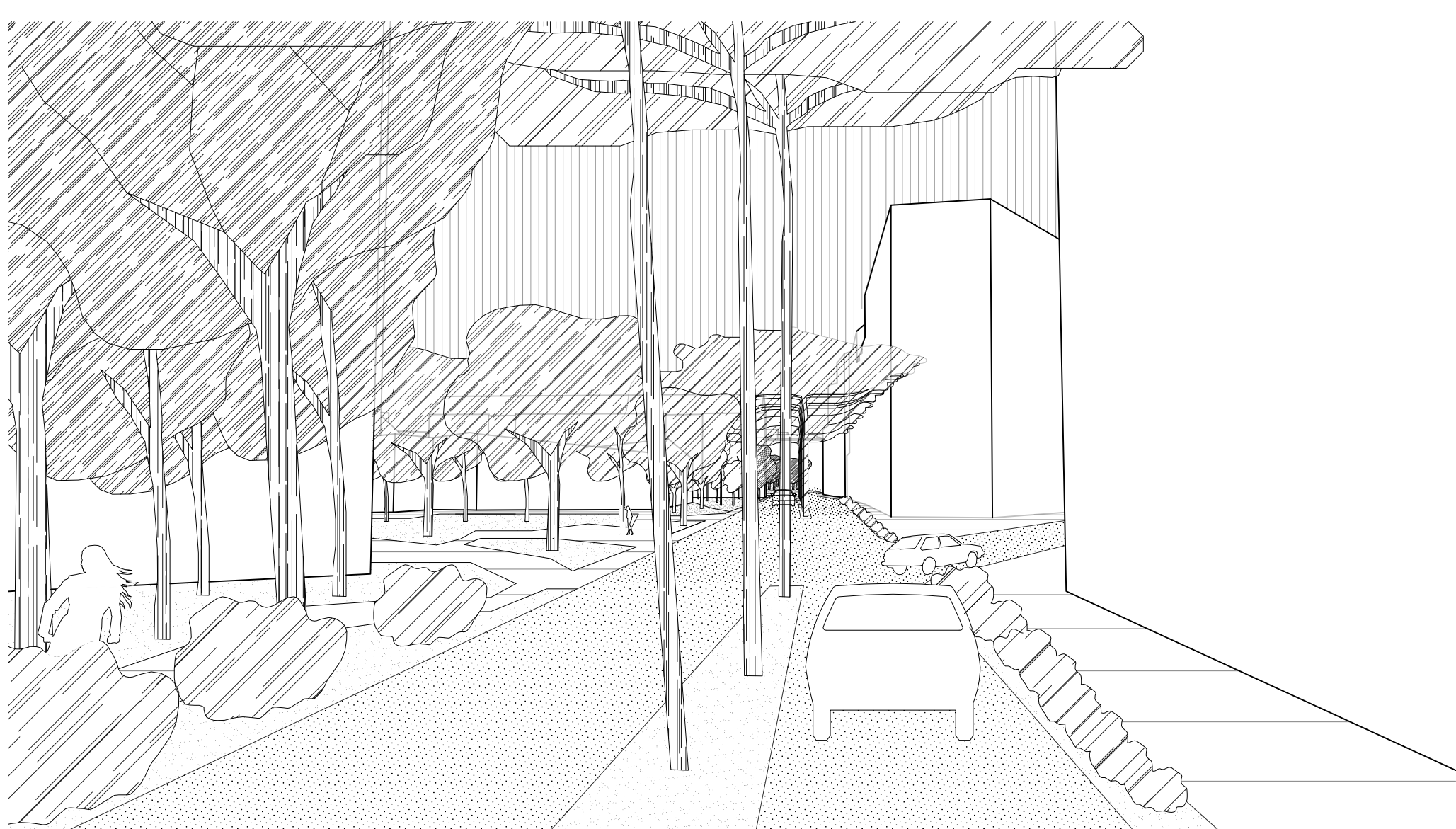
Morphologies



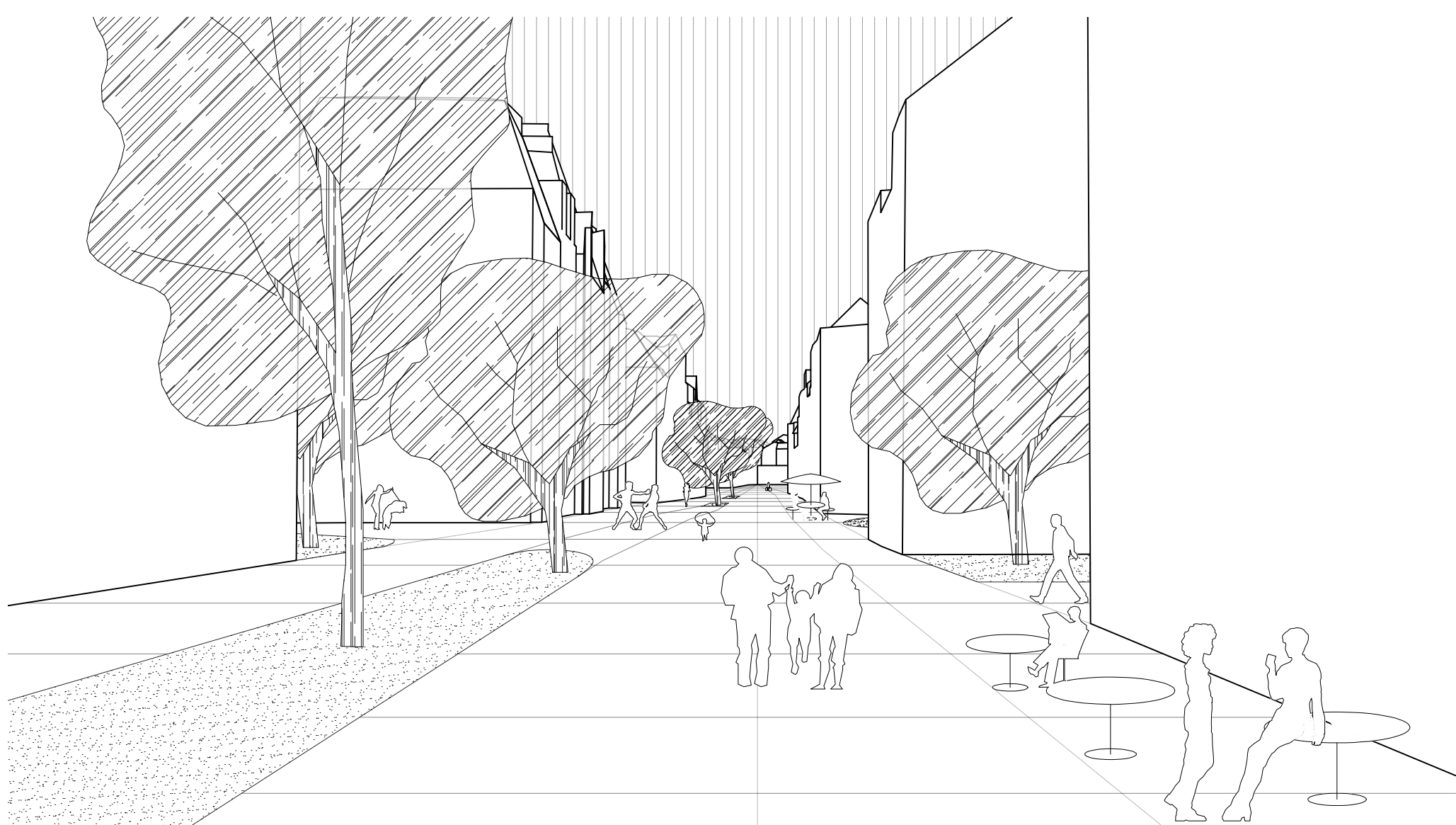
*Protections sonores*



*Cadre et continuités*

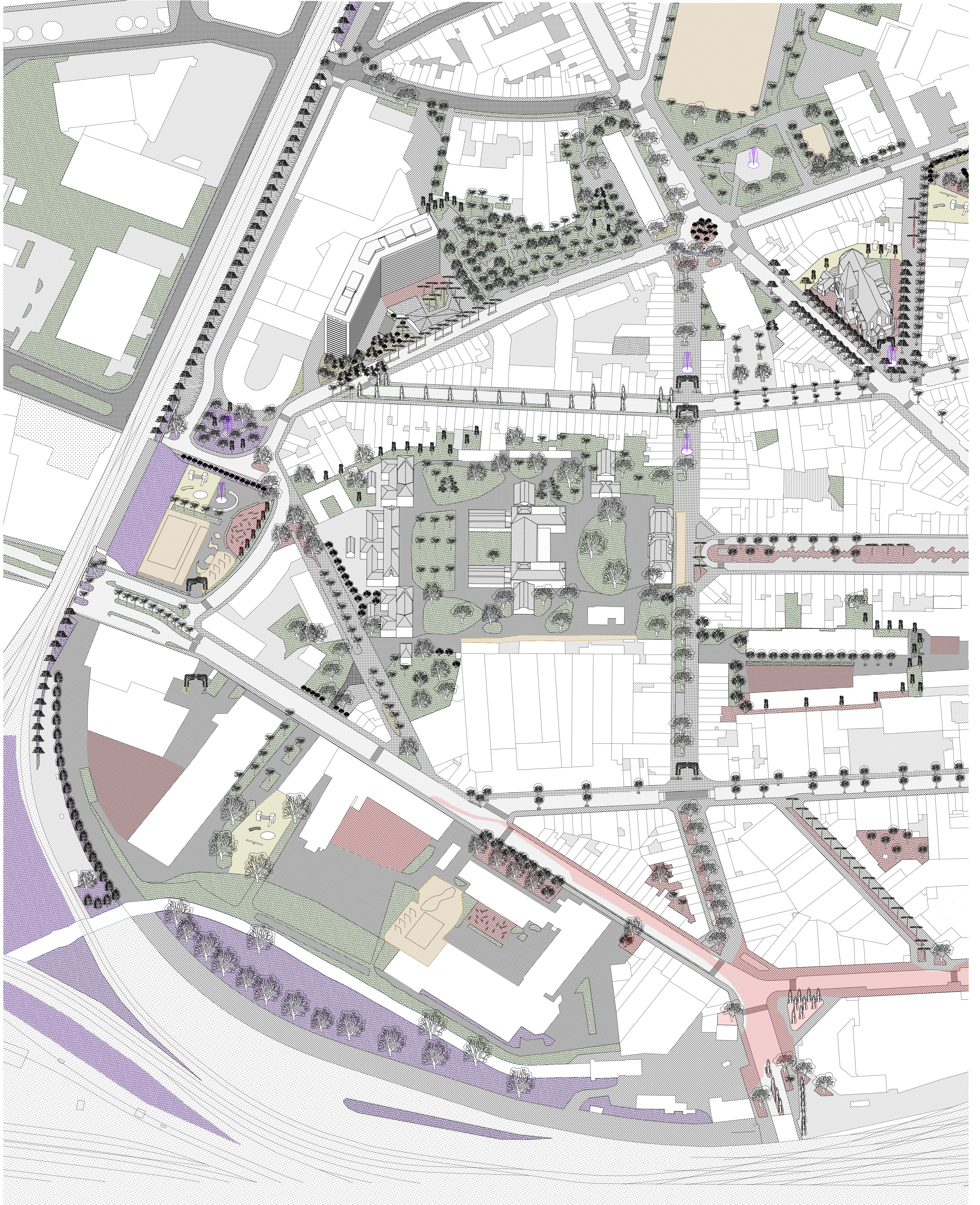


*Protection des vents*



*Continuités*

*Perceptions*





2 m

Matérialités

VRANKEN Django