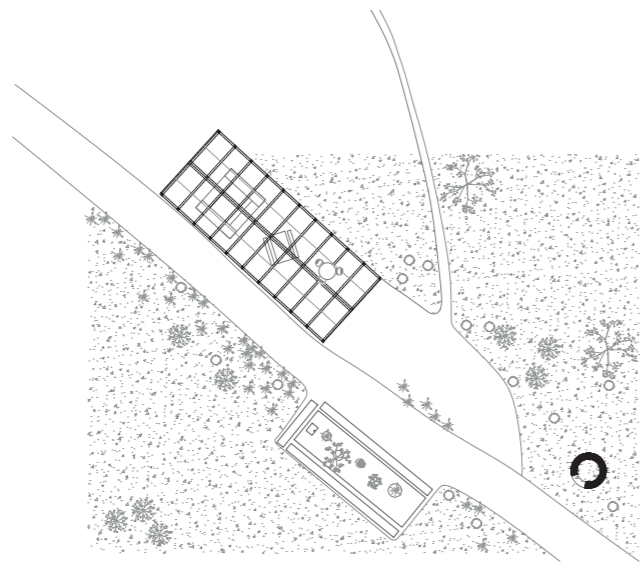
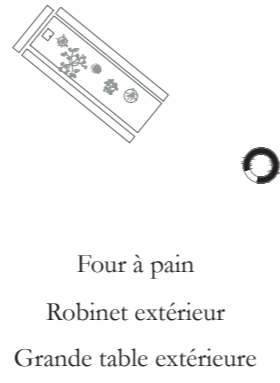


**CUISINE PÉRIURBAINE**  
Cuisine au coeur des champs

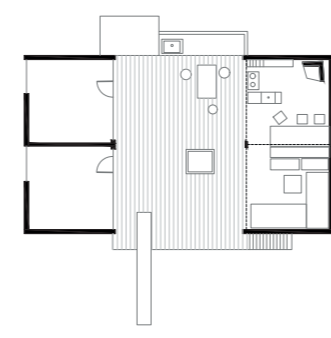


**Parckfarm**  
Alive architectes

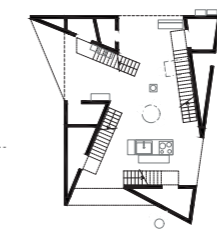


Four à pain  
Robinet extérieur  
Grande table extérieure

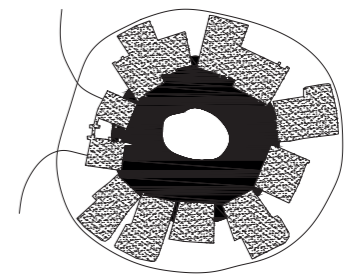
Rapport à l'extérieur



**Cuisine extérieure**  
La petite maison au bord de l'eau  
Charlotte Perriand  
1936

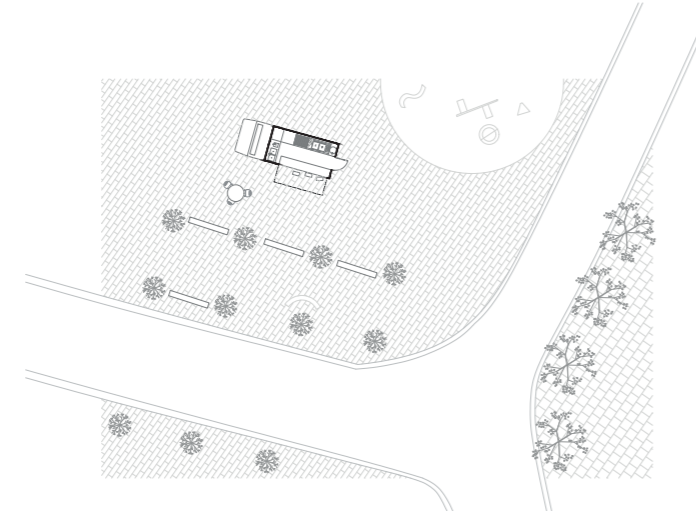


**Cuisine extérieure couverte**  
Yokobama apartment  
ON design partners  
2009

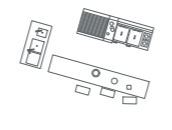


**Foyers mobiles dans un espace central couvert**  
Maison à impluvium

**CUISINE NOMADE**  
Cuisine mobile dans la ville



**Foodtruck**  
Modèle générique

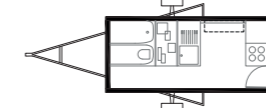


Gazinière mobile  
Réservoir et pompe  
Bar et bancs publics

Practicité

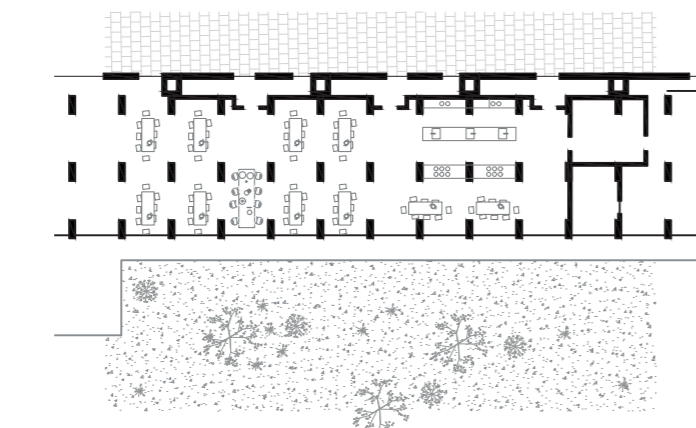


**Wagon-Buffer**  
Ernest Neufert

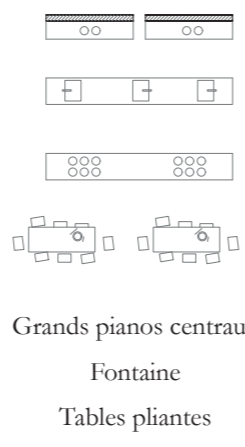


**Noyau mécanique transportable**  
Buckminster Fuller  
1943

**CUISINE DE QUARTIER**  
Cuisine ponctuelle dissociée du logement

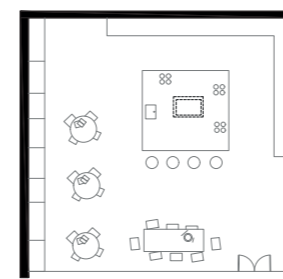


**Goodlife! Mekan**  
DP Architects



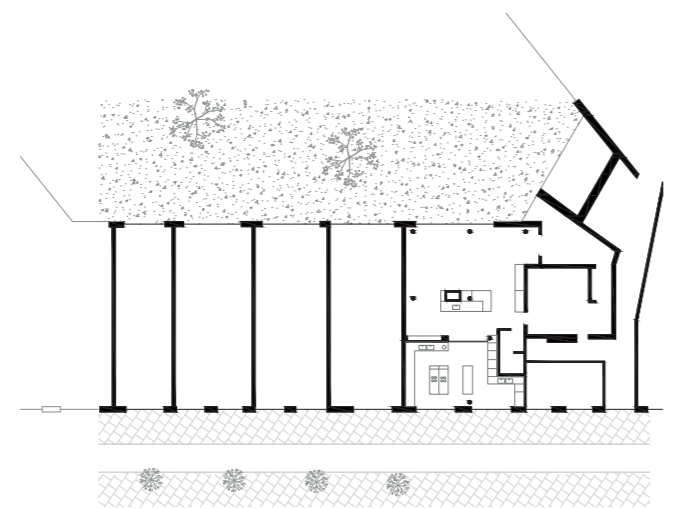
Grands pianos centraux  
Fontaine  
Tables pliantes

Solidarité

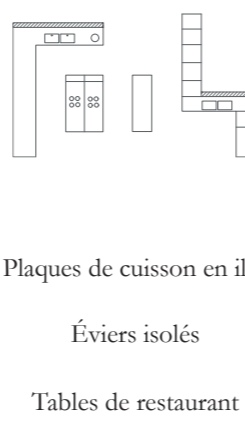


**Kodomo**  
Care Yoshikawa  
Chie Konno  
2019

**CUISINE COMMUNAUTAIRE**  
Cuisine quotidienne AVEC prestataire

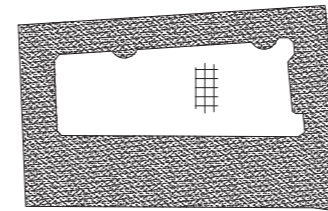


**Kalkbreite**  
Müller Sigrist Architekten

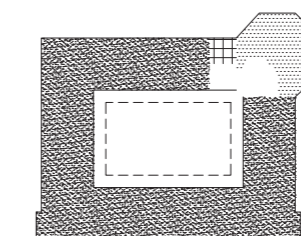


Plaques de cuisson en îlot  
Éviers isolés  
Tables de restaurant

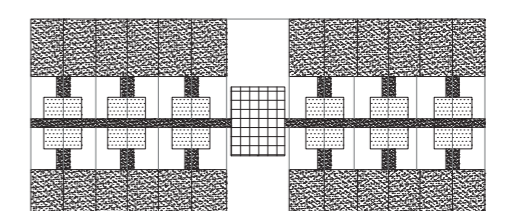
Rapport au logement



**Centralisation en coeur d'îlot**  
Maisons sans cuisines  
Hemgarden  
Georg Hagström et Fritiof Ekman  
1906



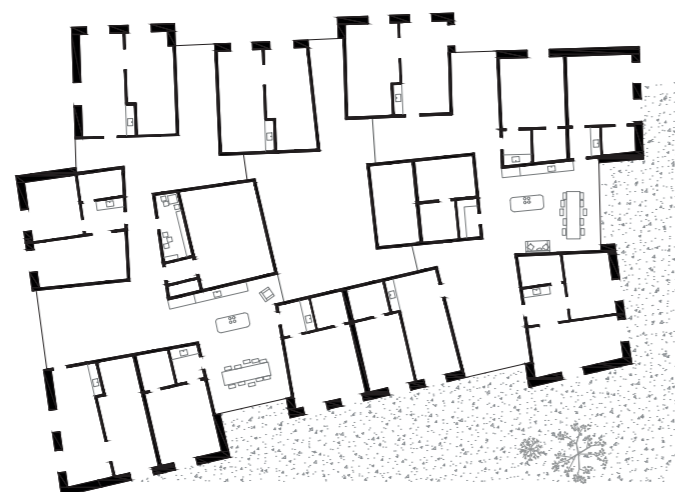
**Refectoire**  
Additionnel aux cuisines privées  
Familistère de Guise  
Jean-Baptiste Godin  
1859



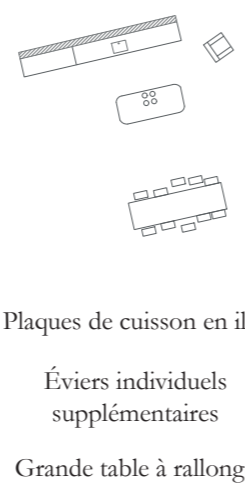
**Externalisation des salles à manger**  
Logements expérimentaux  
Leonard E. Ladd  
1910

■ Logement    ▤ Cuisine    ▨ Espace dinatoire

**CUISINE PARTAGÉE**  
Cuisine quotidienne SANS prestataire

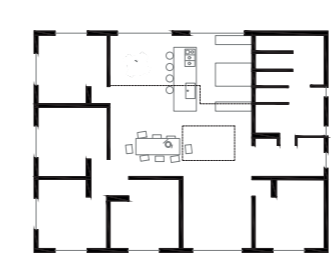


**Mehr als Wonen**  
Duplex architectes

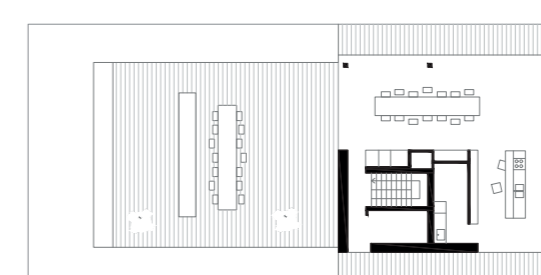


Plaques de cuisson en îlot  
Éviers individuels supplémentaires  
Grande table à rallonge

Appropriation

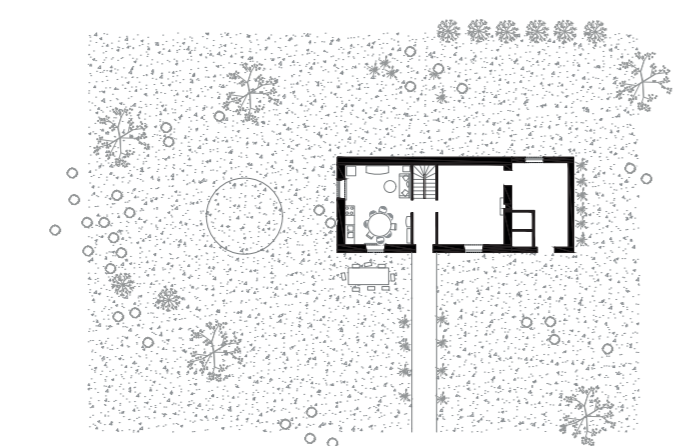


**Intermédiaire avec les chambres**  
LT Josai  
Naruse Inokuma Architects  
2013

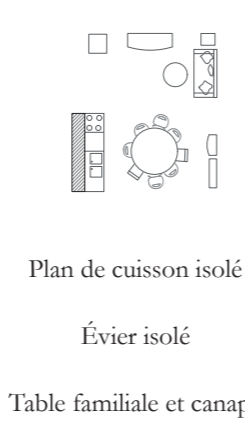


**Espace supplémentaire polyvalent**  
Habitat groupé Tiroli  
Epoce architectes  
2015

**CUISINE DOMESTIQUE**  
Cuisine unique

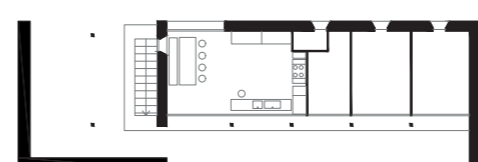


**Penty Breton**

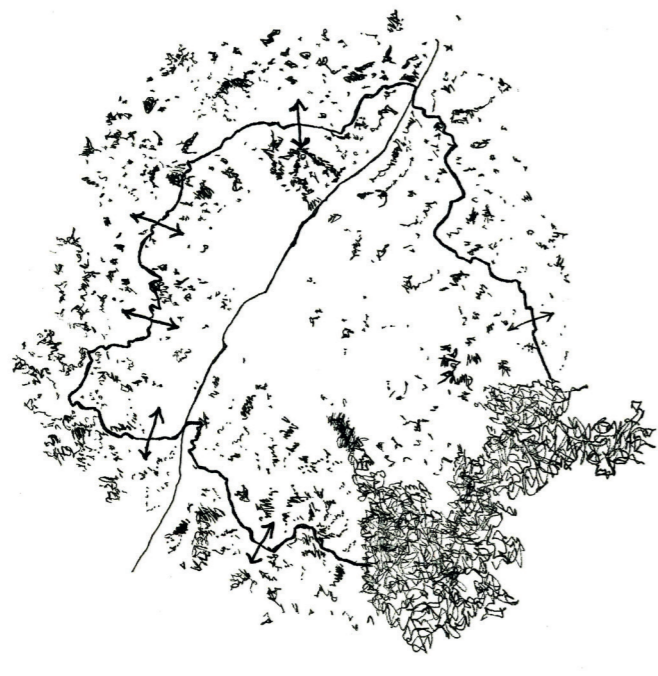


Plan de cuisson isolé  
Évier isolé  
Table familiale et canapé

Convivialité

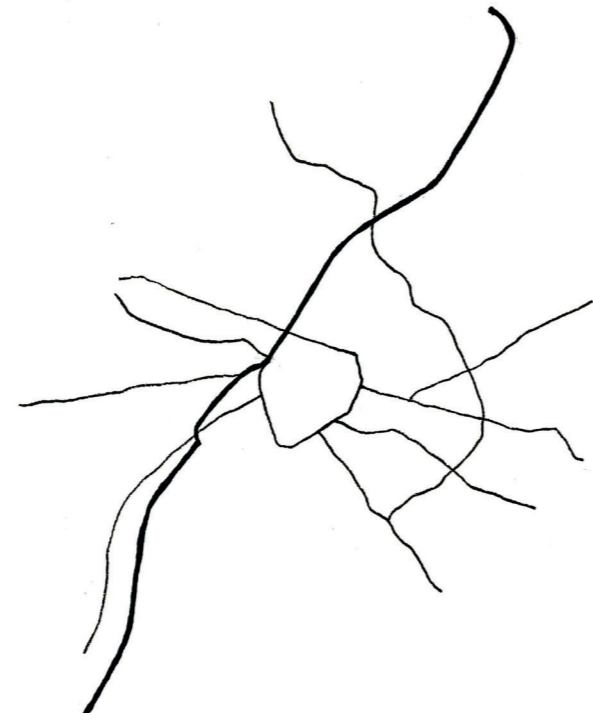


**Cuisine-pièce à vivre**  
Villa de vacances aux Mathes  
Le Corbusier  
1934



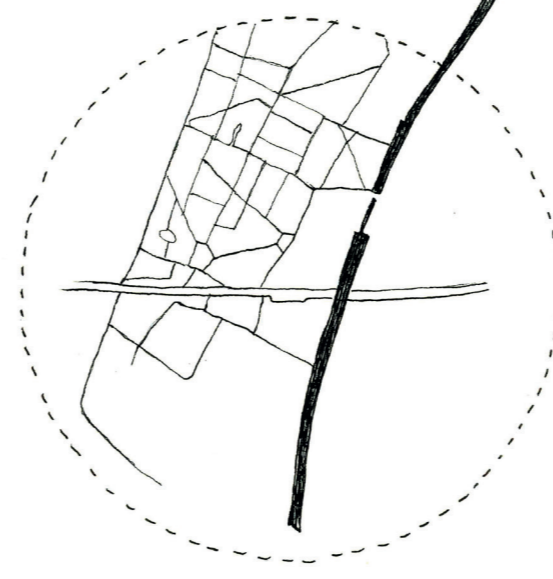
ECHELLE PÉRIURBAINE

*Cuisine au coeur des champs*



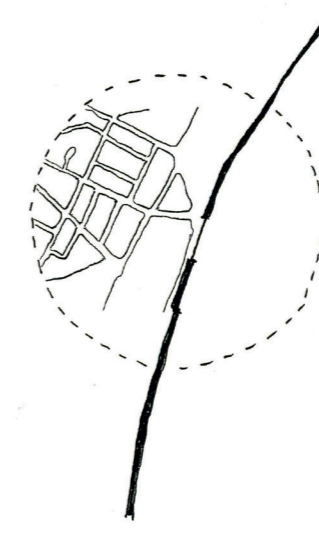
ECHELLE URBAINE

*Cuisine nomade*



ECHELLE DE LA CITÉ

*Cuisine expérimentale*



ECHELLE DU QUARTIER

*Cuisine & communauté*



ECHELLE DE L'ÎLOT

*Cuisine en coeur d'îlot*



⊥⊥ Densément urbanisé

⊘ Sous influence rurale

■ Sous influence forestière

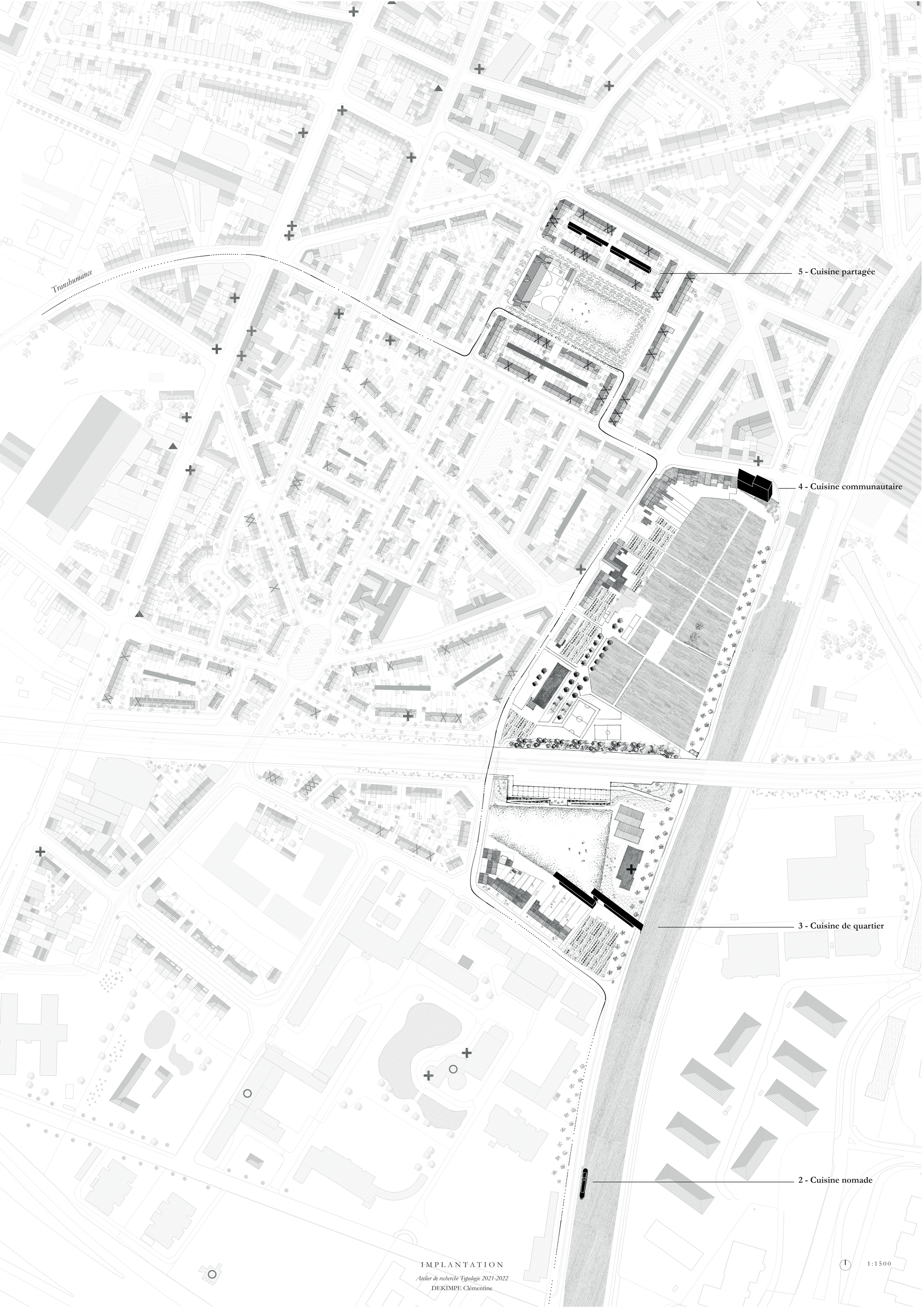
▨ Reliques de vallées

■ Espaces verts publics

..... Territoire du canal

RÉSEAU DES CUISINES BRUXELLOISES

Atelier de recherche Typologie 2021-2022  
DEKIMPE Clémentine



Transhumance

5 - Cuisine partagée

4 - Cuisine communautaire

3 - Cuisine de quartier

2 - Cuisine nomade

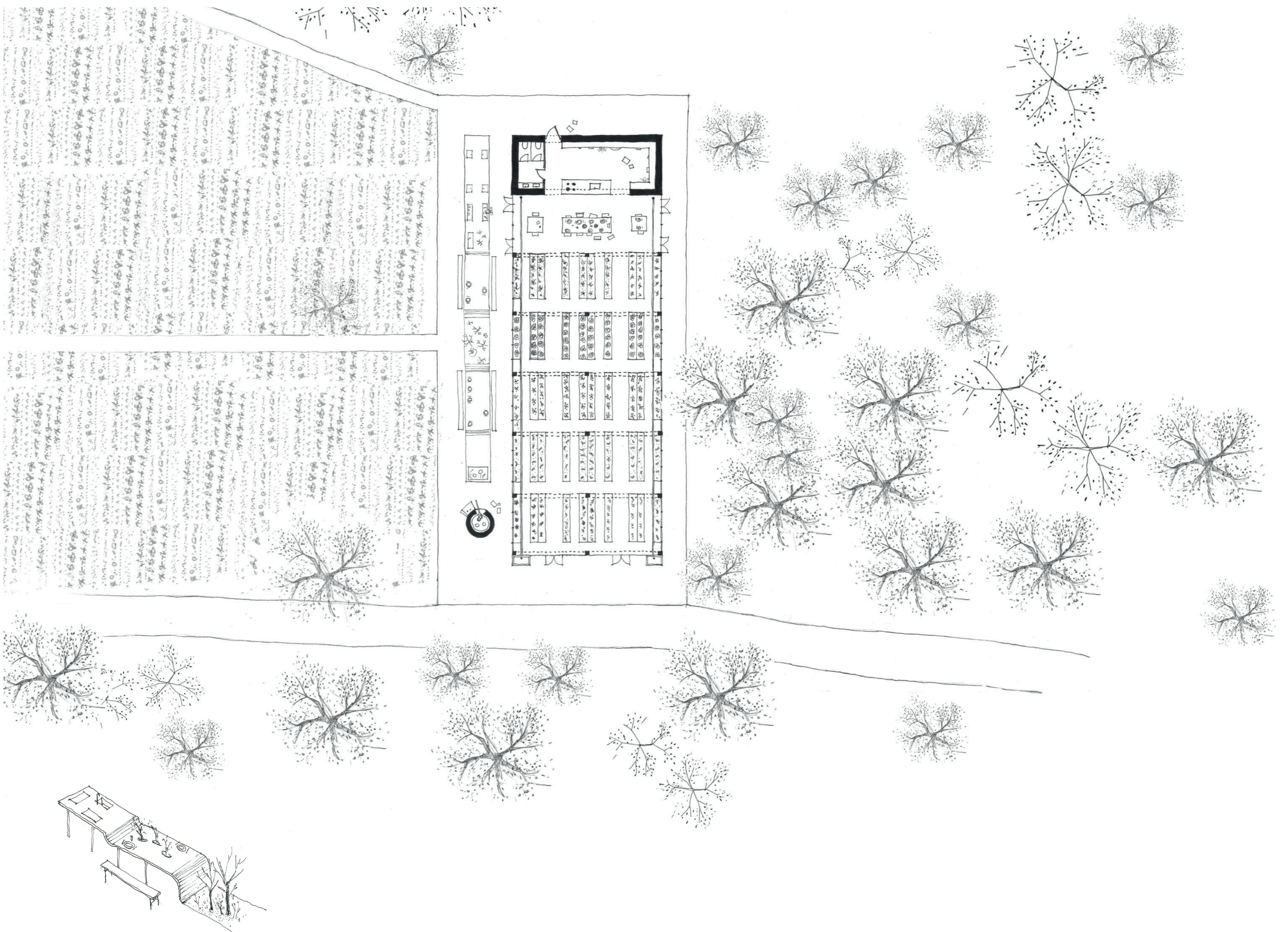
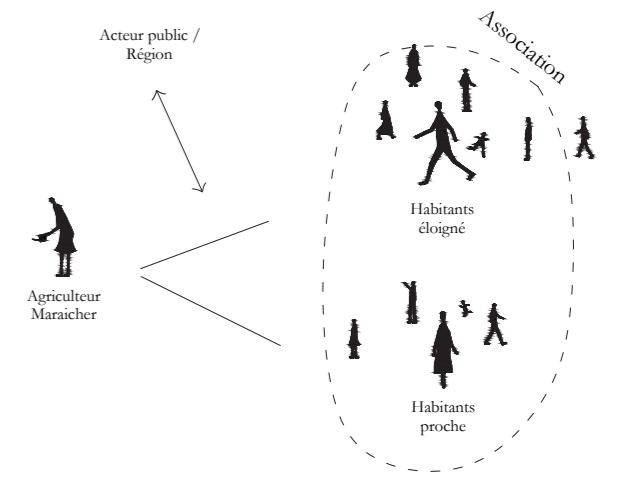
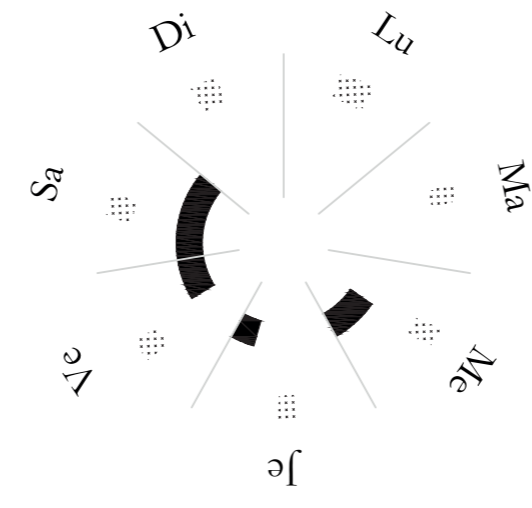
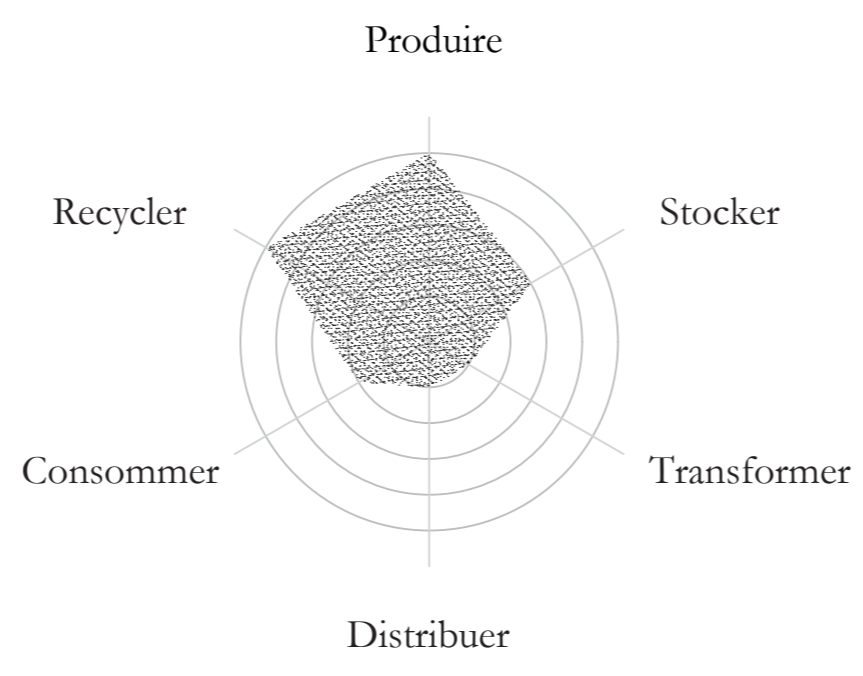
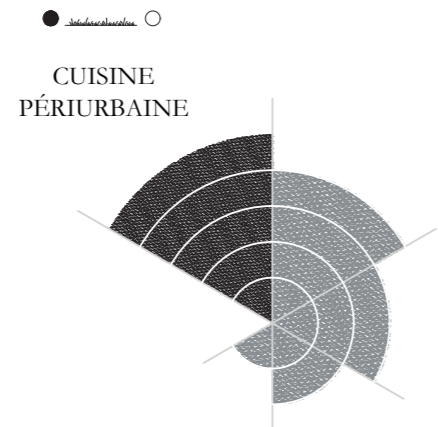


Situation existante

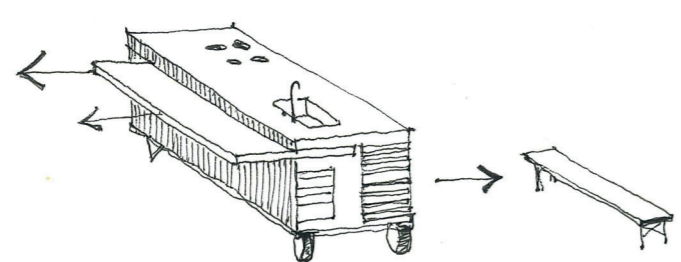
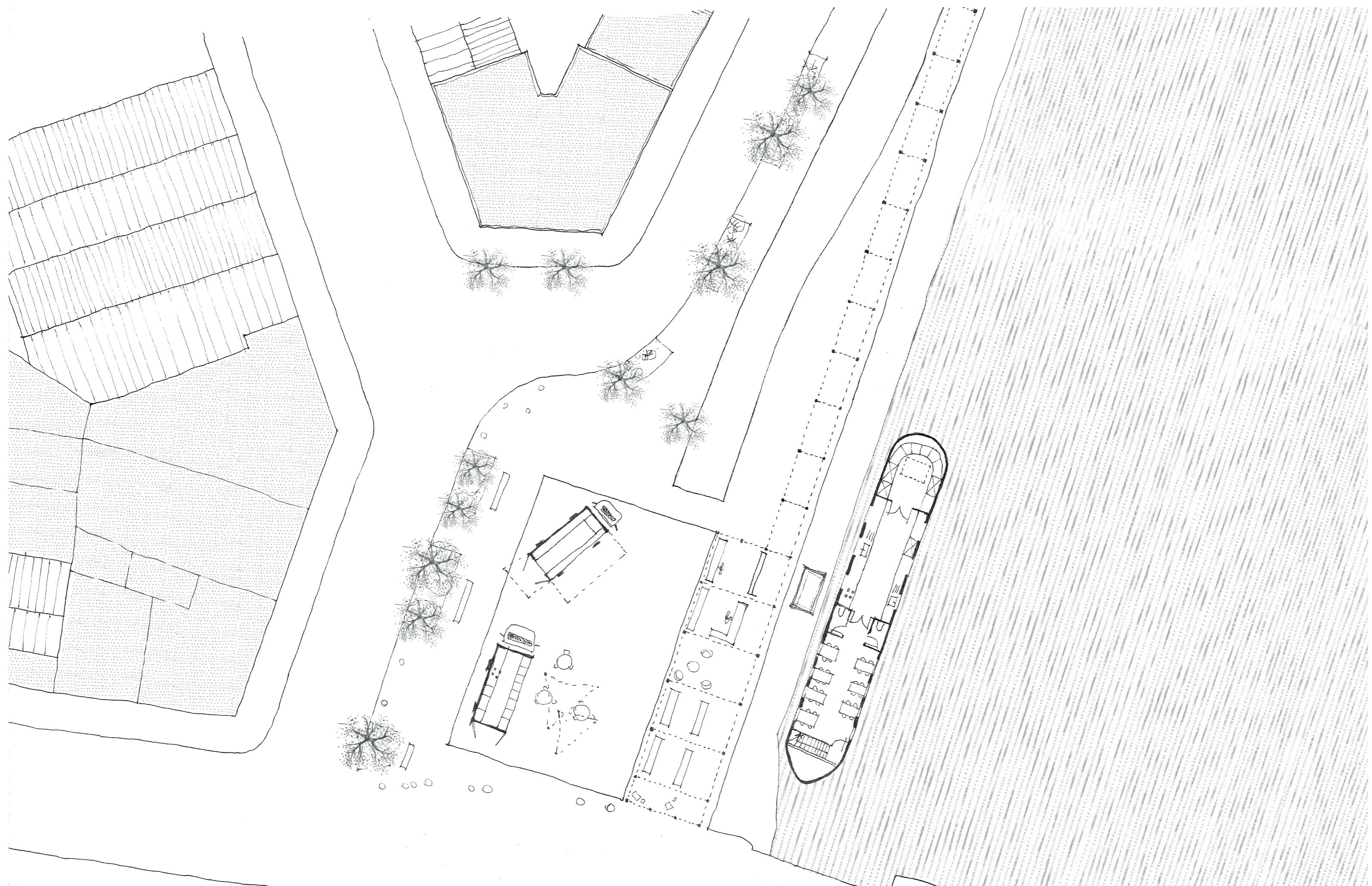
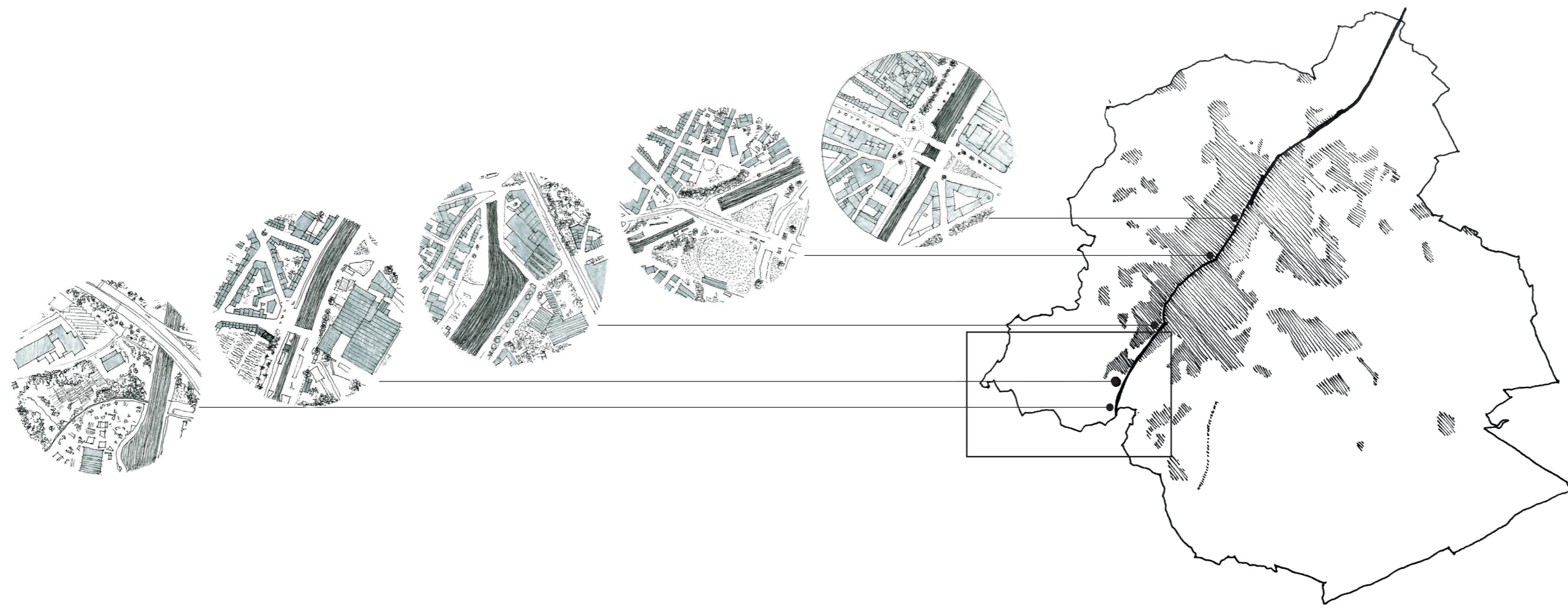
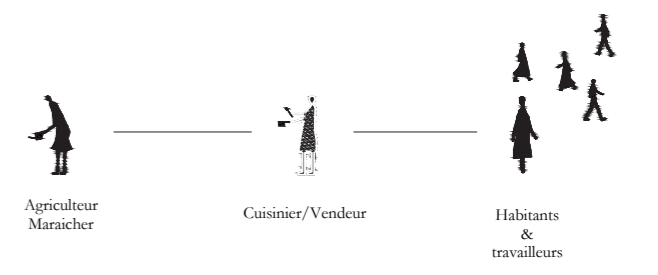
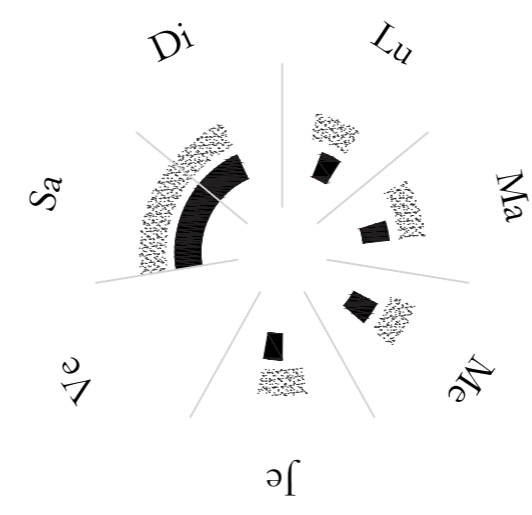
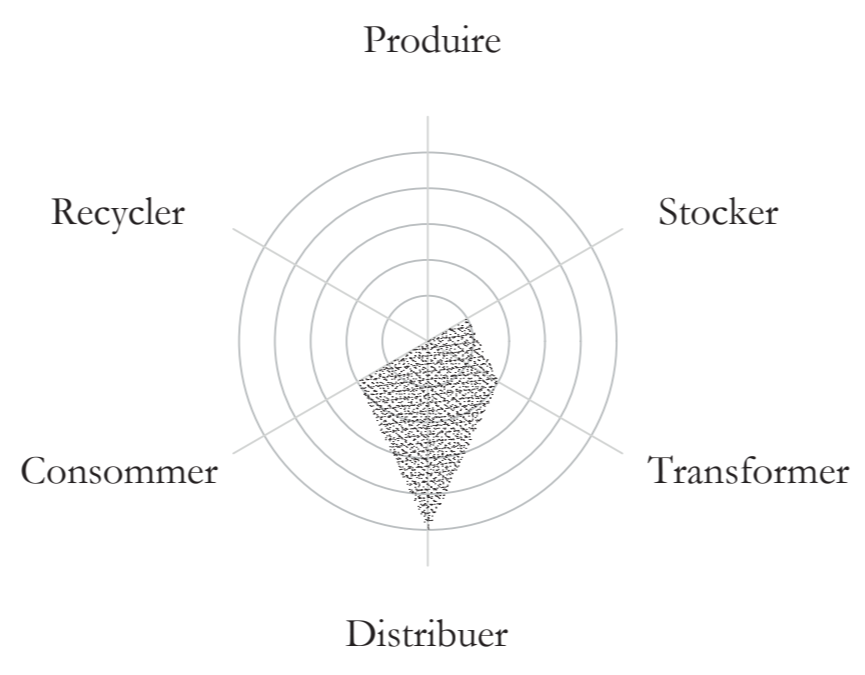
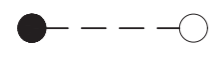


# LA CUISINE PÉRIURBAINE

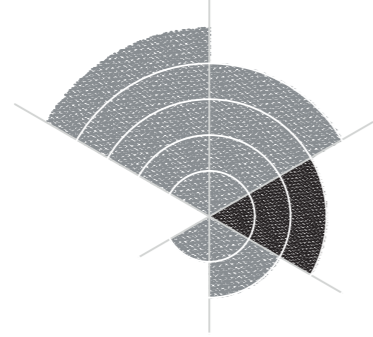
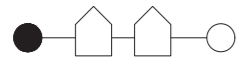
● Habitant proche ○ Acteur public / Région



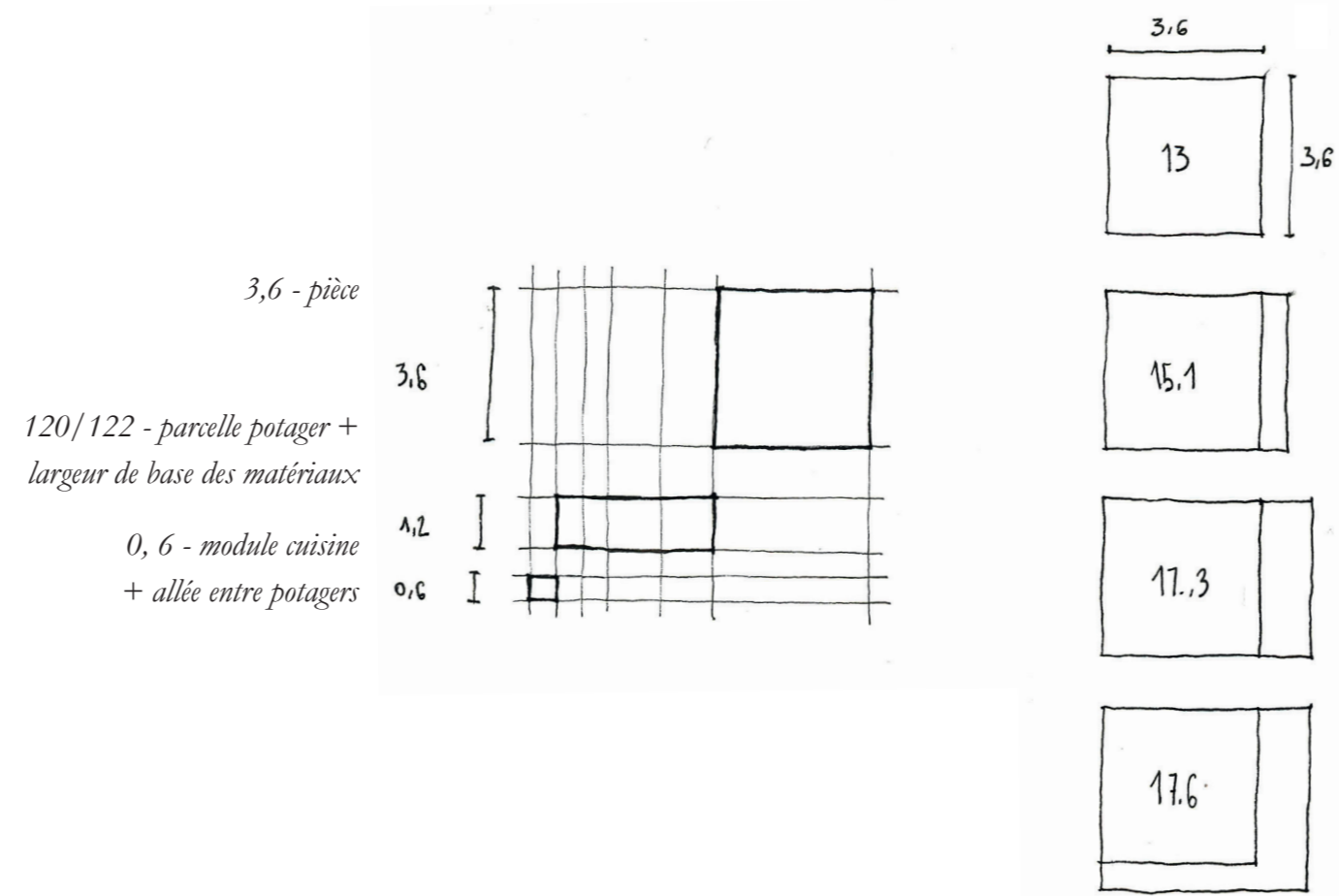
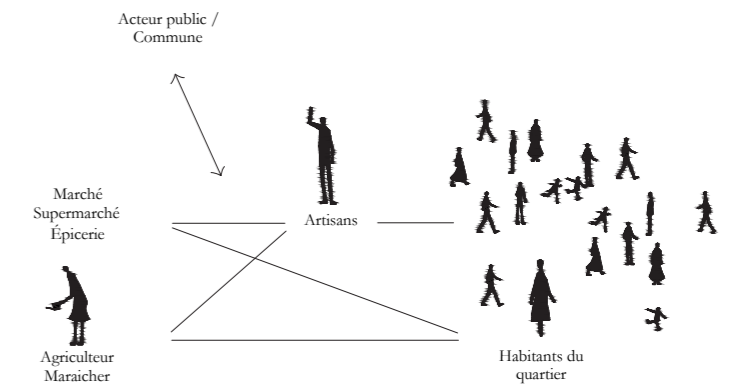
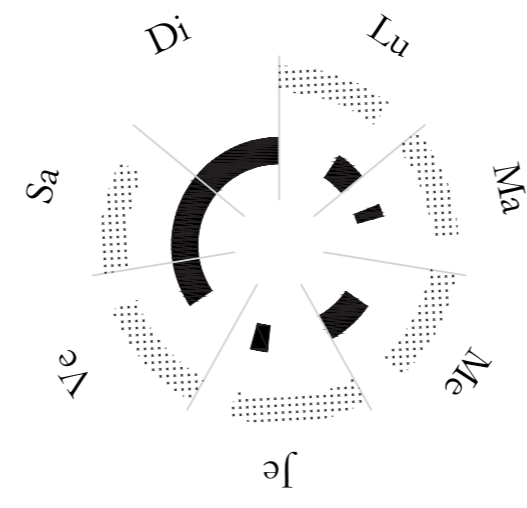
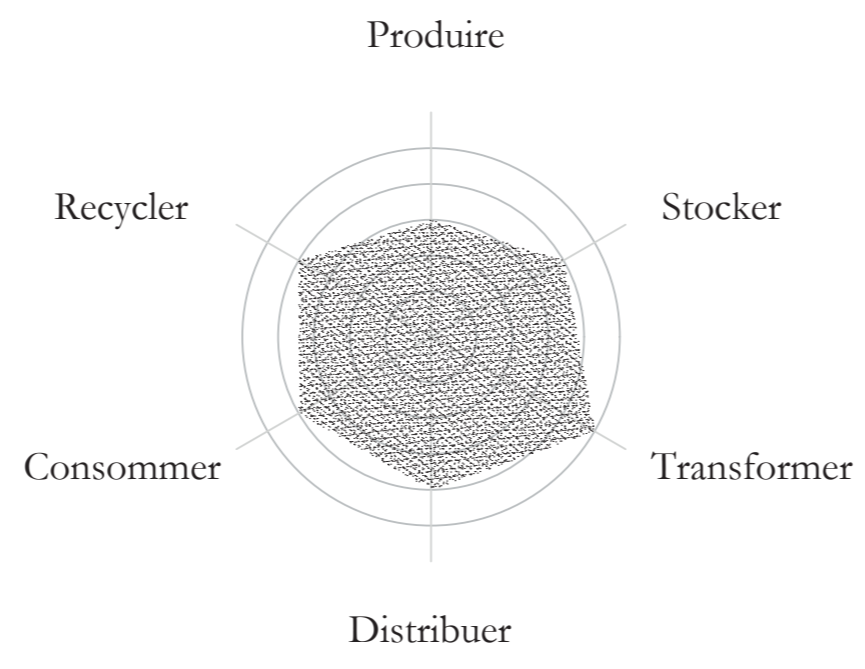
# LA CUISINE NOMADE



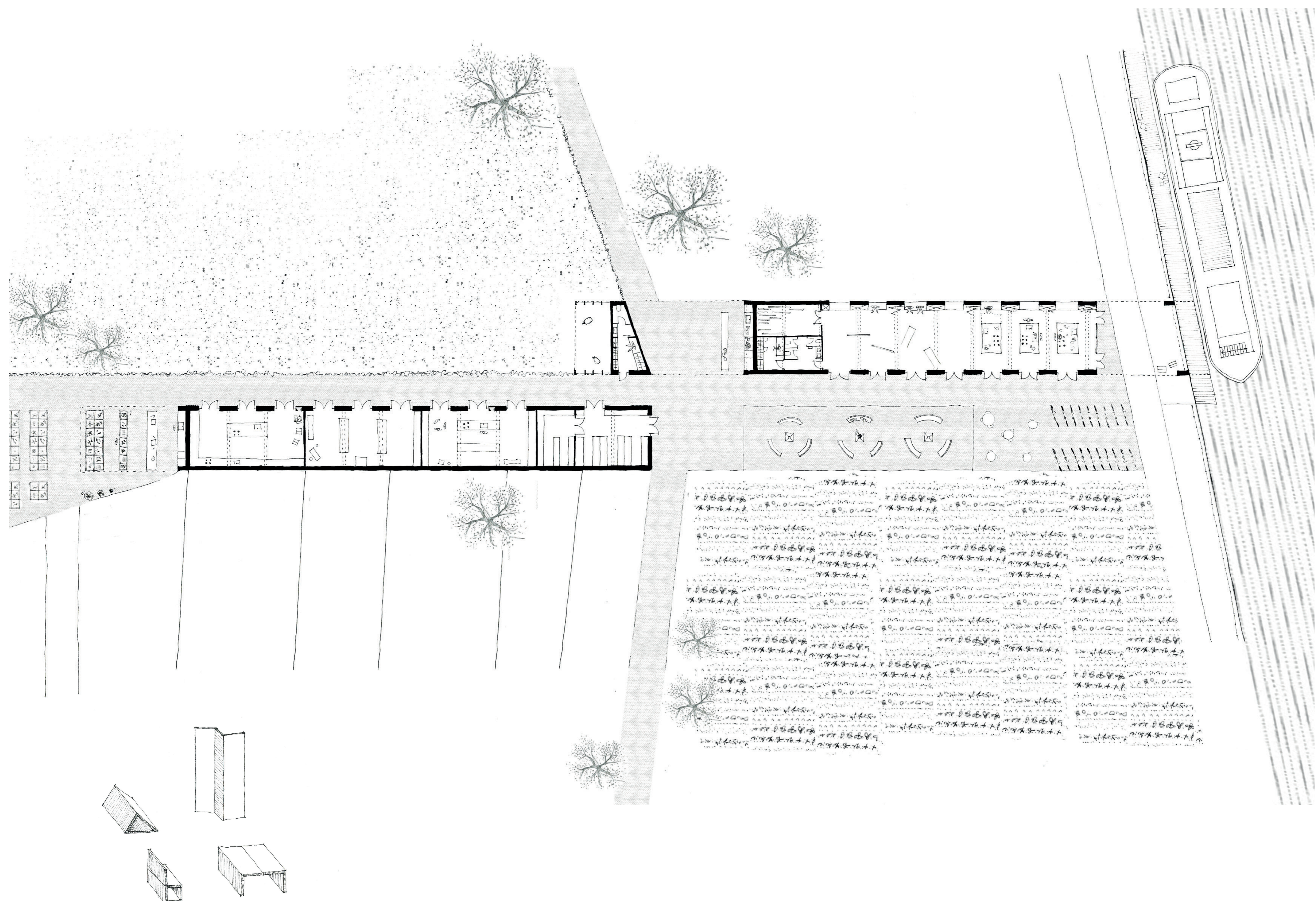
# LA CUISINE DE QUARTIER



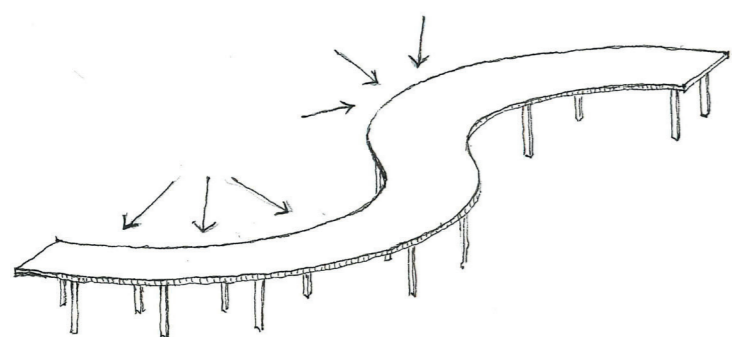
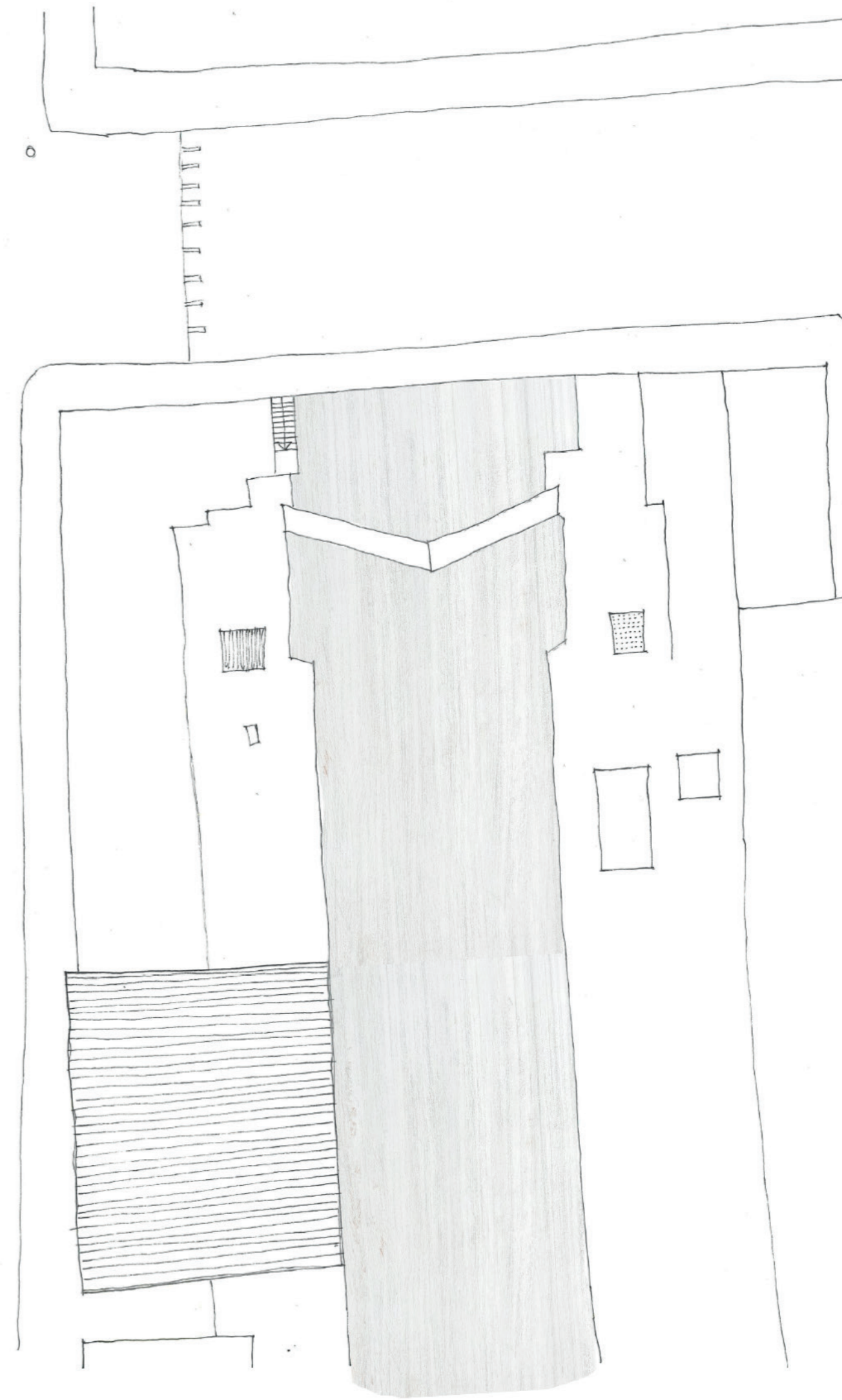
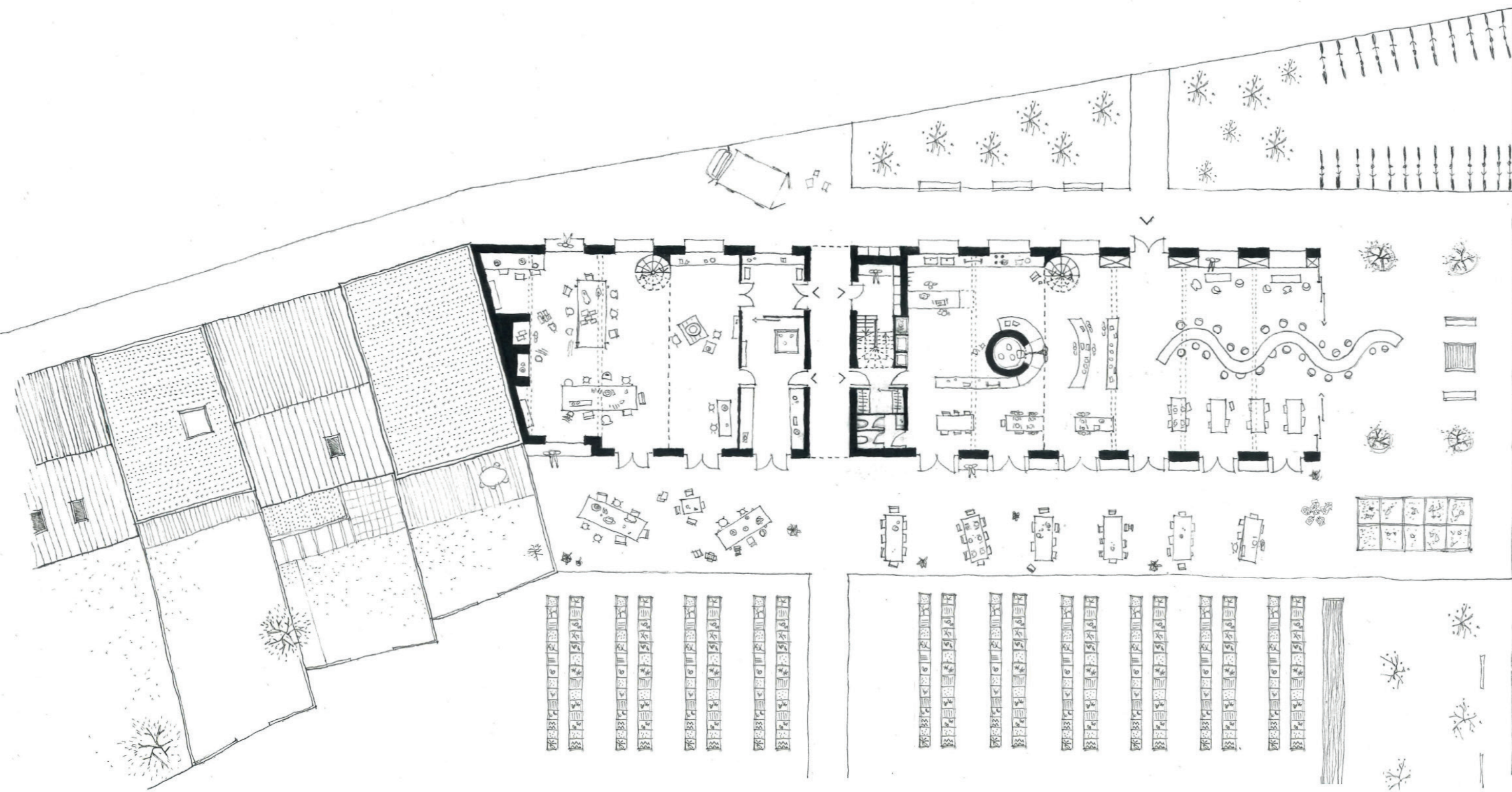
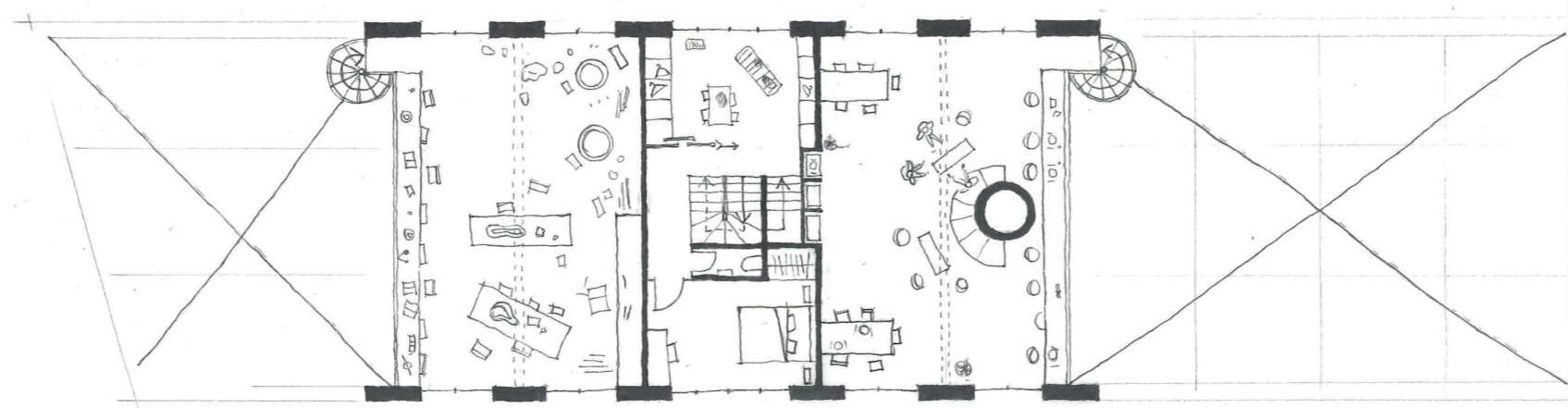
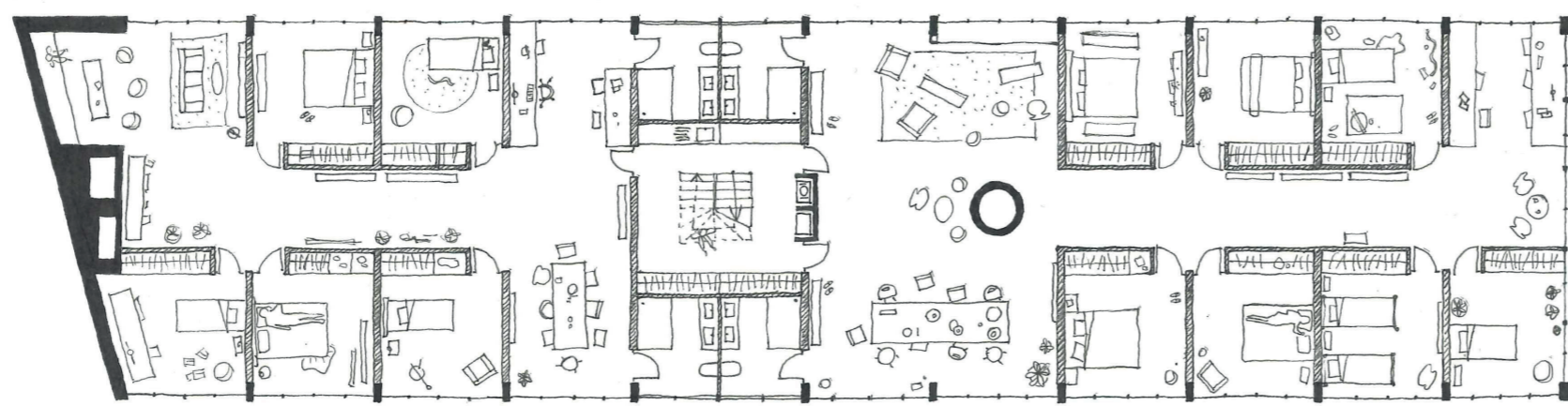
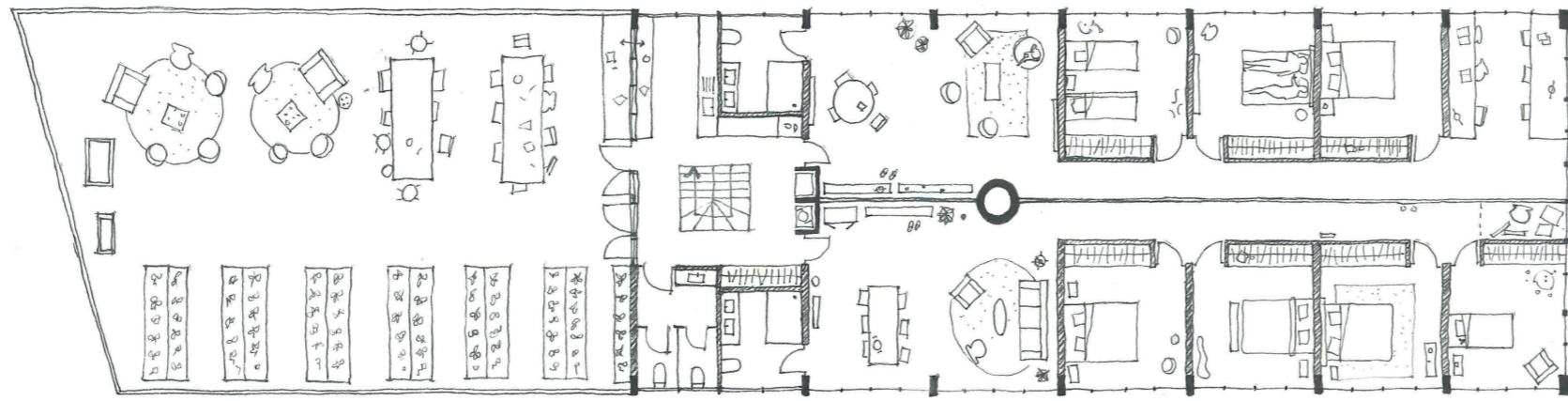
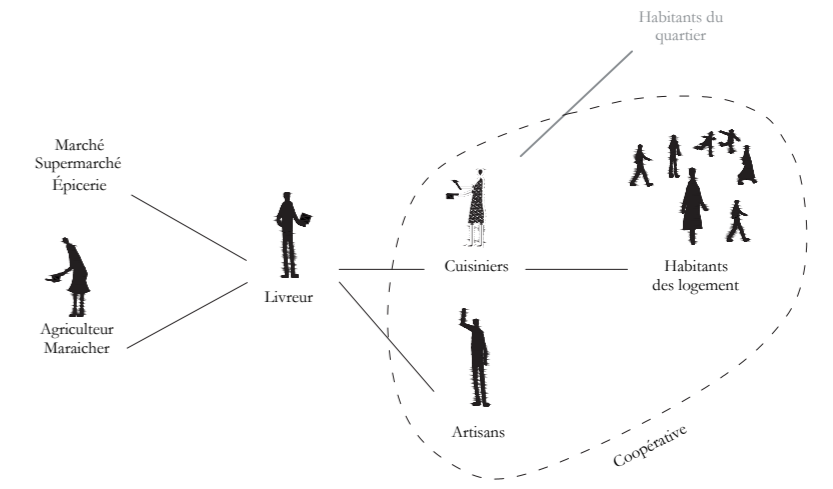
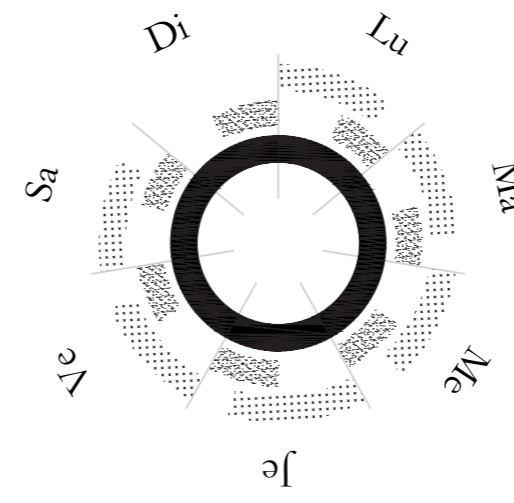
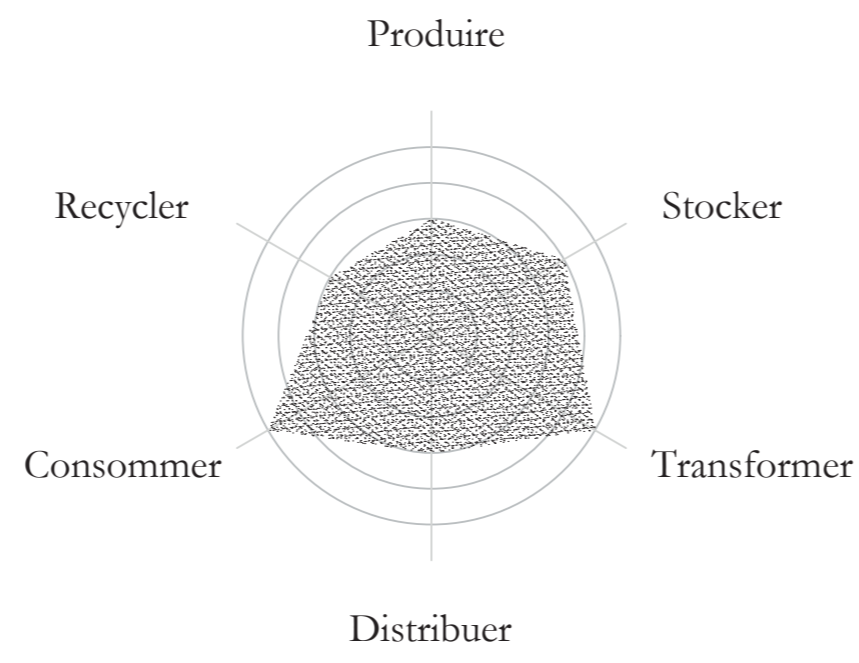
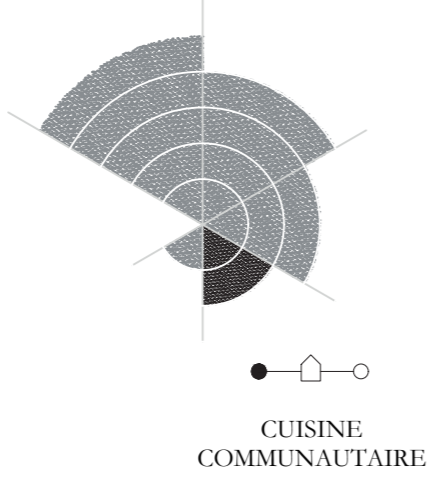
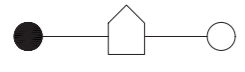
● ○ ○ ○  
CUISINE DE QUARTIER



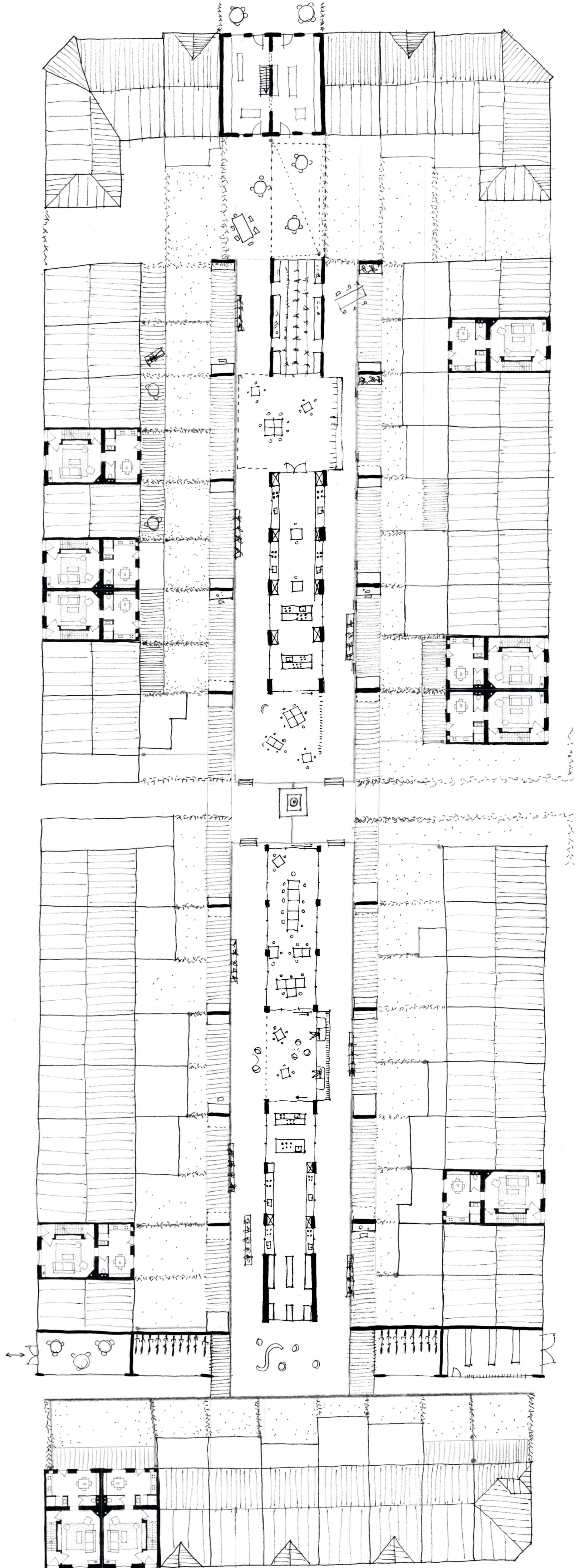
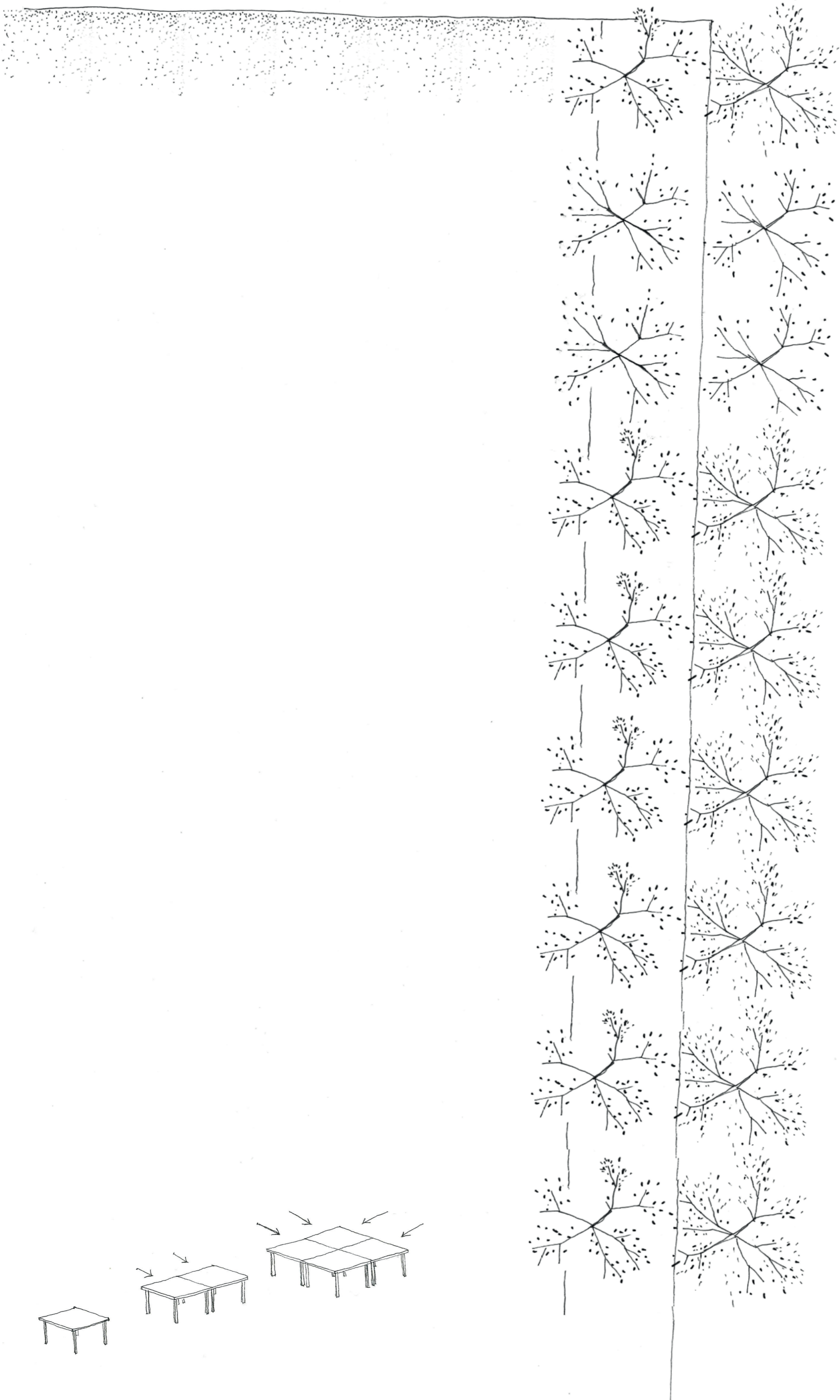
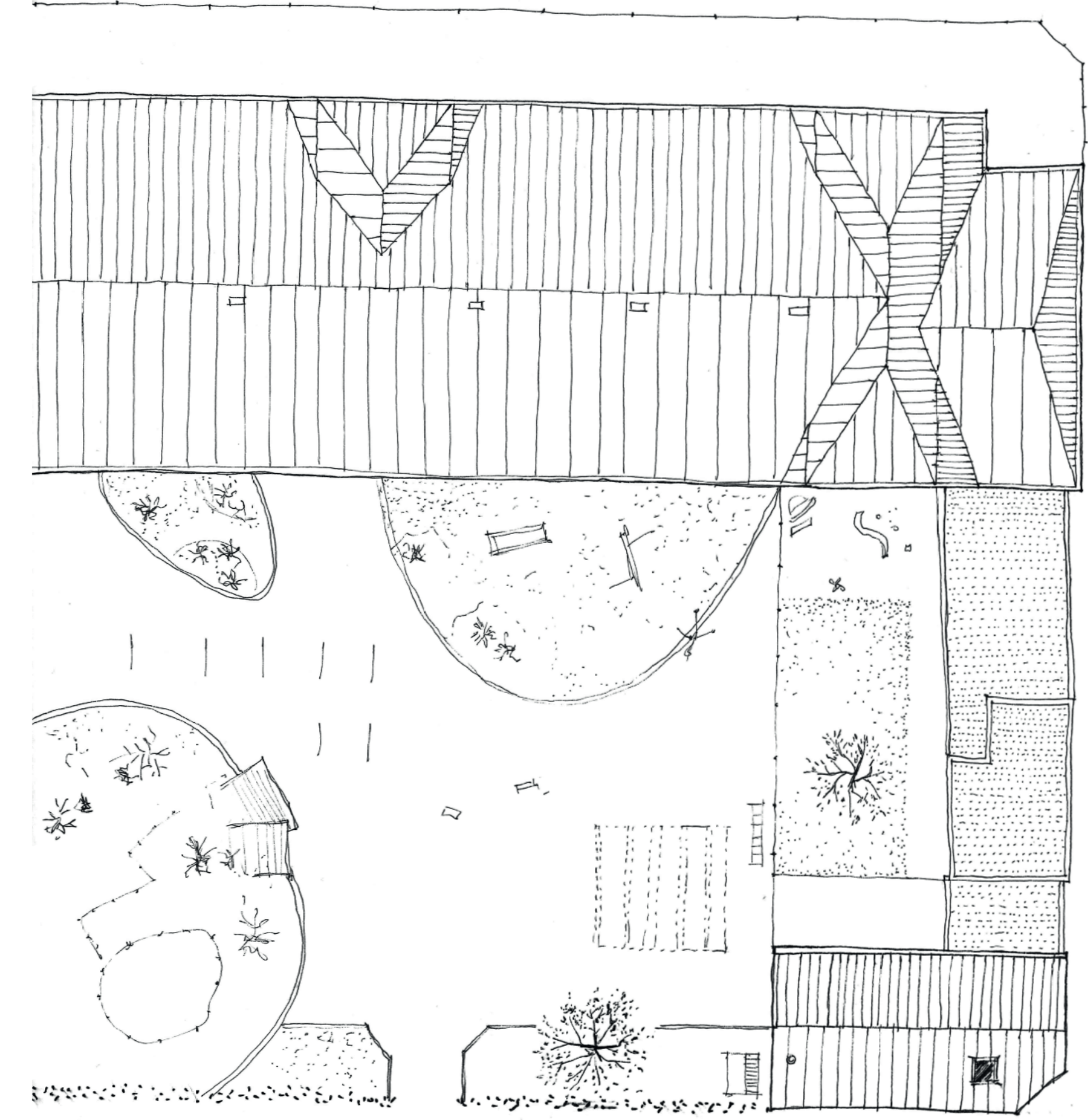
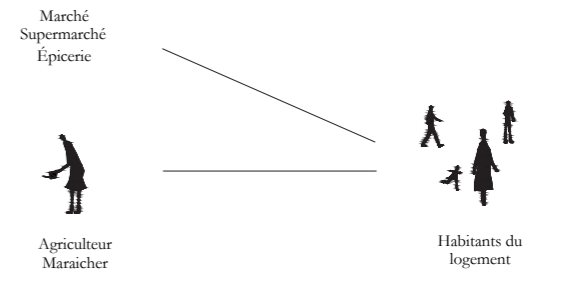
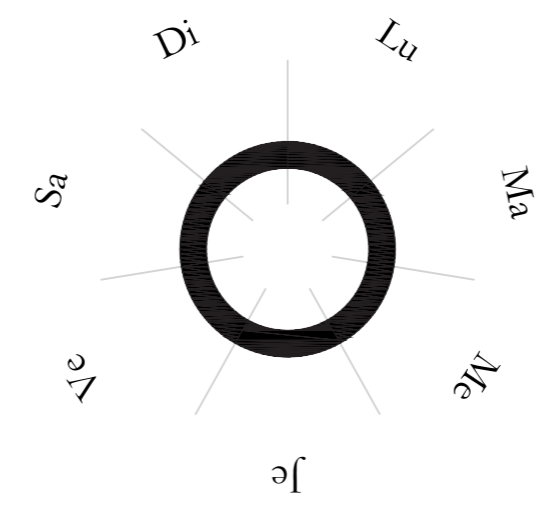
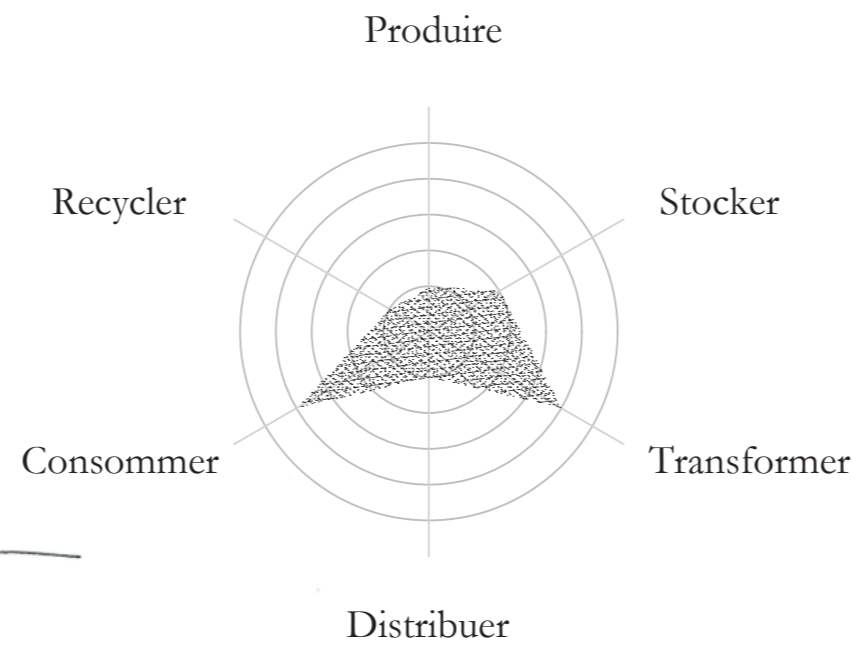
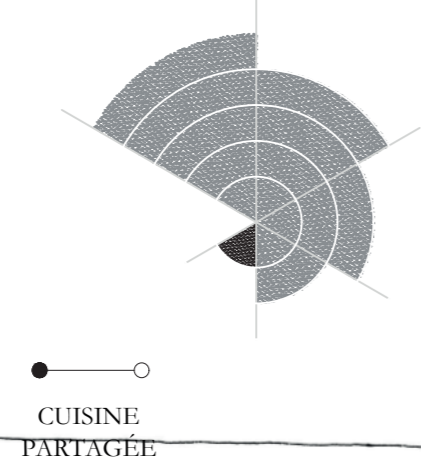
Trame du projet

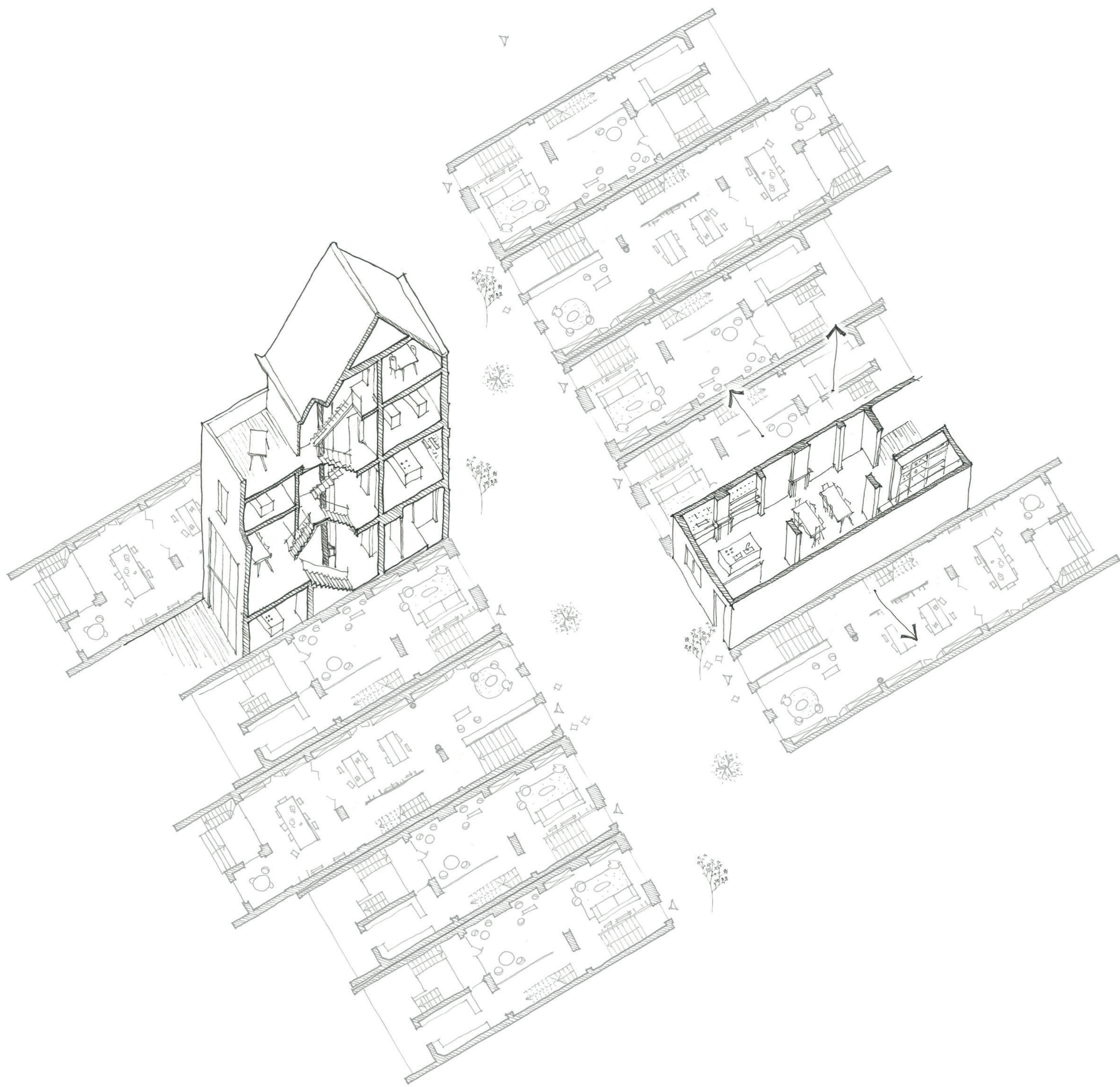


# LA CUISINE COMMUNAUTAIRE



# LA CUISINE PARTAGÉE

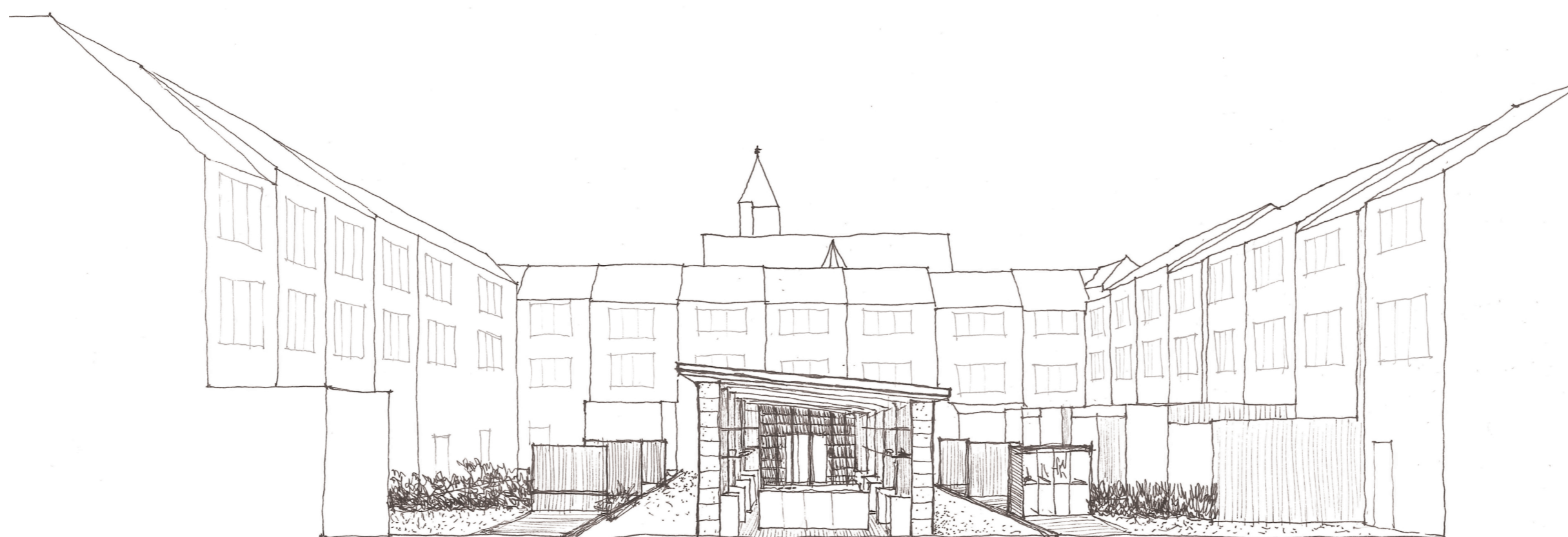
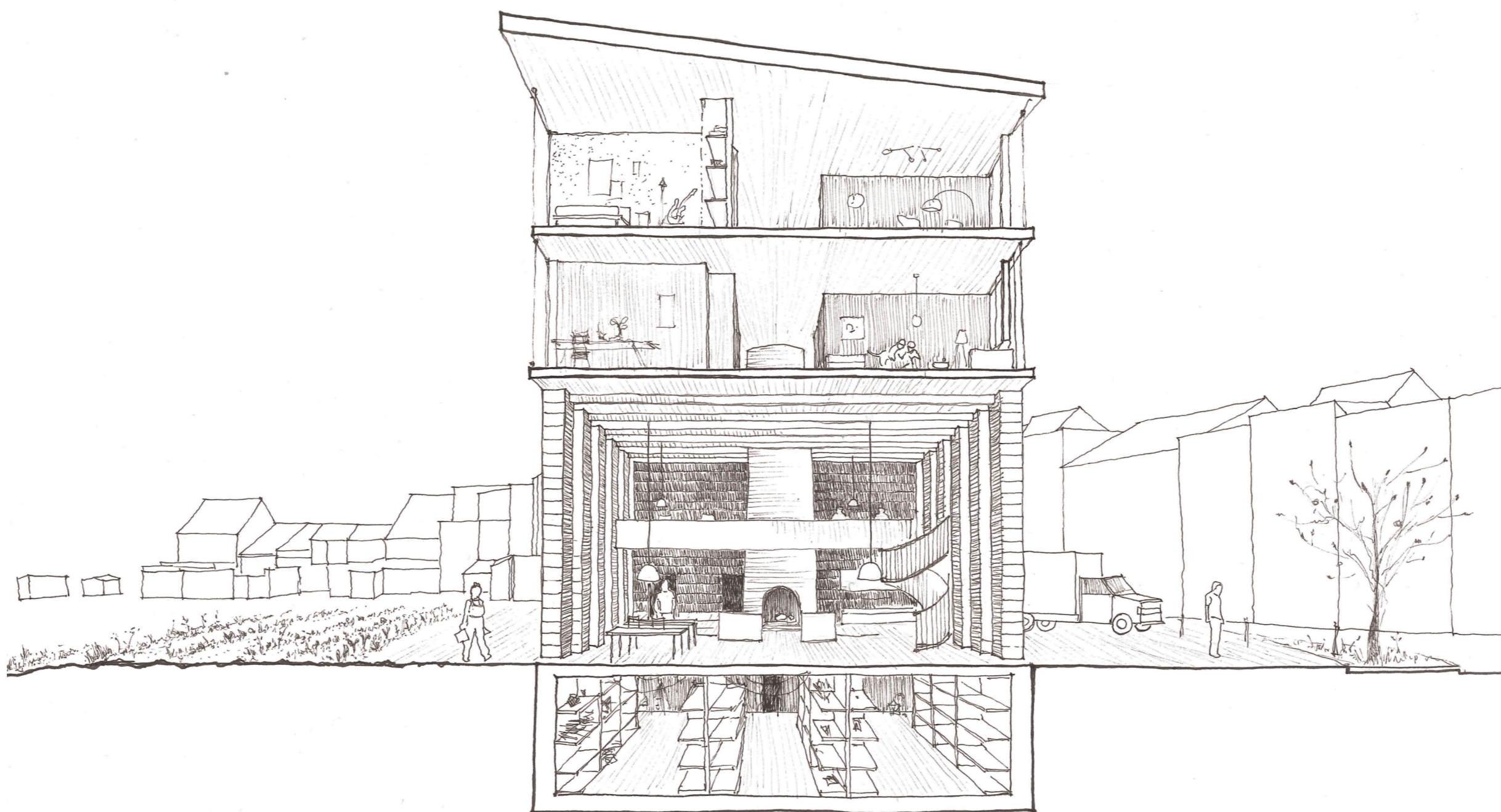
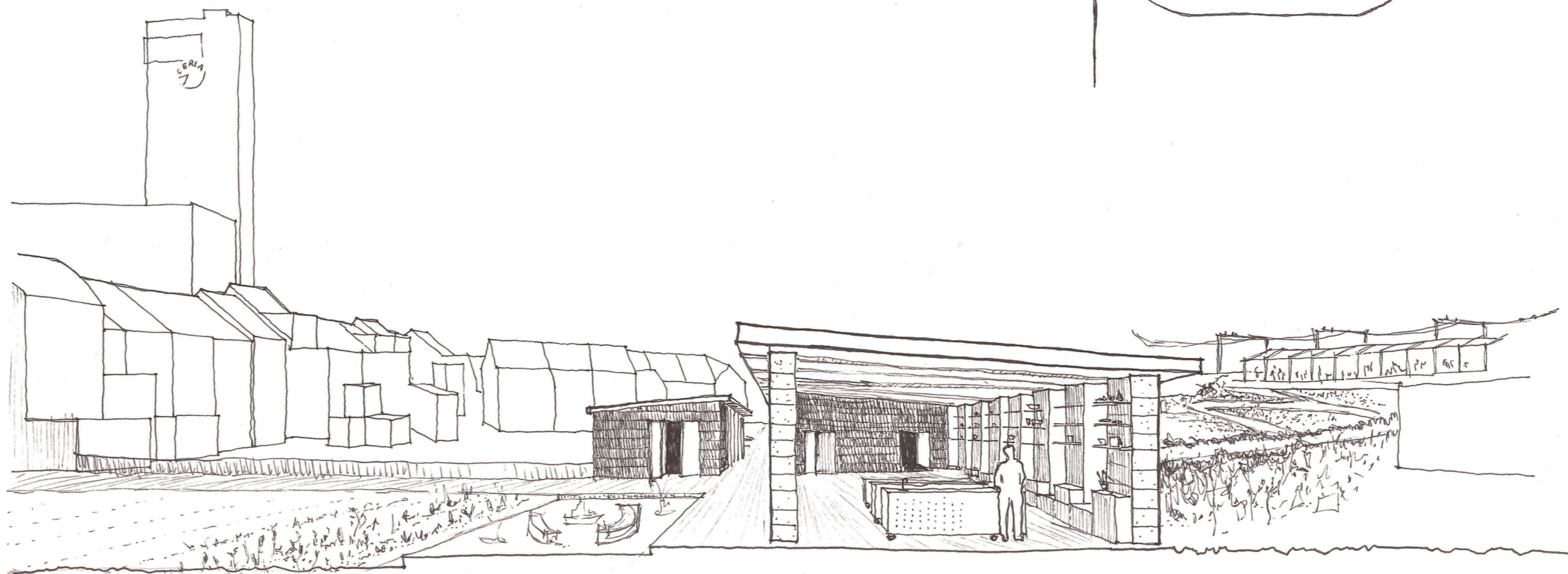
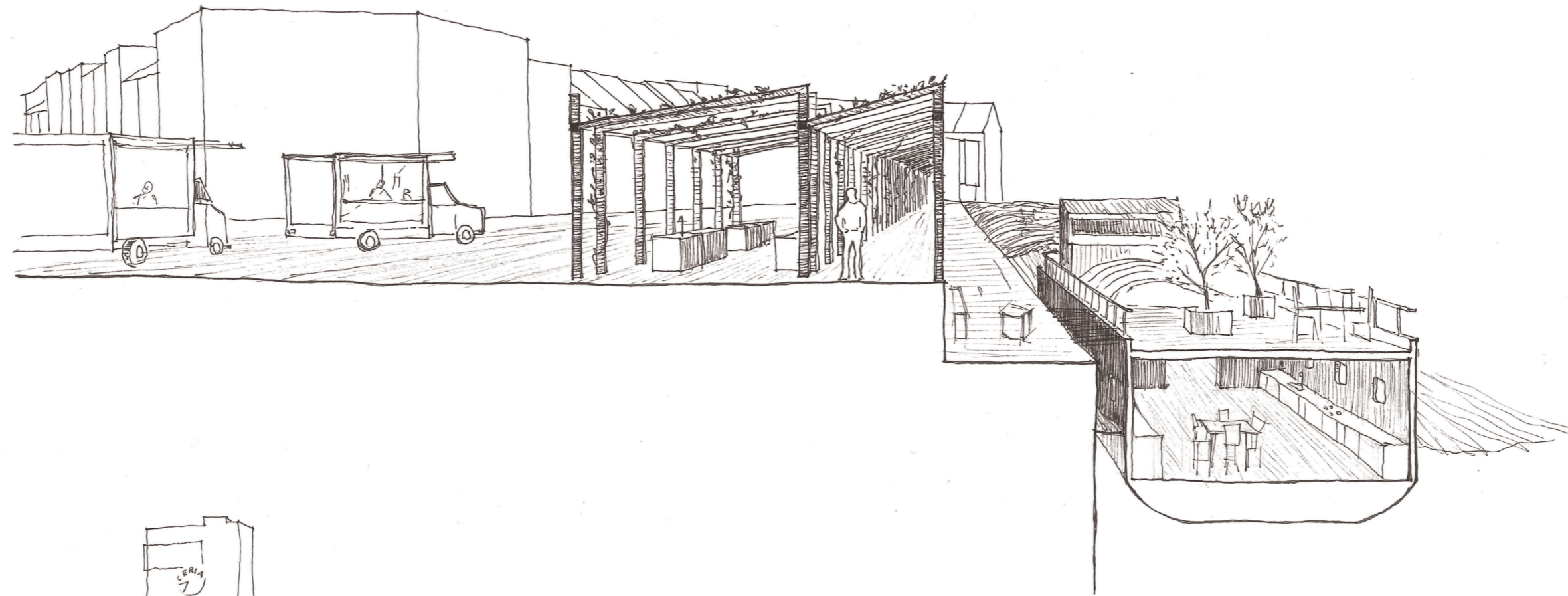
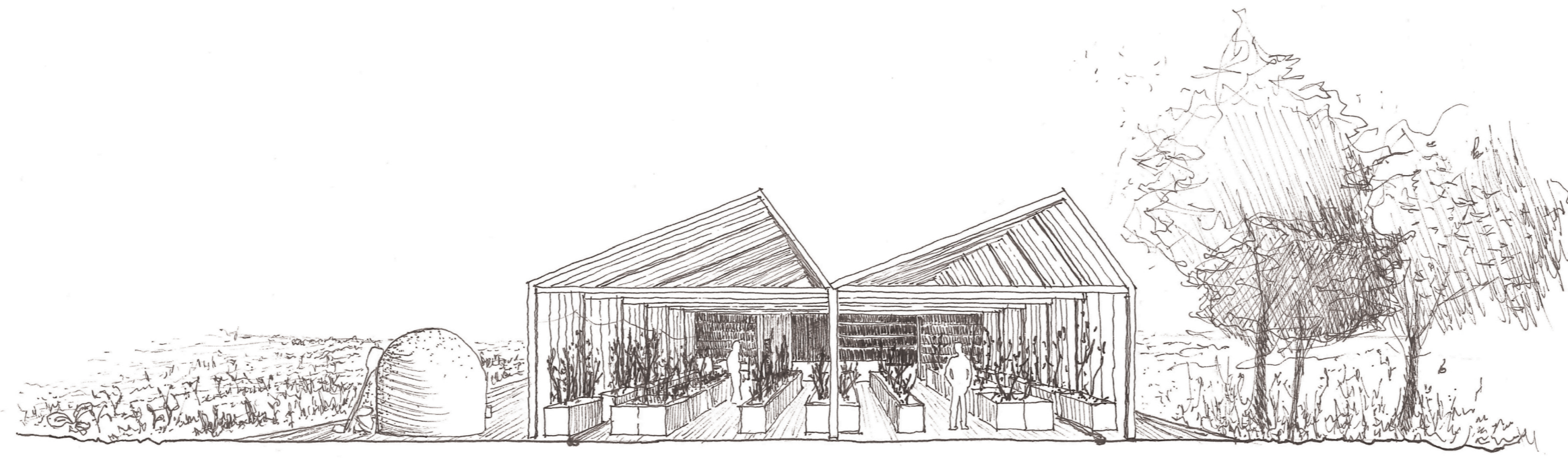


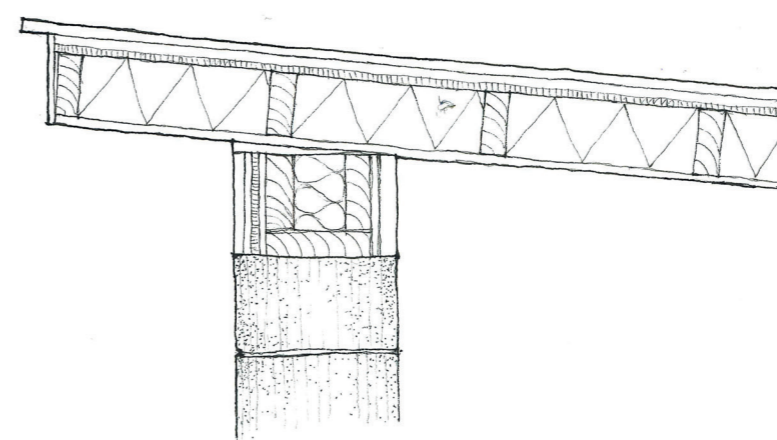
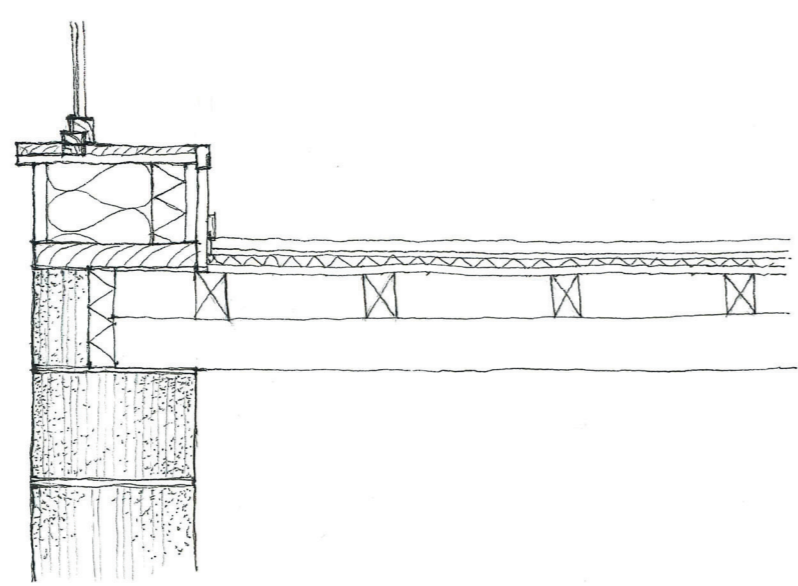


Maison sans cuisine

Cuisine communautaire / Cuisine de quartier  
5 à 20 maisons

Cuisine partagée  
1 à 3 maisons





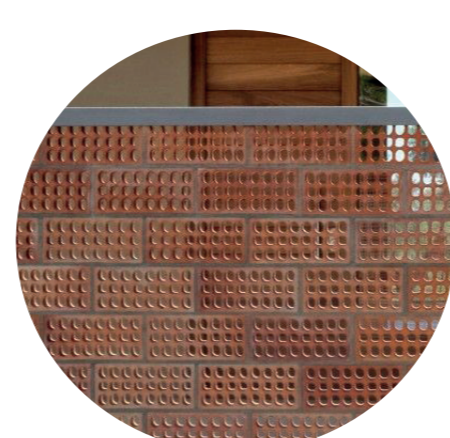
Structure principale



Combinaison avec structure bois



Combinaison avec structure bois

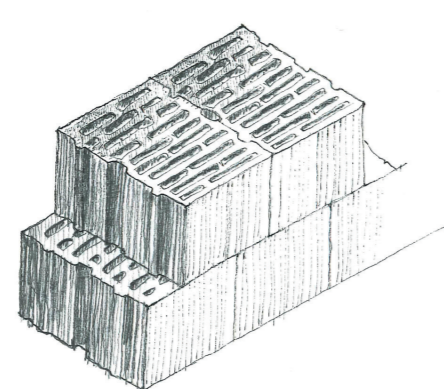


Moucharabieh - garde-corps

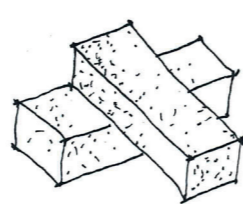


Remplissage - Éléments de cuisine, bancs...

Cuisine



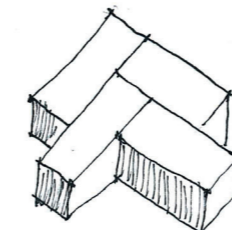
Brique alvéolaire  
- structure monomur -



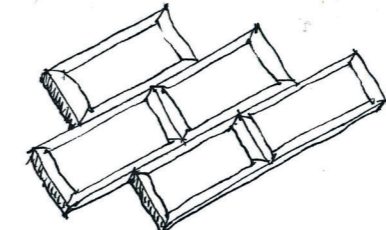
Brique réfractaire  
- four -



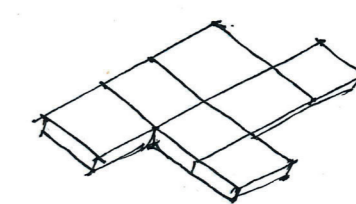
Tuiles  
- couverture -



Brique sur chant  
- sol -



Brique émaillée  
- parement -

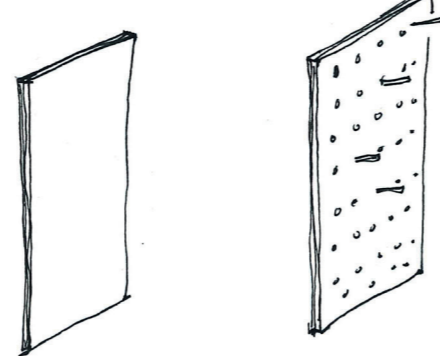


Tomettes  
- terrasse -

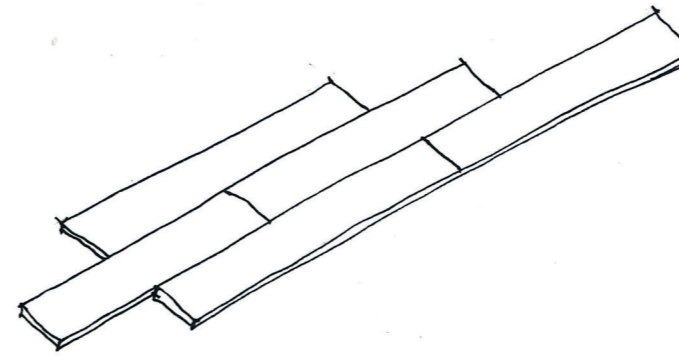
Logement



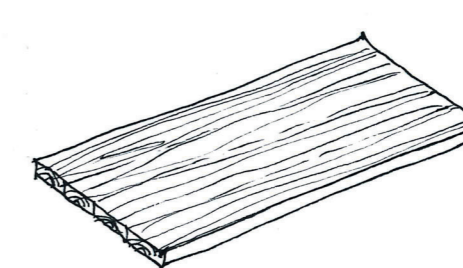
Bois massif  
- structure poteau-poutre -



Multiplex  
- parois amovibles -



Plancher  
- sol -



Bois massif  
- tables -